



# LG Optimus Exceed 2 Home Button Replacement

The removal of the LG Optimus Exceed 2 Home button.

Written By: Carl Dorvilus



## INTRODUCTION

If your home button is not working or you have to press it several times in order to get it to work, then you might want to replace that part of your device. In order to replace the home button of your LG Optimus Exceed 2 phone please follow these steps below.



### TOOLS:

- [Metal Spudger](#) (1)
  - [Tweezers](#) (1)
  - [iFixit Opening Tools](#) (1)
  - [Phillips #000 Screwdriver](#) (1)
-

## Step 1 — Battery



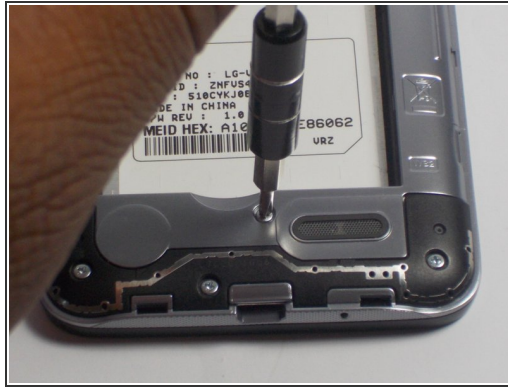
- Flip the device over and remove the back covering.

## Step 2



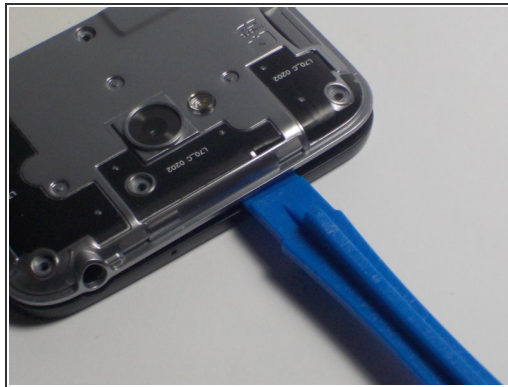
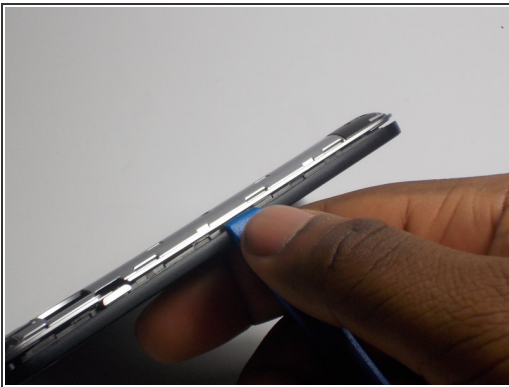
- Push on the top of the battery downward and pull the battery off of the device.

## Step 3 — Rear Camera



- Remove the eleven 4mm screws using a Philips head screw driver.

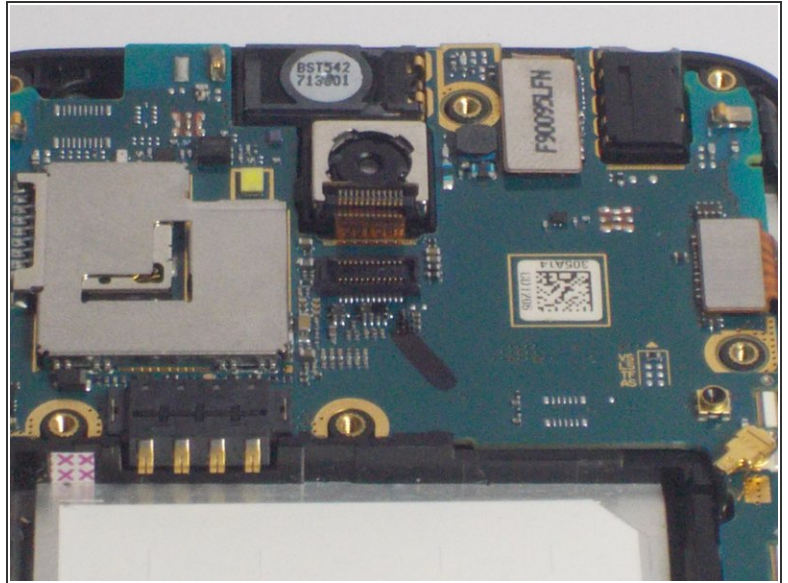
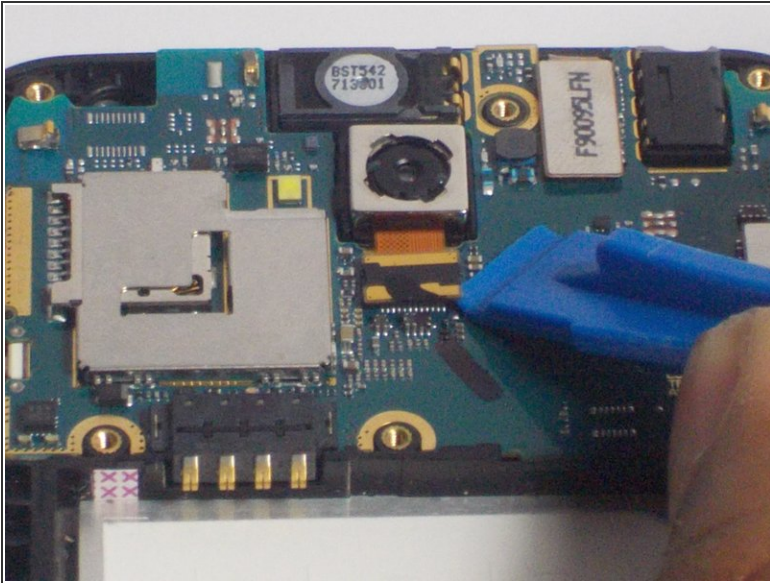
## Step 4



- Insert the plastic opening tool into the side of the device and pry off silver covering. Push up against the back covering when the tool is inserted to detach from the phone.
- ⓘ Make sure to detach all sides of silver covering before lifting it off the phone.

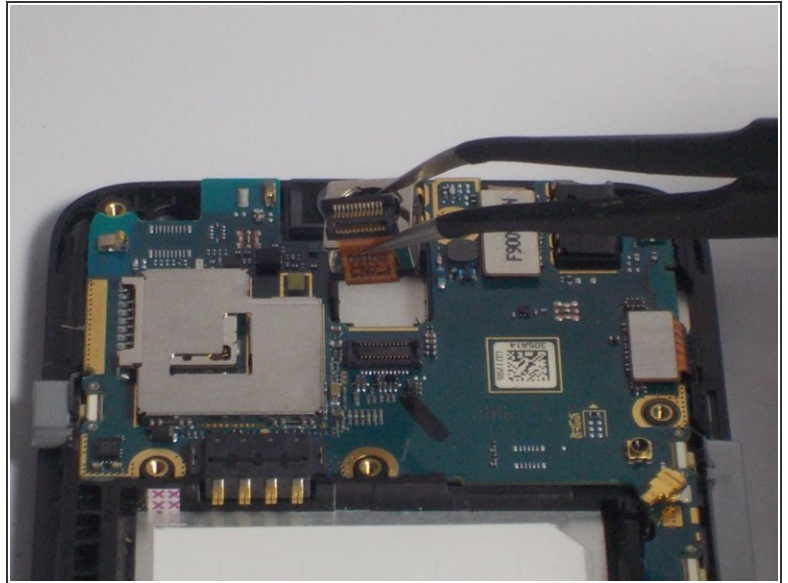
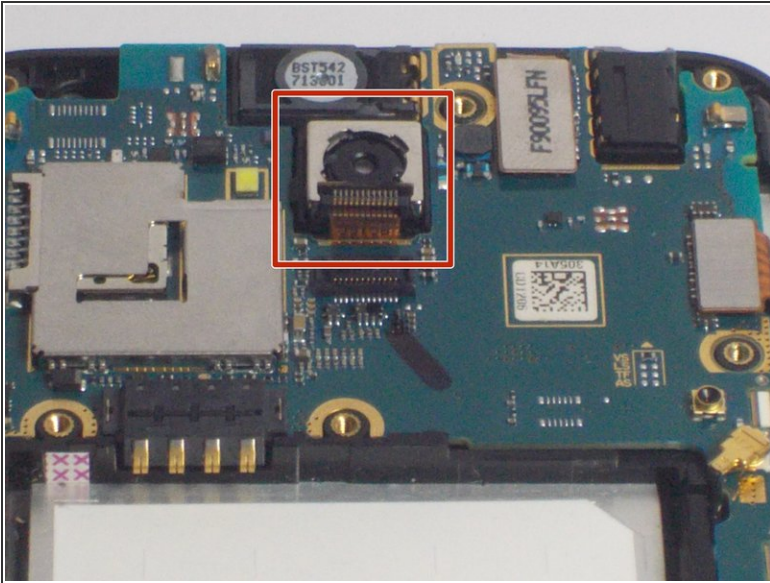


## Step 5



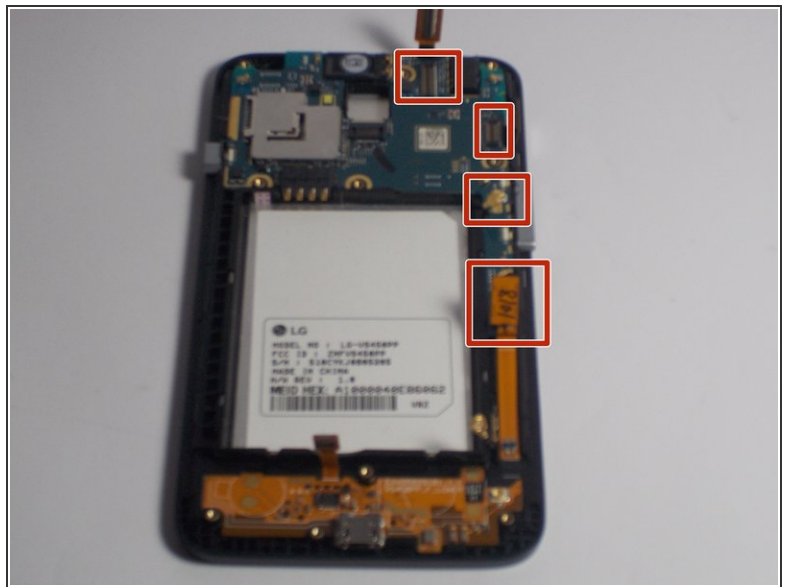
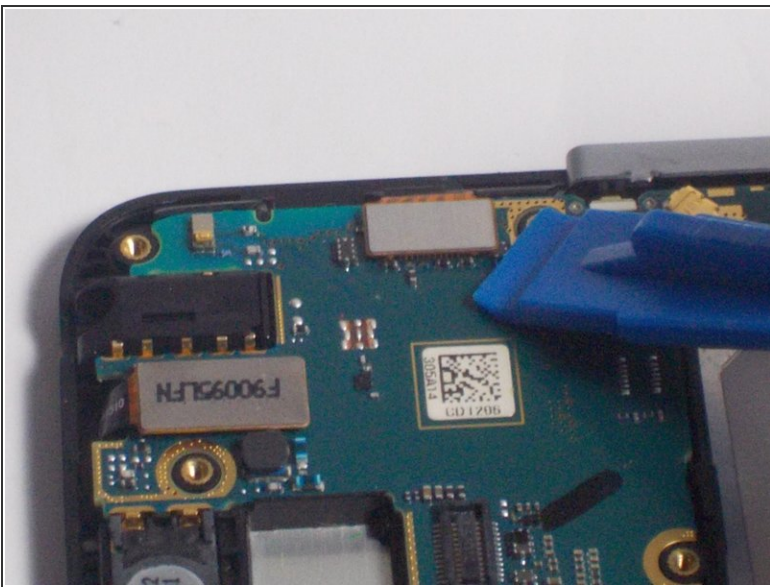
- Using the prying tool detach the connector on the device.
- Insert the plastic opening tool underneath the connector and push tool down to lift the connector from the device.

## Step 6



- Using tweezers lift the camera off of the device.
- To do so grasp the camera gently with the tweezers and pull the camera up out of the device.

## Step 7 — Motherboard



- Disconnect the remaining ribbon plugs and connectors. (Only remove the highlighted cables for the removal of the logic board.)

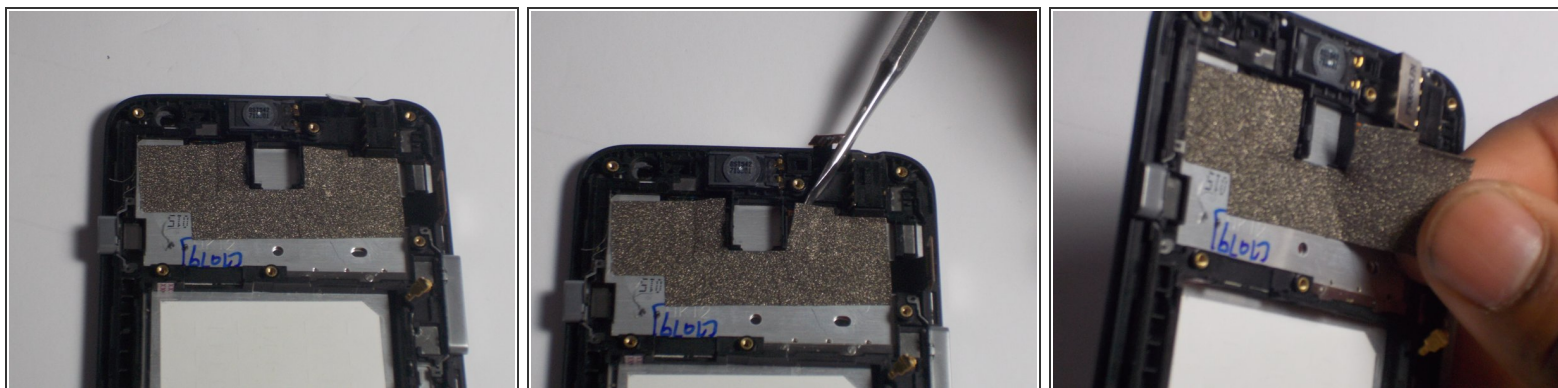


## Step 8



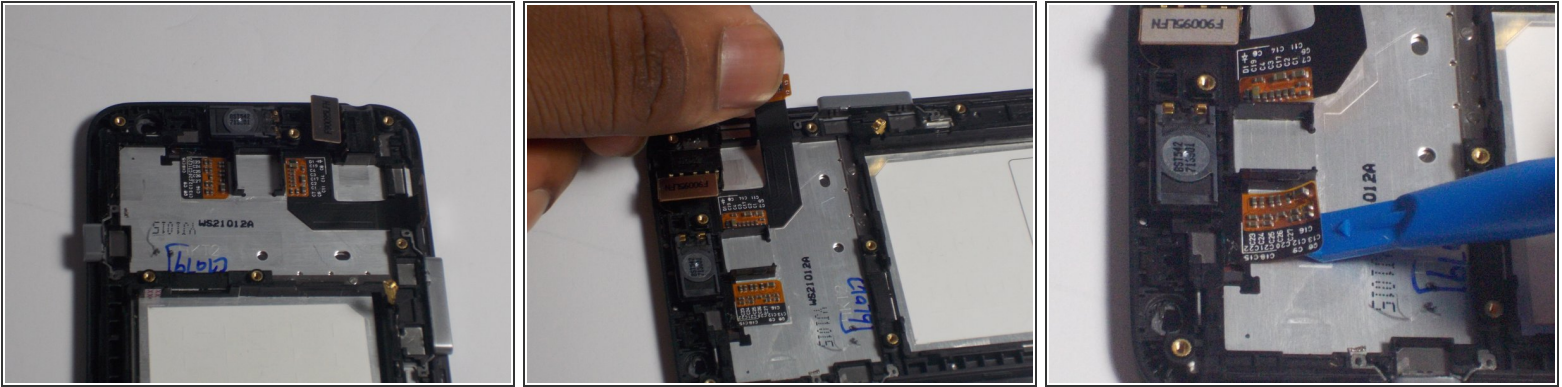
- Push the blue lifting tool up underneath the logic board and pull it upwards removing it from the device.

## Step 9 — Screen



- Using a prying tool, carefully remove the silver/ black tape used to hide the screens connectors.

## Step 10



- Using the blue lifting tool carefully remove the screens connectors.

## Step 11



- Flip the device so the screen faces you. Using a prying tool, at the corners on the screen begin to pry off the screen. (It will sound like tape being removed.) Avoid scratching the device with the prying tool.



## Step 12



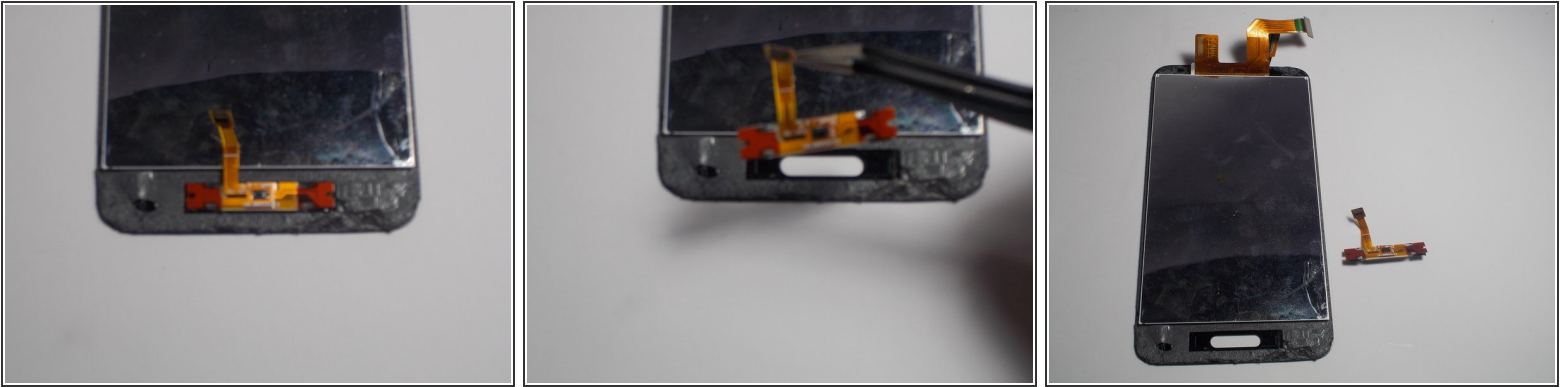
- Pull the screen off of the body of the device. (Mind the circuits when removing the screen. The home button is likely to fall off. )

## Step 13 — Home Button




- To begin this guide complete the LG Optimus Exceed 2 Screen Replacement Guide.

## Step 14



- Using tweezers lift the home button to remove the home button from the device.

 Do not yank the home button from the device as the home button connector may get damaged or break.

To reassemble your device, follow these instructions in reverse order.