



LG Optimus Exceed 2 Rear Camera Replacement

The removal of the stock Rear facing camera on an LG Optimus Exceed 2.

Written By: Carl Dorvilus



INTRODUCTION

If your rear camera takes bad pictures or is blurry in any way, you might want to replace the rear camera part. To do this please follow these steps below.

TOOLS:

- [iFixit Opening Tools](#) (1)
 - [Tweezers](#) (1)
 - [Phillips #000 Screwdriver](#) (1)
-

Step 1 — Battery



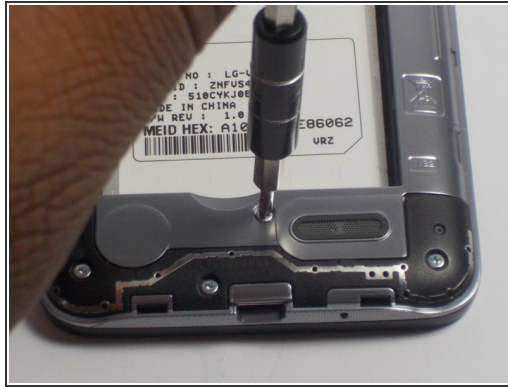
- Flip the device over and remove the back covering.

Step 2



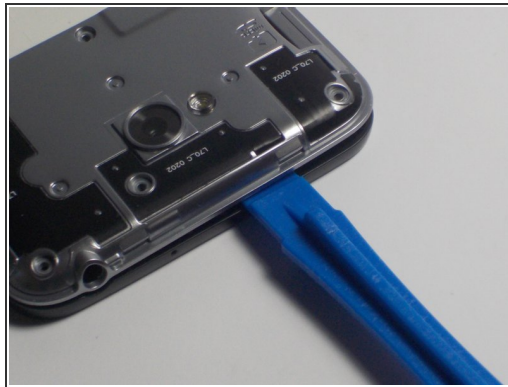
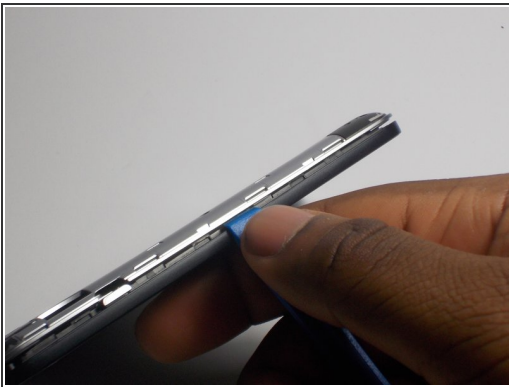
- Push on the top of the battery downward and pull the battery off of the device.

Step 3 — Rear Camera



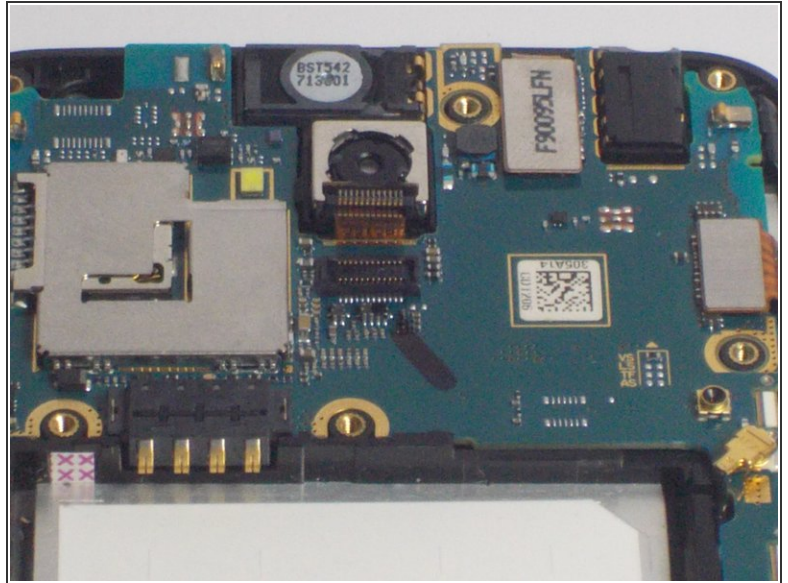
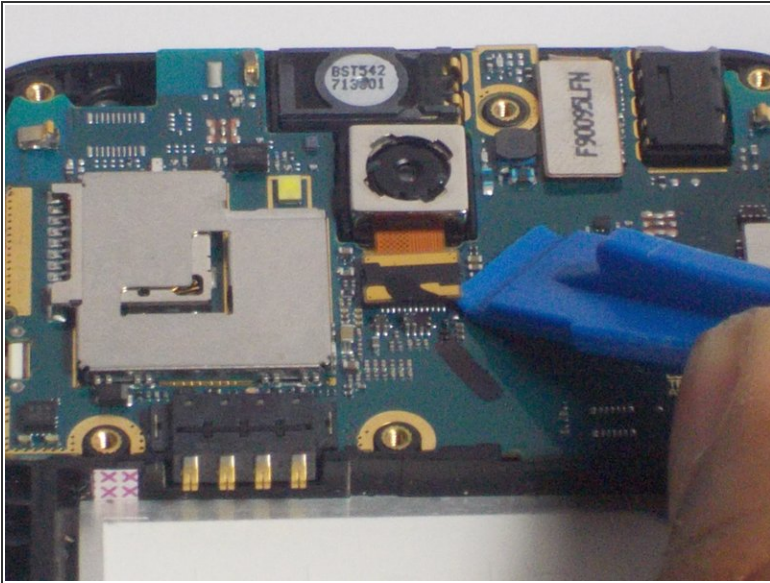
- Remove the eleven 4mm screws using a Philips head screw driver.

Step 4



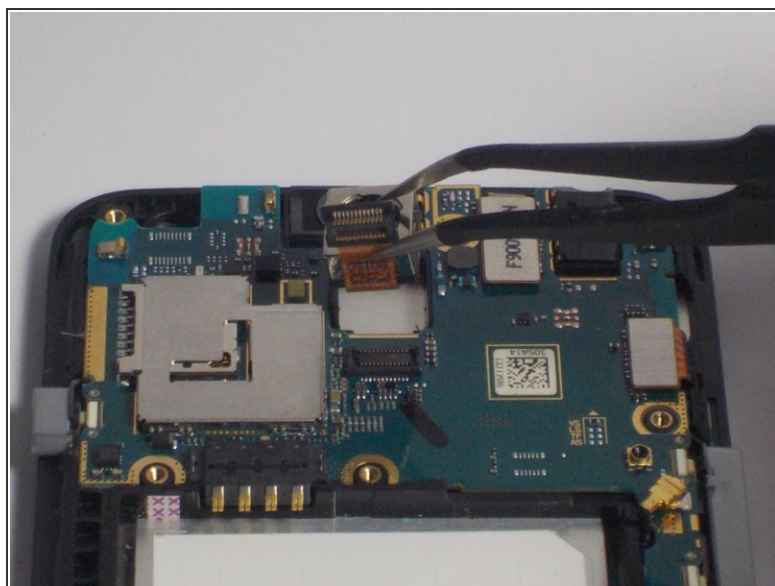
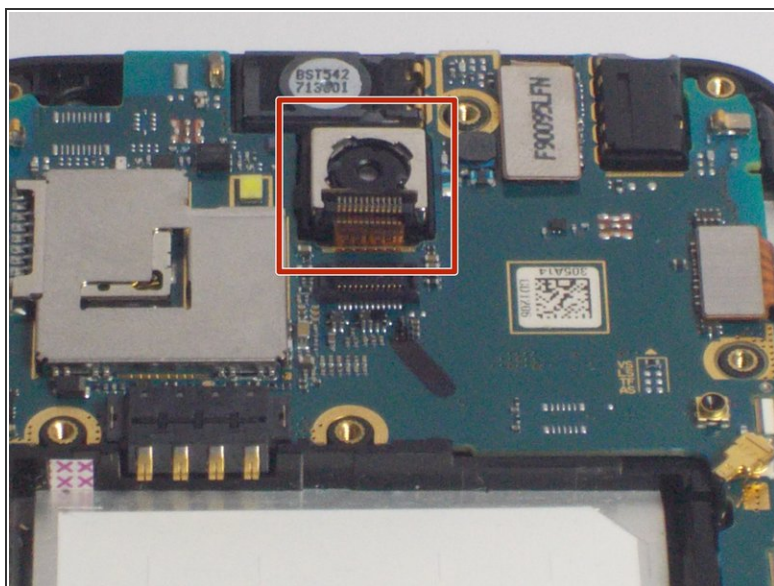
- Insert the plastic opening tool into the side of the device and pry off silver covering. Push up against the back covering when the tool is inserted to detach from the phone.
- ⓘ Make sure to detach all sides of silver covering before lifting it off the phone.

Step 5



- Using the prying tool detach the connector on the device.
- Insert the plastic opening tool underneath the connector and push tool down to lift the connector from the device.

Step 6



- Using tweezers lift the camera off of the device.
- To do so grasp the camera gently with the tweezers and pull the camera up out of the device.

To reassemble your device, follow these instructions in reverse order.