



# LG Optimus Exceed 2 Volume Button Replacement

The removal of the LG Optimus Exceed 2 volume buttons.

Written By: Carl Dorvilus



---

## INTRODUCTION

If the volume buttons on your LG Optimus Exceed 2 are not responding when you want to increase or decrease the volume on your phone, you may want to replace the buttons. In order to do that, please follow the steps below.



### TOOLS:

- [iFixit Opening Tools](#) (1)
  - [Tweezers](#) (1)
  - [Phillips #000 Screwdriver](#) (1)
-

## Step 1 — Battery



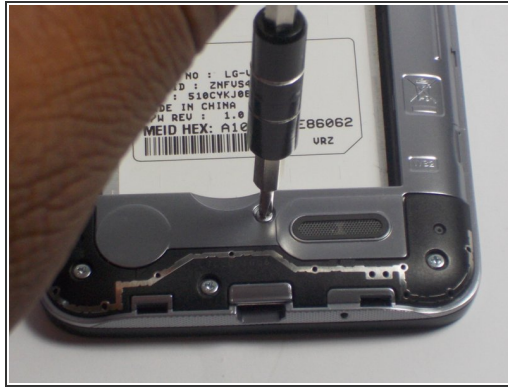
- Flip the device over and remove the back covering.

## Step 2



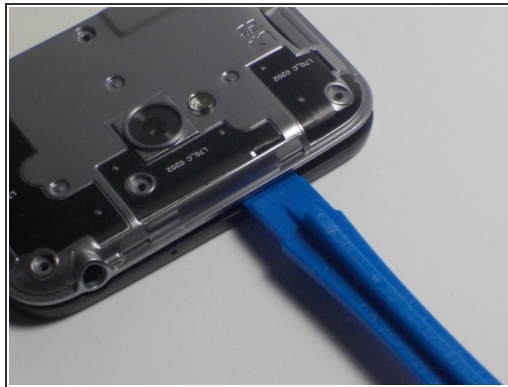
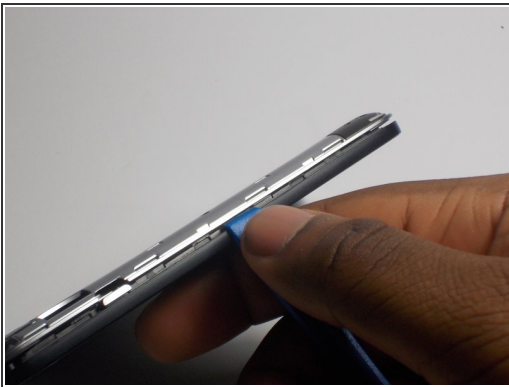
- Push on the top of the battery downward and pull the battery off of the device.

## Step 3 — Rear Camera



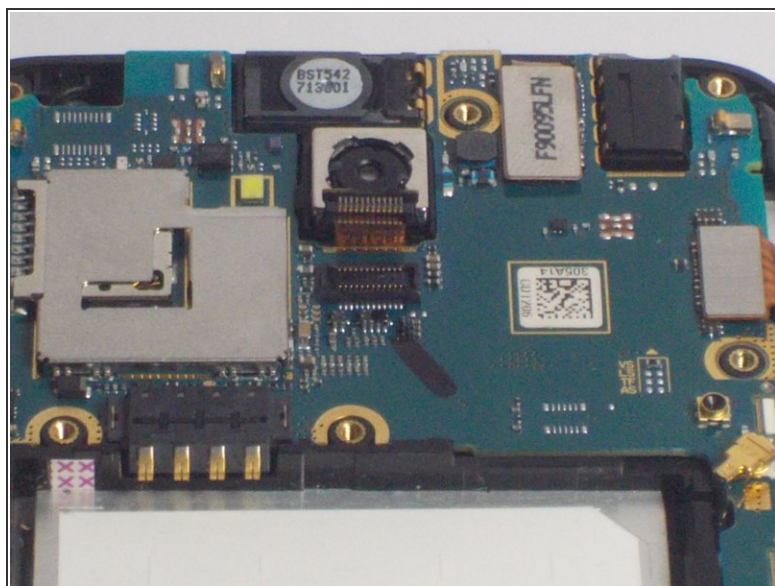
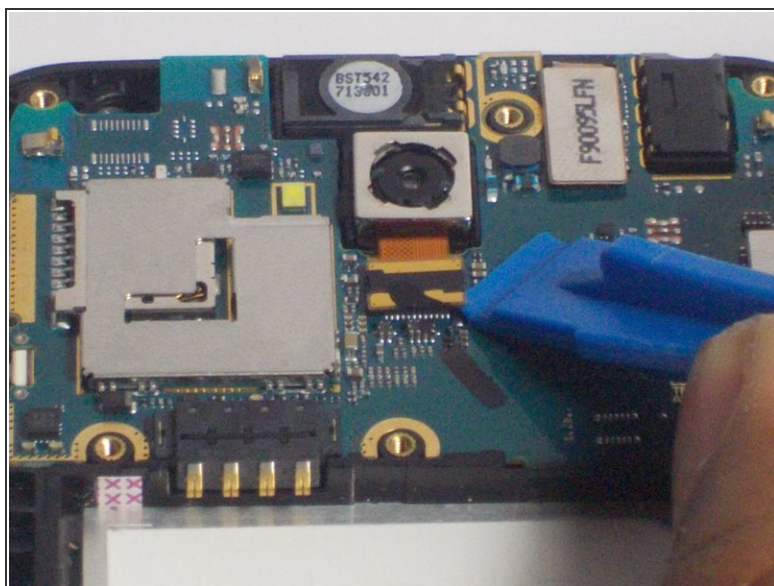
- Remove the eleven 4mm screws using a Philips head screw driver.

## Step 4



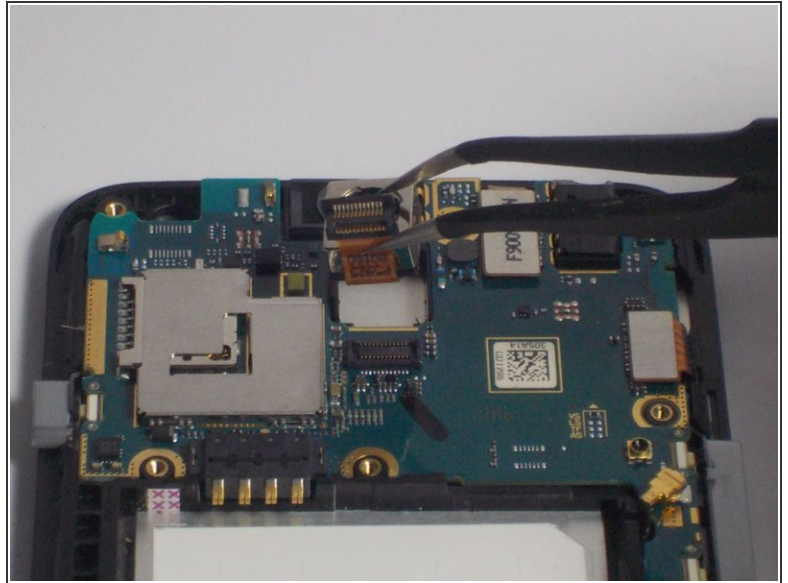
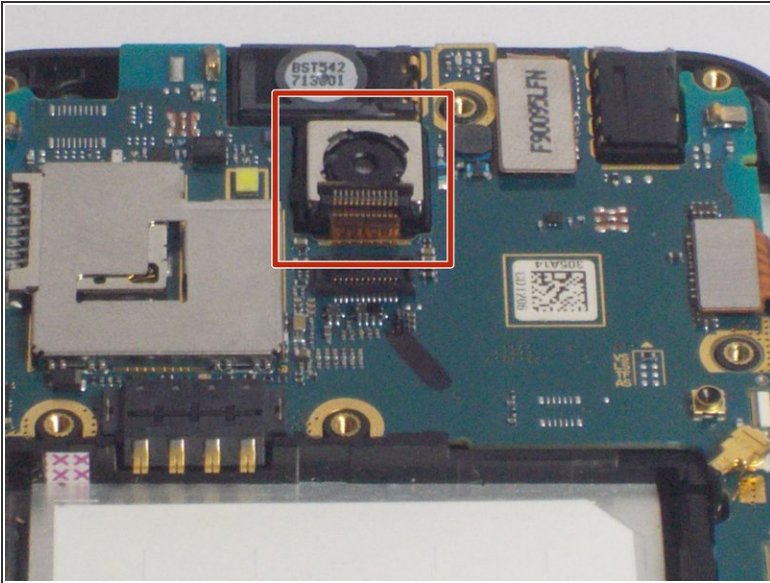
- Insert the plastic opening tool into the side of the device and pry off silver covering. Push up against the back covering when the tool is inserted to detach from the phone.
- ⓘ Make sure to detach all sides of silver covering before lifting it off the phone.

## Step 5



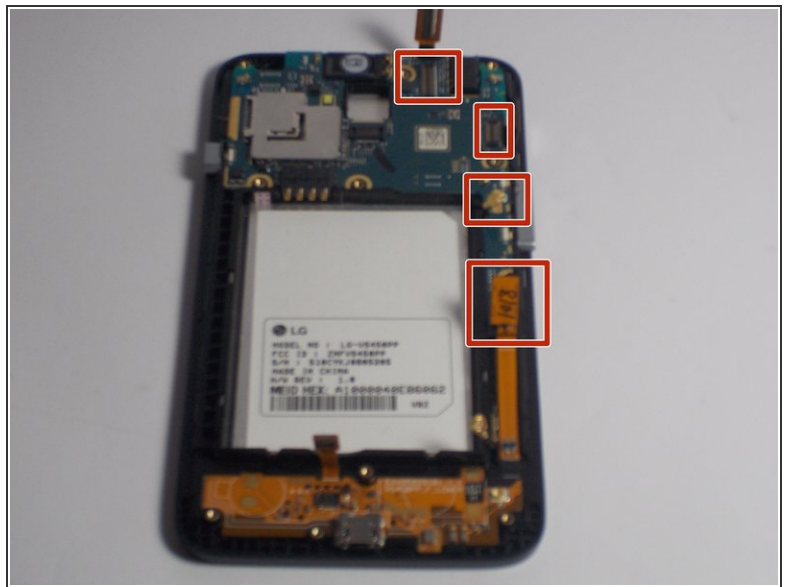
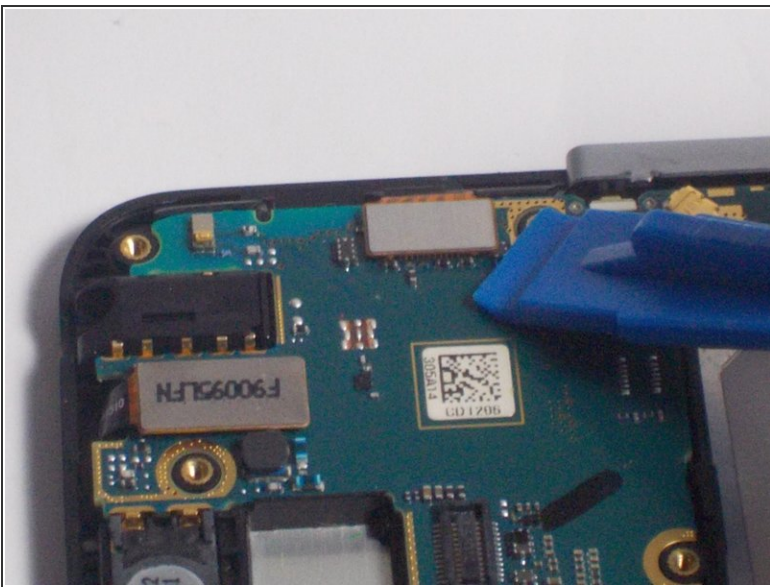
- Using the prying tool detach the connector on the device.
- Insert the plastic opening tool underneath the connector and push tool down to lift the connector from the device.

## Step 6



- Using tweezers lift the camera off of the device.
- To do so grasp the camera gently with the tweezers and pull the camera up out of the device.

## Step 7 — Motherboard



- Disconnect the remaining ribbon plugs and connectors. (Only remove the highlighted cables for the removal of the logic board.)

## Step 8



- Push the blue lifting tool up underneath the logic board and pull it upwards removing it from the device.

## Step 9 — Volume Button



- Begin this guide by completing the LG Optimus Exceed 2 Screen Replacement to step 2.

## Step 10



- With the device facing up lift with your fingers or the blue lifting tool to remove the volume buttons from the device.

To reassemble your device, follow these instructions in reverse order.