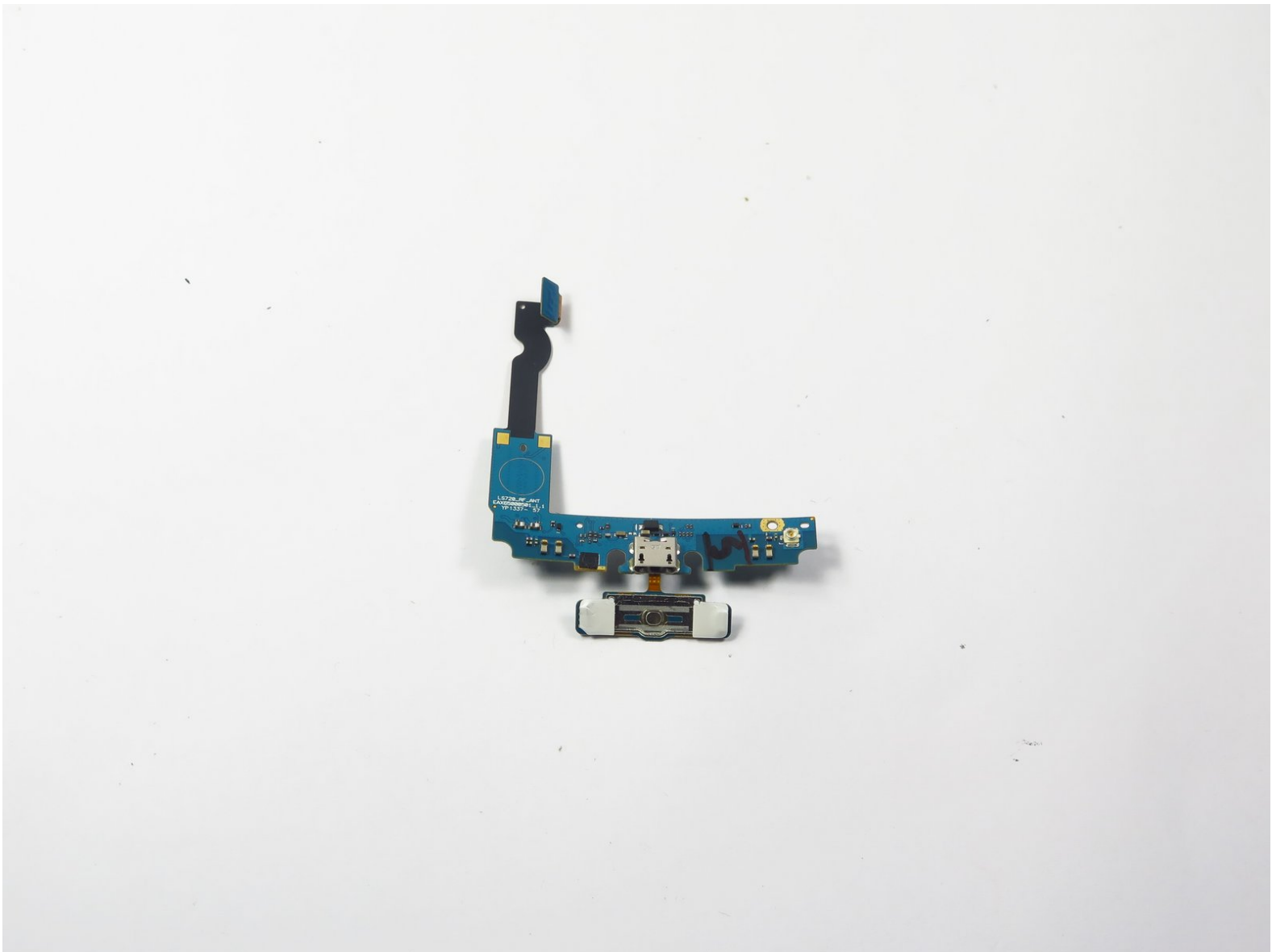




LG Optimus F3 Charging port unit Replacement

This is a replacement guide about how to remove the charging unit and the home button if either one is not function correctly.

Written By: Jonathan Fang





TOOLS:

- [64 Bit Driver Kit](#) (1)
- [iFixit Opening Tools](#) (1)
- [Tweezers](#) (1)

Step 1 — Motherboard



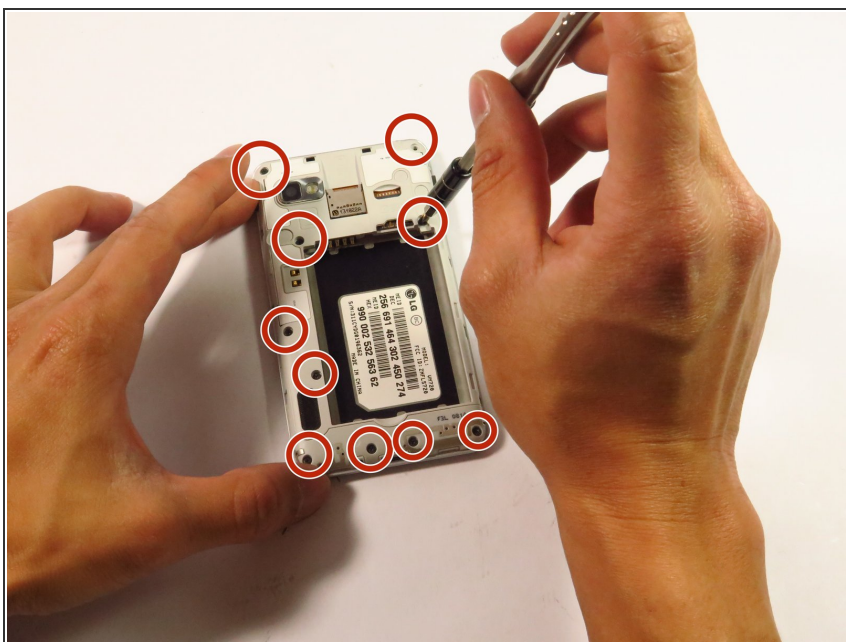
- Turn the device so that the back faces up.
- ❗ It is easiest to open the case near the charging port located at the bottom of the phone.
- Remove the back case by pushing up on the back and pulling down on the face as illustrated in the image.

Step 2




- ❗ With back case removed, the battery is visible. The battery is the large square object.
- Remove the battery by flipping the bottom edge upward to separate the battery from the case.

Step 3



- Remove 10 1.0 mm screws located on the back of the device.

 Refer to the outlined locations in the image for the screws.

Step 4



- Use the plastic opening tool to separate the inner case from the device.
- Wedge the plastic opening tool between the case.
- Wiggle the tool and use leverage to pry the case apart.

Step 5



- ❗ The camera unit is located at the top left of the phone. The camera is a silver box with a black lens. The image pin points where the camera is on the motherboard.
- Use the plastic opening tool to separate the camera from the motherboard.
- Wedge the plastic tool between the camera and the motherboard to loosen the camera unit.

Step 6



- Use a pair of tweezers to disconnect and remove the rear facing camera.

Step 7



- Use the plastic opening tool to separate the sim card and the memory card connector from the motherboard.

⚠ Note that the sim card and the memory card connector are one unit.

- Wedge the plastic tool to lift up the sim-memory unit from the motherboard.

Step 8



- Use the plastic opening tool to remove the charging port unit.
- Wedge the plastic opening tool between the charging port unit and the motherboard to separate the port.

Step 9



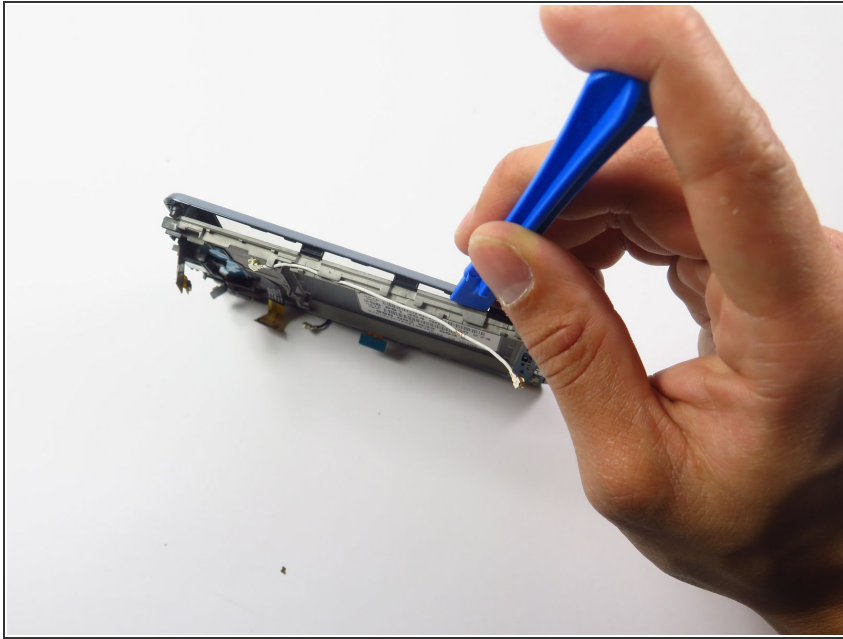
- Use the plastic opening tool to remove the motherboard located directly above the battery encasement.
- ⓘ The motherboard is an L-shaped unit above and to the left of the battery encasement.
- Wedge the plastic opening tool between the circuit board and the motherboard to separate the unit.

Step 10 — Charging port unit



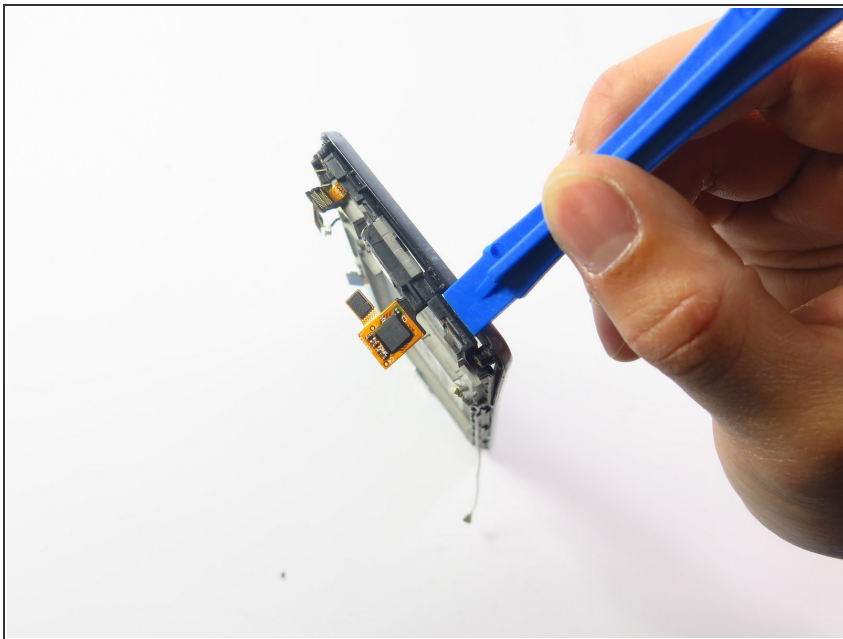
- Remove one 1.0 mm screw.

Step 11



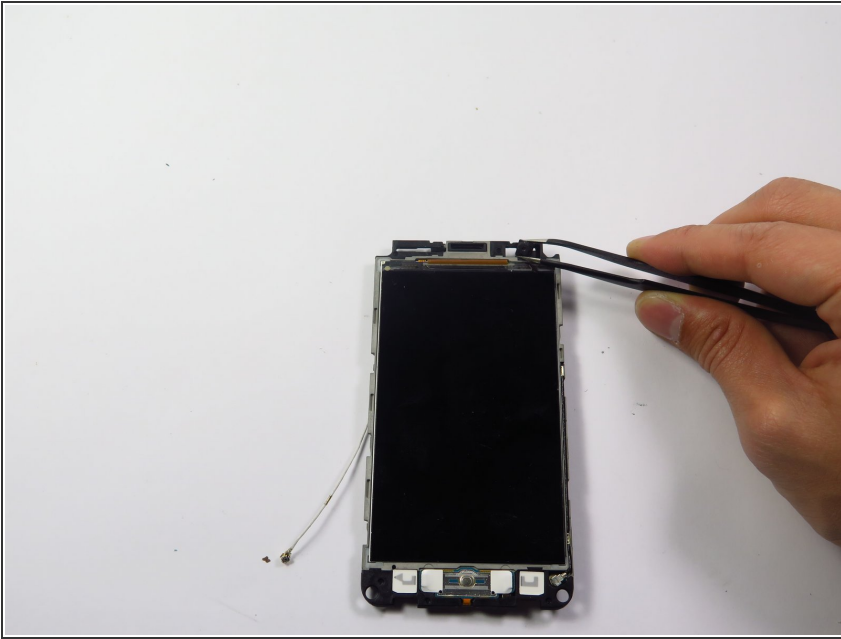
- Use a plastic opening tool to remove front glass protector.

Step 12



- Use the plastic opening tool to remove front glass cover carefully. Try not to break the connector.

Step 13



- Remove the front facing camera.

Step 14



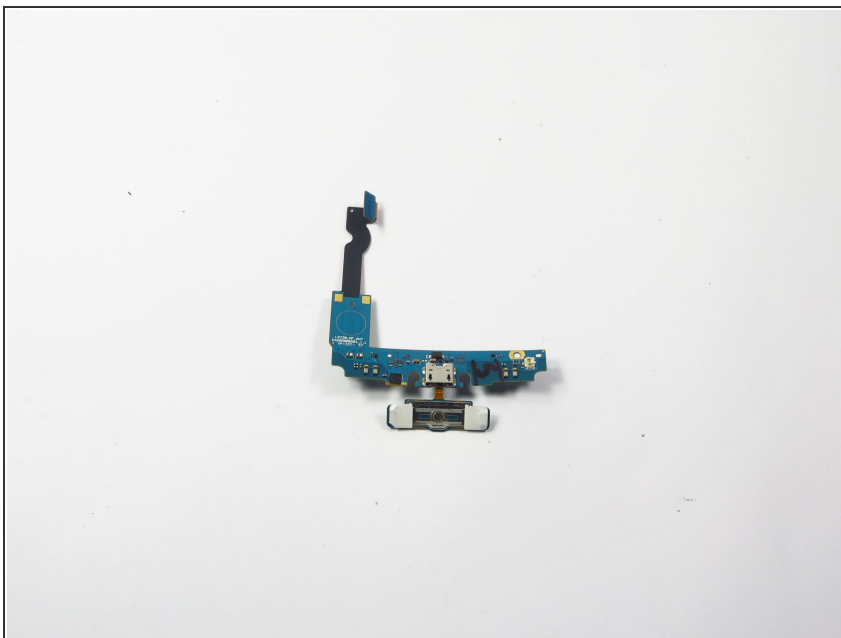
- Use the plastic opening tool to carefully remove the home button board. It is attached with double-sided tape.

Step 15



- Use the plastic opening tool to remove the charging port unit.

Step 16



- You are all set.

To reassemble your device, follow these instructions in reverse order.