



LG Optimus F3 MicroSD Card Replacement

This guide is to replace the SD Card of the LG VM720.

Written By: Basil George



INTRODUCTION

If the SD card exceeds its memory capacity, use this guide to replace the SD card

Step 1 — Removing the Back Cover



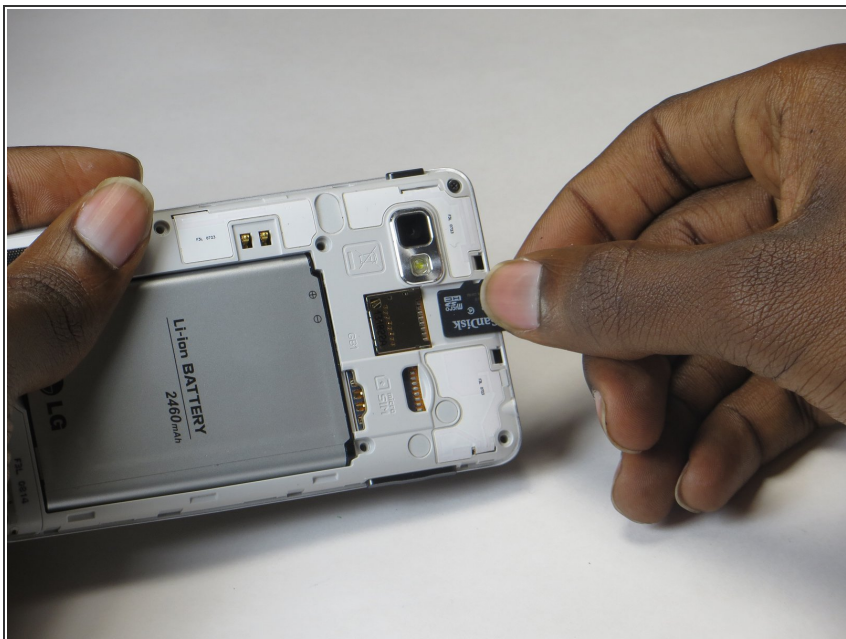
- Remove back cover of the LG VM720

Step 2 — Locating the SD Card



- When the back cover is completely removed, locate the sim card slot. It should be to the right of the camera and it is clearly labeled "Micro SD"

Step 3 — Removing the SD Card



- Remove the SD card in the opposite direction of the battery.

Step 4 — Replacing the SD Card



- You should now be able to put in a new SD card in that same slot.

To reassemble your device, follow these instructions in reverse order.