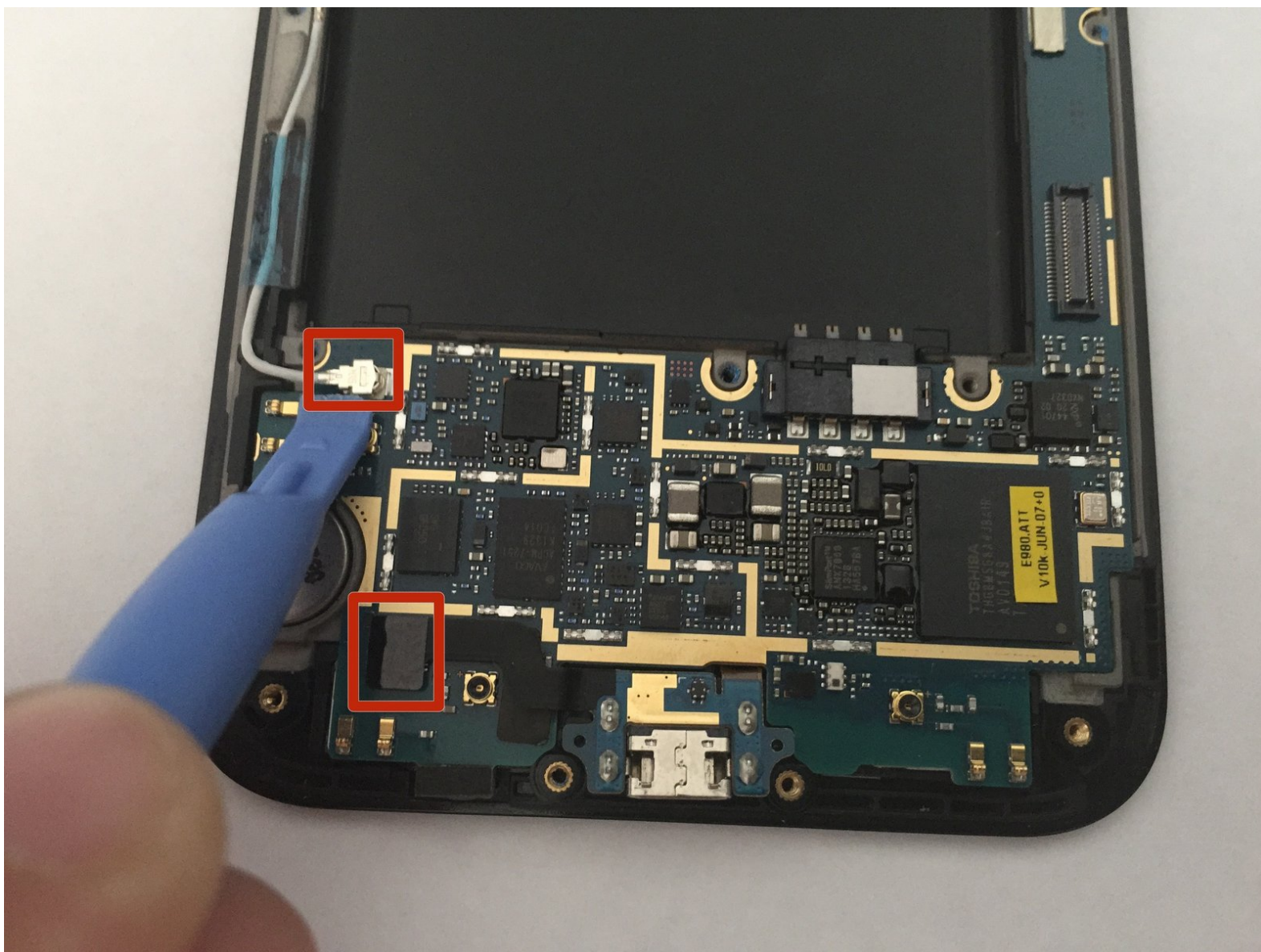




LG Optimus G Pro Motherboard Replacement

This guide will show you how to remove the Logic board, and the connections that hold it too the phone.

Written By: Wesley Pate



INTRODUCTION

Here you're going to learn to remove the logic board, which controls much of the phone's electronic functions. Make sure to do the prerequisite guide before trying this one.

TOOLS:

- [iFixit Opening Tools](#) (1)
 - [Spudger](#) (1)
-

Step 1 — Remove Back Cover.



⚠ Make sure before you begin working on your device, that the device is not charging.

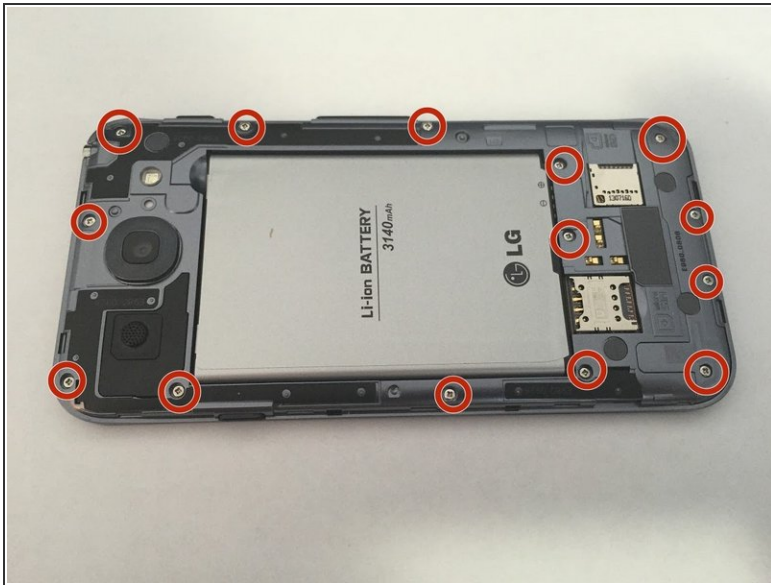
- Once you have access to the phone, there is a small indent on the bottom left side. Use your fingernail or a plastic opening tool to pry from here and pull off the back casing.

Step 2 — Remove the Battery.



- Once you have properly removed the outer casing, the back should look as so.
- To remove the battery, pull up from the red mark using your finger. The battery should come up at an angle, and easily be able to be removed.
- Once the battery is removed you may safely proceed to the next step.

Step 3 — Screw Removal



- Make sure you remove the battery first. You will see that there are 14 screws on the back of the inner case. Use the Phillips head screwdriver to remove each of the screws, make sure to put the screws in a safe place where they will not get lost.

Step 4 — Remove Cover



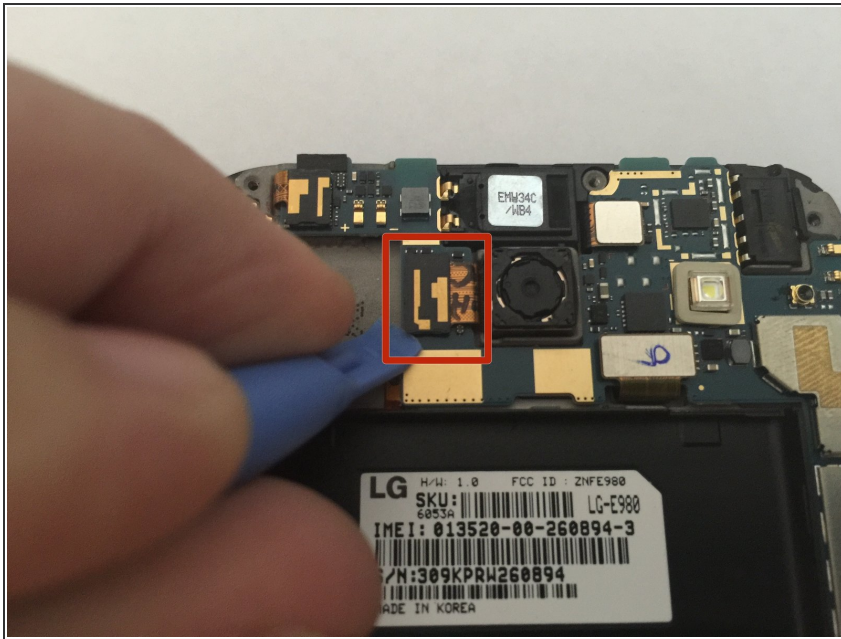
- Once you have removed all the screws, you can begin removing the inside cover.
- Insert the opening tool using a sliding motion into one of the corners and move it along the edges of the inside cover. This will loosen the edges and the inside cover will pry apart from the shell.

Step 5 — Completion



- The inner cover is now removed, you now have access to the many parts on the inside of the phone.

Step 6 — Remove the Ribbon Cable



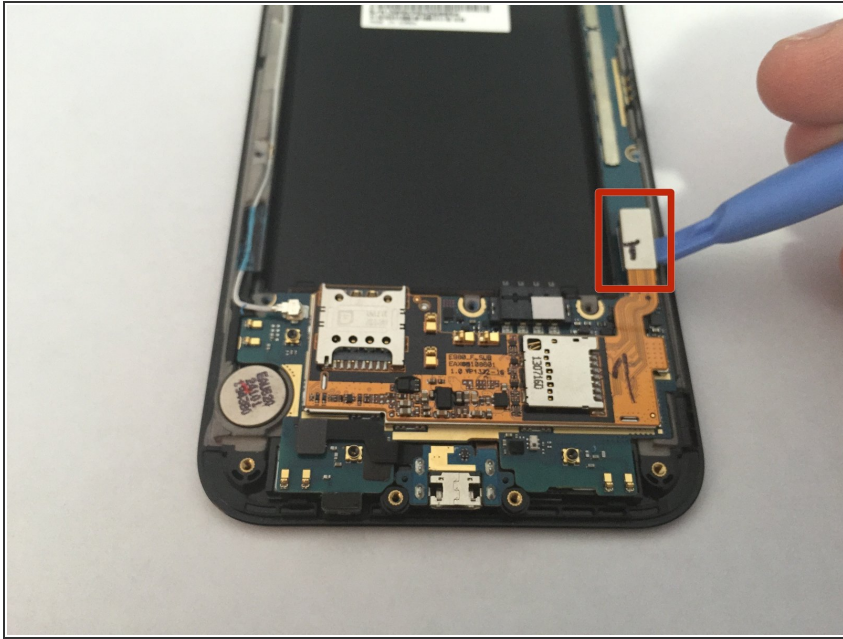
- Using a plastic opening tool, pry the connection between the cable and the phone. With even pressure the cable should disconnect from the logic board easily.

Step 7 — Remove the Camera



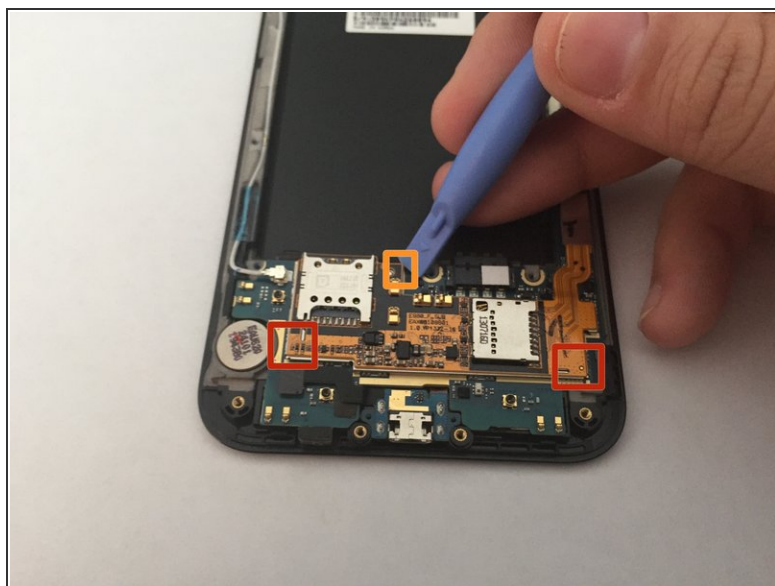
- After removing the the Ribbon Cable, the Rear-Facing Camera should be able to be removed easily with your fingers.


Step 8 — Remove the Ribbon Cable



- Using your plastic opening tool, disconnect the connection between the phone and the ribbon cable. Make sure to use even pressure as you apply it to the cable.

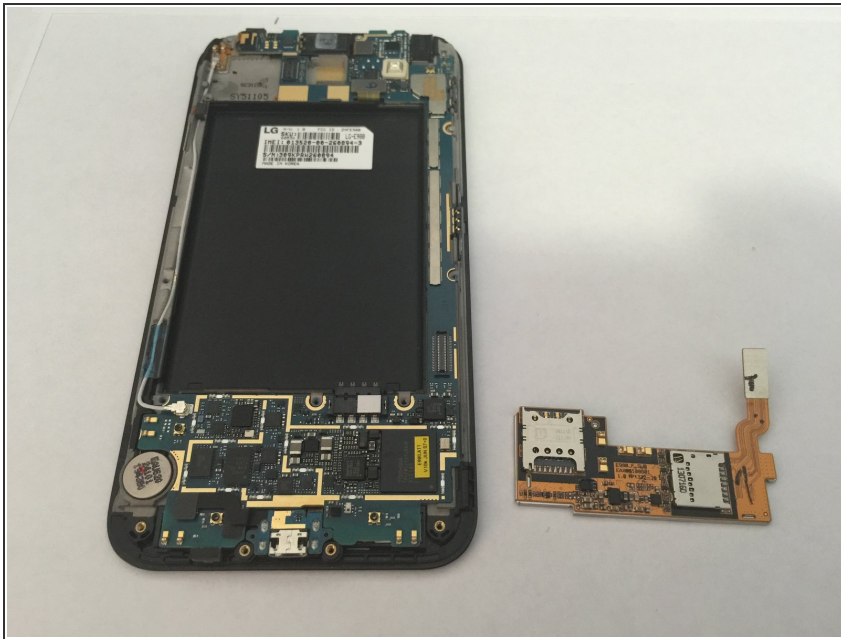
Step 9 — Remove the Sisterboard.



 In this next step it is easy to pry the wrong piece. Make sure to pry at the metal platform that the sister board sits on, not the orange printed circuit board itself.

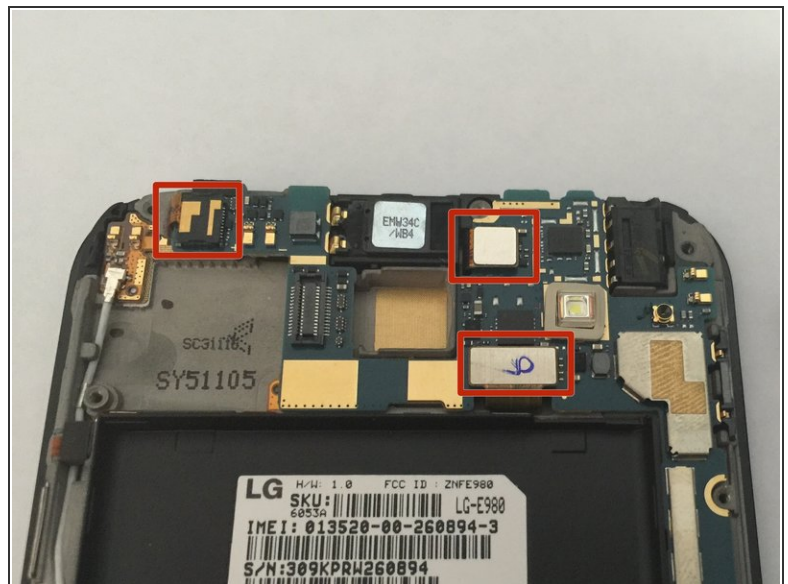
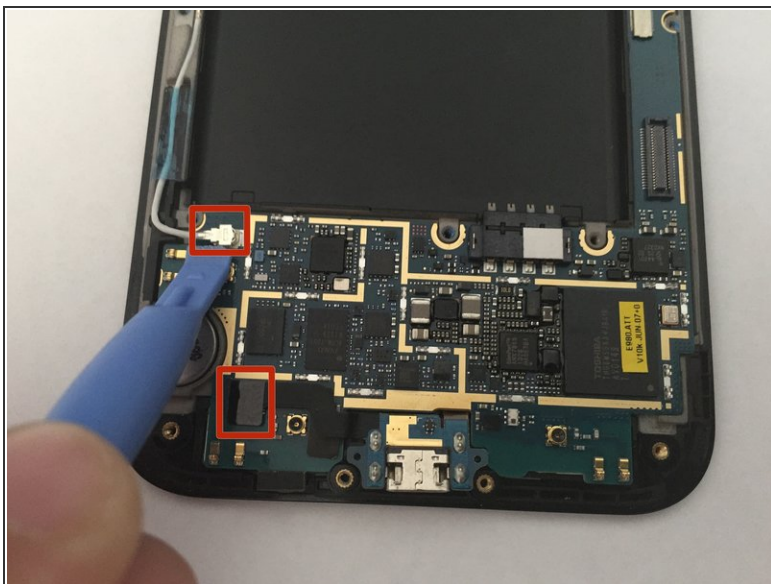
- Using your prying tool, pry at the right red marked corner, making sure to pull at the metal platform under the circuit board. Once it is raised slightly, pull along the underside until the left red mark. This should loosen the board and allow it to be removed.
- If it's still unable to be removed, try to pry at the orange mark, making sure to pull at the same metal platform.

Step 10 — Completed.



- You can now raise and remove the sisterboard with your plastic opening tool or your fingers.

Step 11 — Remove Ribbon Cables



- Use the plastic opening tool to disconnect the 4 ribbon cable connections and the antenna attached to the logic board.

Step 12 — Remove Adhesive.



- The logic board is connected to the under side of the phone with a bit of adhesive. Using a spudger, place it under the logic board from the top right corner and gently slide it toward the center orange mark where the adhesive is. Apply a little bit of pressure parallel to the logic board and the Logic board should loosen from the phone.

To reassemble your device, follow these instructions in reverse order.