



# LG Optimus G Pro Speaker Replacement

This guide will show you how to remove the speaker in the LG Optimus G Pro.

Written By: Wesley Pate



## INTRODUCTION

Make sure that have completed the prerequisite guides to remove the inner cover, so that the speaker may be accessed. After that, this guide will show you how to replace your speaker.



### TOOLS:

- [iFixit Opening Tools](#) (1)
  - [Phillips #0 Screwdriver](#) (1)
-

## Step 1 — Remove Back Cover.



**⚠ Make sure before you begin working on your device, that the device is not charging.**

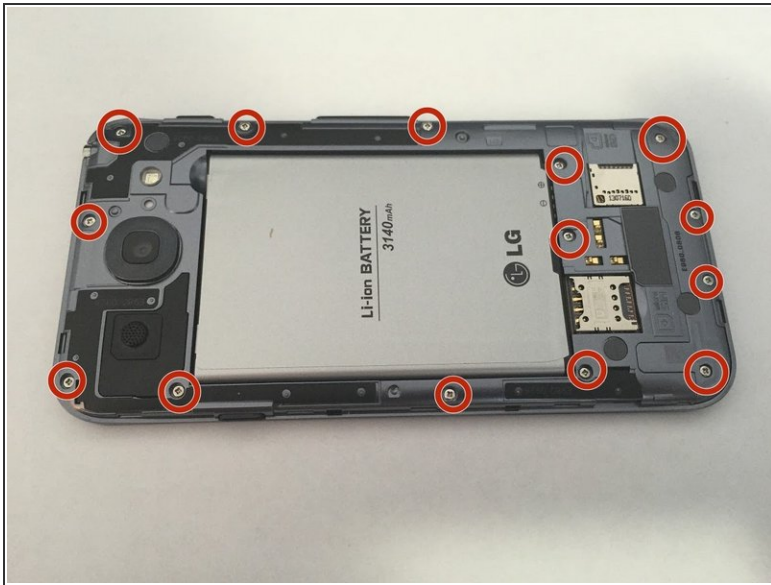
- Once you have access to the phone, there is a small indent on the bottom left side. Use your fingernail or a plastic opening tool to pry from here and pull off the back casing.

## Step 2 — Remove the Battery.



- Once you have properly removed the outer casing, the back should look as so.
- To remove the battery, pull up from the red mark using your finger. The battery should come up at an angle, and easily be able to be removed.
- Once the battery is removed you may safely proceed to the next step.

### Step 3 — Screw Removal



- Make sure you remove the battery first. You will see that there are 14 screws on the back of the inner case. Use the Phillips head screwdriver to remove each of the screws, make sure to put the screws in a safe place where they will not get lost.

### Step 4 — Remove Cover



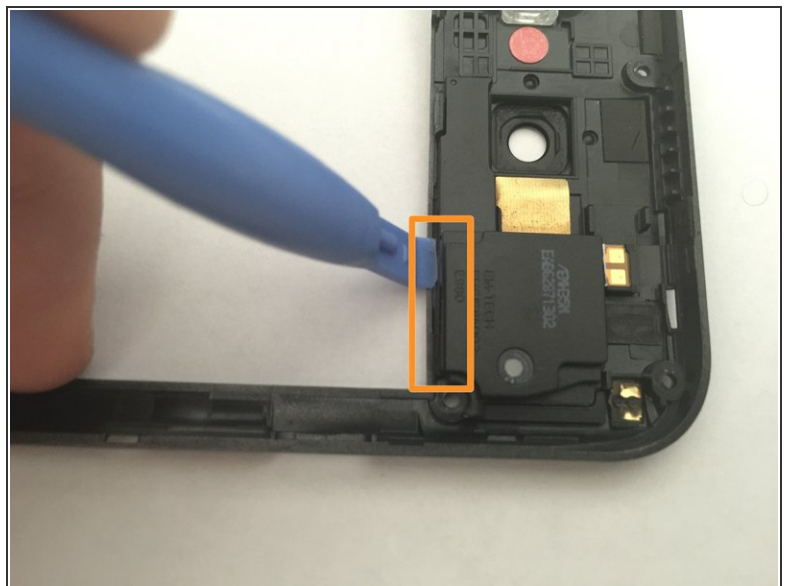
- Once you have removed all the screws, you can begin removing the inside cover.
- Insert the opening tool using a sliding motion into one of the corners and move it along the edges of the inside cover. This will loosen the edges and the inside cover will pry apart from the shell.

## Step 5 — Completion



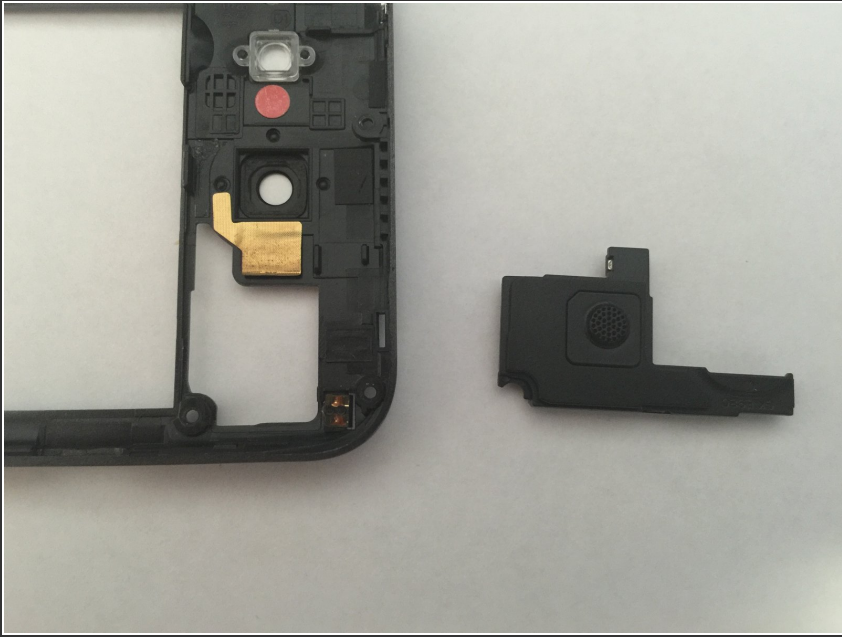
- The inner cover is now removed, you now have access to the many parts on the inside of the phone.

## Step 6 — Speaker Removal.



- The inner side of the inside cover houses the speaker module.
- Use the plastic opening tool to pry the connection between the inner side and the speaker.

## Step 7 — Completion



- You now have removed the speaker for an easy replacement.

To reassemble your device, follow these instructions in reverse order.