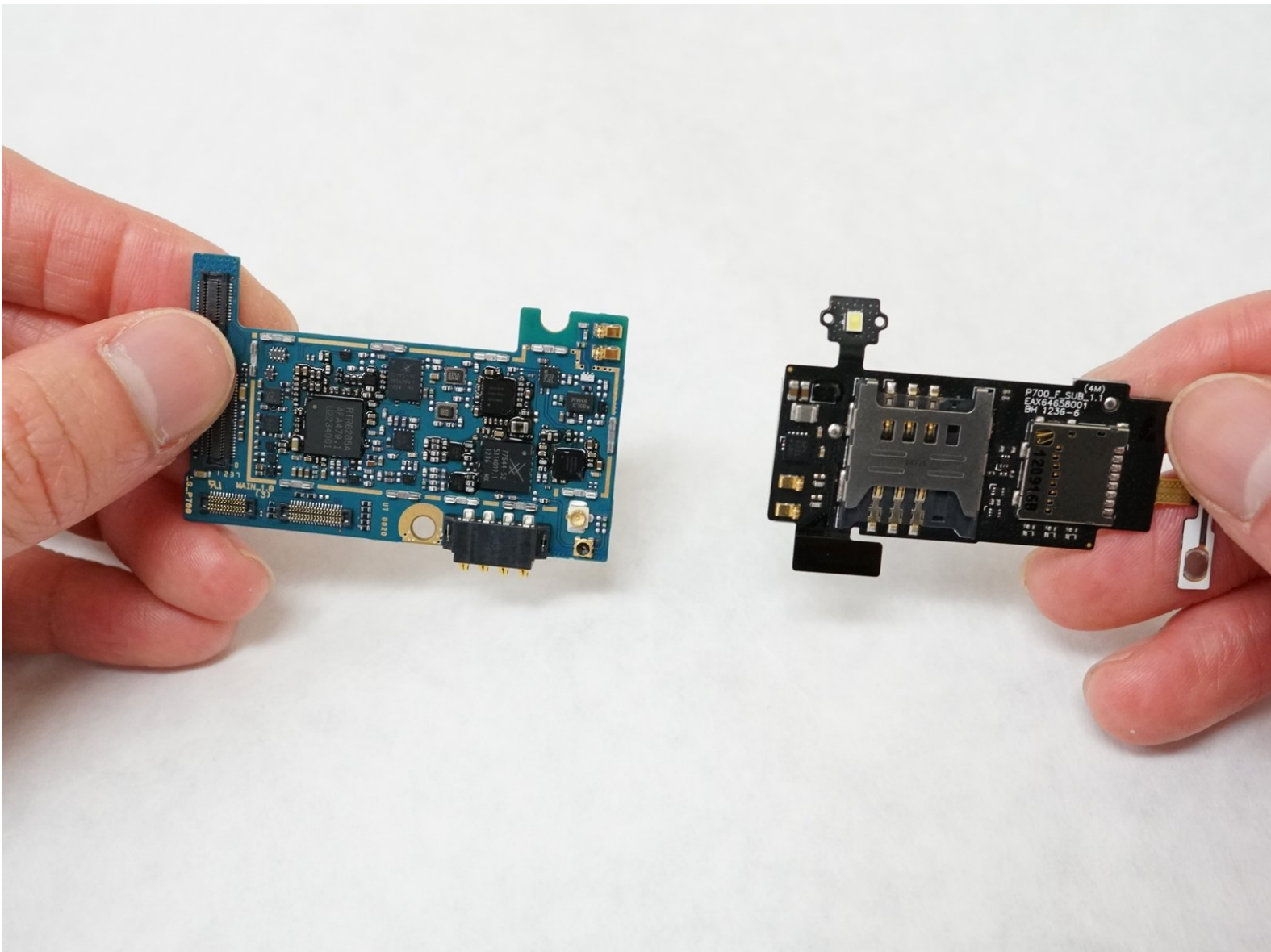




# LG Optimus L7 P705 SIM Card Slot Replacement

This guide is to introduce step by step about replacing the SIM Card Slot of the LG Optimus L7 P705.

Written By: Yanxiang Ding



---

## INTRODUCTION

This guide is to introduce step by step about replacing the SIM Card Slot of the LG Optimus L7 P705.

---

### TOOLS:

- [iFixit Opening Tools](#) (1)
  - [Phillips #000 Screwdriver](#) (1)
-

## Step 1 — Home Button



- Insert a plastic opening tool between the seams of the device and pry the back cover away from the phone.
- Remove the battery and SIM card.

## Step 2



- Remove the twelve screws using the Phillips 000 screwdriver.

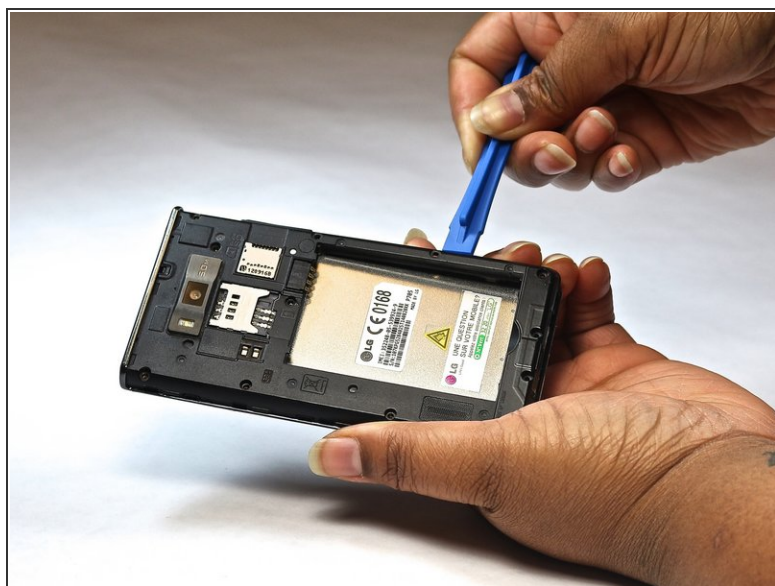


### Step 3



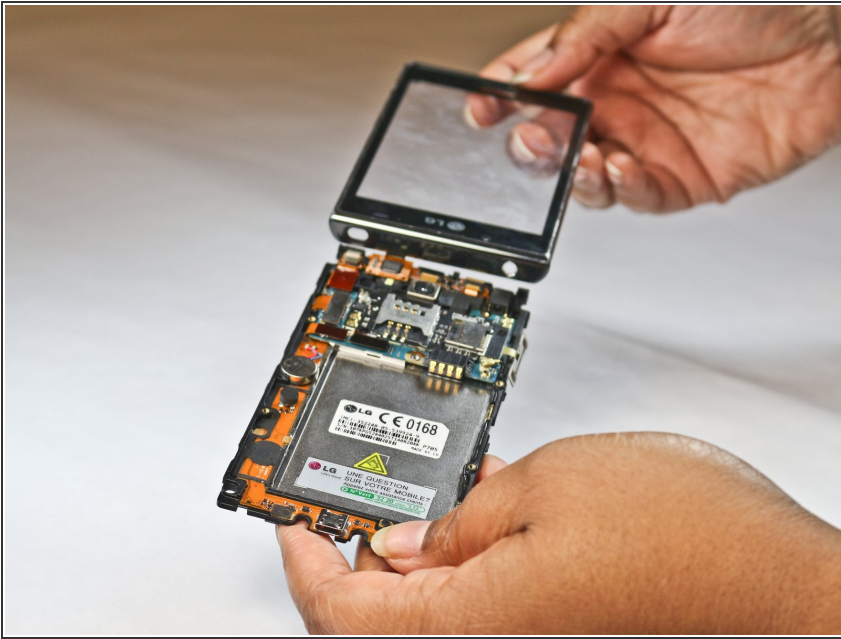
- Remove bottom plate where the charger port is located.

### Step 4



- Insert a plastic opening tool between the seams of the device and apply some pressure to lift off the cover.

## Step 5



- Flip over to the face of the device.
- Lift off the glass screen (display).

## Step 6



- Remove the home screen button.  
Replace as needed.



## Step 7 — SIM Card Slot



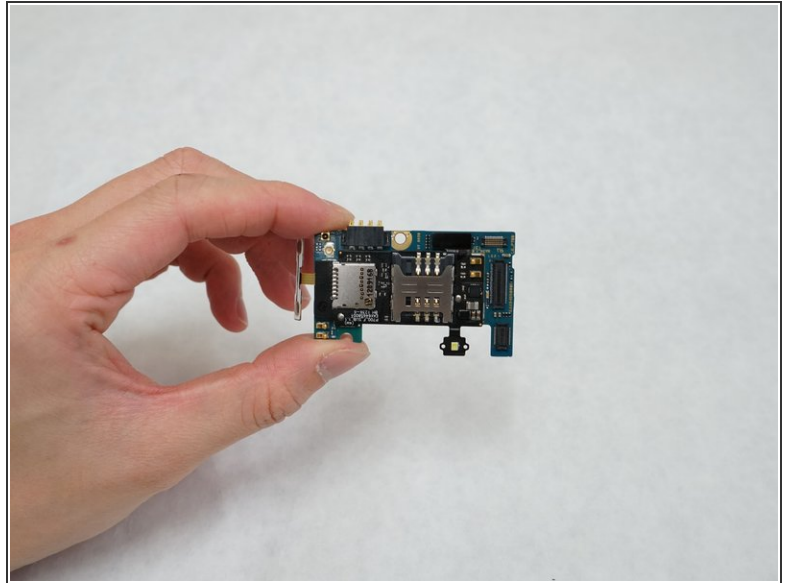
- Flip over to the back of the device
- Using the plastic spudger, lift off the three board-to-board connectors on the left-hand side of the device.

## Step 8



- Using a plastic spudger, lift off the wire connector at the right bottom of the board.

## Step 9



- Detach the mount including both the SIM card and the motherboard from the device.

To reassemble your device, follow these instructions in reverse order.