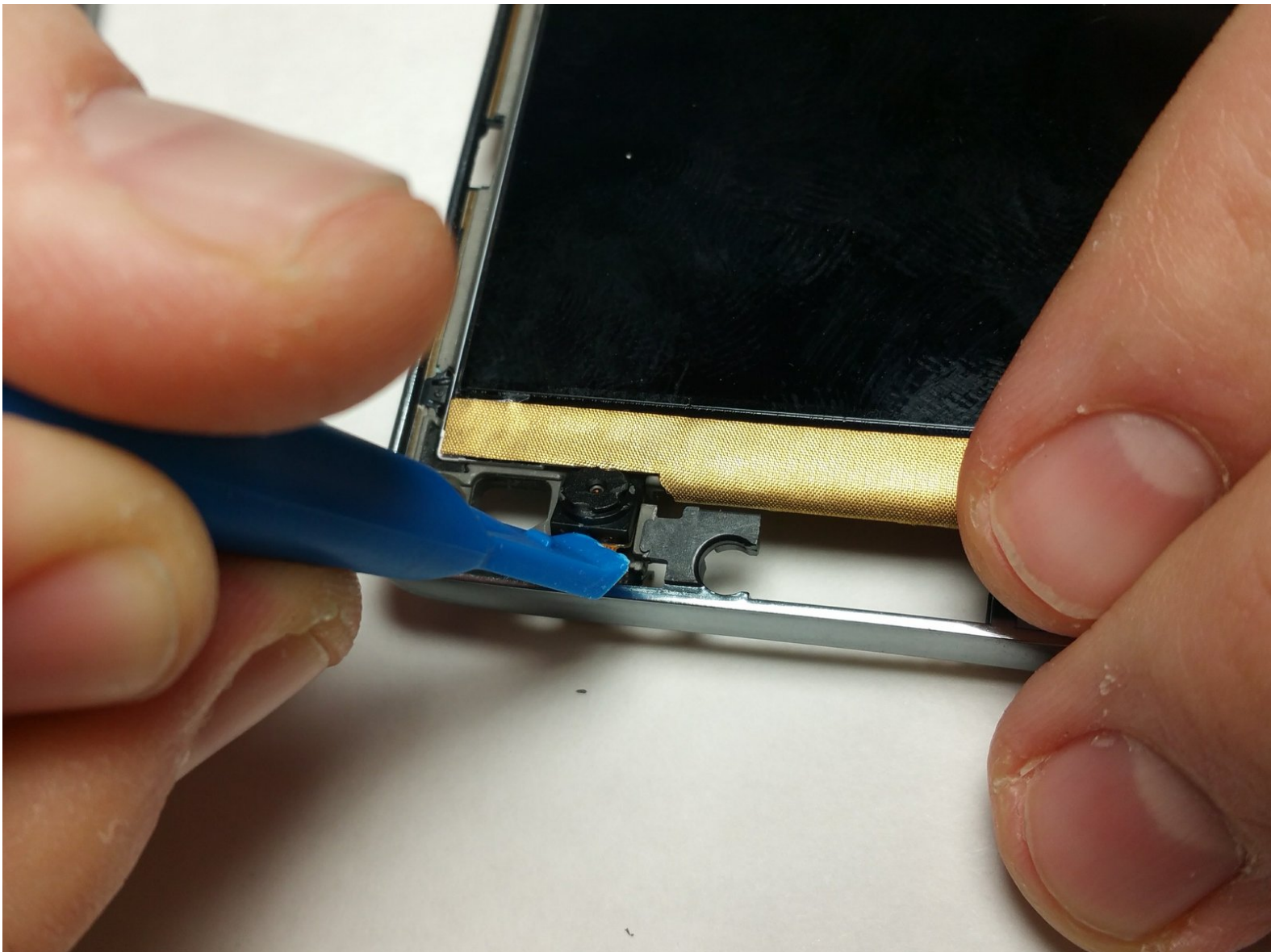




LG Optimus L9 P769 VGA Front Facing Camera Replacement

This guide will show the user how to remove and replace the VGA front facing camera in an LG Optimus L9 P769 phone.

Written By: Blake Bennett



INTRODUCTION

This repair requires the user to disassemble the device completely, removing the screen to reach the front facing camera. The user should be cautious when removing ribbon cables to ensure that they are not torn or broken. The user should also take extreme care when removing the motherboard as it is very delicate and easily damaged.

TOOLS:

- [iFixit Opening Tools](#) (1)
 - [Phillips #000 Screwdriver](#) (1)
 - [1.0 mm Flathead Screwdriver](#) (1)
 - [Tweezers](#) (1)
-

Step 1 — Motherboard



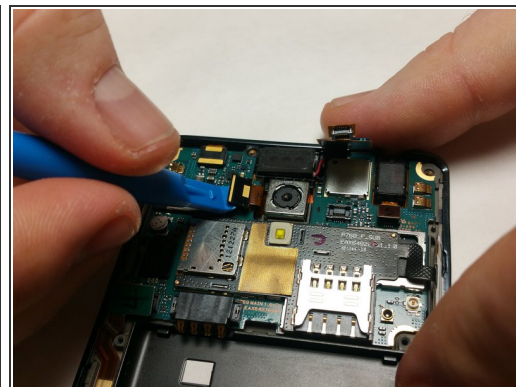
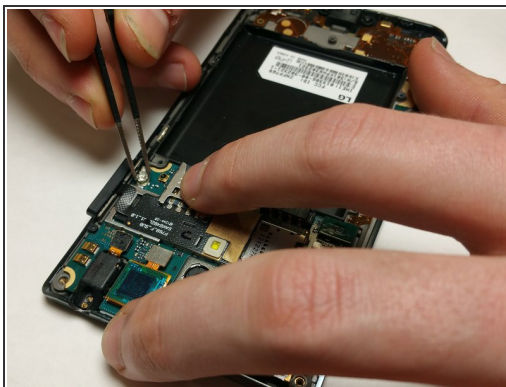
- Start by placing the device face down and remove the back cover.
- Remove the battery from the phone by lifting it using your finger or the prying tool

Step 2



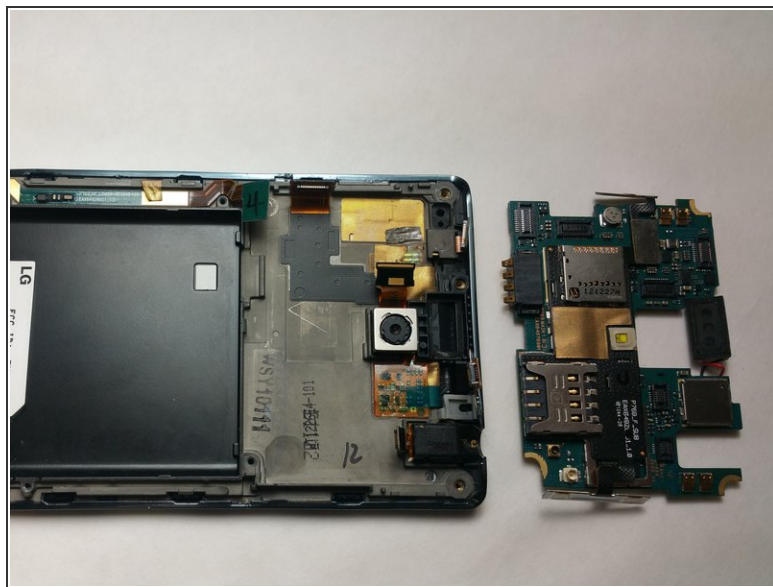
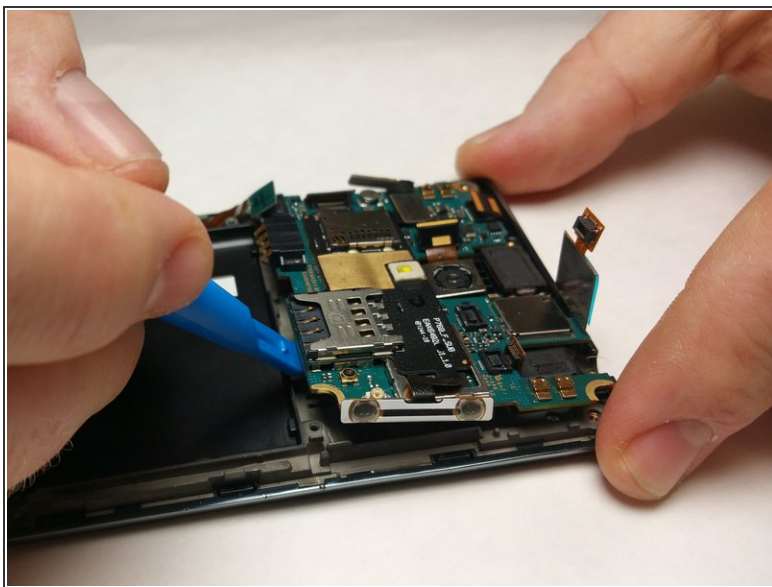
- Remove all 10 of the 4.5mm Phillips screws that holds the back frame to the case of the phone
 - Using a small plastic prying tool, carefully remove the back frame by prying on the sides of the device.
- ⚠ Do be careful when prying back frame and removing it as too much force may result in damaging the frame.

Step 3



- Using tweezers, pinch the sides of the antenna node and pull straight up.
- Using a small prying tool, carefully remove the ribbon cables attached to the motherboard.

Step 4




- Using a spudger or small prying tool, lift up the motherboard from the chassis of the device.

Step 5 — Display Screen



- Using a spudger or small prying tool, pry off the latches that connects the digitizer to the chassis carefully.

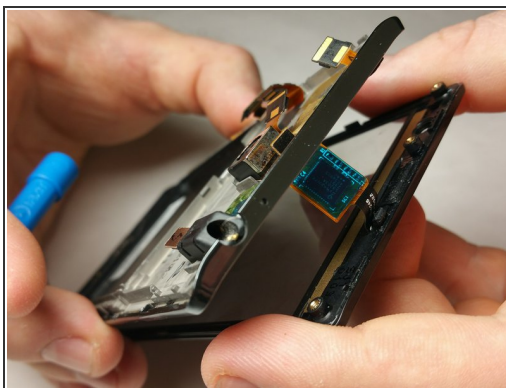
 Do not force open as the latches attaching the digitizer to the chassis as they are easily damaged.

Step 6



- Once the digitizer has been removed, turn the phone face down and remove the plastic housing for the front speaker. It should come off easily.

Step 7



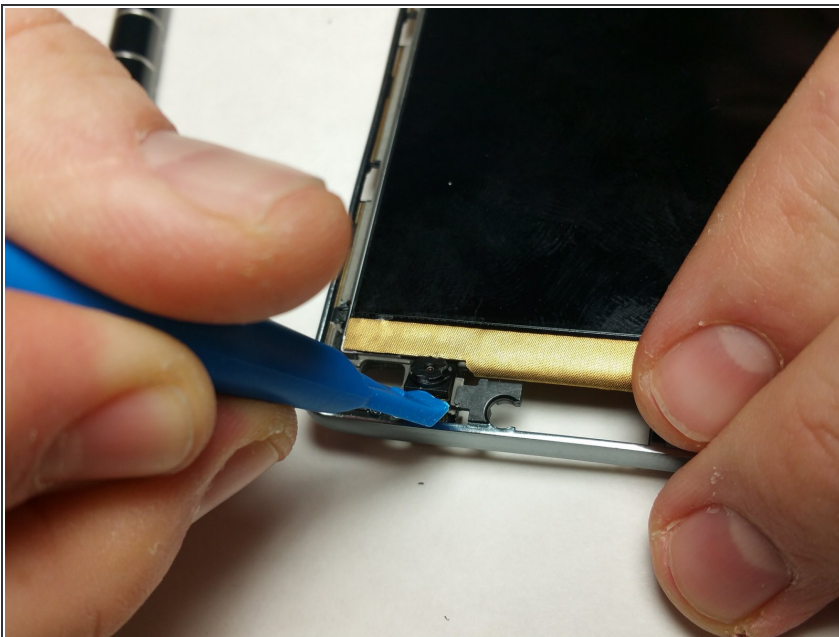
- Slide off the connector through the hole of the chassis slowly to avoid damaging it.

Step 8



- Remove the primary or rear camera using a small opening tool to remove the adhesive and lift the camera up using a pair of tweezers.
 - Using the same small opening tool, remove the connector that is taped to the chassis of the phone.
- ⚠ Make sure that every bit of the connector is no longer sticking to the chassis of the phone.
- ℹ Similar to the digitizer, the connector should be able to slide through the hole of the chassis, completely detaching the LCD screen from the phone.

Step 9 — VGA Front Facing Camera



- Once the screen has been removed, use a prying tool to lift off the front facing camera.

To reassemble your device, follow these instructions in reverse order.