



LG Optimus L90 Motherboard Replacement

Replace the motherboard of your LG Optimus L90 Motherboard.

Written By: Alex Arruda



INTRODUCTION

Use this guide to replace the motherboard of the LG Optimus L90 Motherboard. The motherboard is a crucial component that allows interaction between other parts of the device.

TOOLS:

- [iFixit Opening Picks set of 6](#) (1)
 - [iFixit Opening Tools](#) (1)
-

Step 1 — Battery



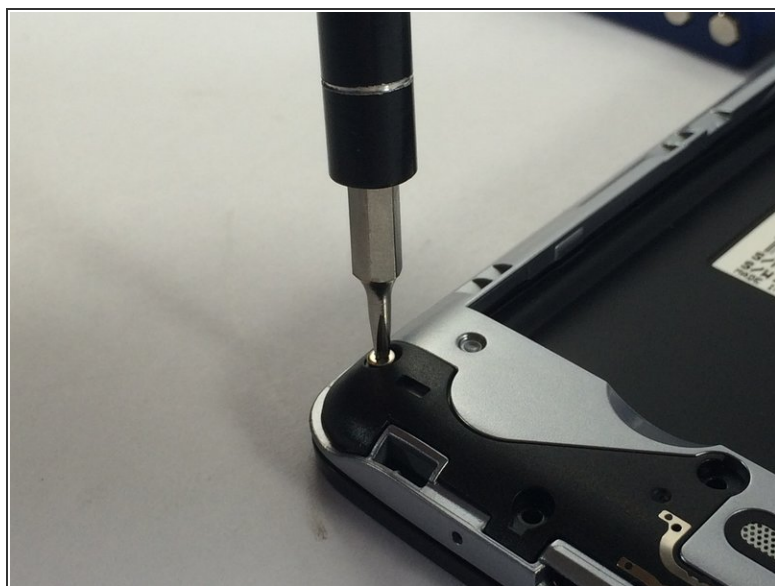
- Carefully slide an opening pick between the the rear cover and the body of the phone.
- Using the pick, separate the cover from the back of the phone.
- Remove the rear cover.

Step 2



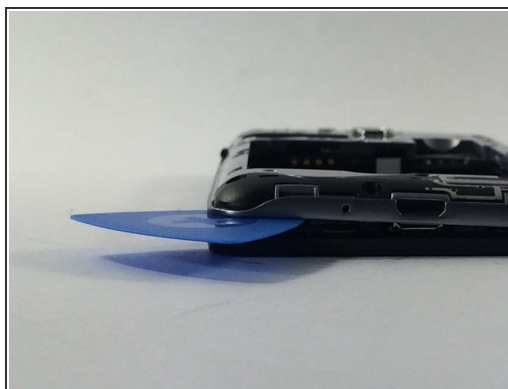
- Insert a plastic opening tool into the small recess at the bottom of the battery.
- Use the plastic opening tool to lift up the bottom of the battery.
- Remove the battery from the phone.

Step 3 — Motherboard



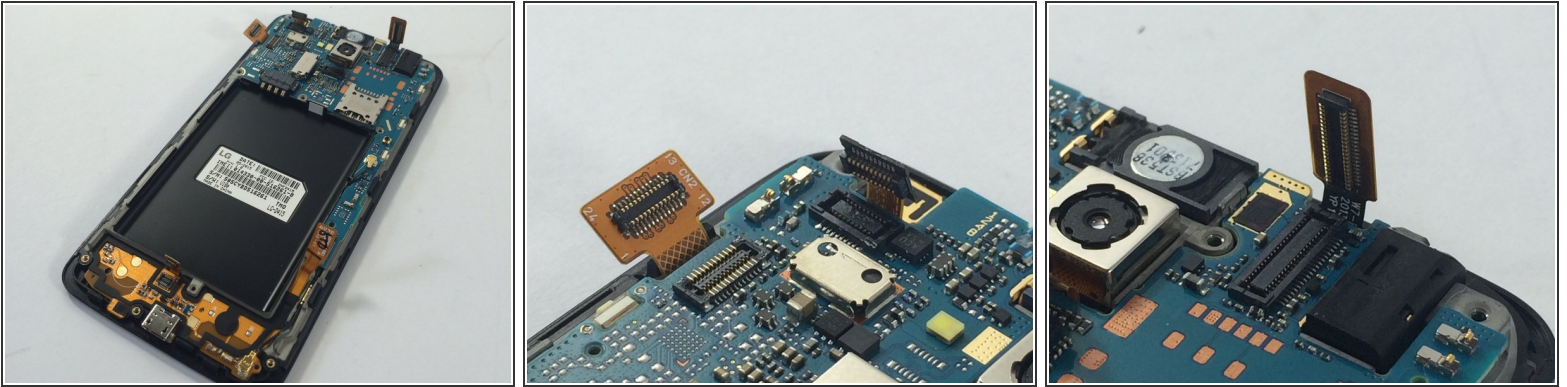
- Remove the eleven JIS #000 screws securing the midframe to the phone.

Step 4



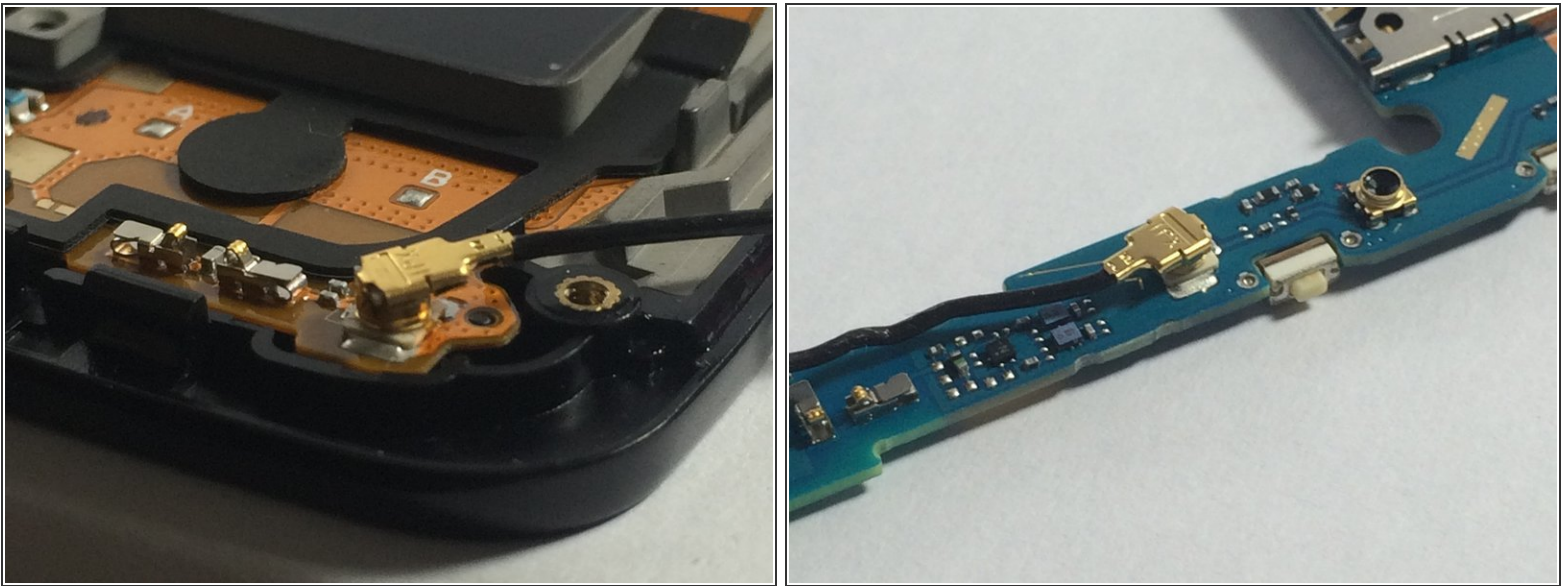
- Using an opening pick, carefully separate the midframe from the motherboard.

Step 5



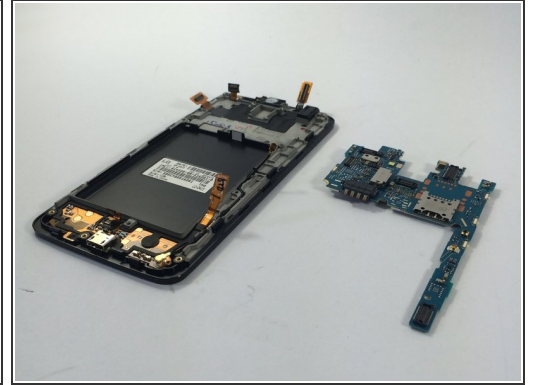
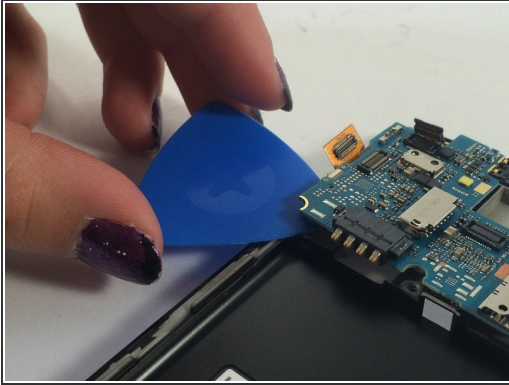
- Disconnect the flex cables (gold tags with prongs) from the motherboard.

Step 6



- Disconnect the thin black cable in the bottom-right corner of the phone.

Step 7



- Gently pry the motherboard away from the phone.

To reassemble your device, follow these instructions in reverse order.