



LG Optimus T Screen Replacement

You may need to replace your LG Optimus T's screen if it is unresponsive or badly damaged.

Written By: Edward Farris

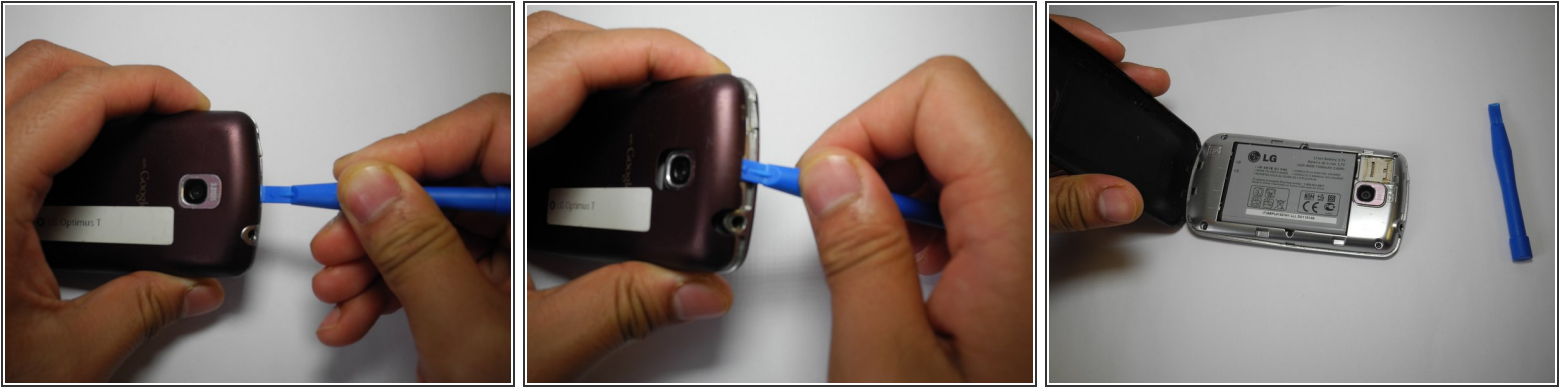





TOOLS:

- [Tweezers](#) (1)
- [JIS Driver Set](#) (1)
- [iFixit Opening Tools](#) (1)

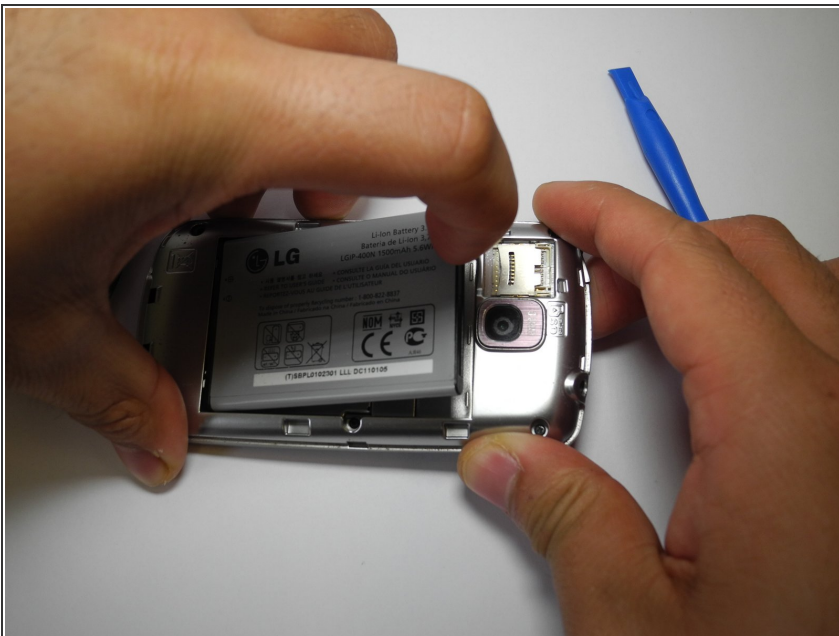
Step 1 — Screen



 Working on your device while it is turned on may result in electric shock. Make sure to shut down and unplug your device before you begin.

- Using the plastic opening tool to remove the phone's back cover. At the top of the phone, there's an indentation to put the tool into to pop the case off.

Step 2




- Remove the battery. There's an indentation to the left of the camera lens.

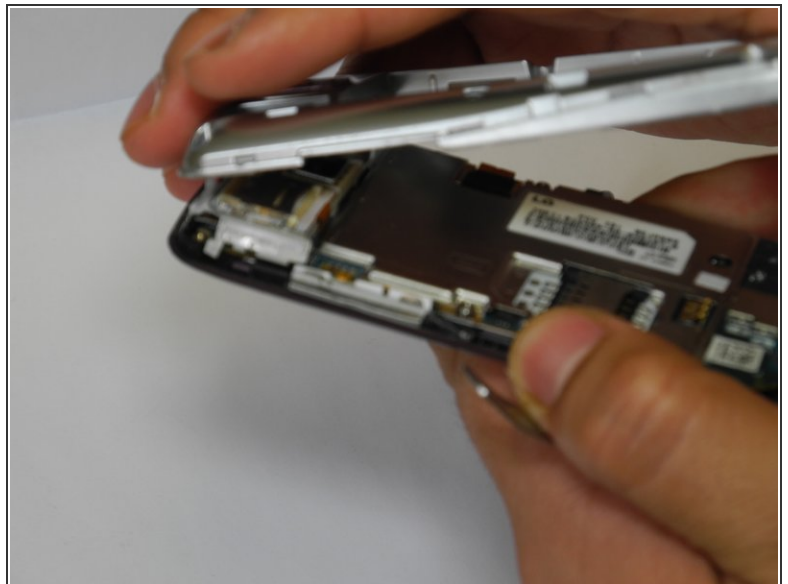
Step 3




- Remove the six (6), J0 Phillip's head, 4.5mm screws.

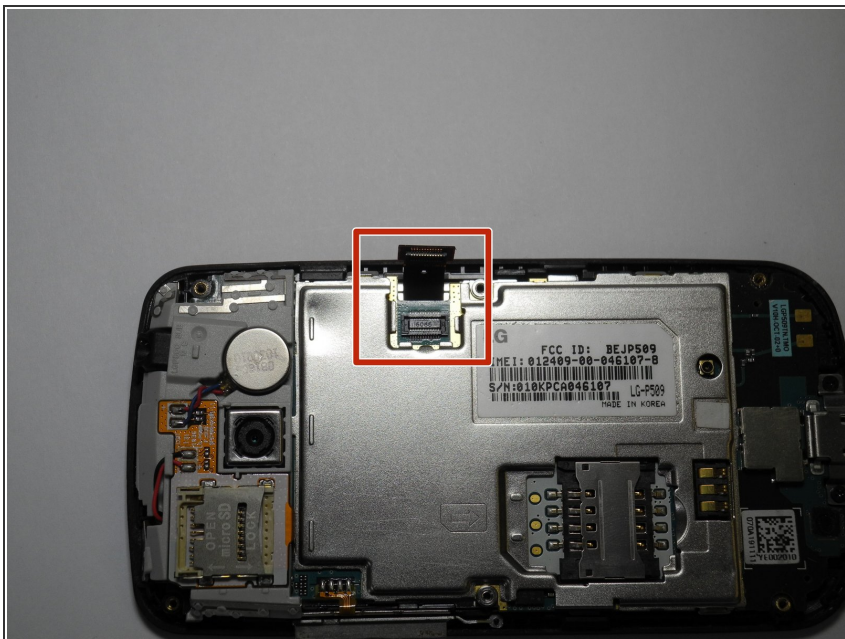
 Be sure to retain all screws for reassembly.

Step 4



- Remove interior case. There are indentations on the top and bottom of the phone. Using a spudger, remove the interior case.
-  You might have difficulty popping the interior case off, and a more durable prying device may be needed.

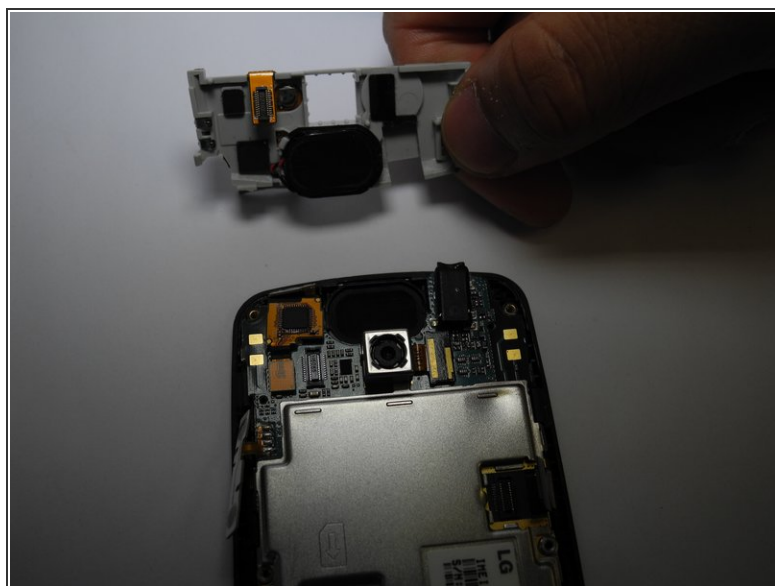
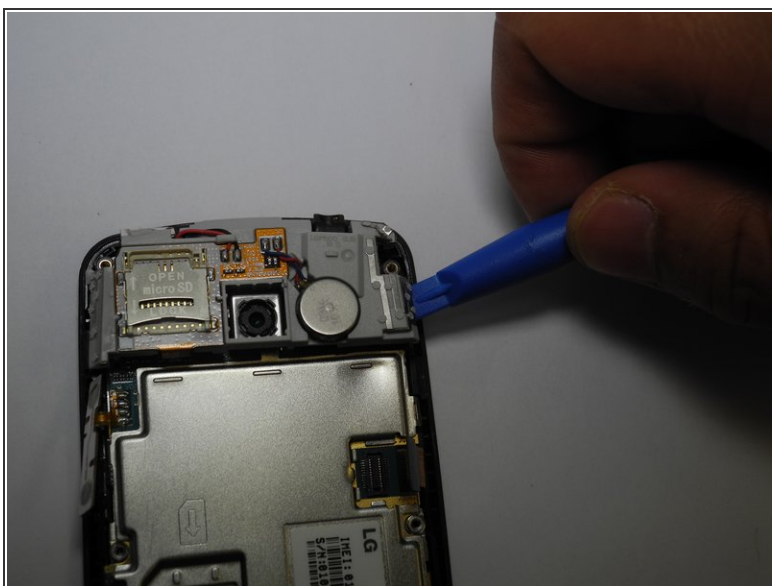
Step 5



- Pull up connector tab

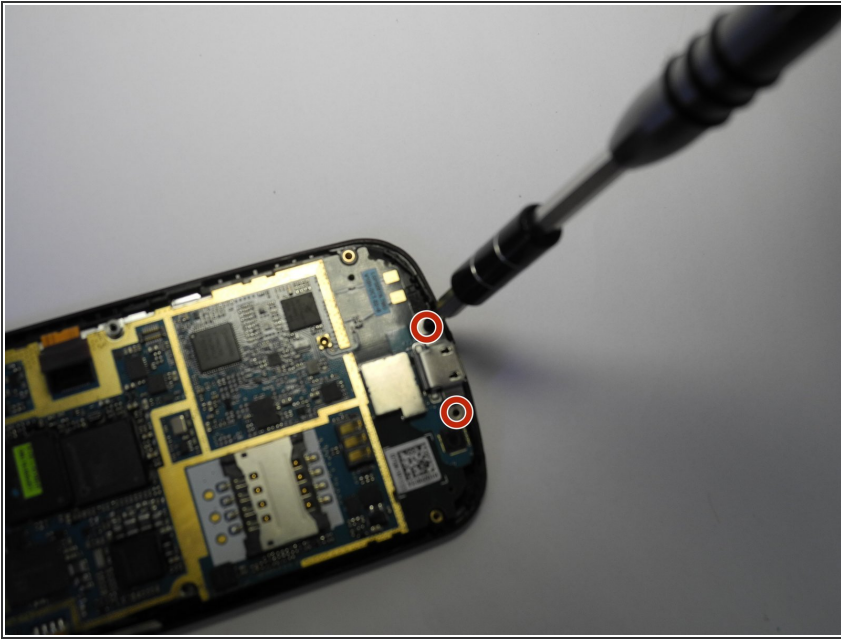
ⓘ Connector tabs may be difficult to remove, and tweezers may be required to assist removal.

Step 6



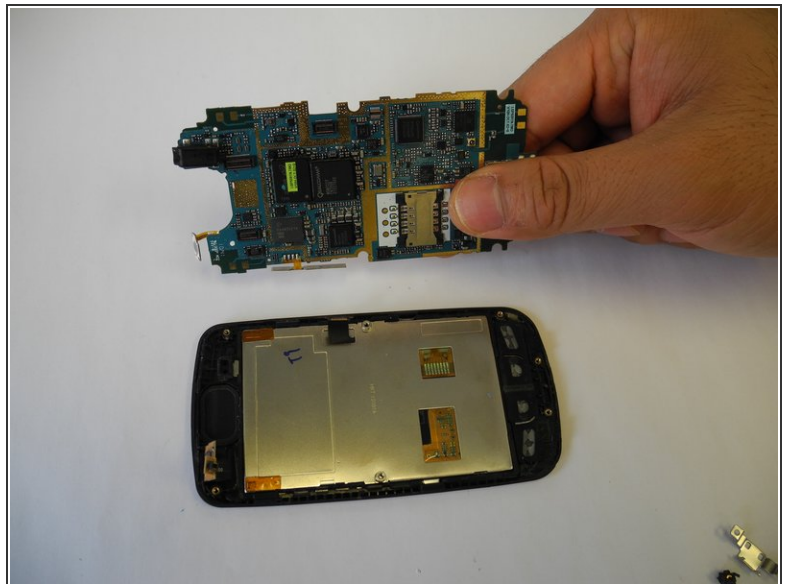
- Remove SD card mount. Use a plastic opening tool to assist removal.

Step 7



- Use a J0 screwdriver to remove two 1.8mm screws from the charging port.
- ⓘ Charging port and motherboard are connected.
- ★ Be sure to retain all screws for reassembly.

Step 8



- Remove connector tab. Then remove the motherboard.
- ⓘ Connector tabs may be difficult to remove, and tweezers may be required to assist removal.

Step 9



- Using a spudger, gently pry off the metal panel on the back of the screen attached by 4 retaining points.
- Remove the screen from the front of your device.

To reassemble your device, follow these instructions in reverse order.