



# LG Phoenix 2 Power and volume buttons Replacement

Use this guide to replace the power and volume buttons in your LG Phoenix 2.

Written By: Esteban Ruibal



# INTRODUCTION

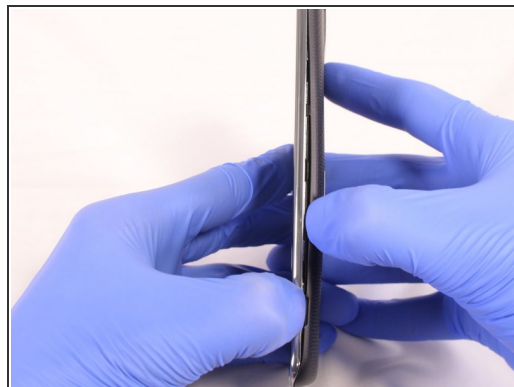
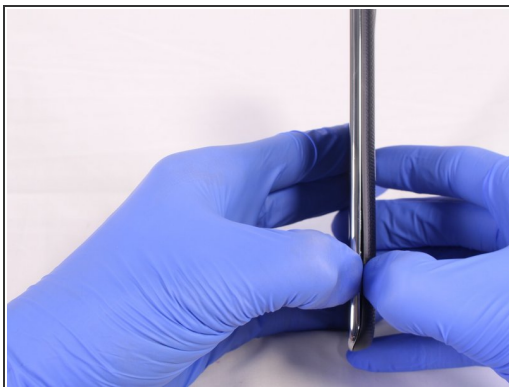
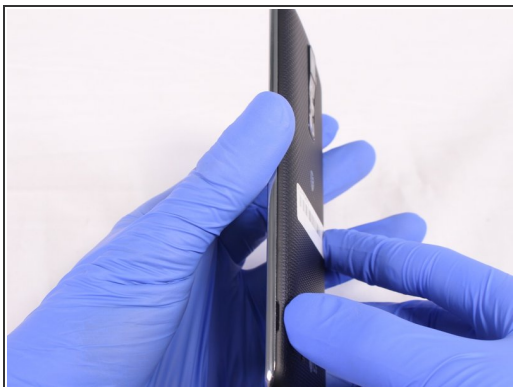
This guide will walk you through the process of replacing the power and volume buttons in an LG Phoenix 2. This guide could be used when the buttons do not respond them being pressed. This guide may also be used when the buttons get stuck.



## TOOLS:

- [Magnetic Project Mat](#) (1)
  - [Phillips #00 Screwdriver](#) (1)
  - [iFixit Opening Tools](#) (1)
  - [Spudger](#) (1)
  - [Metal Spudger Set](#) (1)
-

## Step 1 — Battery



- Place a fingernail in the notch at the bottom edge of the phone.
- Pull on the back cover with one hand while keeping the rest of the phone steady, and run your fingernail along the edge.

## Step 2



- Place a fingernail in the notch at the bottom edge of the battery.
- Pull the battery out.

### Step 3 — Power and volume buttons



- Locate the SIM card in the top right corner on the back of the phone.
- Remove the SIM card by pushing it with your thumb from left to right.

### Step 4



- Remove all 9 screws on the back by using a Phillips head #J00 screwdriver.
- To remove the screws rotate them counterclockwise.

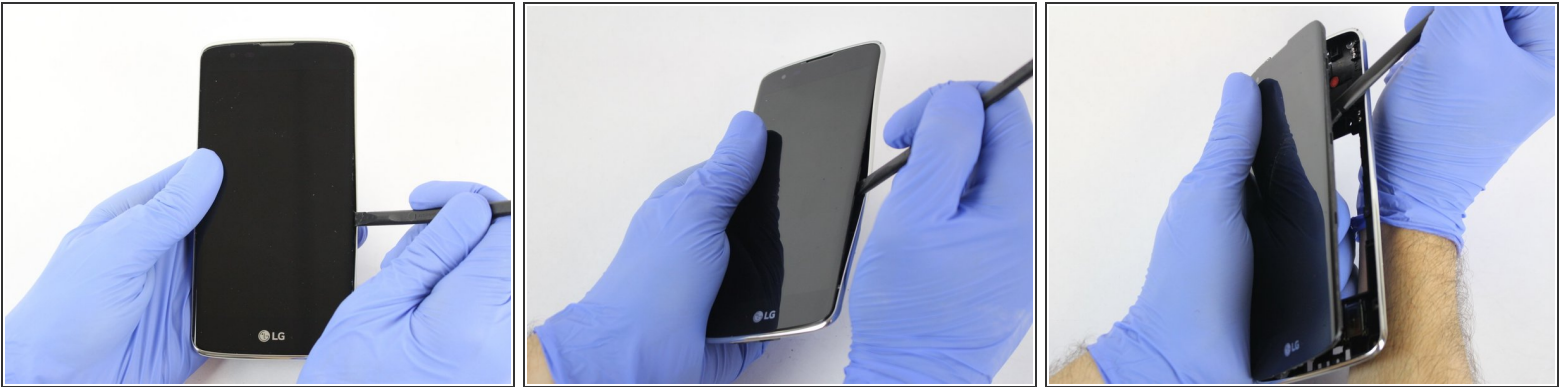


## Step 5



- Insert a plastic opening tool in the split at the bottom of the phone (between the bottom shield and the rest of the phone).
- Pry the bottom shield to separate it from the phone.
- Once it is loose you should be able to remove it with your hand.

## Step 6



- Insert the flat end of the Spudger between the screen and the chromed frame.
- Once inserted, run the Spudger along the frame to separate the front part of the phone from the back shield.

## Step 7



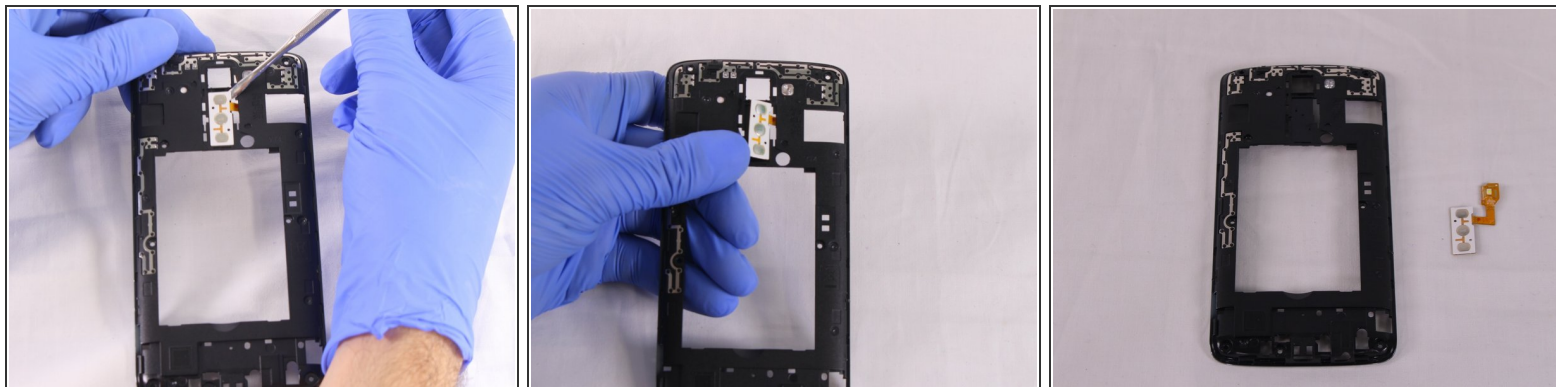
- The buttons are attached with adhesive to both sides of the back shield. To separate the orange cables insert a metallic Spudger underneath and gently pull up.
- Once the orange part is loose move to the next step.

## Step 8



- Remove the buttons frame on the back side the shield, by inserting a plastic opening tool underneath the frame.

## Step 9



- The buttons are attached with adhesive. To separate them from the shield insert a metallic Spudger underneath and gently pull up.
- Once the part is loose you should be able to pass the backside orange cables through the hole.

To reassemble your device, follow these instructions in reverse order.