



# LG Phoenix 2 Speaker Replacement

Use this guide to replace the speaker in your LG Phoenix 2.

Written By: Esteban Ruibal



---

## INTRODUCTION

This guide will walk you through the process of replacing a speaker in an LG Phoenix 2. A speaker replacement may be needed if no sound comes out of the speaker.

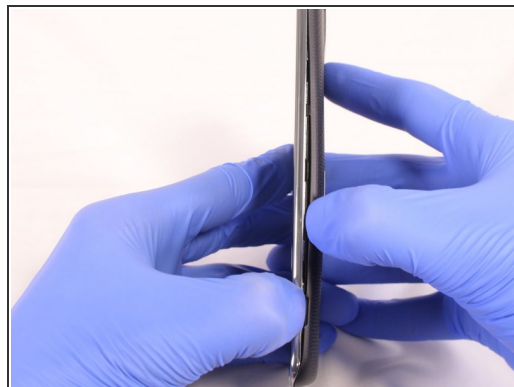
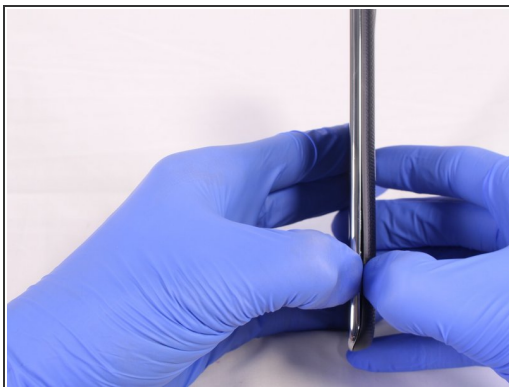
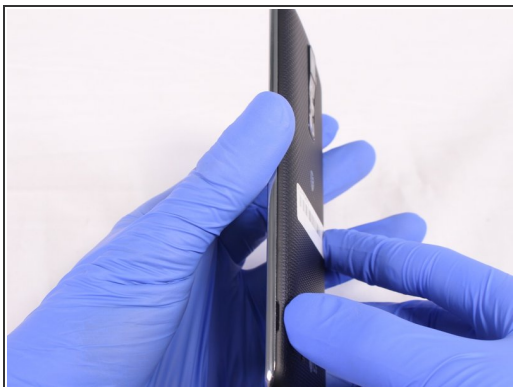
The speaker model used in this phone is a KRP621 W1P speaker.

---

### TOOLS:

- [Magnetic Project Mat](#) (1)
  - [Phillips #00 Screwdriver](#) (1)
  - [iFixit Opening Tools](#) (1)
  - [Spudger](#) (1)
-

## Step 1 — Battery



- Place a fingernail in the notch at the bottom edge of the phone.
- Pull on the back cover with one hand while keeping the rest of the phone steady, and run your fingernail along the edge.

## Step 2



- Place a fingernail in the notch at the bottom edge of the battery.
- Pull the battery out.

## Step 3 — Speaker



- Locate the SIM card in the top right corner on the back of the phone.
- Remove the SIM card by pushing it with your thumb from left to right.

## Step 4



- Remove all 9 screws on the back by using a Phillips head #J00 screwdriver.
- To remove the screws rotate them counterclockwise.

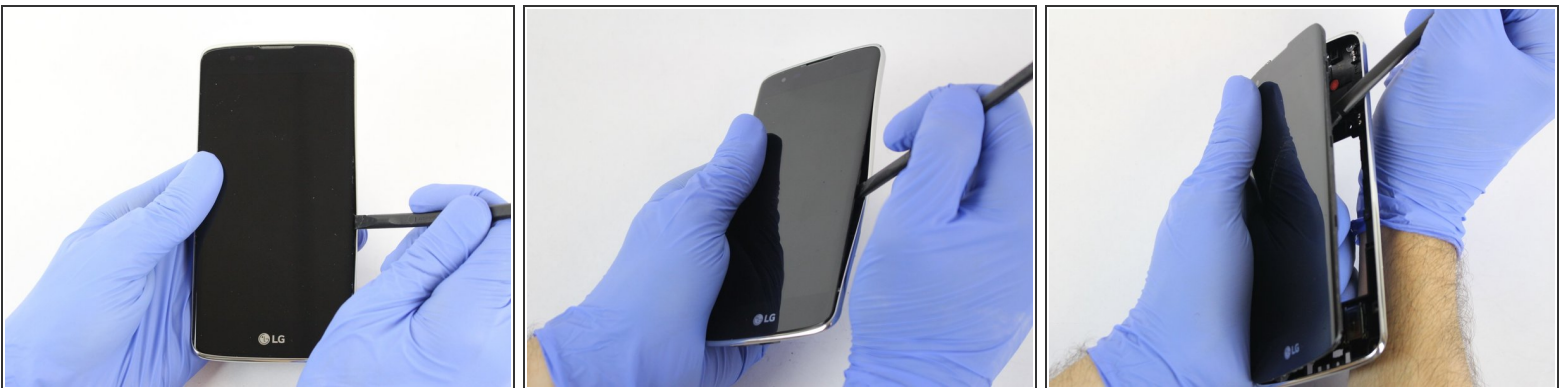


## Step 5



- Insert a plastic opening tool in the split at the bottom of the phone (between the bottom shield and the rest of the phone).
- Pry the bottom shield to separate it from the phone.
- Once it is loose you should be able to remove it with your hand.

## Step 6



- Insert the flat end of the Spudger between the screen and the chromed frame.
- Once inserted, run the Spudger along the frame to separate the front part of the phone from the back shield.

## Step 7



- Remove the speaker by using the Spudger.

To reassemble your device, follow these instructions in reverse order.