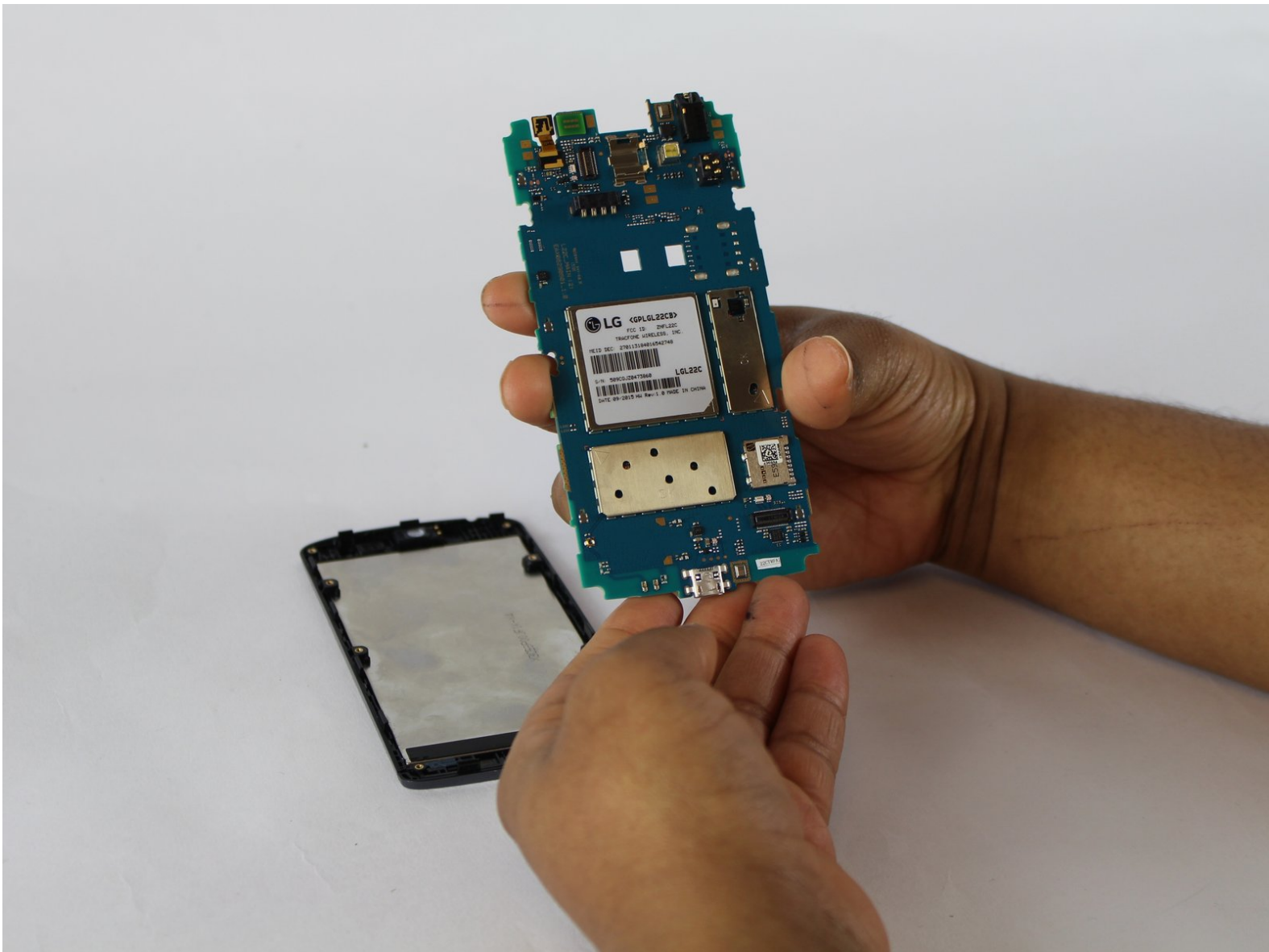




LG Power Motherboard Replacement

The motherboard is a circuit board behind the mid panel that connects and contains the phone's components.

Written By: Nadia Wilson



INTRODUCTION

This guide is made to help remove the motherboard from your phone if you are having problems with it or need to replace it. The only real hazard involving this step is removing the back and mid plating of your phone.



TOOLS:

- [iFixit Opening Tools](#) (1)
 - [Phillips #000 Screwdriver](#) (1)
 - [Screwdriver](#) (1)
-

Step 1 — Battery



- Slide a plastic spudger, or guitar pick, between the back and front panel at the bottom .

⚠ A metal spudger can easily damage your device. A plastic opening tool is always the only option.

Step 2



- Carefully pop the back panel off and place it to the side.

Step 3



- Use the thumb tab to remove the battery.

Step 4 — Motherboard



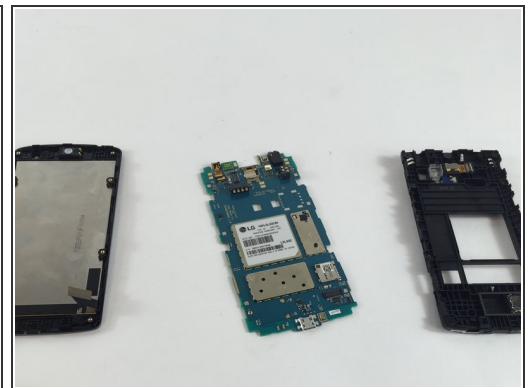
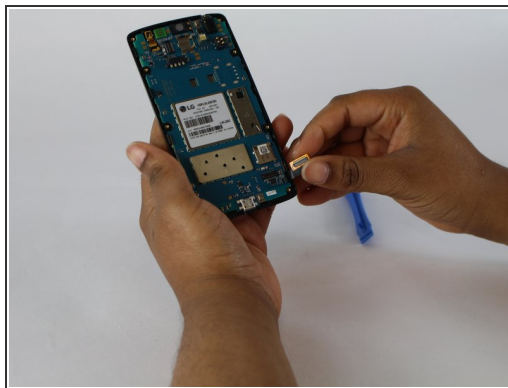
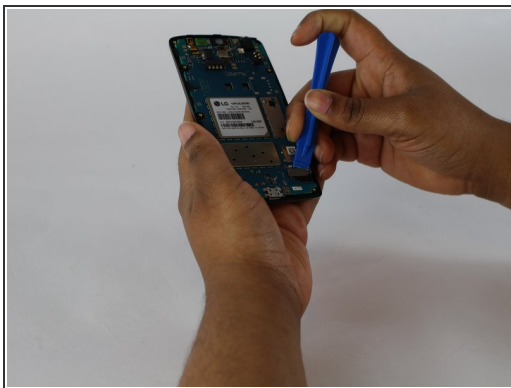
- Remove the eight 4mm screws along the side of the mid panel using the Phillips #000 screwdriver head.

Step 5



- Slide a plastic opening tool between the mid and front panel to remove the middle panel.
- Place the mid panel to the side.

Step 6



- Detach the motherboard and touchscreen from each other by using a plastic opening tool.
- The motherboard will then be free from the phone.

To reassemble your device, follow these instructions in reverse order.