



LG Prime GS390 Teardown

Written By: Jackie





TOOLS:

- [Phillips #00 Screwdriver](#) (1)
 - [Tweezers](#) (1)
-

Step 1 — LG Prime GS390 Teardown



- Remove the plastic shell that covers the back of the phone by applying pressure with two fingers in a downward sliding motion.

Step 2



- Remove the four black screws securing the corners of the phone using a small Phillips screwdriver.

Step 3



- At this point, you should be able to easily pull off the small console at the base of the phone, below the screen, that contains the circular silver home button.

Step 4



- Remove the black, rectangular battery labeled LG Li-Ion Battery (3.7V) by lightly applying pressure to the center. The battery should pop out.

Step 5



- Next, extract the orange and white plastic SIM card from the back of the phone by using a finger to slide it out from underneath the thin metal bar that holds it in place.

Step 6



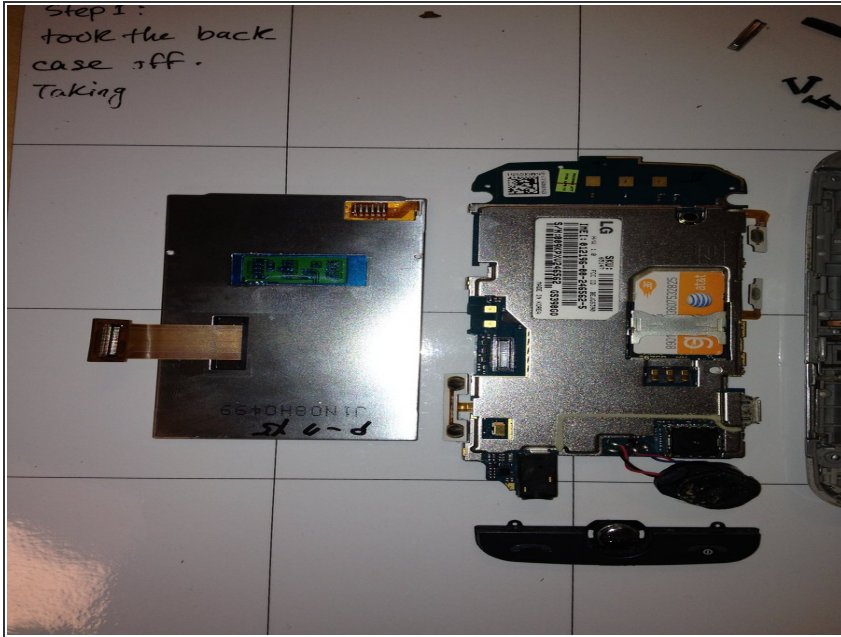
- Detach the printed wiring circuit board by gently pulling it away from the back cover. Because the screws have already been removed, the circuit board should come apart easily; it is now attached to the back cover by two thin red and black wires. Two blue and pink colored wires connect the circuit board to a small circular capacitor.

Step 7



- Use a pair of thin tweezers to carefully pry the rectangular display plate from the front casing. Slide one of the sharp ends of the tweezers between the display plate and the plastic case and lightly apply pressure until the plate pops out. The display plate will still be attached to the circuit board by a single strip of orange wire tape.

Step 8



- Separate the display plate from the circuit board by pulling on the orange wire tape that connects the black rectangle at the edge of the wire tape to the circuit board.

To reassemble your device, follow these instructions in reverse order.