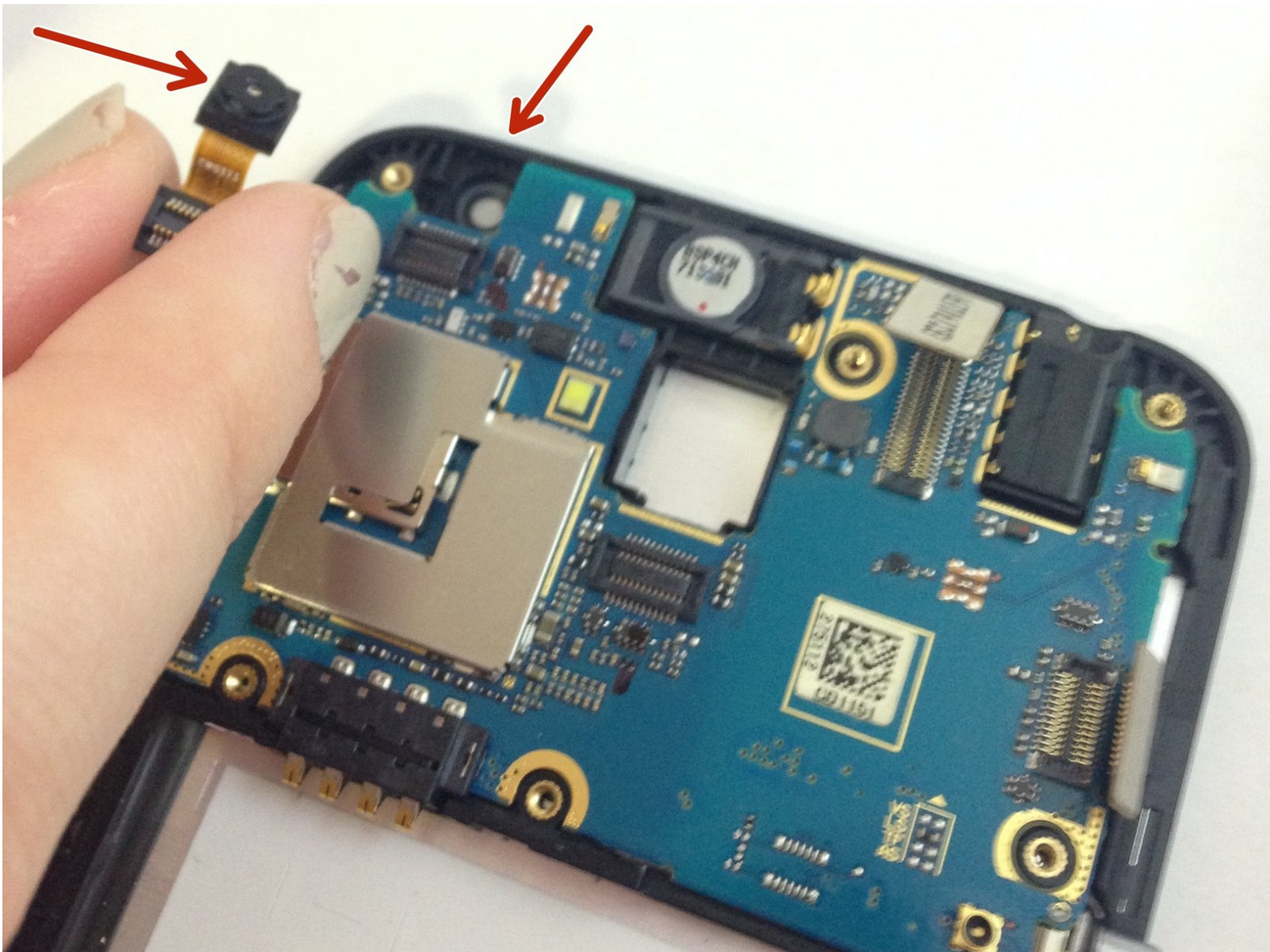




LG Realm Front Facing Camera Replacement

This guide will show you how to replace the front facing camera.

Written By: Ryan St Martin



INTRODUCTION

Before continuing, make sure the device is powered down. Also make sure that the battery and back casing are removed.



TOOLS:

- [Phillips #000 Screwdriver](#) (1)
 - [iFixit Opening Tools](#) (1)
-

Step 1 — Battery



- To remove the back, insert thumbnail into MicroUSB port, and pull up to loosen back.
- Use nail to loosen case on all four sides. Once loose, remove back case.

Step 2



- Insert thumbnail into tab below battery.
- Pull away from phone and remove.

Step 3 — Plastic Midframe



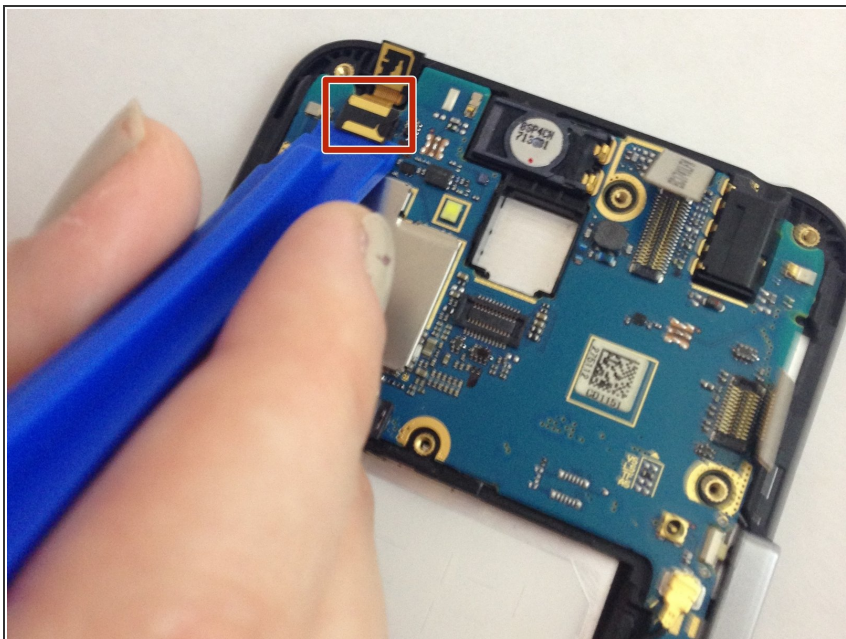
- Once the back cover and battery are removed, use the Phillips #J000 screwdriver to remove all 11 screws located around the plastic midframe.

Step 4



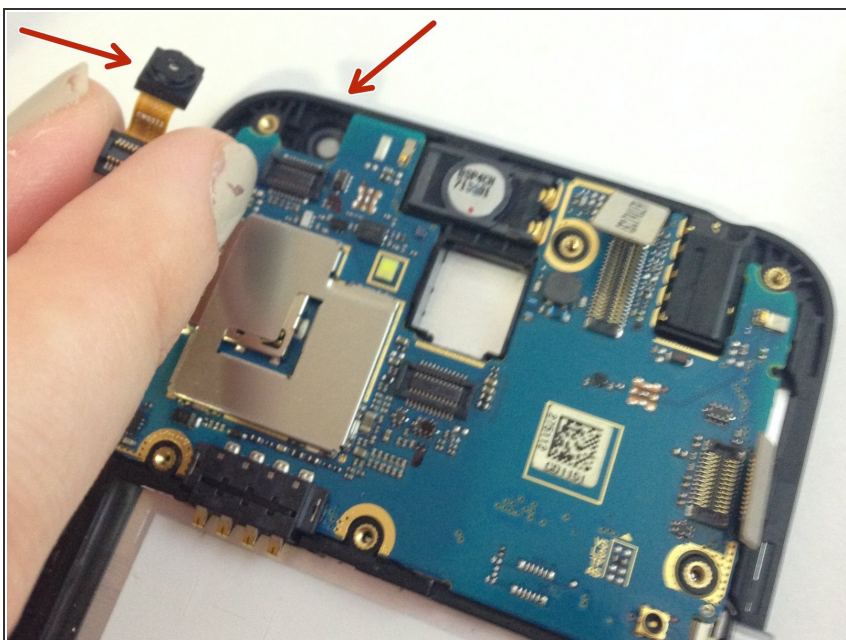
- Using the plastic opening tool, carefully pry and separate the plastic midframe from the rest of the phone.

Step 5 — Front Facing Camera



- Locate the front facing camera in the top left hand corner of the motherboard. Using the plastic opening tool, separate the ribbon cable from the phone.

Step 6



- After removing this ribbon cable, you will be able to easily remove the front facing camera with your fingers.

To reassemble your device, follow these instructions in reverse order.