



# LG Realm Motherboard Replacement

This guide will show you how to replace your motherboard.

Written By: Ryan St Martin



---

## INTRODUCTION

Before continuing, make sure the device is powered down. Also make sure that the battery and back casing are removed.

---

### TOOLS:

- [64 Bit Driver Kit](#) (1)
  - [iFixit Opening Tools](#) (1)
-

## Step 1 — Battery



- To remove the back, insert thumbnail into MicroUSB port, and pull up to loosen back.
- Use nail to loosen case on all four sides. Once loose, remove back case.

## Step 2



- Insert thumbnail into tab below battery.
- Pull away from phone and remove.



## Step 3 — Plastic Midframe



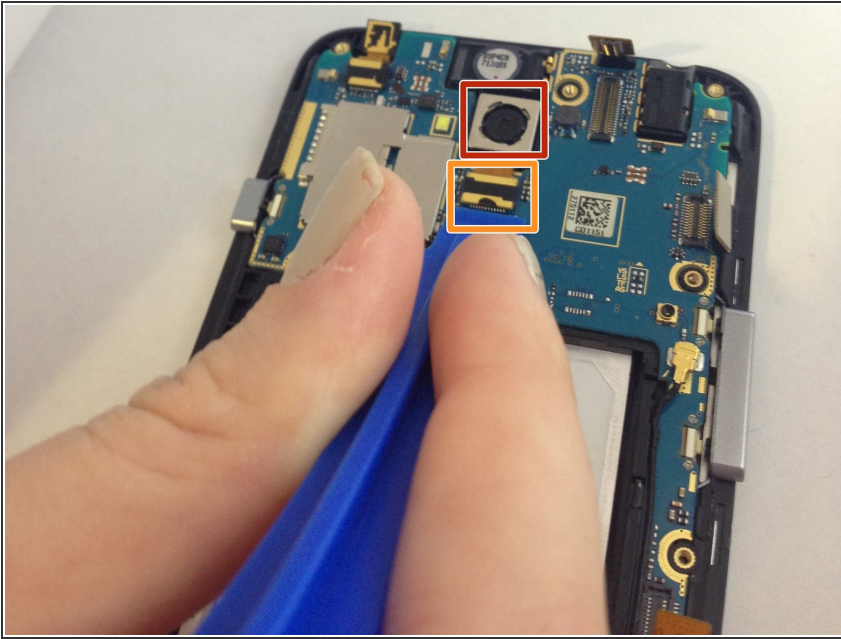
- Once the back cover and battery are removed, use the Phillips #J000 screwdriver to remove all 11 screws located around the plastic midframe.

## Step 4



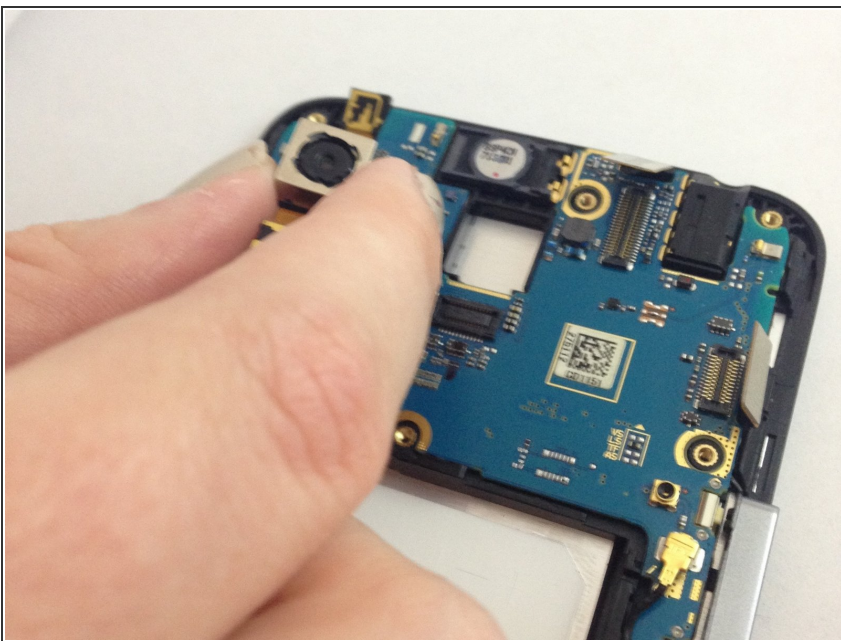
- Using the plastic opening tool, carefully pry and separate the plastic midframe from the rest of the phone.

## Step 5 — Rear Facing Camera



- Locate the rear facing camera.
- Using the plastic opening tool, pry apart the cable from where it connects to the phone.

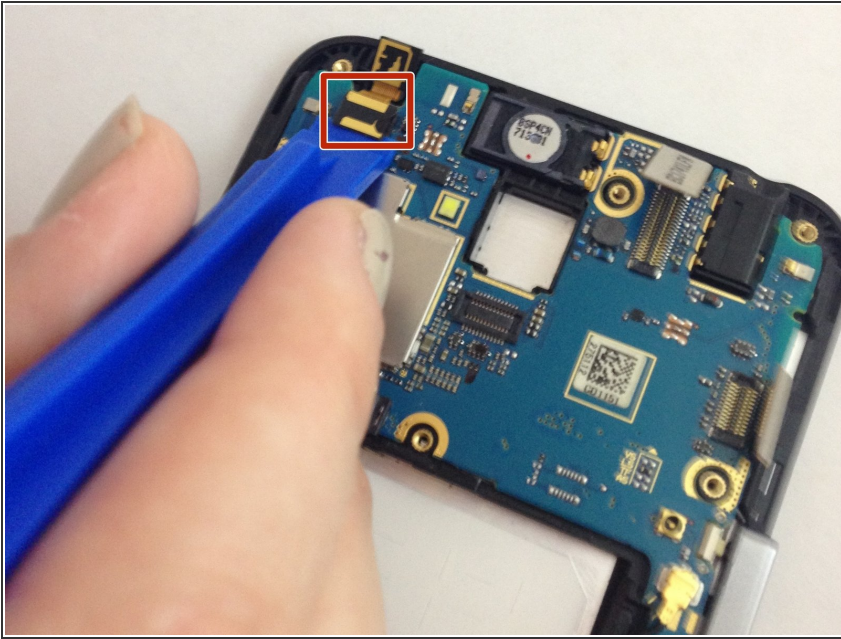
## Step 6



- After removing the ribbon cable, the camera should be easy to remove with your fingers. Remove the rear facing camera.

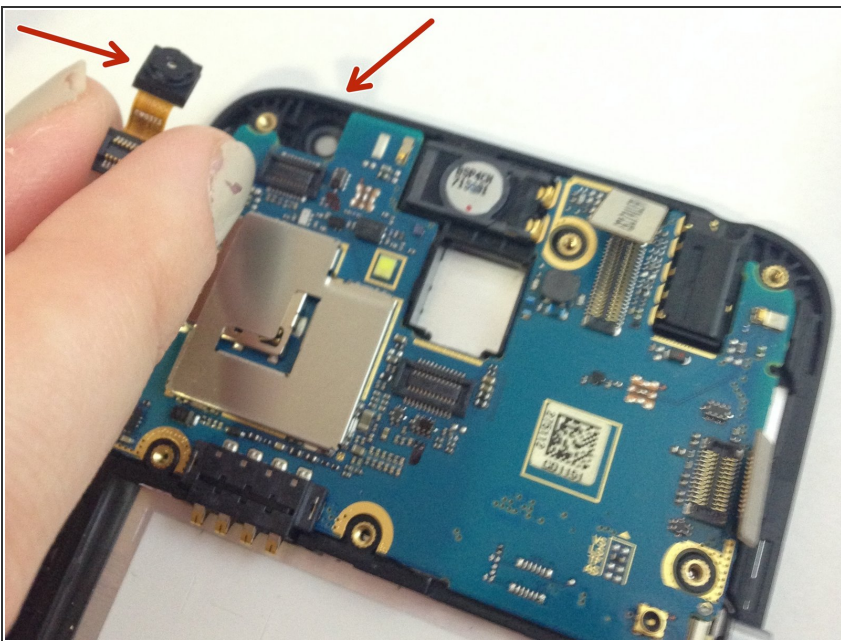


## Step 7 — Front Facing Camera



- Locate the front facing camera in the top left hand corner of the motherboard. Using the plastic opening tool, separate the ribbon cable from the phone.

## Step 8



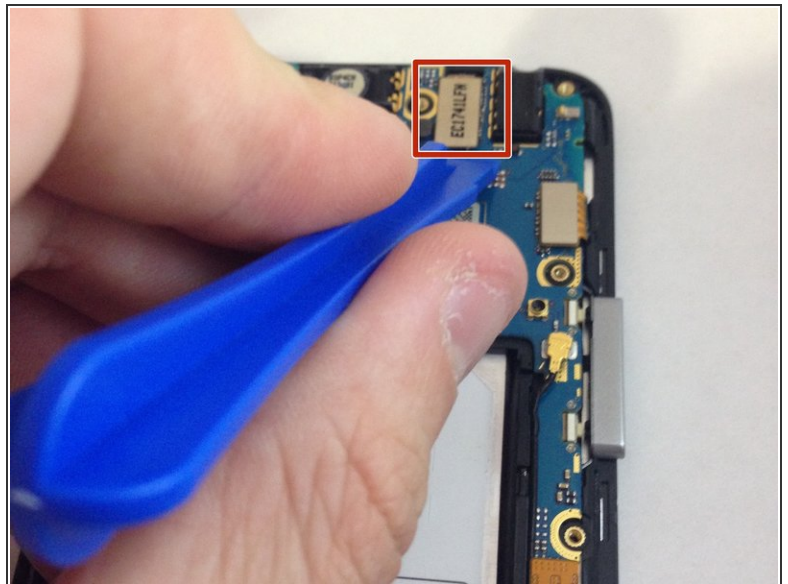
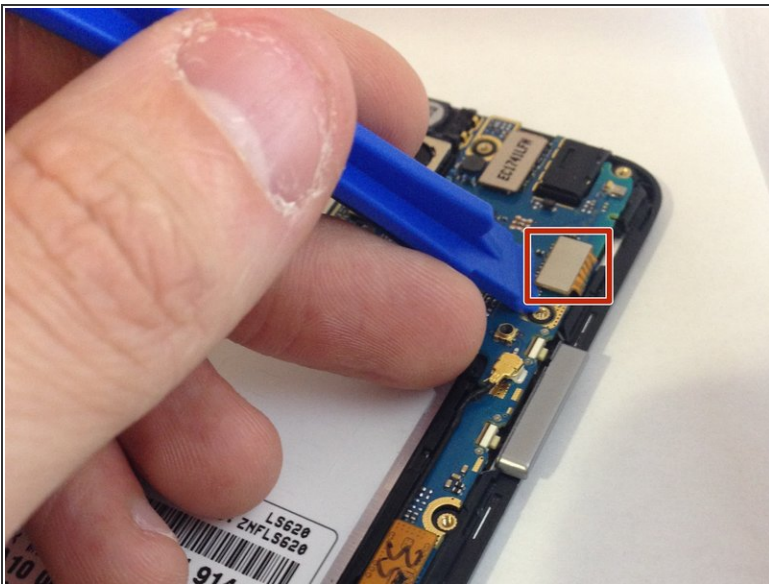
- After removing this ribbon cable, you will be able to easily remove the front facing camera with your fingers.

## Step 9 — Motherboard



- Locate where the motherboard connects to the orange sisterboard. Using the plastic opening tool, disconnect the connection between the phone and the orange ribbon cable.

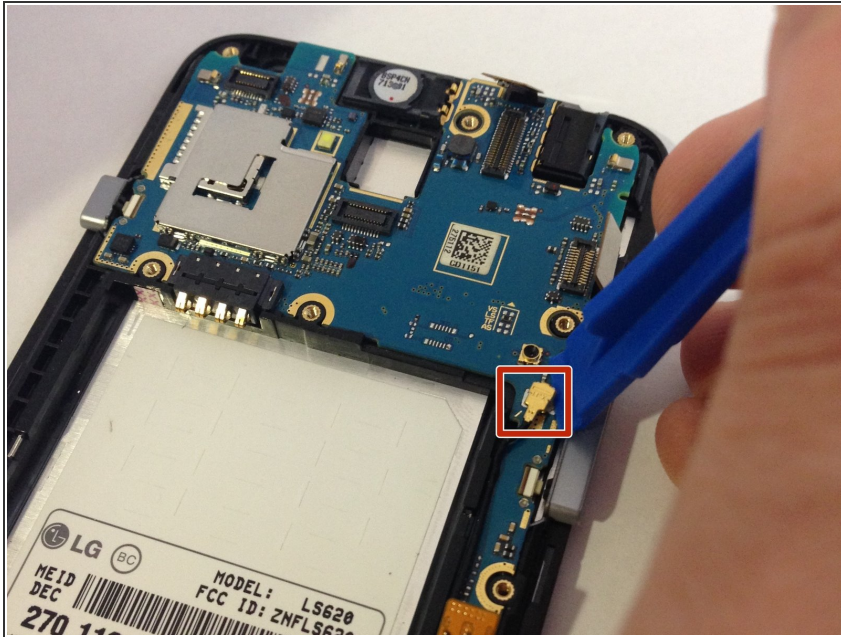
## Step 10



- Locate the ribbon cables in the top right corner of the motherboard. Using the plastic opening tool, remove the ribbon cables from phone.

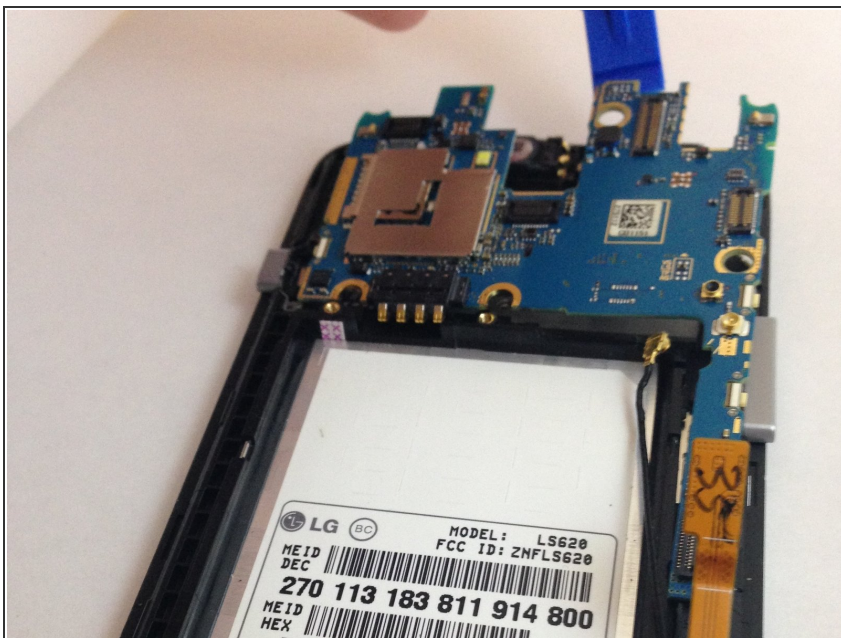


## Step 11



- Using the plastic opening tool, disconnect the ribbon cable that connects the antenna to the motherboard.

## Step 12



- Using the plastic opening tool, carefully remove the motherboard from the phone.

To reassemble your device, follow these instructions in reverse order.