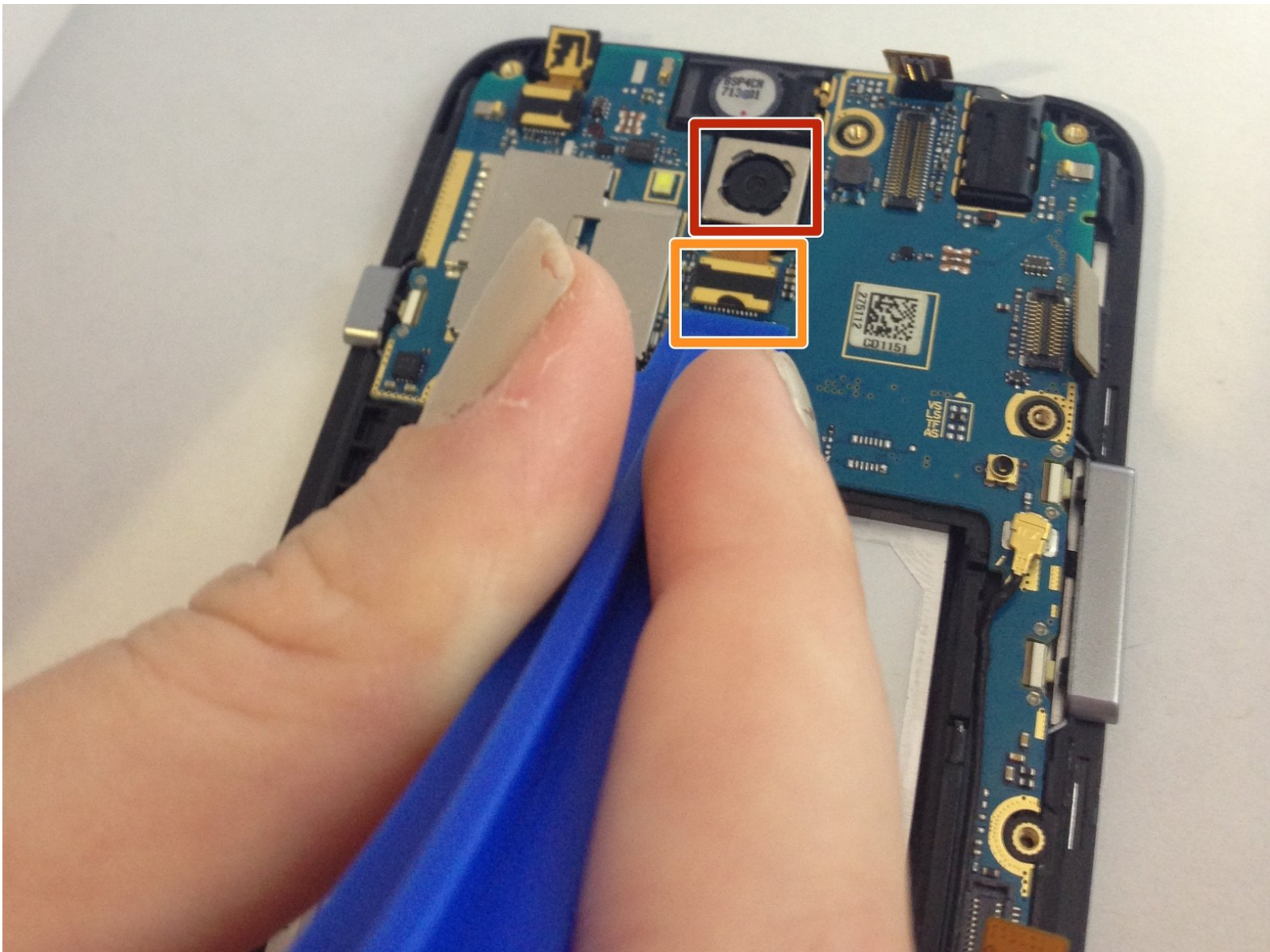




# LG Realm Rear Facing Camera Replacement

This guide will help users remove the rear facing camera.

Written By: Emily Palmer



---

## INTRODUCTION

Before continuing, make sure the device is powered down. Also make sure that the battery and back casing are removed.



### TOOLS:

- [iFixit Opening Tools](#) (1)
  - [64 Bit Driver Kit](#) (1)
-

## Step 1 — Battery



- To remove the back, insert thumbnail into MicroUSB port, and pull up to loosen back.
- Use nail to loosen case on all four sides. Once loose, remove back case.

## Step 2



- Insert thumbnail into tab below battery.
- Pull away from phone and remove.

## Step 3 — Plastic Midframe



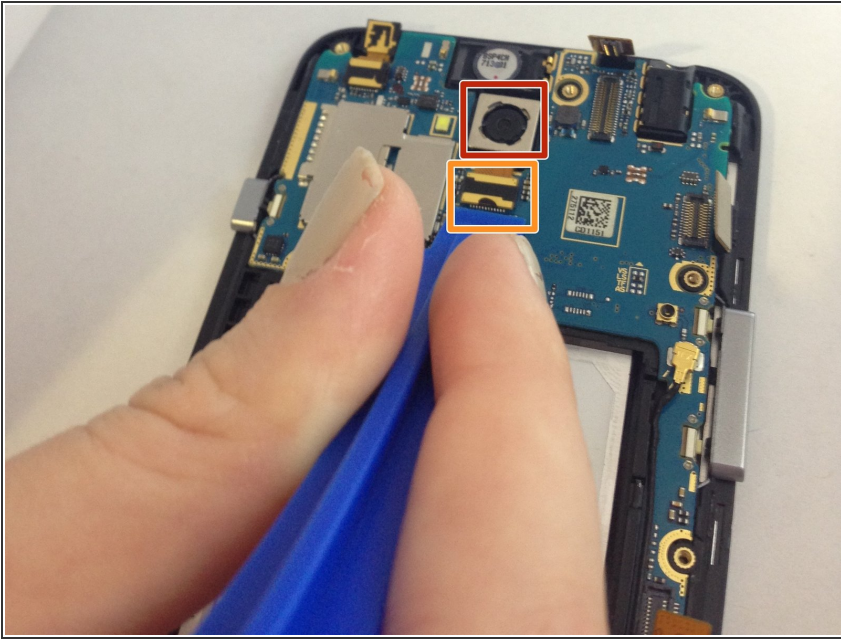
- Once the back cover and battery are removed, use the Phillips #J000 screwdriver to remove all 11 screws located around the plastic midframe.

## Step 4



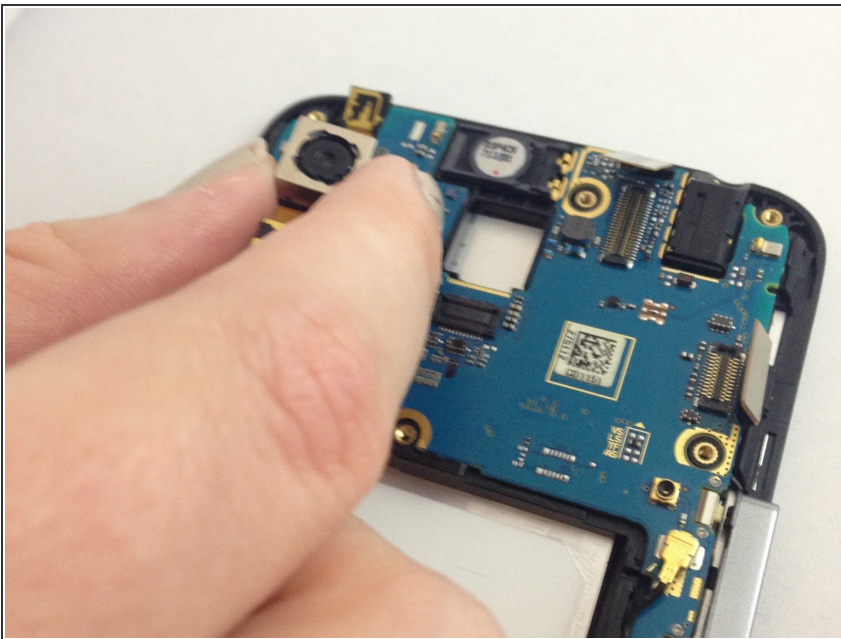
- Using the plastic opening tool, carefully pry and separate the plastic midframe from the rest of the phone.

## Step 5 — Rear Facing Camera



- Locate the rear facing camera.
- Using the plastic opening tool, pry apart the cable from where it connects to the phone.

## Step 6



- After removing the ribbon cable, the camera should be easy to remove with your fingers. Remove the rear facing camera.

To reassemble your device, follow these instructions in reverse order.