



LG Riso Front Camera Replacement

This guide will walk you through how to replace the front-facing camera for the LG Riso.

Written By: Amina



INTRODUCTION

If your LG Rizio front-facing camera is not functioning, use this guide to replace it.



TOOLS:

- [iFixit Opening Tools](#) (1)
 - [Phillips #0 Screwdriver](#) (1)
-

Step 1 — Back Panel



- Use a plastic opening tool to separate the back panel from the device.
- Remove the back panel.

Step 2 — Battery



- Place your thumb along the bottom of the battery and pry upwards to remove.

Step 3 — Midframe



- Press down on the SIM eject tab with a fingernail (or iFixit opening tool), and slide the SIM card out.

Step 4



- Remove the eight Phillips #0 screws from the internal support frame.

Step 5



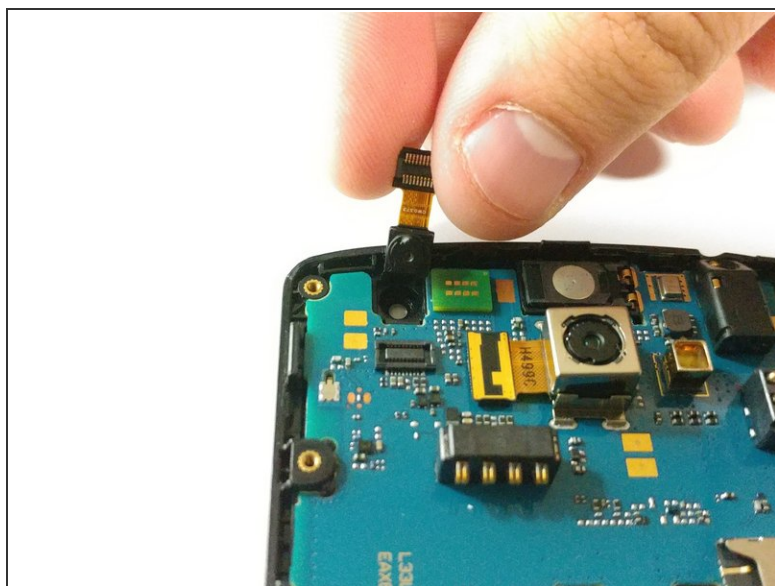
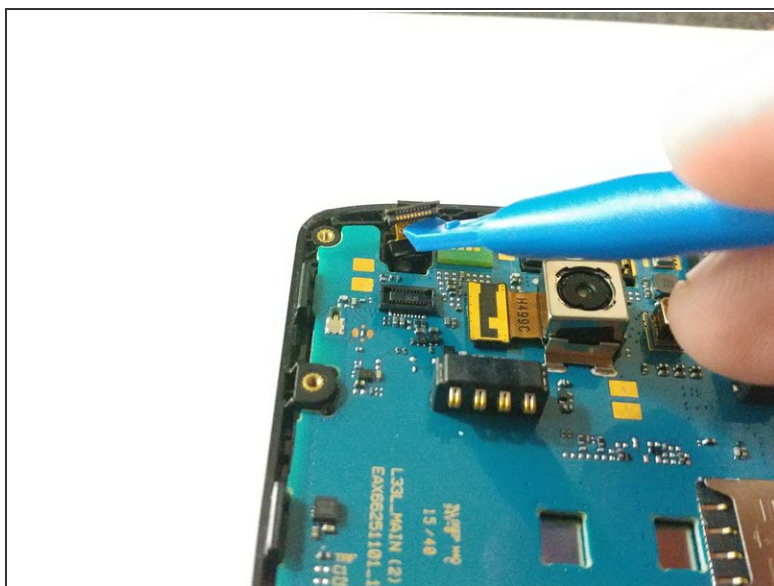
- Use an opening tool on the marked locations to lift the edges up. There should be a small click when lifting these edges up.

Step 6



- Using your hand, pick up the midframe to separate it from the phone.
- ⚠ If the midframe does not want to lift off, go back and repeat step 6.

Step 7 — Front-Facing Camera



- Unclip the front camera connector from the motherboard and lift it from the frame.

To reassemble your device, follow these instructions in reverse order.