



LG Risio Motherboard Replacement

This guide will walk you through on how to replace the motherboard on the LG Risio.

Written By: Erika Heppner



INTRODUCTION

If there are a lot of issues on the phone such as the blue screen, the screen not turning on, or the headphone jack not working properly, it may be the motherboard. Use this guide to replace the motherboard to fix the issues listed above.



TOOLS:

- [Phillips #0 Screwdriver](#) (1)
 - [iFixit Opening Tools](#) (1)
-

Step 1 — Back Panel



- Use a plastic opening tool to separate the back panel from the device.
- Remove the back panel.

Step 2 — Battery



- Place your thumb along the bottom of the battery and pry upwards to remove.

Step 3 — Midframe



- Press down on the SIM eject tab with a fingernail (or iFixit opening tool), and slide the SIM card out.

Step 4



- Remove the eight Phillips #0 screws from the internal support frame.

Step 5



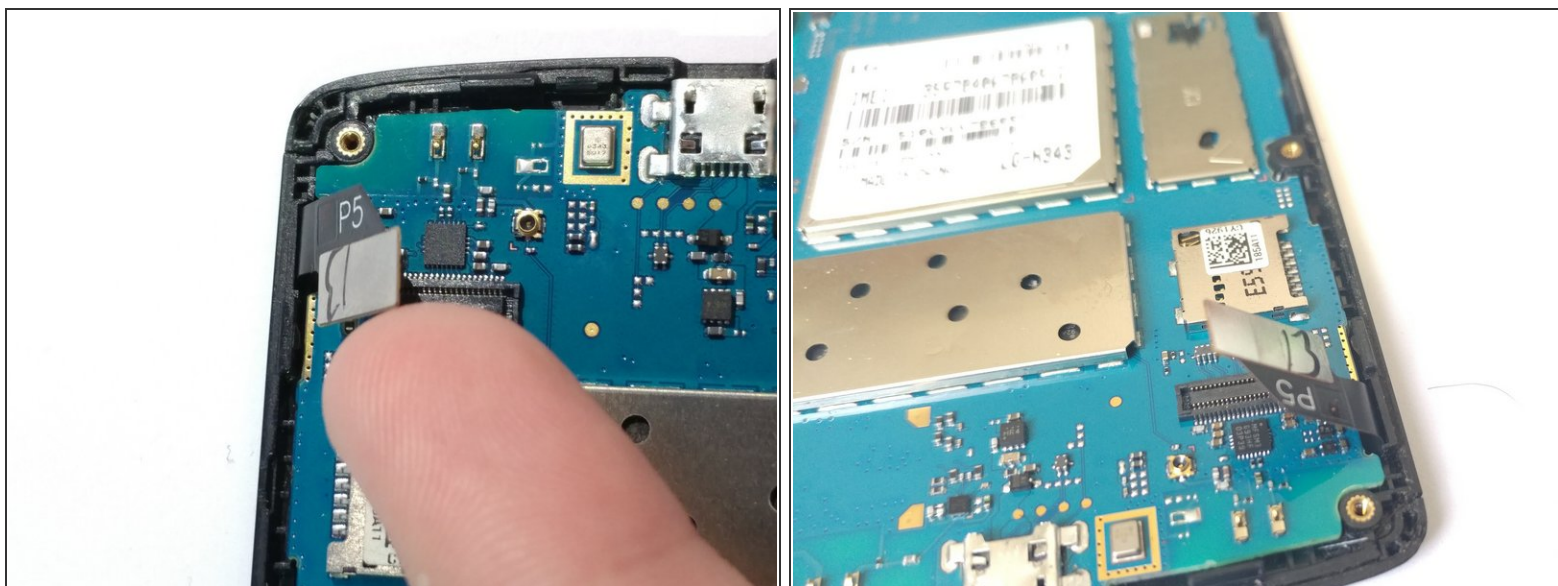
- Use an opening tool on the marked locations to lift the edges up. There should be a small click when lifting these edges up.

Step 6



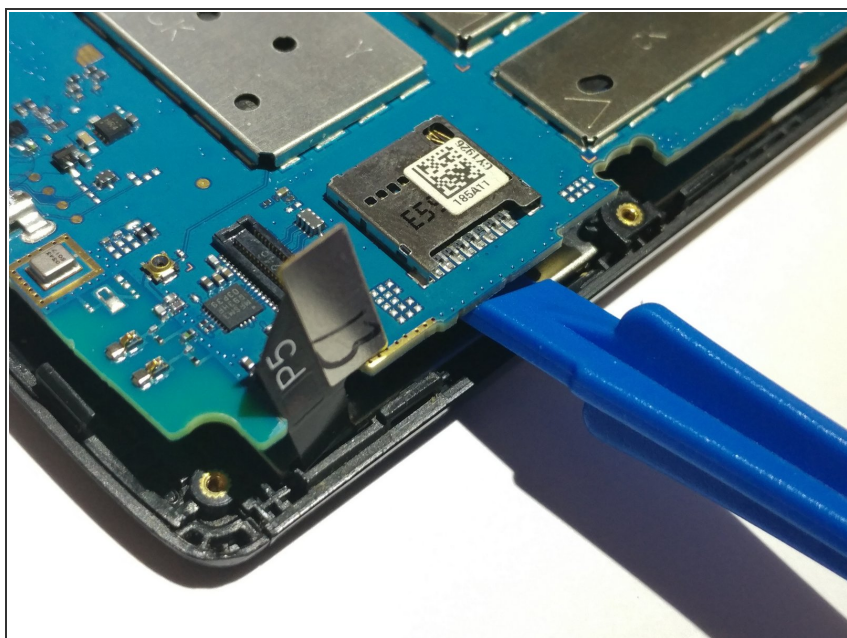
- Using your hand, pick up the midframe to separate it from the phone.
- ⚠ If the midframe does not want to lift off, go back and repeat step 6.

Step 7 — Motherboard



- Detach the screen connector from the motherboard by putting your thumb underneath it and lifting up.
- ⓘ The screen connector is the part that has P5 written on it.

Step 8



- On the side with the screen connector, pull the two tabs away from the device.
- Use the plastic opening tool to lift the motherboard starting on the bottom right corner and pulling upwards.

To reassemble your device, follow these instructions in reverse order.