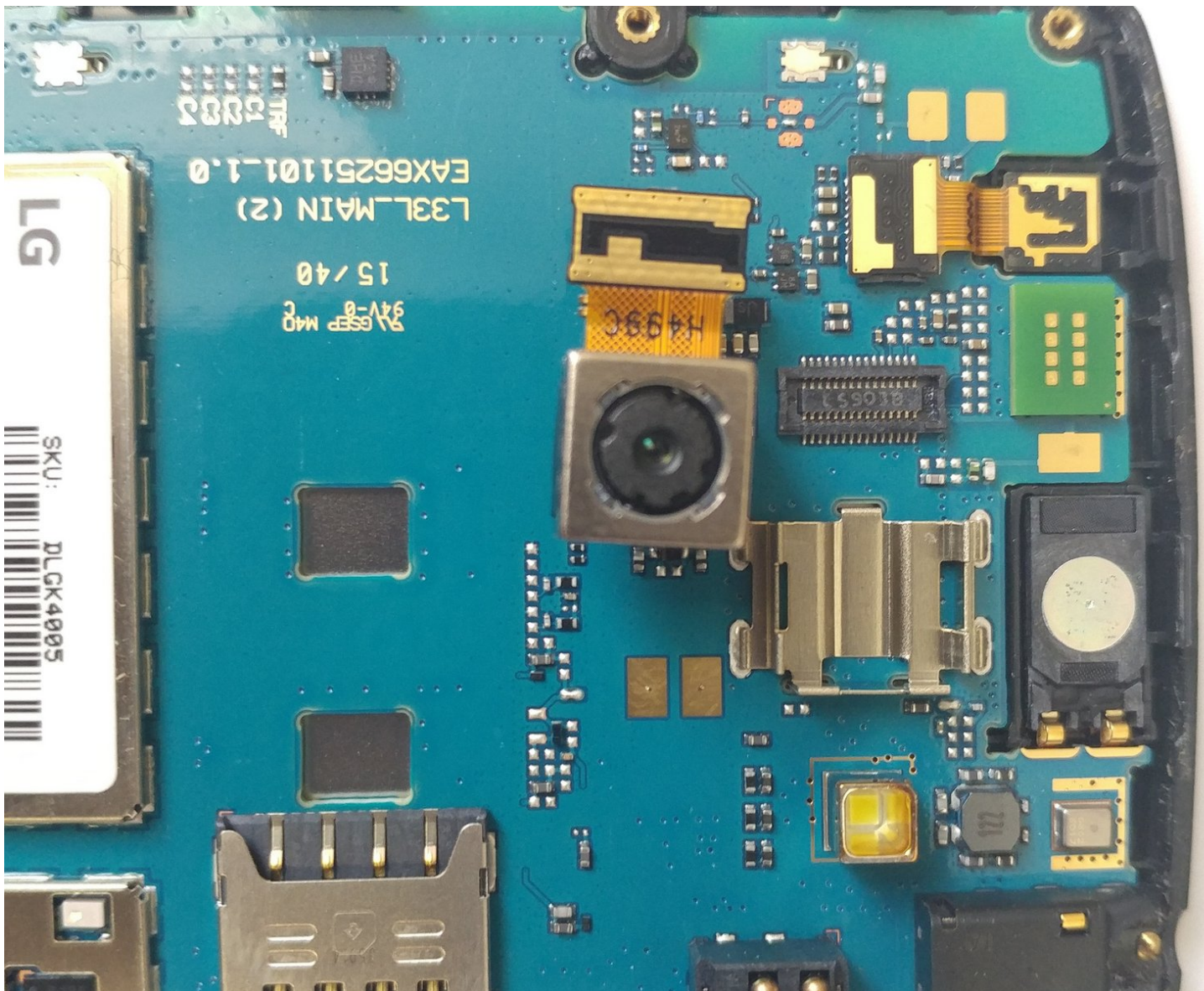




# LG Risio Rear-Facing Camera Replacement

This guide will walk through how to replace the rear camera on the LG Risio.

Written By: Erika Heppner



## INTRODUCTION

If the rear-facing camera is taking photos that are blurry, replacing the camera may fix that issue. Use this guide to replace the rear-facing camera.



### TOOLS:

- [Phillips #0 Screwdriver](#) (1)
  - [iFixit Opening Tools](#) (1)
-

## Step 1 — Back Panel



- Use a plastic opening tool to separate the back panel from the device.
- Remove the back panel.

## Step 2 — Battery



- Place your thumb along the bottom of the battery and pry upwards to remove.



## Step 3 — Midframe



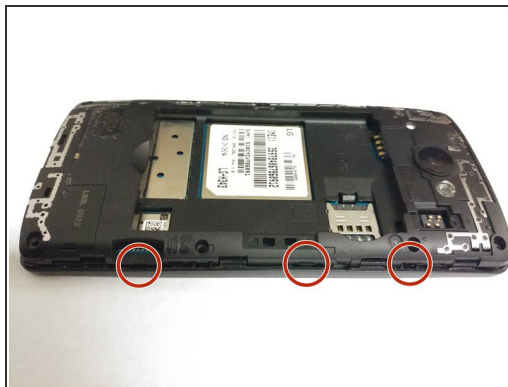
- Press down on the SIM eject tab with a fingernail (or iFixit opening tool), and slide the SIM card out.

## Step 4



- Remove the eight Phillips #0 screws from the internal support frame.

## Step 5



- Use an opening tool on the marked locations to lift the edges up. There should be a small click when lifting these edges up.

## Step 6



- Using your hand, pick up the midframe to separate it from the phone.
- ⚠ If the midframe does not want to lift off, go back and repeat step 6.

To reassemble your device, follow these instructions in reverse order.