



# LG Rizio Screen Replacement

This will guide you through the process of removing and replacing the LG Rizio's screen and digitizer assembly.

Written By: John Breaux





## TOOLS:

- [iFixit Opening Tools](#) (1)
- [Phillips #0 Screwdriver](#) (1)
- [Heat Gun](#) (1)

## Step 1 — Back Panel



- Use a plastic opening tool to separate the back panel from the device.
- Remove the back panel.

## Step 2 — Battery



- Place your thumb along the bottom of the battery and pry upwards to remove.

## Step 3 — Midframe



- Press down on the SIM eject tab with a fingernail (or iFixit opening tool), and slide the SIM card out.

## Step 4



- Remove the eight Phillips #0 screws from the internal support frame.



## Step 5



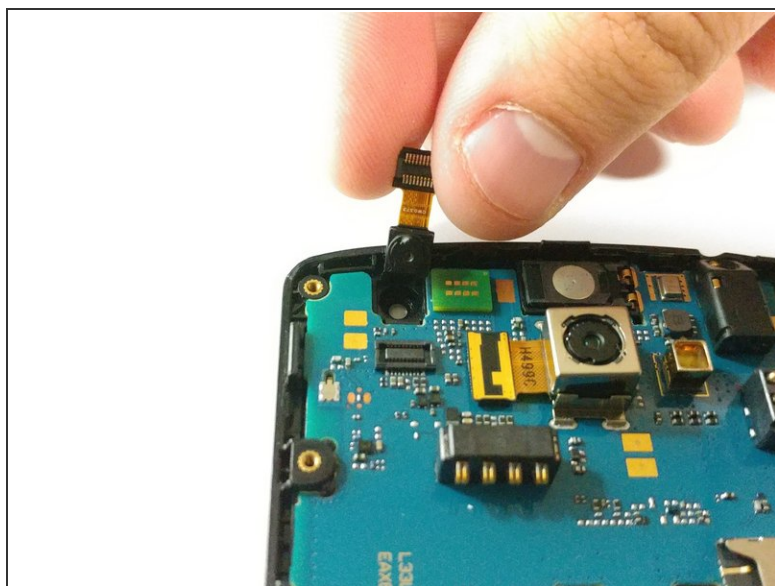
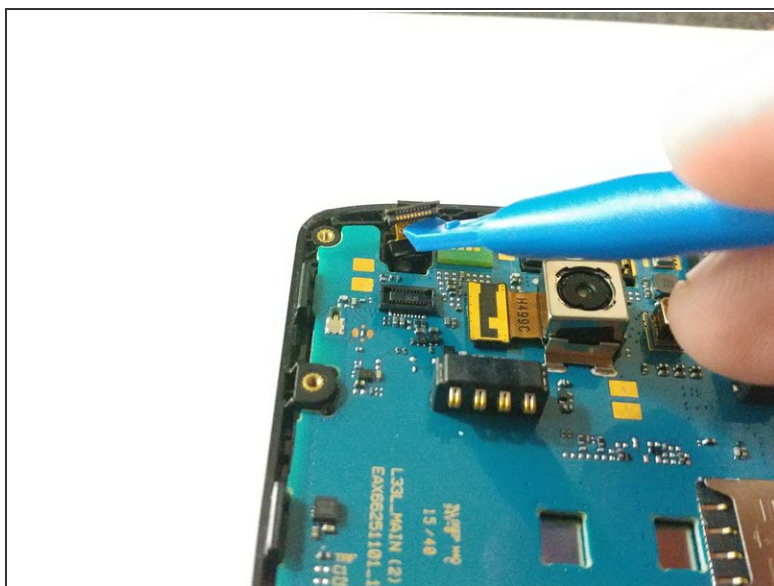
- Use an opening tool on the marked locations to lift the edges up. There should be a small click when lifting these edges up.

## Step 6



- Using your hand, pick up the midframe to separate it from the phone.
- ⚠ If the midframe does not want to lift off, go back and repeat step 6.

## Step 7 — Front-Facing Camera



- Unclip the front camera connector from the motherboard and lift it from the frame.

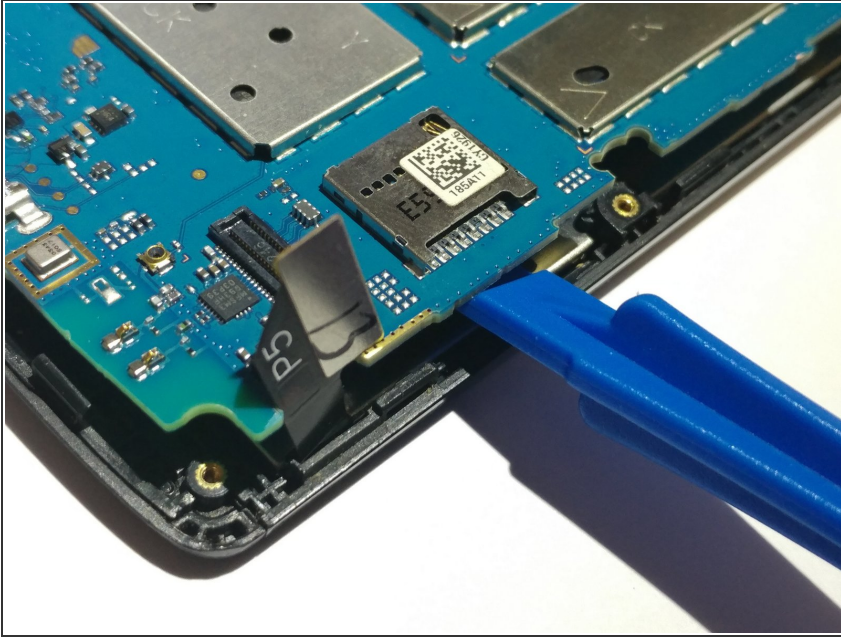
## Step 8 — Motherboard



- Detach the screen connector from the motherboard by putting your thumb underneath it and lifting up.
- ⓘ The screen connector is the part that has P5 written on it.



## Step 9



- On the side with the screen connector, pull the two tabs away from the device.
- Use the plastic opening tool to lift the motherboard starting on the bottom right corner and pulling upwards.

## Step 10 — Screen



- Using a hot air gun or hair dryer, heat the screen assembly, and pry it from the frame using your fingers (or an iFixit prying tool).

To reassemble your device, follow these instructions in reverse order.

This document was generated on 2019-09-23 08:40:24 PM (MST).

