



LG Rumor LX260 Teardown

Written By: Chris Green



INTRODUCTION

The LG Rumor is a full QWERTY keyboard slider phone available from Sprint in 2008. It has an SD card slot and runs a unique OS.



TOOLS:

- [Phillips #00 Screwdriver](#) (1)
 - [Flathead 3/32" or 2.5 mm Screwdriver](#) (1)
 - [Spudger](#) (1)
-

Step 1 — LG Rumor LX260 Teardown



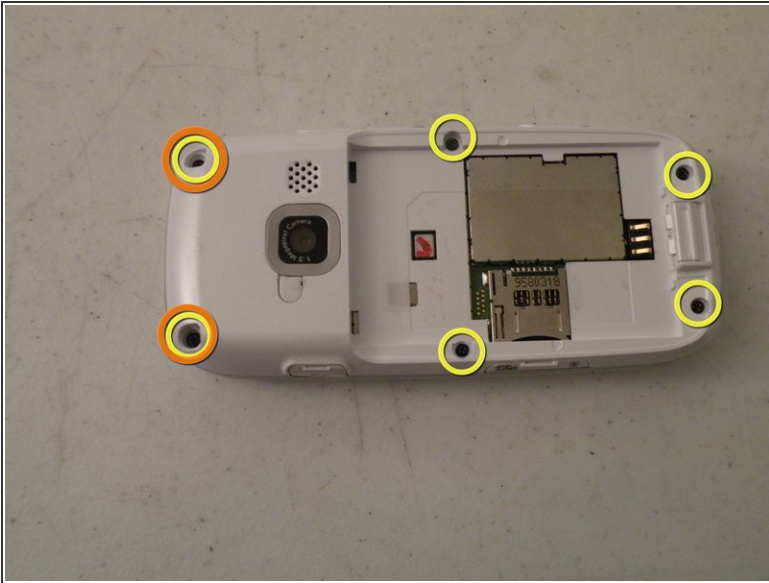
- The LG Rumor, This phone is the broken phone that I can't seem to fix also depicted here: [Turns on, then shuts off right after](#)

Step 2



- Now, start by removing the battery, it is attached to the back cover, and can be removed by pushing the tab back.

Step 3



- Remove these 6 phillips screws:
- These two top screws are covered by rubber plugs that can be removed by a small flathead screwdriver, or a fingernail.

Step 4



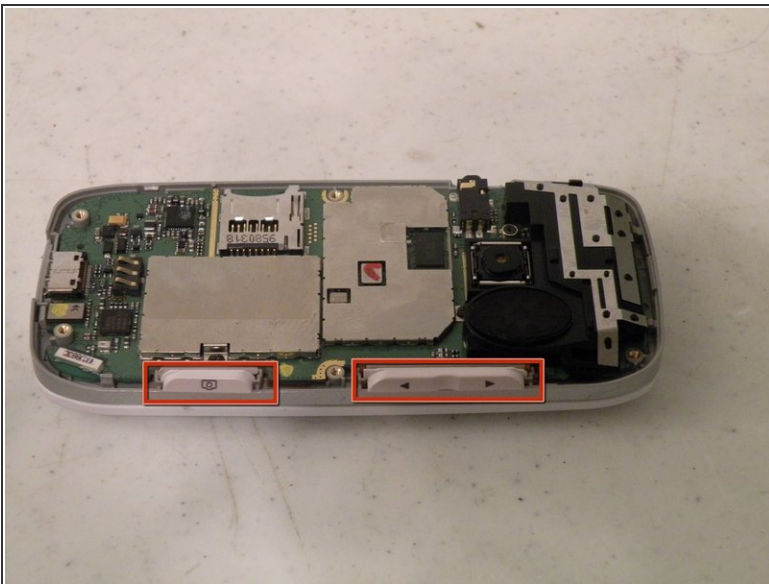
- Remove the covers for the Headphone, Micro SD and Charging connectors, but be careful, they are still connected, pull them only as far as they will come out!

Step 5



- You should now be able to lift the back cover off, it is held on with a mild adhesive, so a little force may be required the first time.

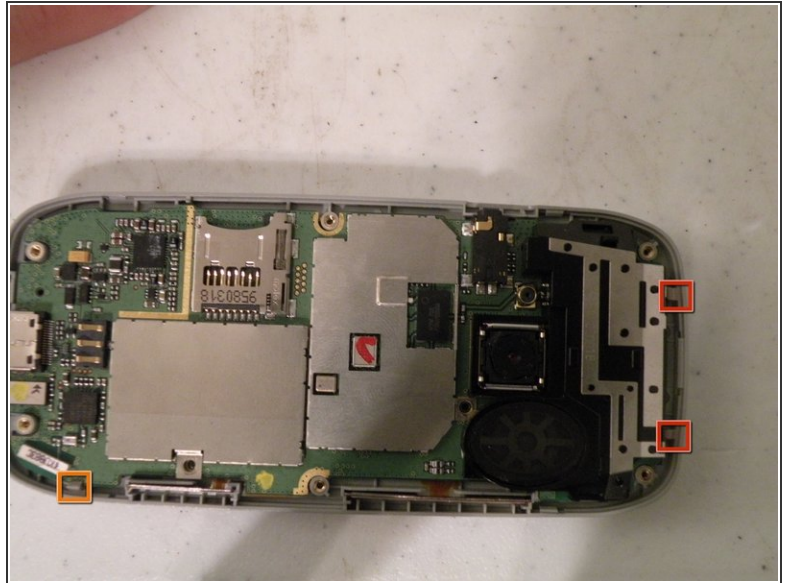
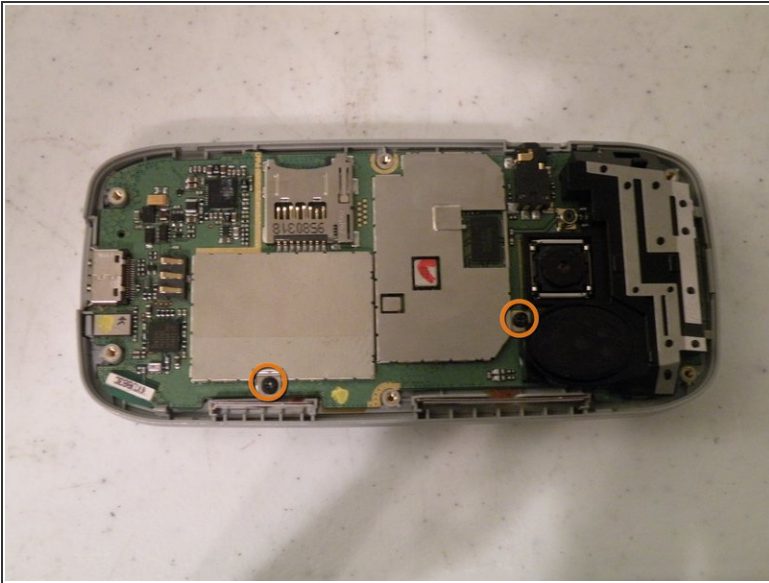
Step 6



- Remove the "Camera" and "Volume" buttons.

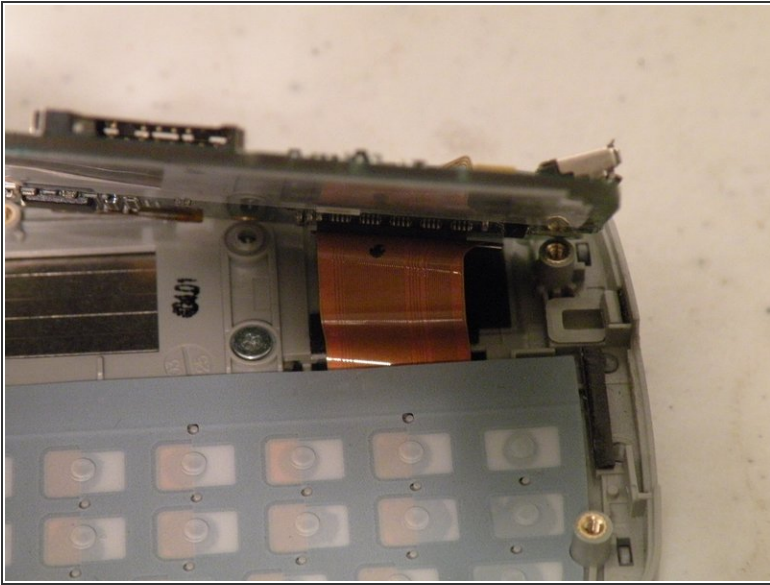
⚠ Be careful, the actual buttons, are attached to the logic board with a very thin ribbon cable, only remove the button covers.

Step 7



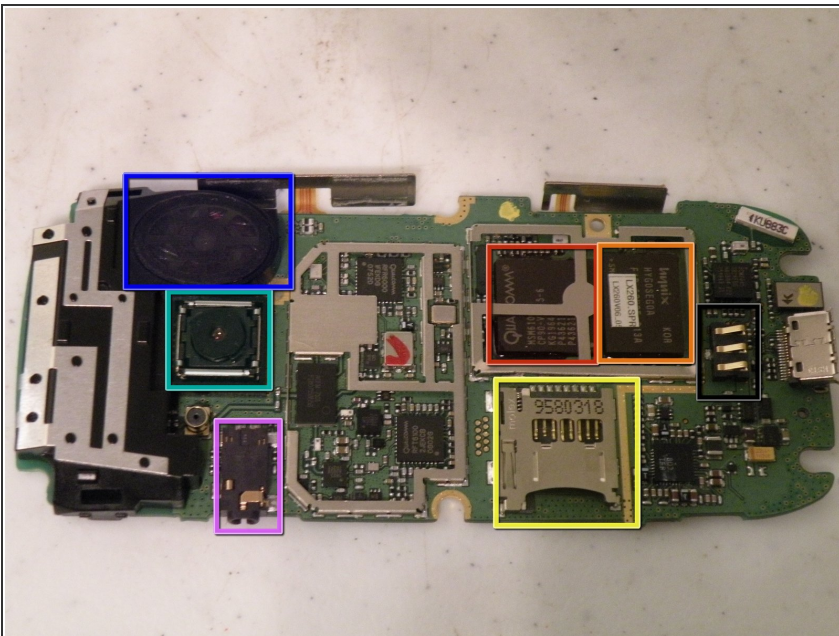
- Remove these two phillips screws:
- Now, removed the highlighted clips (2nd Picture) this will free the logic board.
- I recomend starting with this one, and once this tab is free, you can just slide it around the other clips.

Step 8



- Now, pivot the logic board up, to reveal the LCD/Numeric Keypad Cable, remove this with a spudger or flathead screwdriver.
- You should now be able to remove the logic board.

Step 9



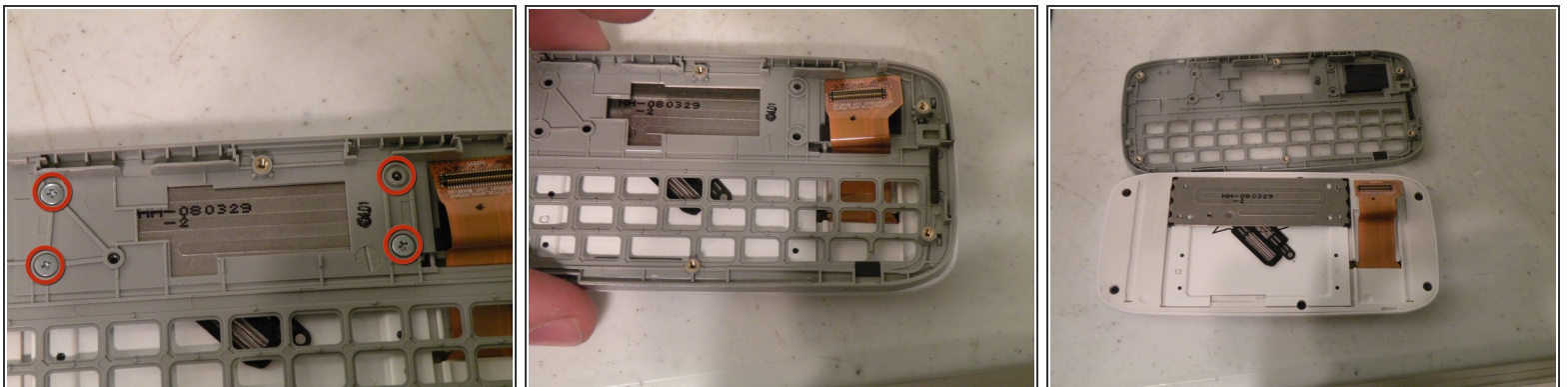
- The Logic board:
- The CPU is a Qualcomm MSM6100 ARM Processor
- The RAM, it is manufactured by Hynix
- The Camera 1.3MP, not bad
- The SD Card Slot:
- Speaker [Speakerphone]
- Headphone Jack:
- Battery Contacts:

Step 10



- The keypad cover is easily replaceable, and simply lifts out.

Step 11



- Separating the phone sliding assembly:
- Remove these 4 Phillips screws:
- Now, lift it off, threading the Screen/Number Pad Cable Through the hole.

Step 12



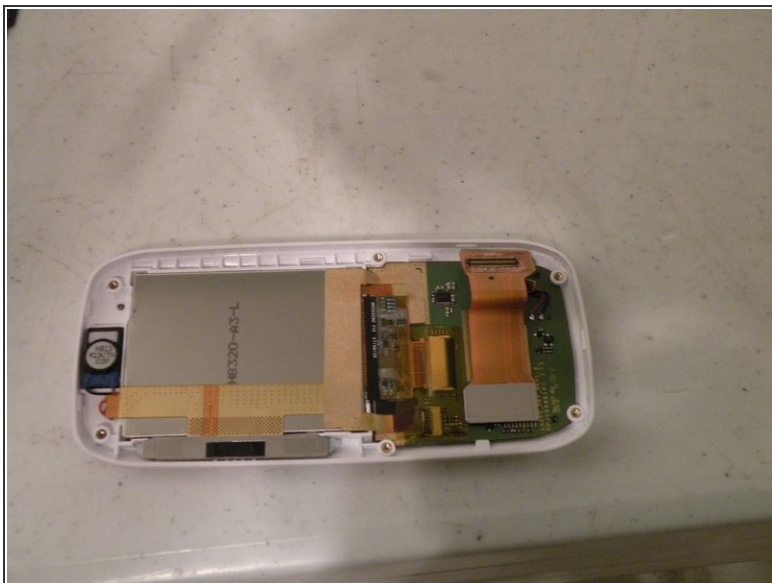
- Remove these phillips screws:

☞ To remove all 6, you will need to slide the sliding assembly to get to the center two screws.

- Now, using a spudger, or flathead screwdriver, seperate the two halves of the assembly, threading the data cable through it's hole.

ⓘ This may take a little force since a mild adhesive is applied around the rim.

Step 13



- Now, detach the data cable from the board using a spudger, be careful, it is a fragile connector, and you should lift it straight up.
- Now, remove this piece of clear yellow-tinted tape covering the connectors.

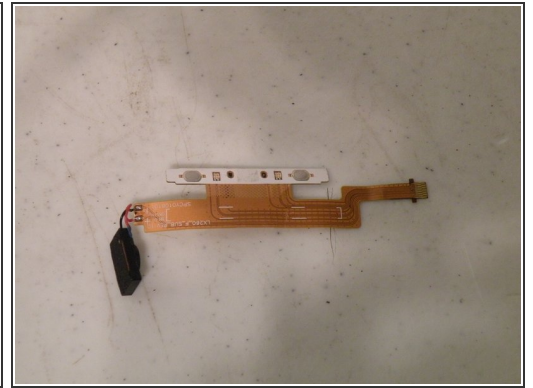
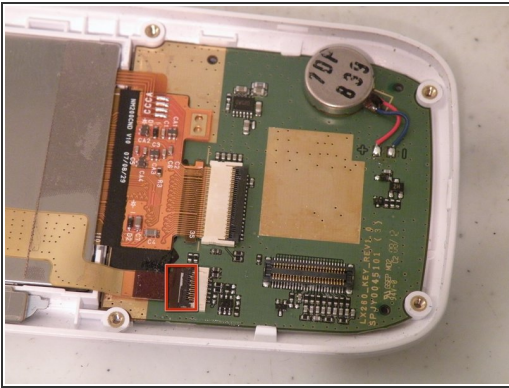
Step 14



- You will now need to remove this piece of gold-mesh tape.

⚠ BE CAREFUL WHEN REMOVING THIS, SINCE IT PROVIDES A GROUND, AND WILL NEED TO BE PUT BACK IN UPON RE-ASSEMBLY!

Step 15



- Now, flip this tab up, towards the bottom of the phone, and remove the speaker/side-button cable.
- Now, slowly lift the cable up, minding the adhesive on the back.
- When you come to the buttons, be especially careful, and when you get to the speaker, use a flathead screwdriver, and pop the speaker out.

Step 16



- Using a spudger or flathead screwdriver, lift this tab up, to release the display cable.
- Now, guide the cable out of the connector, until you can set it on top of the assembly.

Step 17



- Now, to remove the board, use a flathead screwdriver or spudger to clear the tab on one side, then remove the board completely, similarly to the logic board.

Step 18



- You can now lift the keypad cover off, just like we did earlier with the alphabetical keyboard.

Step 19



- Unfortunately, the LCD panel is held in place by a heavy adhesive, and removal will almost certainly crack the screen, so only remove it if you are replacing the screen.

Step 20



- Group Shot!

To reassemble your device, follow these instructions in reverse order.