



# LG Spectrum Sim/SD Port Replacement

Replacing the SIM/SD Port can potentially fix any issues related to data storage issues.

Written By: Aiman Sallam



---

## INTRODUCTION

If the phone is having internet issues or memory problems, replacing the SIM/SD Port could resolve these problems.

---

### TOOLS:

- [iFixit Opening Tools](#) (1)
  - [Phillips #000 Screwdriver](#) (1)
-

## Step 1 — Battery



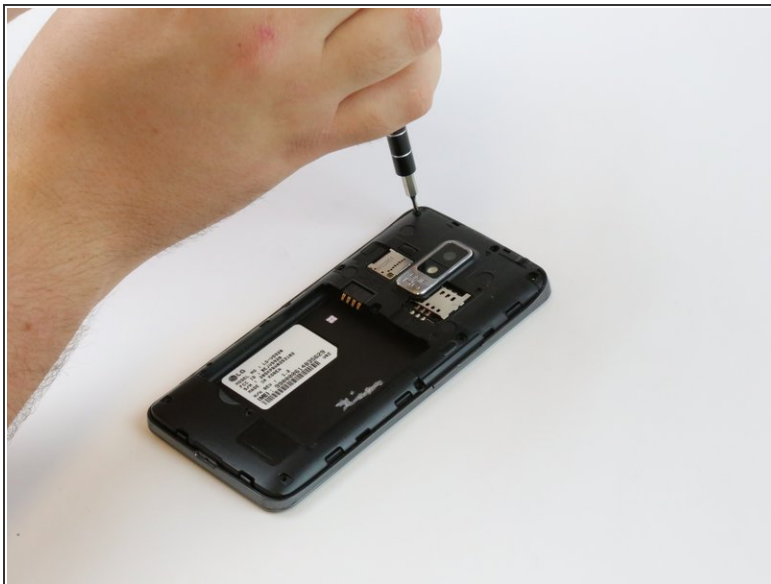
- Using your thumbnail, lift up on the notch in the middle of the bottom side of the phone.

## Step 2



- Using either your thumbnail or a plastic opening tool, lift up on the battery using the notch in the bottom left hand corner of the battery and remove it from the phone.

## Step 3 — Sim/SD Port



- Remove eleven 4mm Phillips #000 screws with a PH000 screwdriver.
- ⓘ Use the magnetic mat to keep the screws in one place.



## Step 4



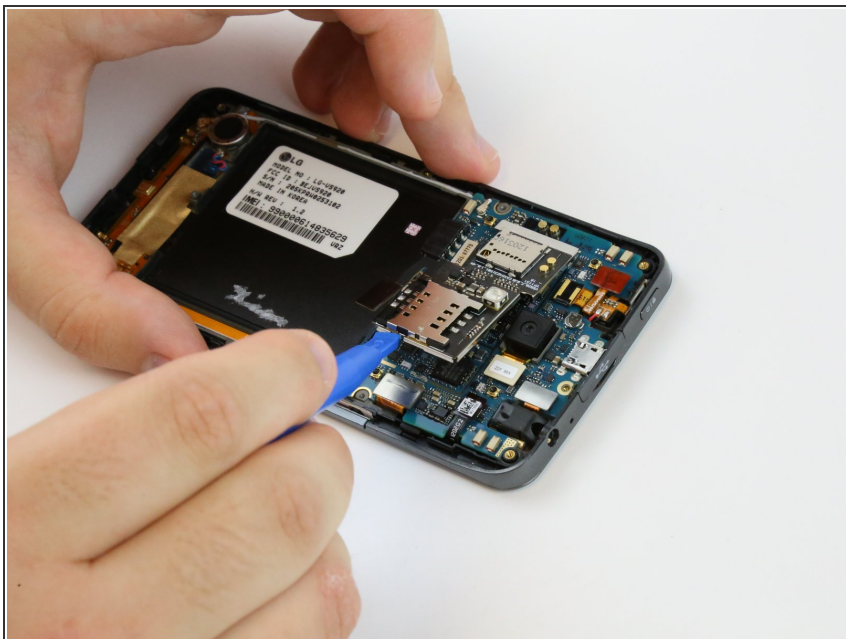
- Use the plastic opening tool to firmly pry up the plastic backing around the perimeter of the phone.

## Step 5



- Detach the black rectangular film attached to the SIM/SD card plate with a plastic opening tool.

## Step 6



- Hook the plastic opening tool underneath the plate and gently lift it up.

## Step 7



- Gently wiggle the plate side-to-side while pulling up to release it from the metal clamps holding it in.

To reassemble your device, follow these instructions in reverse order.