



LG Stylo 2 Charger Port Replacement

This guide will show you how to remove and replace the charger port if it was damaged and unusable for any reason.

Written By: Devon Barber



INTRODUCTION

If your charge port isn't working properly or damaged you may need to have it replaced. This guide will show you how to do so easily and on your own.

In this guide we will be using a soldering Iron to remove the charging port, so be careful and prepared when using this piece of equipment. For more information on how to solder and desolder connections, please visit [this guide](#).

NOTE: You can also use this guide to replace the entire daughterboard instead of the specific charging port.



TOOLS:

- [iFixit Opening Tools](#) (1)
 - [Phillips #00 Screwdriver](#) (1)
 - [Precision Tweezers Set](#) (1)
 - [Soldering Iron](#) (1)
-

Step 1 — Battery



- First you need to remove the back case of the phone.
- Place the phone face down.
- Using the plastic opening tool, insert into the initial gap shown.
- Slowly guide the tool around the case until the case comes off with ease.

Step 2



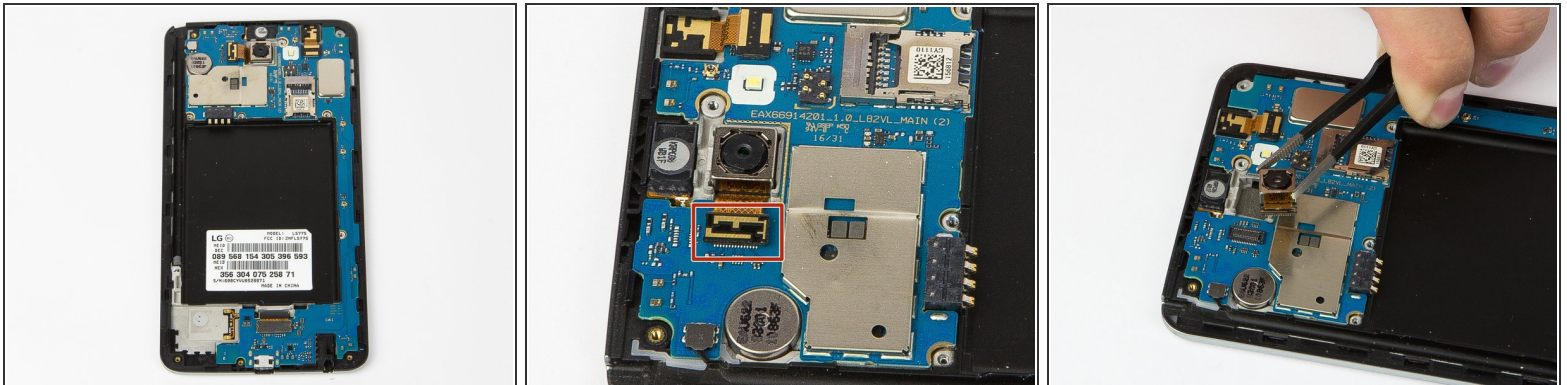
- Place the back case to the side.
- Use your finger or the opening tool to remove battery.
- Remove the battery carefully to not damage the phone or the battery.

Step 3 — Rear Camera



- Remove the eleven 4mm Phillips #00 screws.
- Place screws in safe location.
- Use Plastic opener tool to remove inner case.
- Gently remove inner case.

Step 4



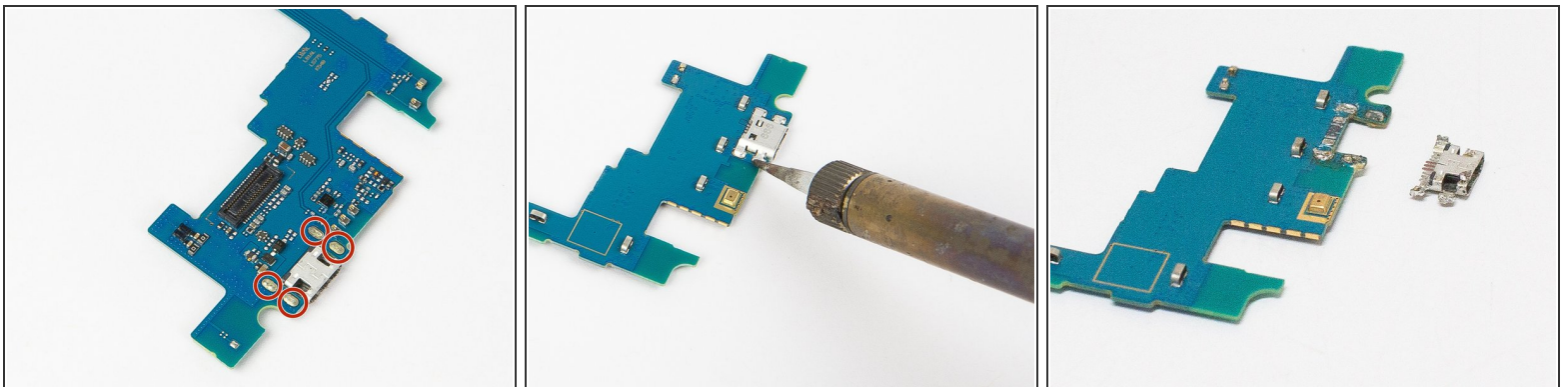
- Use your finger or the opener to flip the flex cable shown in red box.
- Use the precision tweezers to remove camera carefully.

Step 5 — Motherboard



- Gently flip the cables(shown in red boxes) using the opener tool.
- Gently remove the motherboard itself.
- Place motherboard on a soft surface to not damage it.

Step 6 — Charger Port



- Place motherboard on safe surface for Soldering Iron use.
- Desolder the four connections
- ⓘ For more information on how to solder and desolder connections, please visit [this guide](#).
- Use Iron till the port is able to be removed.
- Remove the port carefully and place on safe surface.

To reassemble your device, follow these instructions in reverse order.