



LG Stylo 3 Plus Speaker Replacement

Step by step guide to replace the top speaker in the LG Stylo 3 Plus.

Written By: Dillon Cooper



INTRODUCTION

Throughout prolonged use of a cellphone, the top speaker will be prone to malfunctioning. Dirt and dust particles may enter the top speaker, which may in turn muffle or alter the sound playing from the speaker. If audio problems persist after you cleaned your device, the speaker may need to be replaced. This guide will show you how to replace the top speaker in your LG Stylo 3 Plus.




TOOLS:

- [Phillips #000 Screwdriver](#) (1)
 - [Tweezers](#) (1)
 - [iFixit Opening Tools](#) (1)
-

Step 1 — Back Cover



 Power off the phone before beginning disassembly.

- Place the phone face down.
- Insert a fingernail or a plastic opening tool into the gap on the side of the phone.
- Carefully slide your finger or the tool throughout the edge of the phone to ease the back case off.

Step 2 — Battery



- Place the back cover off to the side.
- Insert the opening tool into the small gap below the battery.
- Carefully pop the battery out to prevent damage.

Step 3 — Rear Camera



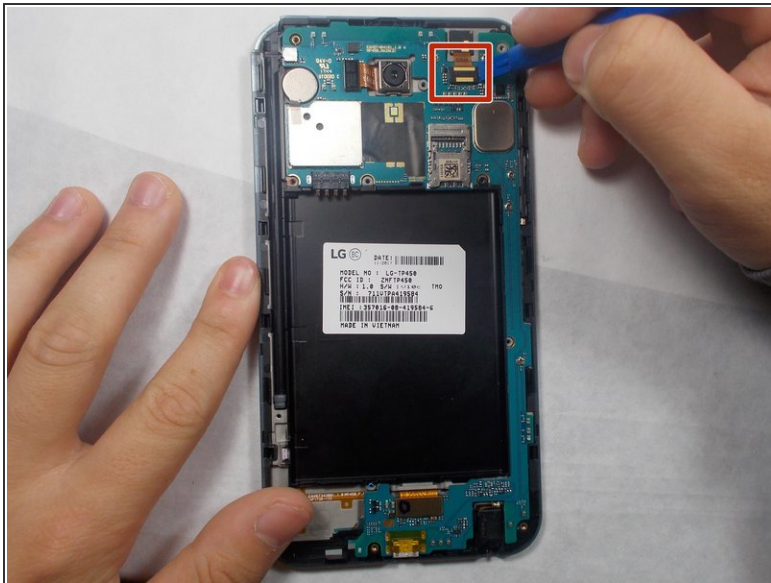
- Remove the twelve 4mm screws using the Phillips #000 screwdriver.
- Use the plastic opening tool to remove the inner case.
- Carefully remove the inner case.

Step 4



- Use your fingernail or the plastic opening tool to flip the flex cable.
- Use the precision tweezers to carefully grasp and pull out the camera.

Step 5 — Front Camera



- Carefully flip open the flex cable box with the plastic opening tool.
- Using precision tweezers, carefully lift the front camera off the device.

Step 6 — Motherboard



- Gently flip open the flex cable box using a blue plastic opening tool.
 - Carefully remove the motherboard with your hands or a blue plastic opening tool.
- ⚠ Make sure all parts are secure while taking out motherboard.

Step 7 — Top Speaker



- Remove the top speaker.

To reassemble your device, follow these instructions in reverse order.