



LG Thrill 4G Battery Replacement

This guide will show you how to remove and replace the battery for the LG Thrill 4G.

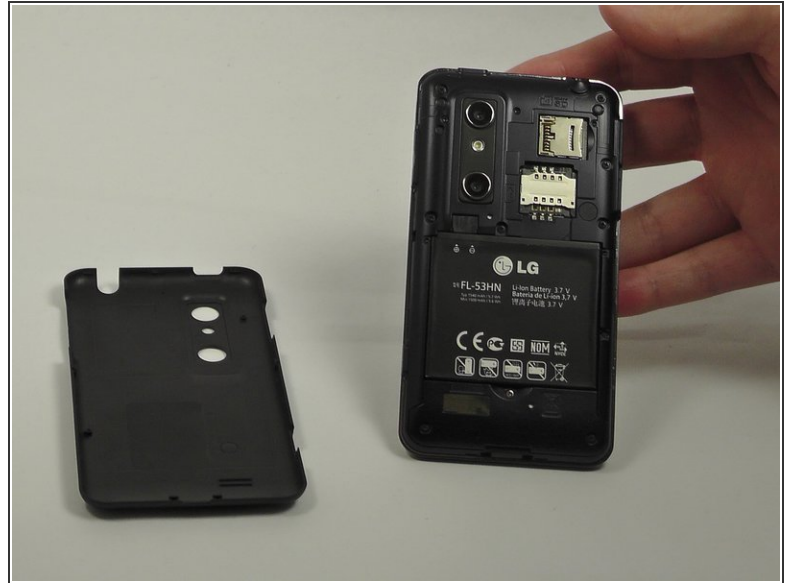
Written By: Luis Mena



INTRODUCTION

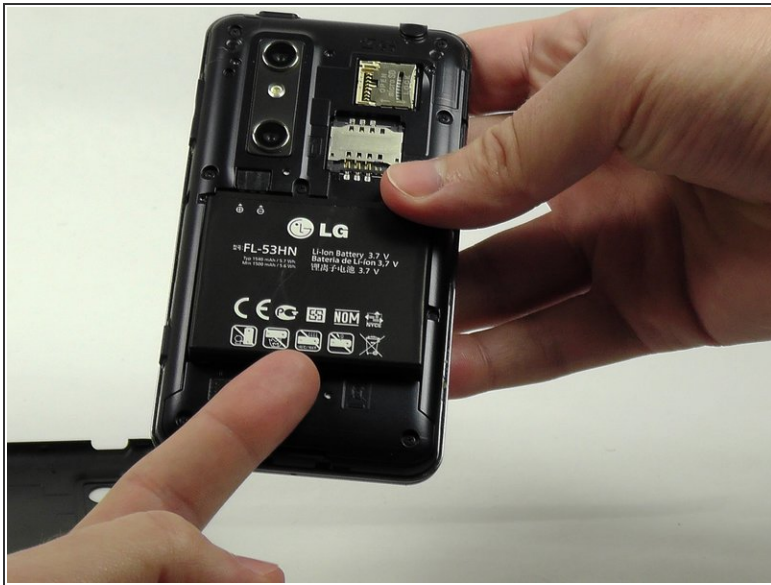
Make sure the phone is turned off before starting this replacement guide.

Step 1 — Back Cover Removal



- Use your fingernail or a plastic opening tool to remove the back cover of the phone.
 - ⓘ There is a notch located at the bottom of the phone that can be used for opening leverage.

Step 2 — Battery Removal



- i The battery is located at the bottom half of the phone with the LG logo on it.
- i There is a semi-circular notch at the bottom edge of the battery with the silver screw in it.
 - Place a finger in the notch and push up against the battery to pop it out.

To reassemble your device, follow these instructions in reverse order.