



LG Thrill 4G Motherboard Replacement

This guide will show you how to replace the LG Thrill 4G smartphone motherboard.

Written By: Luis Mena

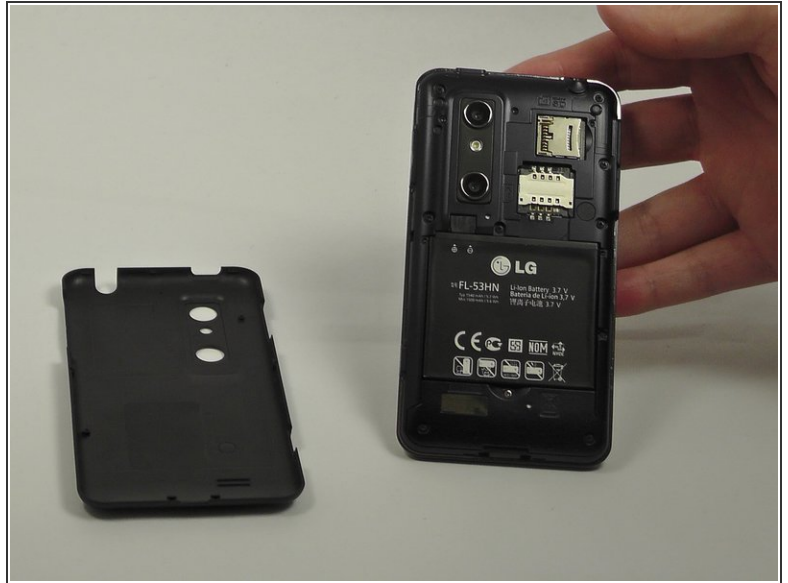




TOOLS:

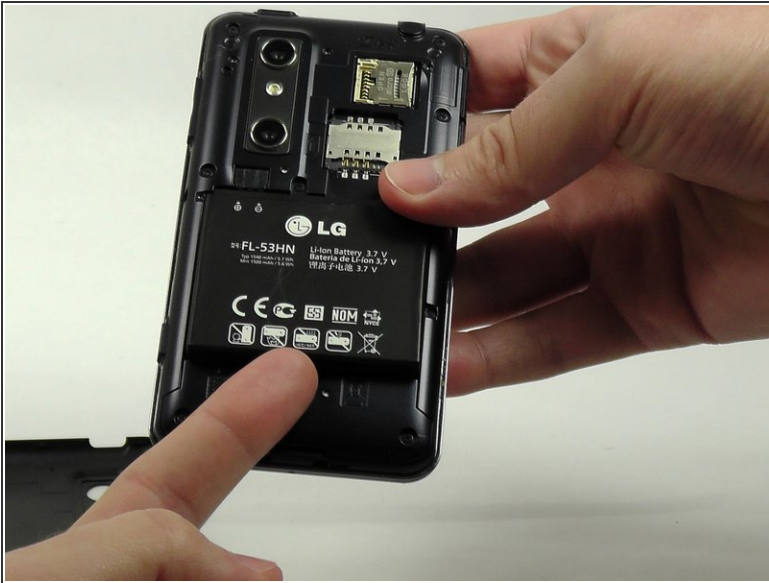
- [iFixit Opening Tools](#) (1)
 - [Spudger](#) (1)
 - [Phillips #00 Screwdriver](#) (1)
 - [Tweezers](#) (1)
-

Step 1 — Back Cover Removal



- Use your fingernail or a plastic opening tool to remove the back cover of the phone.
- ⓘ There is a notch located at the bottom of the phone that can be used for opening leverage.

Step 2 — Battery Removal



- i** The battery is located at the bottom half of the phone with the LG logo on it.
- i** There is a semi-circular notch at the bottom edge of the battery with the silver screw in it.
 - Place a finger in the notch and push up against the battery to pop it out.

Step 3 — Screw Removal



- Remove the three screws from the bottom of the phone. These three screws are located on the speaker itself:
 - Two 5.5 mm Phillips #00 screws
 - One 4 mm Phillips #00 screw

Step 4 — Speaker Removal



- There is a notch located at the bottom of the speaker. Insert a fingernail in to the notch and pull up.

Step 5 — Buttons



i Place buttons and covers in a safe spot after removal so none are misplaced. There are three buttons and two covers:

- Power button
- Volume button
- 3D camera button
- USB cover
- HDMI cover

Step 6



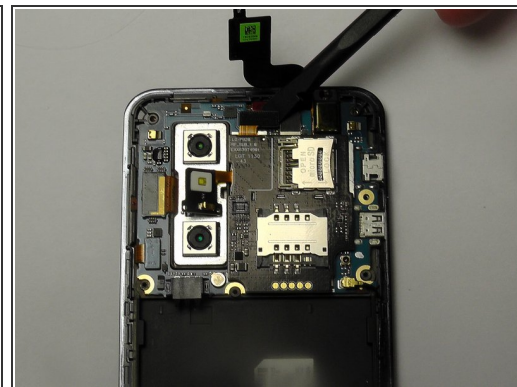
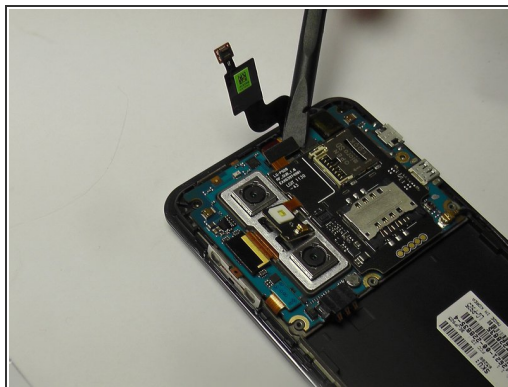
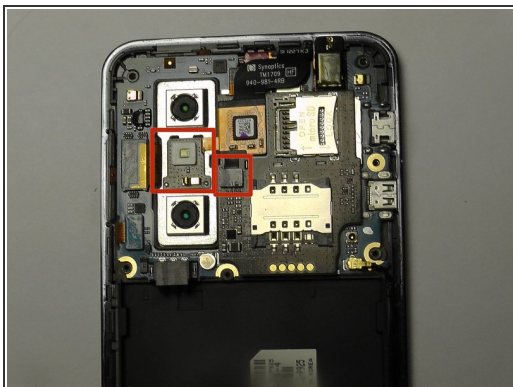
- Place plastic opening tool under the bezel at either the bottom left or bottom right corner of the HDMI cover.
 - This will loosen the both, the HDMI and USB covers enough, so that you may now pull upwards and pop them right off.
- ☑ Place covers in a safe spot after removal.

Step 7



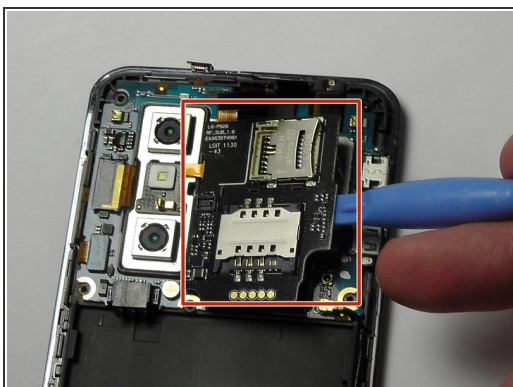
- Remove the six screws within the mid-cover bezel.
- 6 - 5.5mm length PH00 screws

Step 8 — Ribbon Cable Disconnection



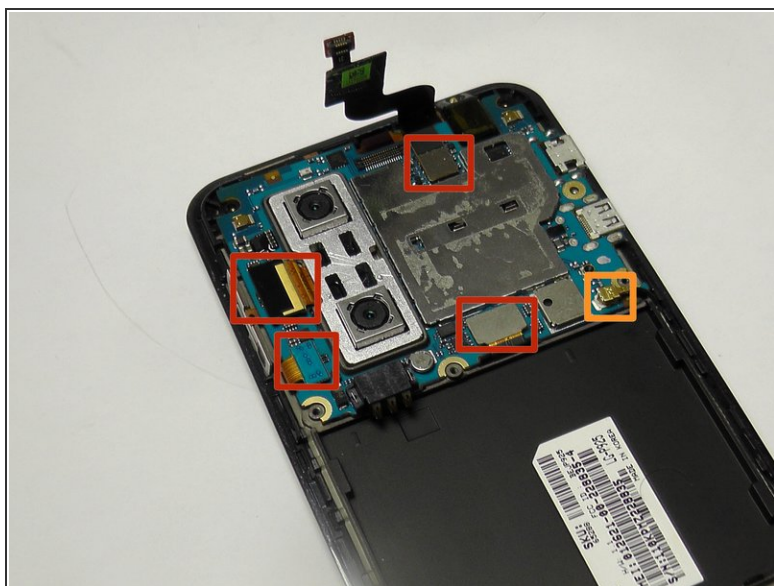
- Utilize a spudger or plastic opening tool, and very gently disconnect the ribbon cable in two different areas, attached to the black micro SIM card board.

Step 9 — SD/SIM Card Board Removal



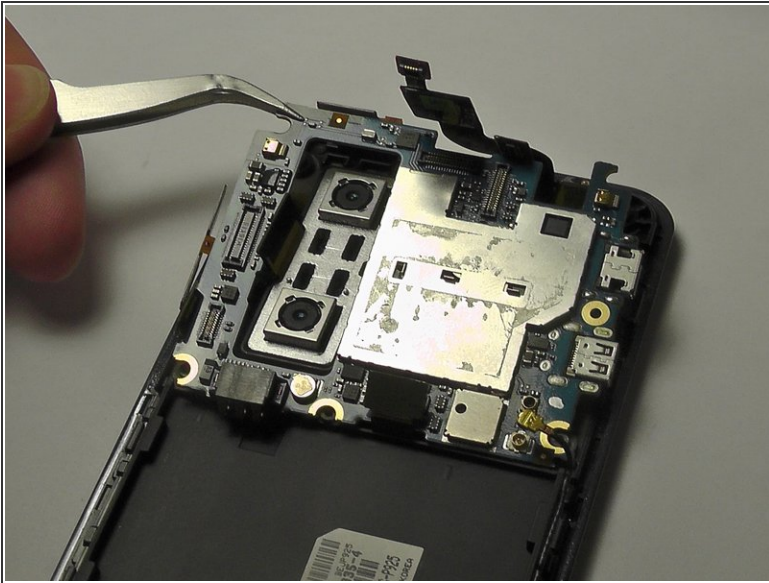
- Carefully pry the board up to detach it from its lock bezel socket.
 - Make sure to pry the little tab connected to the camera unit as well.

Step 10 — Motherboard



- Use a plastic opening tool or spudger to gently lift and unsnap the ribbon cables connected to the motherboard.
- Remove the antenna cable by disconnecting the end connected to the bottom right corner of the motherboard.

Step 11



- Use a spudger or pair of tweezers to grab the top left corner of the motherboard and gently lift it out.
- ⓘ Be careful with the ribbons when lifting the motherboard out. Make sure they do not get caught.

To reassemble your device, follow these instructions in reverse order.