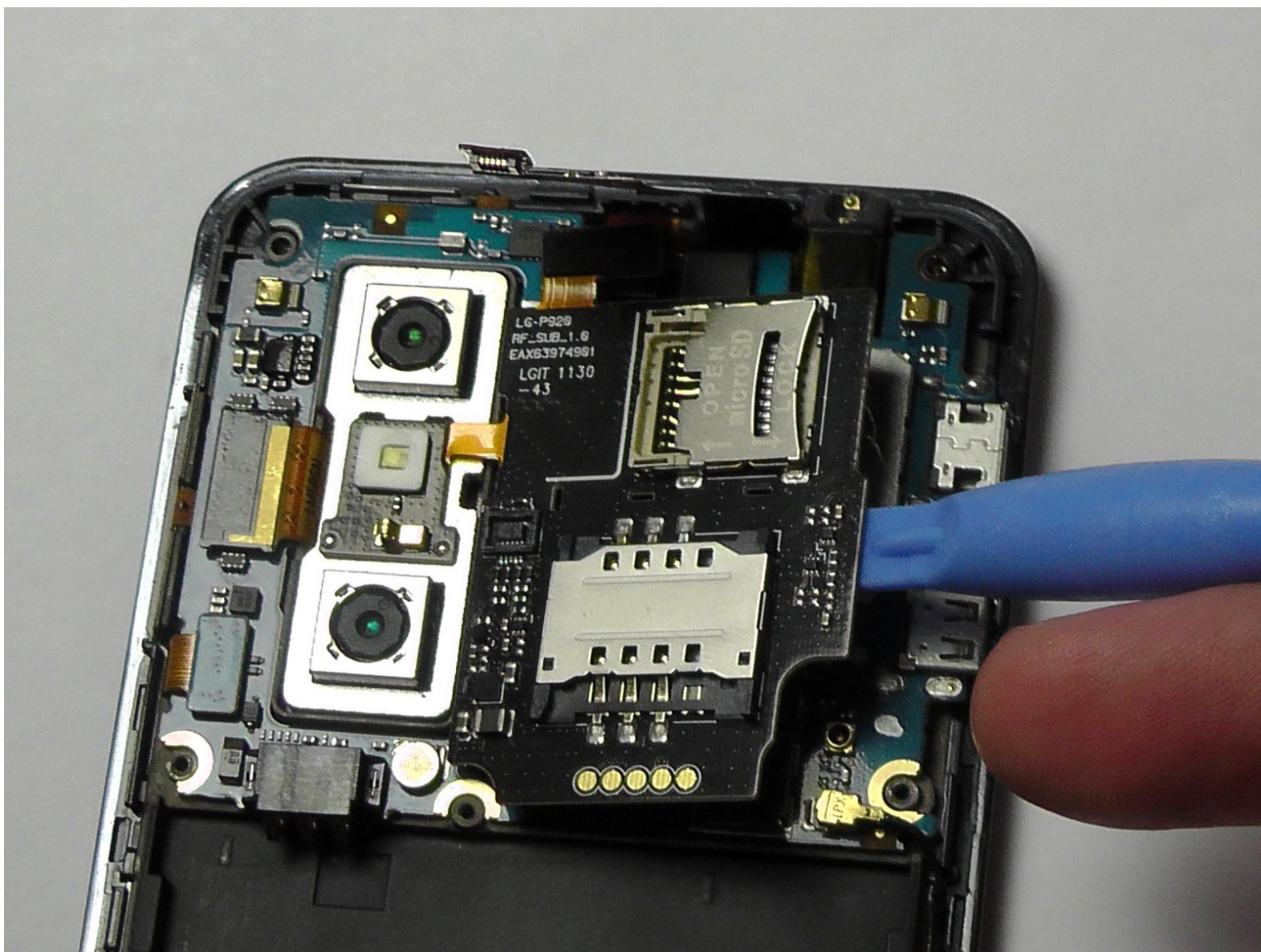




LG Thrill 4G SIM/Micro SD Card Replacement

This guide will show you how to disassemble and reassemble the micro sim card board for the LG thrill 4G.

Written By: Khbero Baker



INTRODUCTION

Before we begin disassembling your LG device, make sure your phone is turned off, make sure you have .the back cover and the battery detached to properly access the sim card board.

TOOLS:

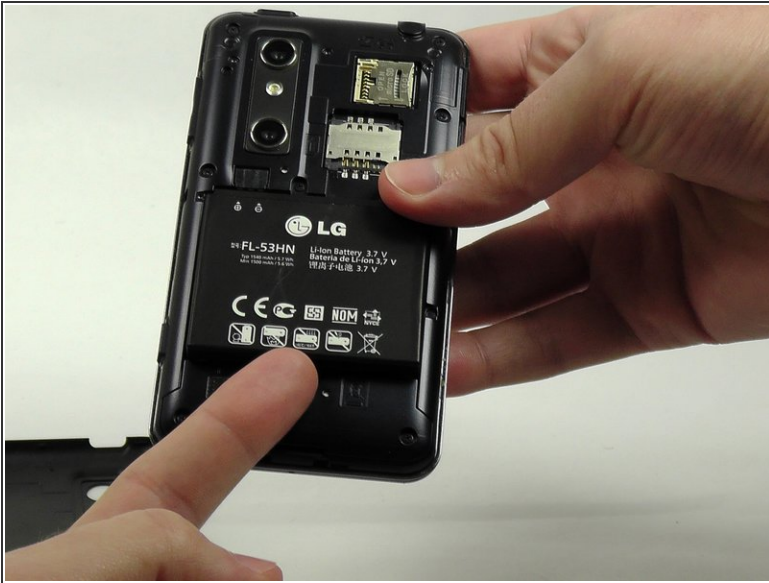
- [iFixit Opening Tools](#) (1)
 - [Spudger](#) (1)
 - [Phillips #00 Screwdriver](#) (1)
-

Step 1 — Back Cover Removal



- Use your fingernail or a plastic opening tool to remove the back cover of the phone.
- ⓘ There is a notch located at the bottom of the phone that can be used for opening leverage.

Step 2 — Battery Removal



- i** The battery is located at the bottom half of the phone with the LG logo on it.
- i** There is a semi-circular notch at the bottom edge of the battery with the silver screw in it.
 - Place a finger in the notch and push up against the battery to pop it out.

Step 3 — Screw Removal



- Remove the three screws from the bottom of the phone. These three screws are located on the speaker itself:
 - Two 5.5 mm Phillips #00 screws
 - One 4 mm Phillips #00 screw

Step 4 — Speaker Removal



- There is a notch located at the bottom of the speaker. Insert a fingernail in to the notch and pull up.

Step 5 — Buttons



i Place buttons and covers in a safe spot after removal so none are misplaced. There are three buttons and two covers:

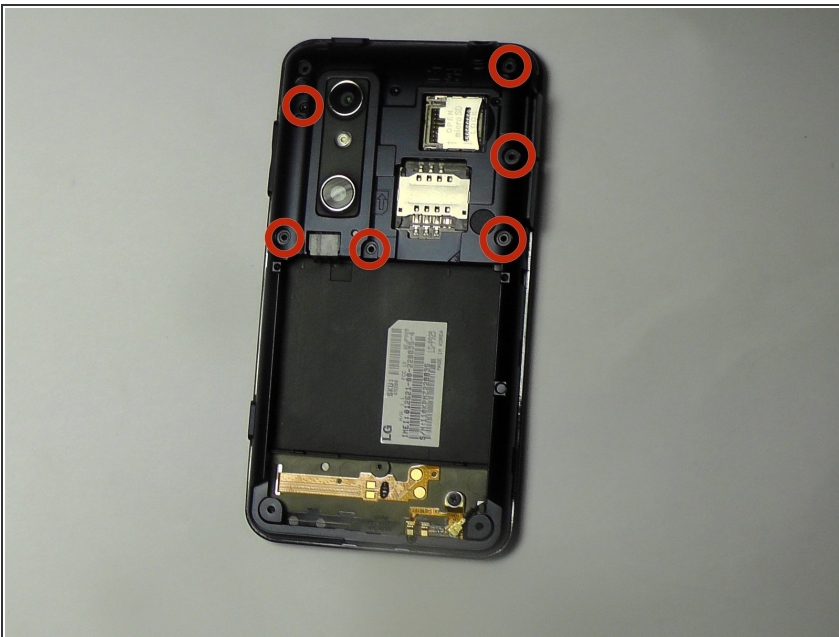
- Power button
- Volume button
- 3D camera button
- USB cover
- HDMI cover

Step 6



- Place plastic opening tool under the bezel at either the bottom left or bottom right corner of the HDMI cover.
 - This will loosen the both, the HDMI and USB covers enough, so that you may now pull upwards and pop them right off.
- ☑ Place covers in a safe spot after removal.

Step 7



- Remove the six screws within the mid-cover bezel.
- 6 - 5.5mm length PH00 screws

Step 8 — Ribbon Cable Disconnection



- Utilize a spudger or plastic opening tool, and very gently disconnect the ribbon cable in two different areas, attached to the black micro SIM card board.

Step 9 — SD/SIM Card Board Removal



- Carefully pry the board up to detach it from its lock bezel socket.
 - Make sure to pry the little tab connected to the camera unit as well.

To reassemble your device, follow these instructions in reverse order.