



LG Tone Active HBS-850 Speaker Replacement

Written By: Faizan Naveed





TOOLS:

- [iFixit Opening Picks set of 6](#) (1)
- [Pry Bar](#) (1)
- [Tweezers](#) (1)
- [Phillips #00 Screwdriver](#) (1)
- [Soldering Iron](#) (1)

Step 1 — Locate Hidden Screw



- Locate the hidden screw as seen in the picture and remove the rubber covering the screw.

Step 2 — Remove Hidden Screw



- Remove hidden screw using a Philips #00 screwdriver.

Step 3 — Pry Open Speaker Housing



- Use a guitar pick or any pry opening tool to gently lift the housing until the speaker end. There is a hidden screw that needs to be removed before the housing can be completely removed.

Step 4 — Locate Hidden Speaker Screw



- Gently remove the pointy rubber covering using tweezers where the speaker rests as shown in the picture.

Step 5 — Remove Hidden Speaker Screw



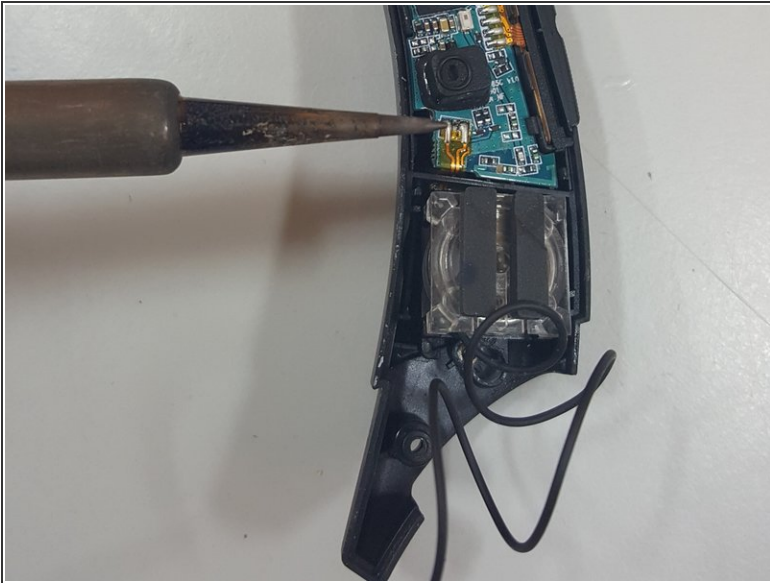
- Use a Philips #00 screwdriver to remove the hidden screw.

Step 6 — Remove Speaker Screw



- Remove the screw holding the speaker in place using a Philips #00 screwdriver.

Step 7 — Desolder Speaker



- Desolder speaker connection using a soldering iron and replace with new speaker.

To reassemble your device, follow these instructions in reverse order.