



# LG Tone Ultra HBS-810 Speaker (Right or Left) Replacement

How to replace speakers on the LG Tone Ultra HBS-810 wireless Bluetooth headset.

Written By: Faizan Naveed





## TOOLS:

- [iFixit Opening Picks set of 6](#) (1)
- [Phillips #00 Screwdriver](#) (1)
- [Pry Bar](#) (1)
- [Tweezers](#) (1)
- [Soldering Iron](#) (1)

## Step 1 — Remove hidden screw.



- First, see which side speaker needs to be replaced.
- Locate the hidden screw as shown in the picture and remove the rubber piece with tweezers.
- Remove the screw using a Philips #00 screwdriver.

## Step 2 — Disassemble the headset.



- Using a guitar pick or any opening tool, open the frame of the headset.

### Step 3 — Remove motherboard screw.



- Using a Philips #00 screwdriver remove the screw holding the motherboard in place.

### Step 4 — Move speaker to uncover hidden screw.



- Slightly push back on the speaker back housing so the speaker can be pushed out as seen in the pictures.

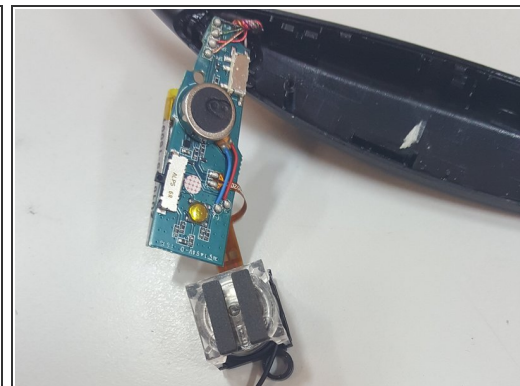


## Step 5 — Remove speaker hidden screw.



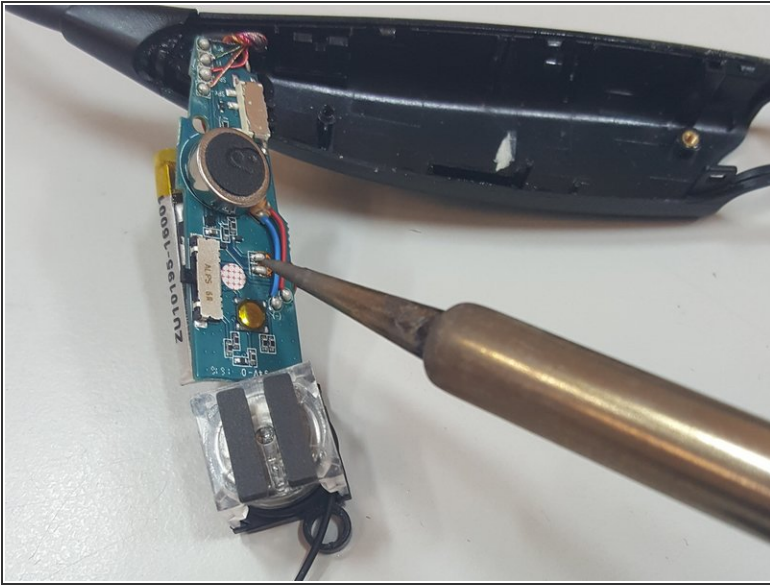
- Once the speaker is out of the way, the hidden screw can be removed using a Philips #00 screwdriver.

## Step 6 — Remove speaker and motherboard.



- Using a pry/opening tool, slightly lift the speaker and motherboard out of place.

## Step 7 — Desolder the speaker.



- Use a soldering iron to desolder the speaker from the motherboard.

To reassemble your device, follow these instructions in reverse order.