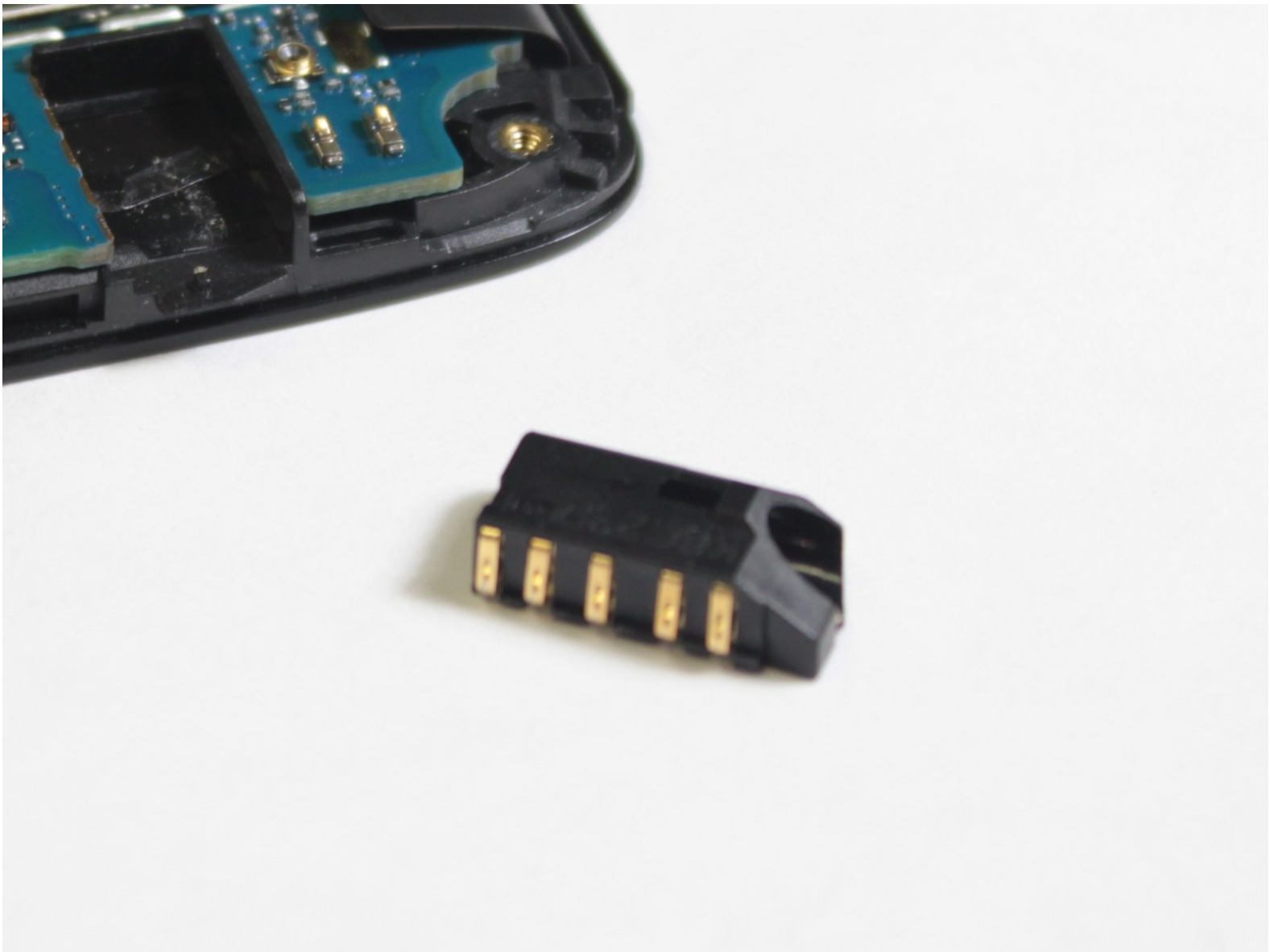




LG Treasure Auxiliary Port Replacement

In this guide you will learn how to properly replace the auxiliary port (headphone jack) on your LG Treasure.

Written By: david amirahmadi



INTRODUCTION

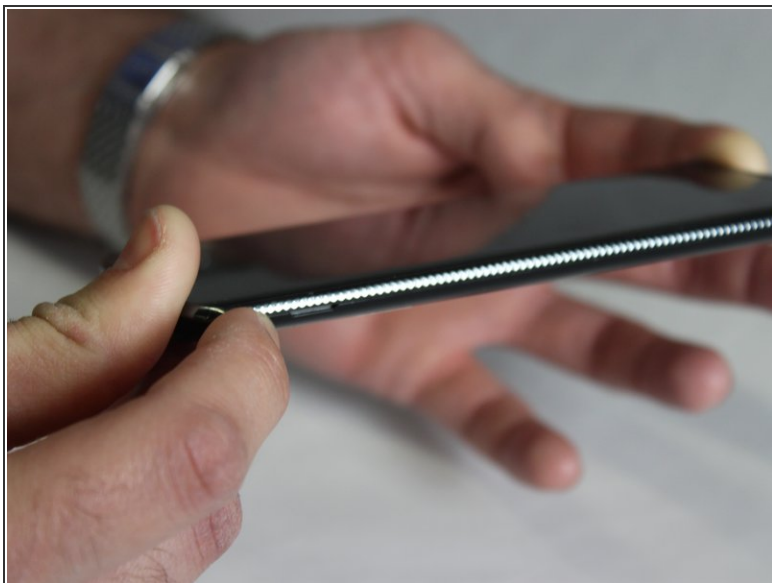
This guide will explain how to replace the Auxiliary Port (headphone jack) on the LG Treasure.



TOOLS:

- [Phillips #000 Screwdriver](#) (1)
-

Step 1 — Battery



- ❗ Make sure the LG Treasure is turned off.
- Pull off the back cover from the phone using the groove on the bottom right side.

Step 2



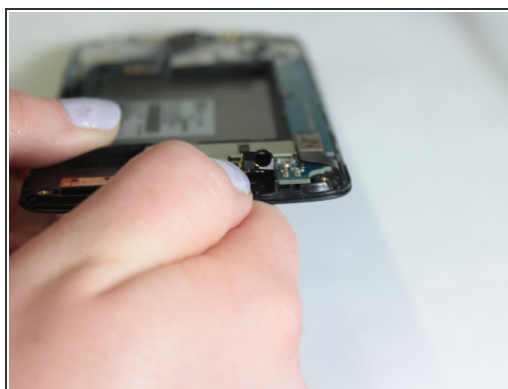
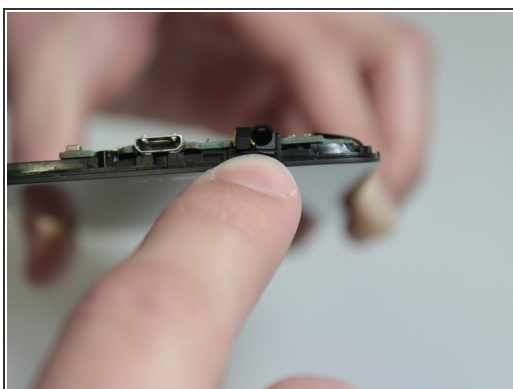
- Remove the battery from the phone by lifting up on the bottom end of the battery.

Step 3 — Auxiliary Port



- Remove all 9 of the 3mm Phillips #000 screws from the digitizer.
- Work your way around the edge of the phone, gently prying the digitizer off the phone.

Step 4



- Insert your finger nail into the groove under the Auxiliary Port and pry the Auxiliary Port out.

To reassemble your device, follow these instructions in reverse order.