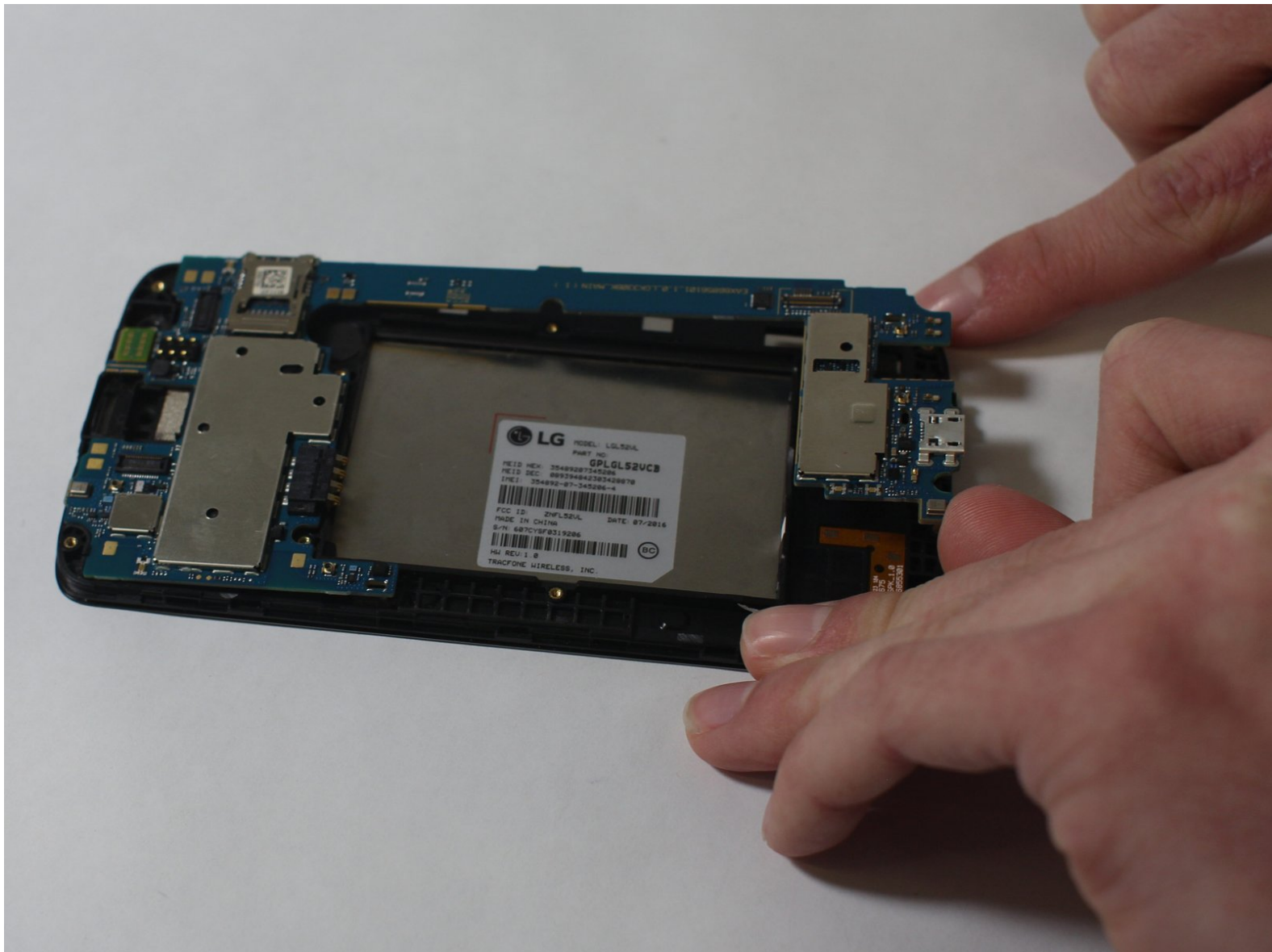




LG Treasure Display Replacement

This guide will show you how to replace the display on your LG Treasure phone.

Written By: david amirahmadi



INTRODUCTION

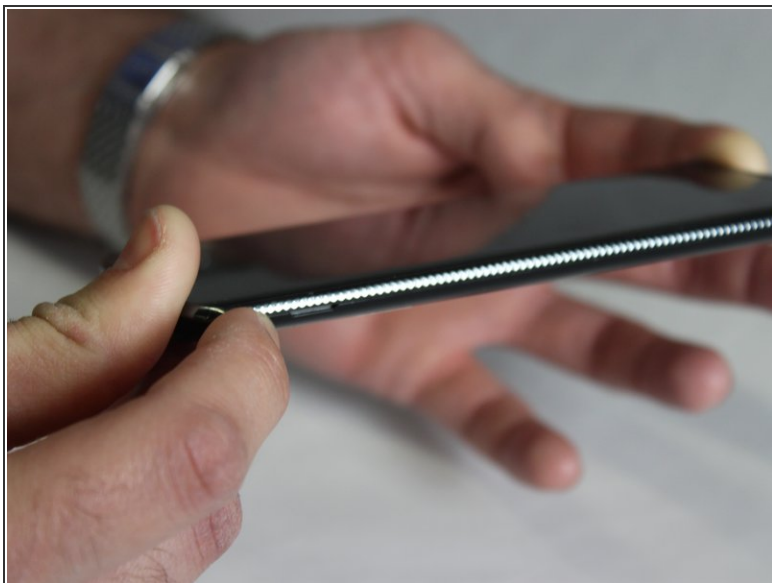
This guide will remove the digitizer and mother board from the display screen, allowing it to be replaced.



TOOLS:

- [Phillips #000 Screwdriver](#) (1)
-

Step 1 — Battery



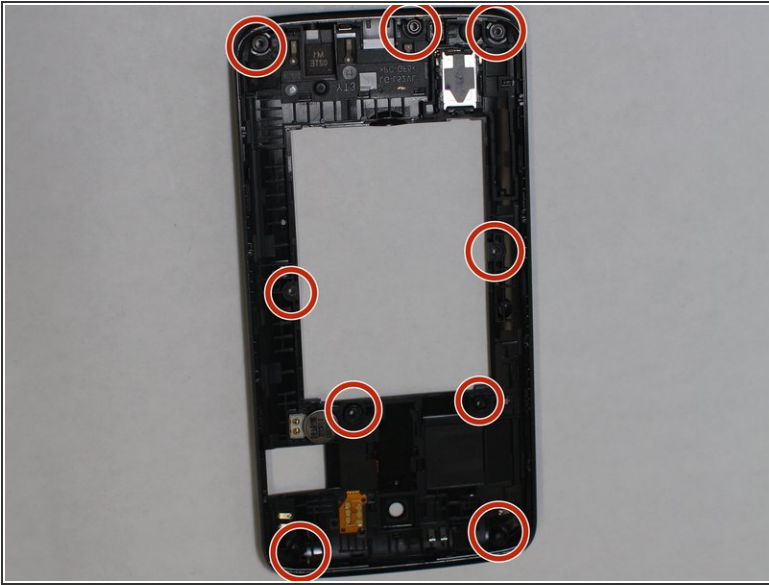
- ❗ Make sure the LG Treasure is turned off.
- Pull off the back cover from the phone using the groove on the bottom right side.

Step 2



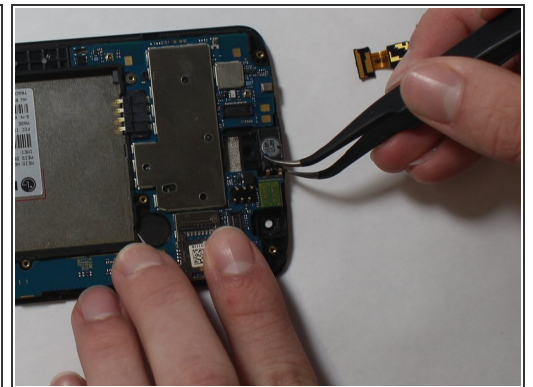
- Remove the battery from the phone by lifting up on the bottom end of the battery.

Step 3 — Display



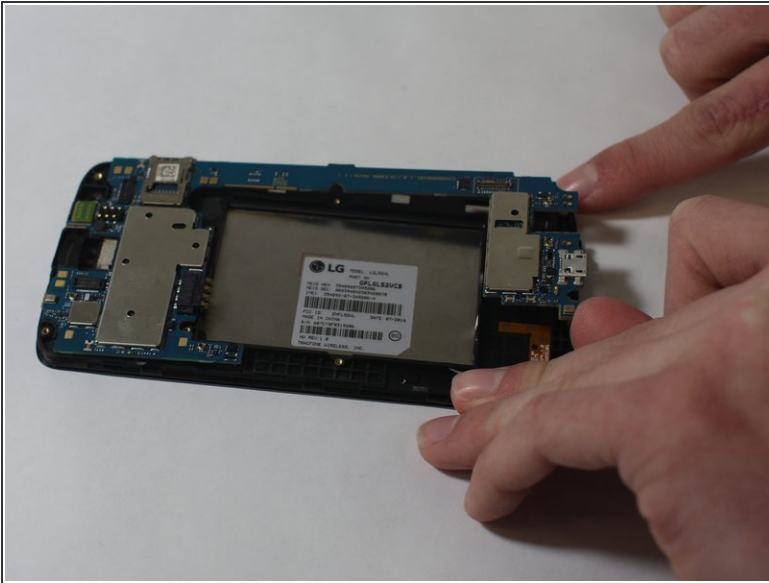
- Remove all 9 of the 3mm Phillips #000 screws from the digitizer.
- Work your way around the edge of the phone, gently prying the digitizer off the phone.

Step 4



- Remove the Front Facing Camera, Rear Facing Camera, and the Display Connector by lifting the gold film-like connectors out of their connections.
- Remove the ear speaker and audio jack by lifting them out of place using the tweezers.

Step 5



- Remove the motherboard from the display screen by lifting it out of place.

To reassemble your device, follow these instructions in reverse order.