



# LG Tribute 5 Display Replacement

How to replace the display on the LG Tribute 5. Model LS675.

Written By: Logan Reid Howell



## INTRODUCTION

This guide will walk you through replacing the display and touch screen on your LG Tribute 5. This can resolve issues such as an unresponsive touch screen, a display that is damaged or does not work, or a cracked glass display. Use caution when handling a cracked display to prevent cuts.



### TOOLS:

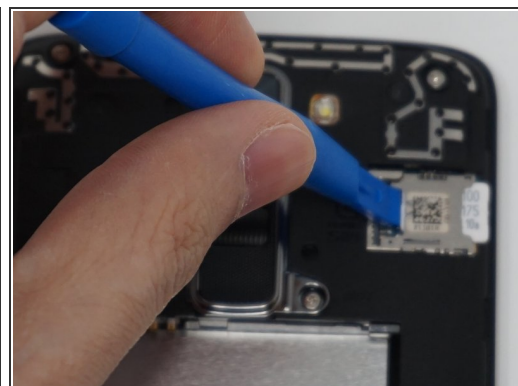
- [iFixit Opening Tools](#) (1)
  - [JIS #00 Screwdriver](#) (1)
-

## Step 1 — Battery



- Using an iFixit opening tool, gently pull outward on the cutout on the bottom left corner of the phone to remove the back cover.

## Step 2



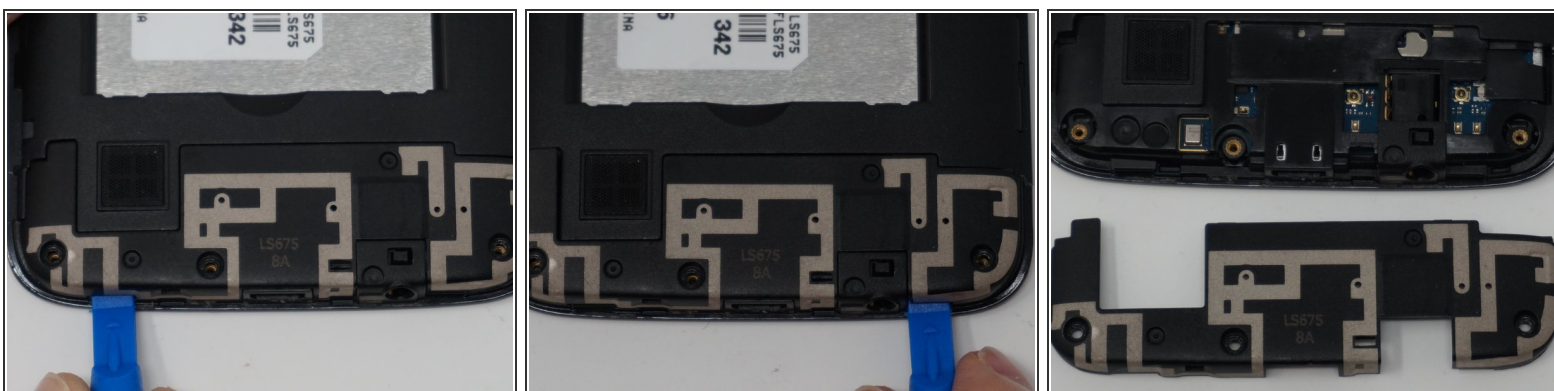
- Gently lift the battery out from the compartment.
- Use an iFixit opening tool to slide out the SD card and nano sim card from the device as shown.

## Step 3 — Display



- Remove the nine 2mm JIS #00 screws from the mid-frame.

## Step 4



- Using an iFixit opening tool, remove the antenna extender located at the bottom.

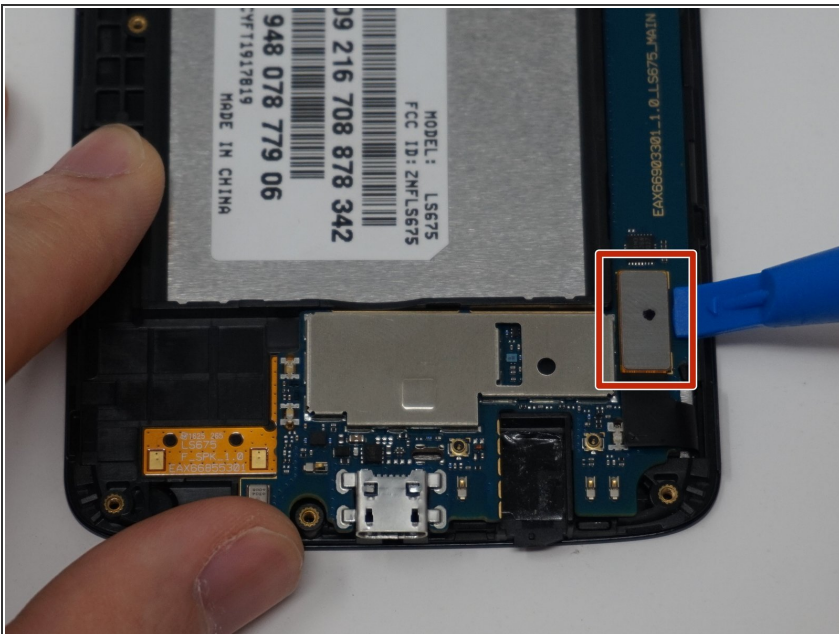
## Step 5



- Gently remove the mid-frame using an iFixit opening tool as shown.

⚠ Avoid applying too much force when separating the mid frame. Too much force can bend or damage the device.

## Step 6



- Disconnect the flex cable from the motherboard with the iFixit opening tool.

## Step 7



- Use an iFixit opening tool to separate the motherboard and the display.

To reassemble your device, follow these instructions in reverse order.