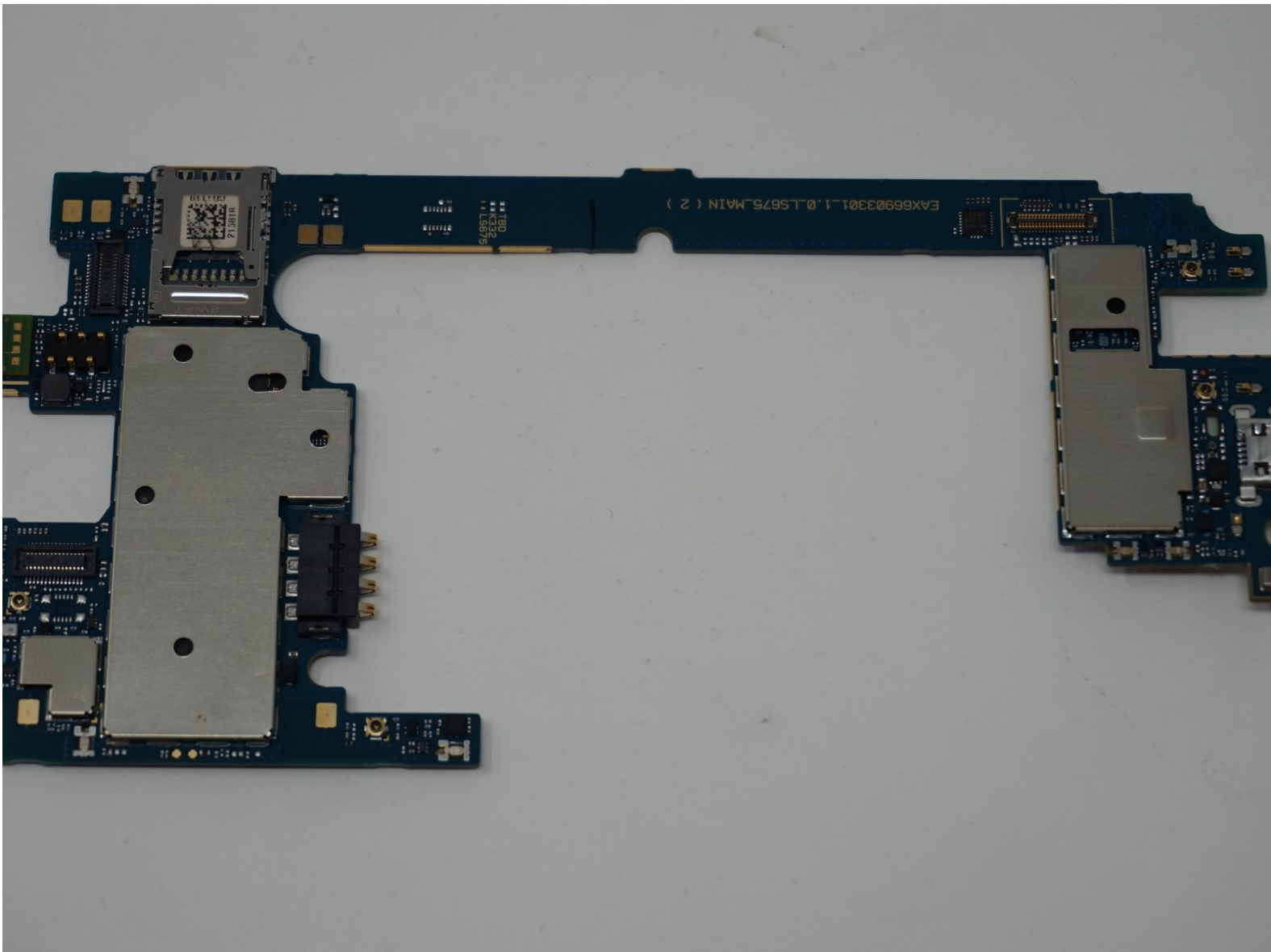




LG Tribute 5 Motherboard Replacement

How to replace the motherboard in your LG Tribute 5, model LS675.

Written By: Renee Dawn Nelson



INTRODUCTION

This guide will teach you how to replace the motherboard in your LG Tribute 5, model LS675. The motherboard is a circuit board that controls all of the phone's components. If your phone is experiencing issues after replacing the battery, you may consider replacing the motherboard.



TOOLS:

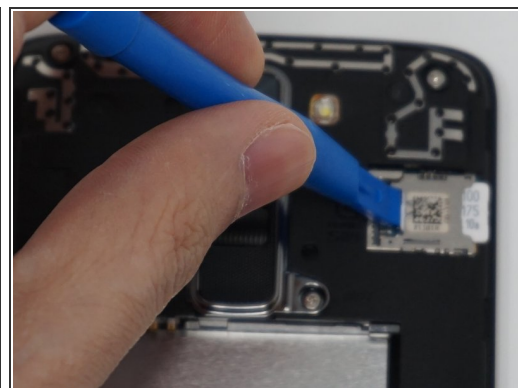
- [iFixit Opening Tools](#) (1)
 - [JIS #00 Screwdriver](#) (1)
-

Step 1 — Battery



- Using an iFixit opening tool, gently pull outward on the cutout on the bottom left corner of the phone to remove the back cover.

Step 2



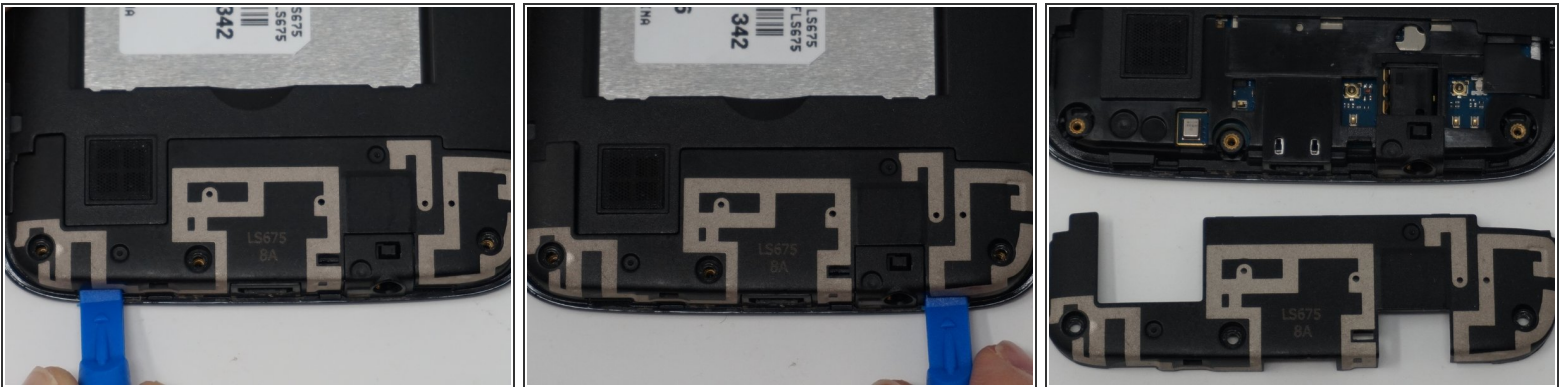
- Gently lift the battery out from the compartment.
- Use an iFixit opening tool to slide out the SD card and nano sim card from the device as shown.

Step 3 — Motherboard



- Remove the nine 2mm JIS #00 screws from the mid-frame.

Step 4




- Using an iFixit opening tool, remove the antenna extender located at the bottom.

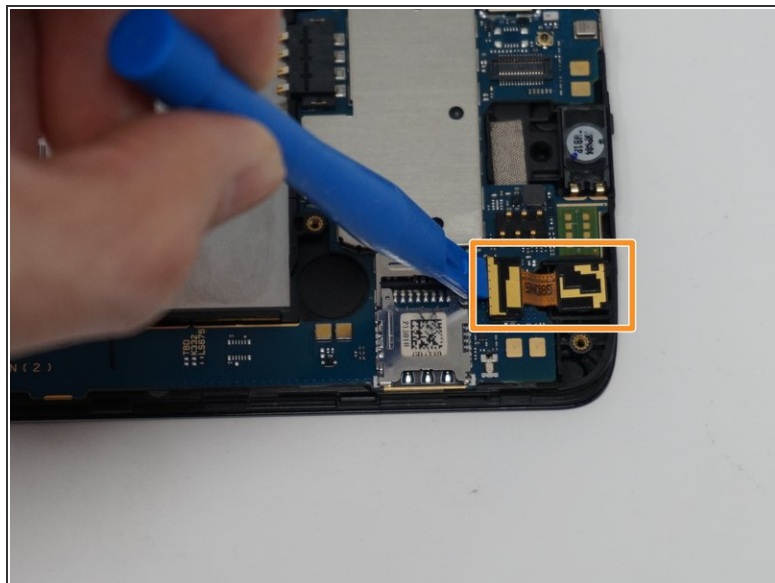
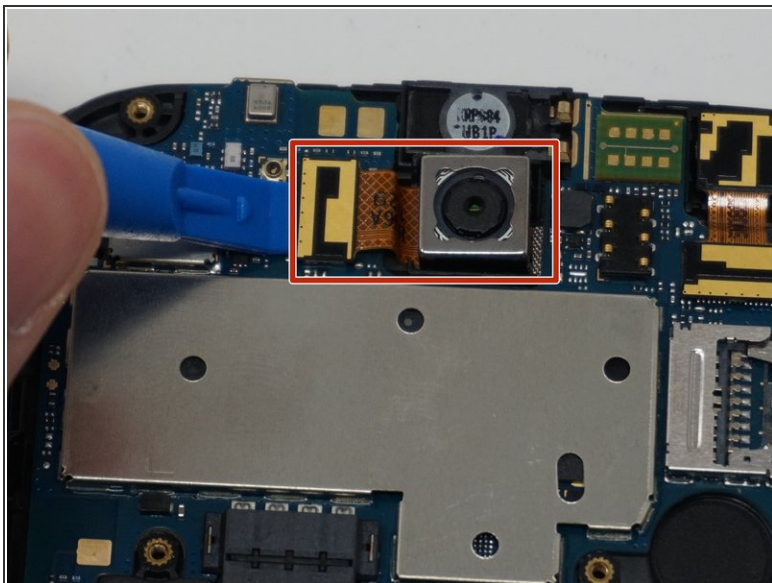
Step 5



- Gently remove the mid-frame using an iFixit opening tool as shown.

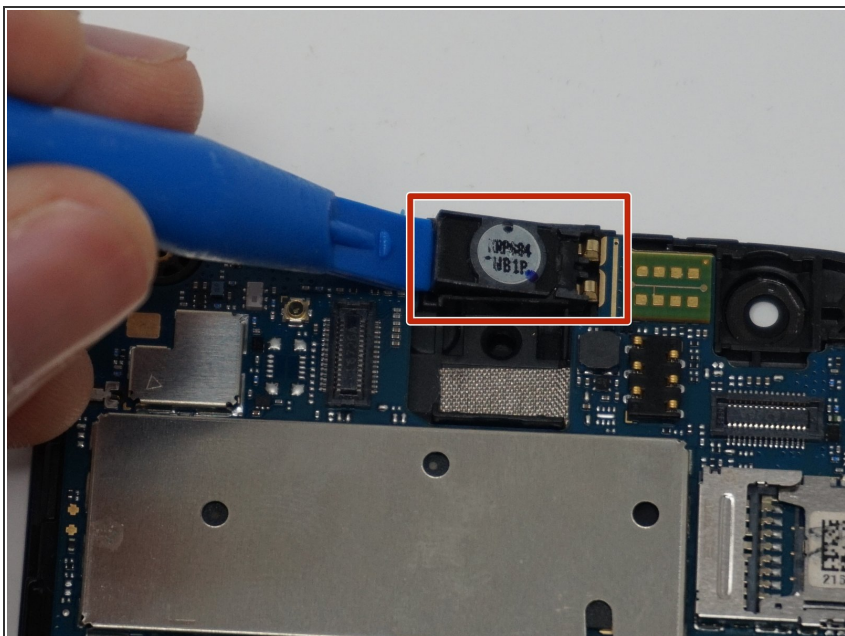
 Avoid applying too much force when separating the mid frame. Too much force can bend or damage the device.

Step 6



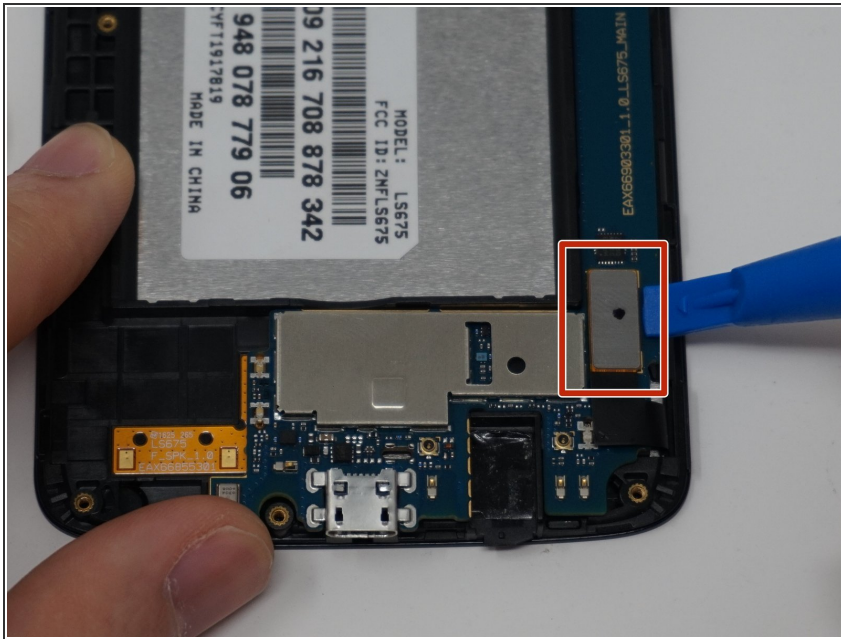
- Using an iFixit opening tool, gently disconnect the rear camera from the top center of the motherboard.
- Remove the front facing camera from the top right corner of the motherboard.

Step 7



- Gently pull the speaker out from its compartment with the iFixit opening tool.

Step 8



- Disconnect the flex cable from the motherboard with the iFixit opening tool.

Step 9



- Gently pull up and remove the motherboard using the iFixit opening tool.

To reassemble your device, follow these instructions in reverse order.