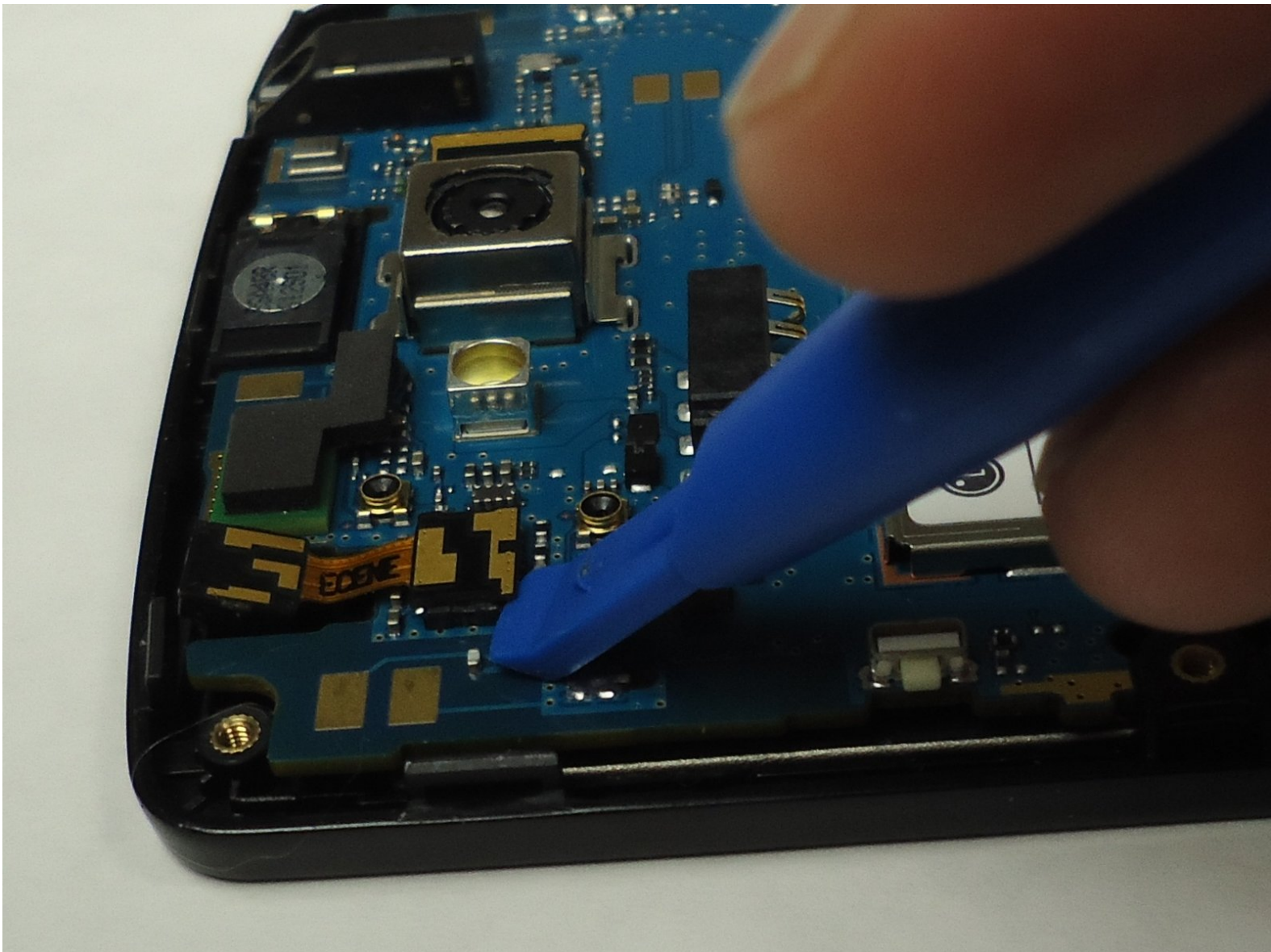




# LG Tribute Front Facing Camera Replacement

If the front facing camera is not working properly, use this guide to replace the camera.

Written By: Marissa Eubank



# INTRODUCTION

This guide will teach you how to properly replace the front facing camera in the phone.



## TOOLS:

- [iFixit Opening Tools](#) (1)
- [Phillips #000 Screwdriver](#) (1)
- [iFixit Opening Picks set of 6](#) (1)



## PARTS:

- [LG Tribute Front Camera](#) (1)

## Step 1 — Battery



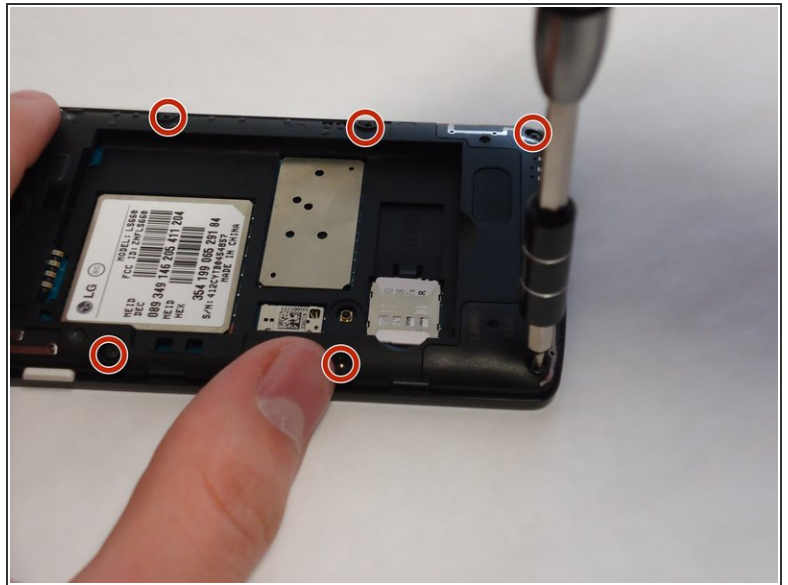
- Use the plastic opening tool to pry off the back cover.

## Step 2



- Lift the battery out of place.
- ★ When replacing the battery, the (+) and (-) symbols must match up with the phone's charging nodes.

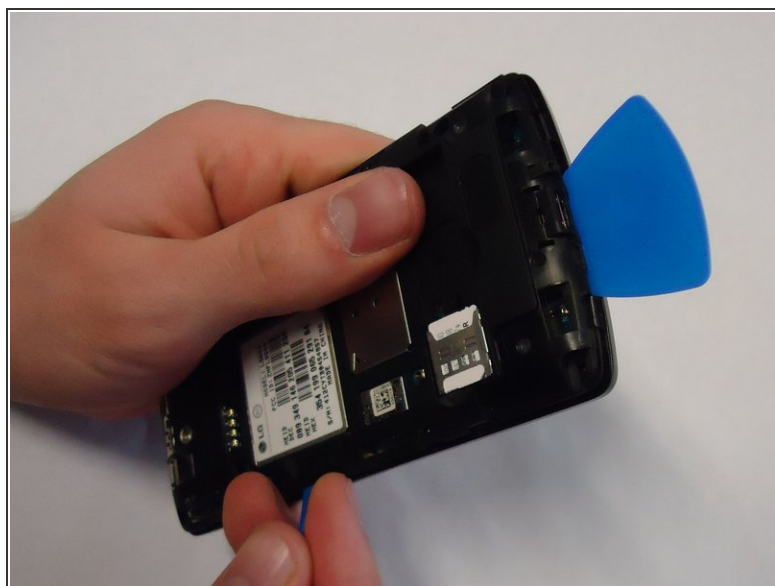
## Step 3 — Mid-panel



- Remove eight 4mm screws using a Phillips head 000 screwdriver (PH000).

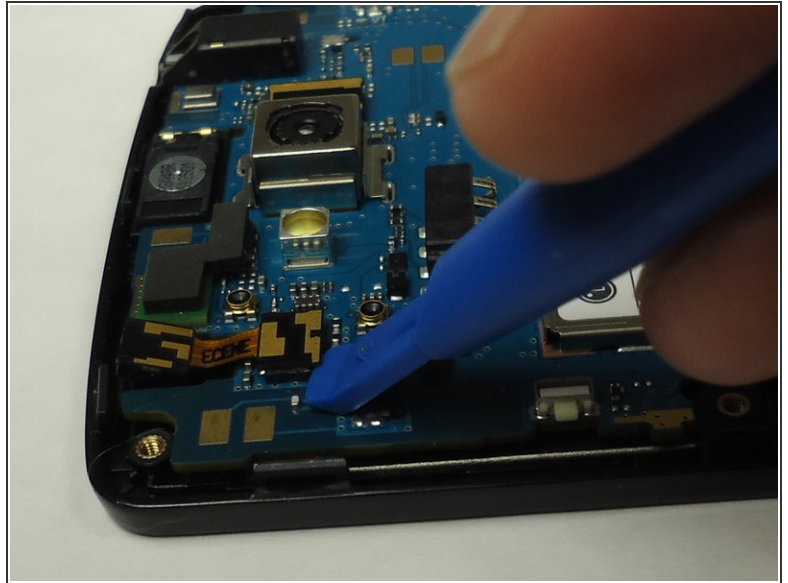
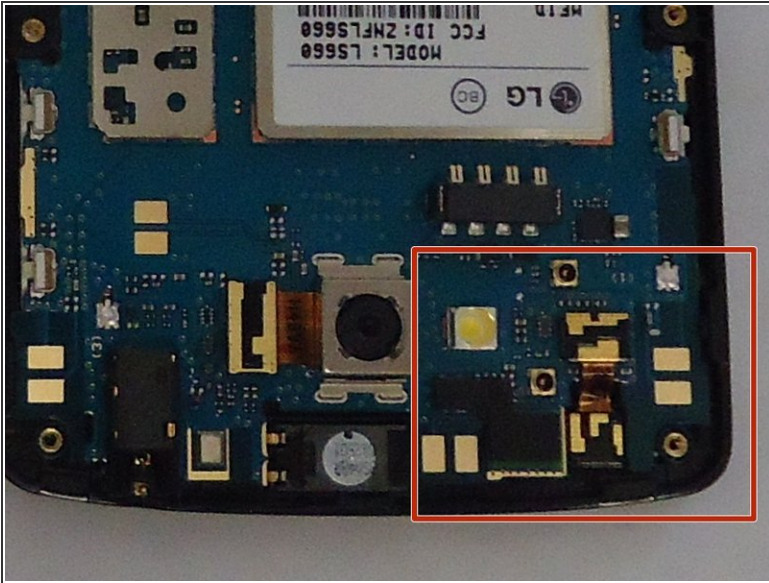


## Step 4



- Use a plastic opening tool to loosen the tabs around the edge of the phone.
- ⓘ Inserting a thin piece of plastic will help prevent opened tabs from locking back into place.
- ⚠ This step can be frustrating, but requires patience. Avoid the temptation to pry the panel loose. Using excessive force may break the delicate tabs.

## Step 5 — Front Facing Camera



- Use the plastic opening tool to carefully pry the front-facing camera from the motherboard.

To reassemble your device, follow these instructions in reverse order.