



LG Tribute HD Button Replacement

A guide showing the replacement of the LG Tribute HD LS676 volume and power buttons.

Written By: Dhruv Patel



INTRODUCTION

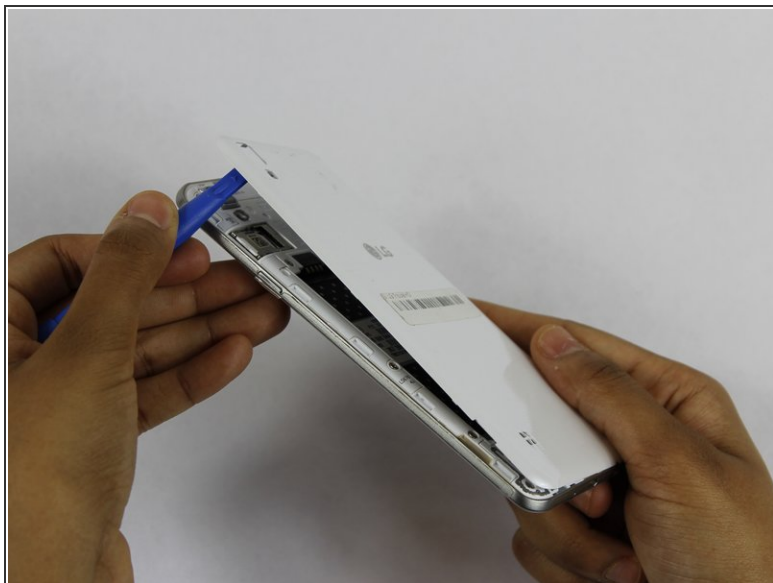
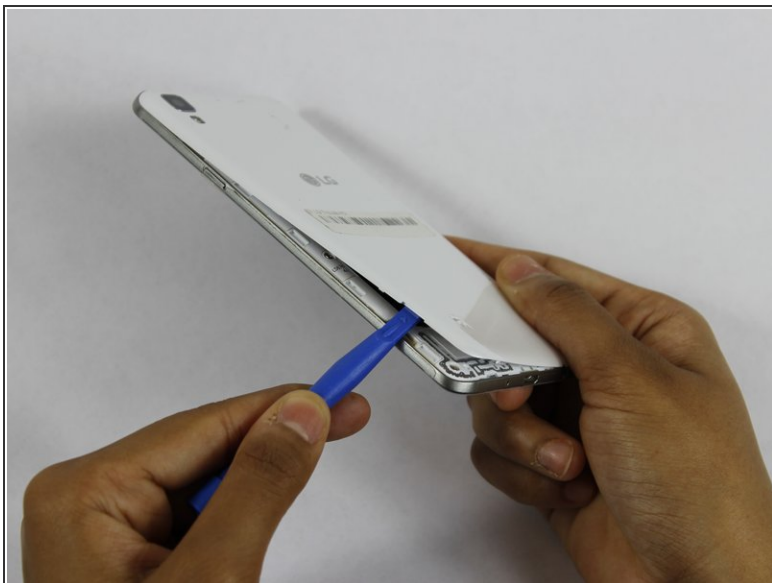
In this guide we will teach you how to properly remove and replace the LG Tribute HD's volume and power buttons



TOOLS:

- [iFixit Opening Tools](#) (1)
 - [JIS #00 Screwdriver](#) (1)
-

Step 1 — Battery and SD Card



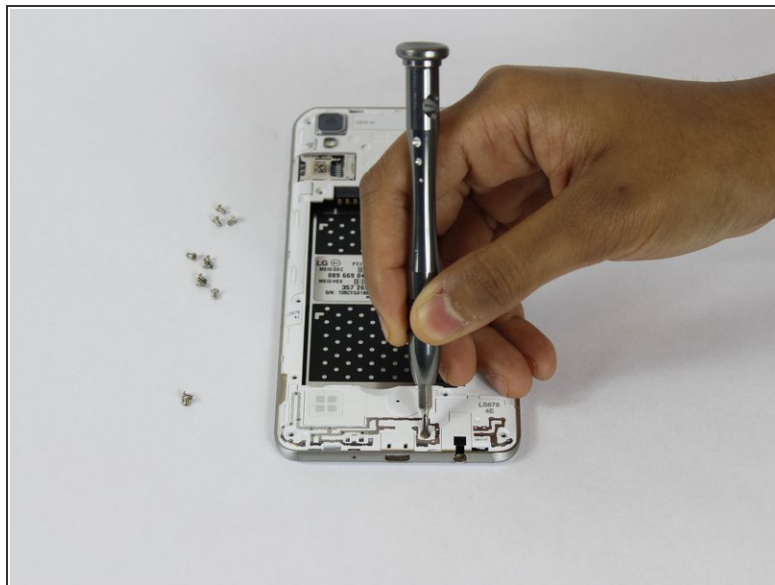
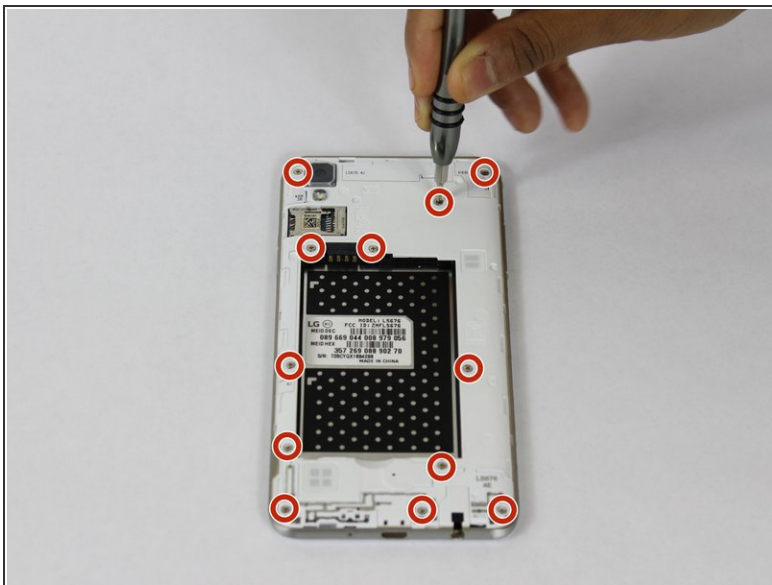
- Insert a fingernail, or plastic opening tool, into the cutout on the back cover and pry outward to remove.

Step 2



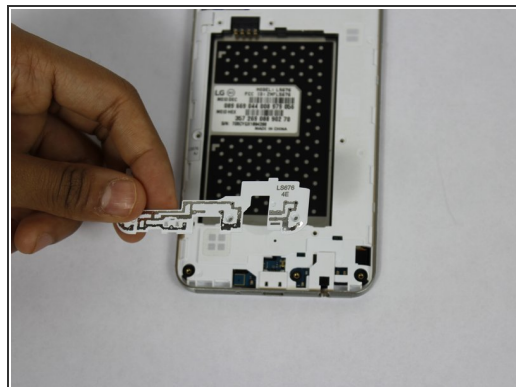
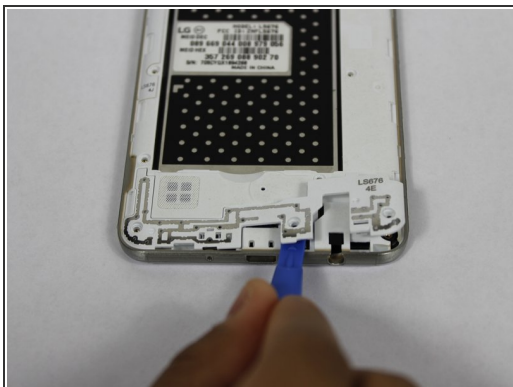
- Pull the battery out of the phone.
- Remove the SD Card by sliding the card out as shown.

Step 3 — Volume & Power Buttons



- Remove the twelve 2mm JIS #00 screws from the mid-frame.

Step 4



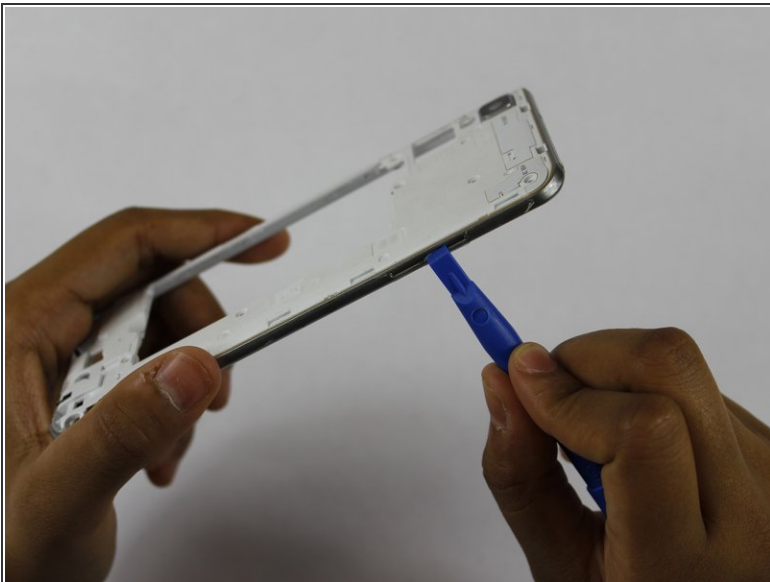
- Using a plastic opening tool, remove the antenna extender from the mid-frame.

Step 5



- Using your fingers, remove the mid-frame.

Step 6



- Use a plastic opening tool to remove the buttons by pushing them in until they pop through.

To reassemble your device, follow these instructions in reverse order.