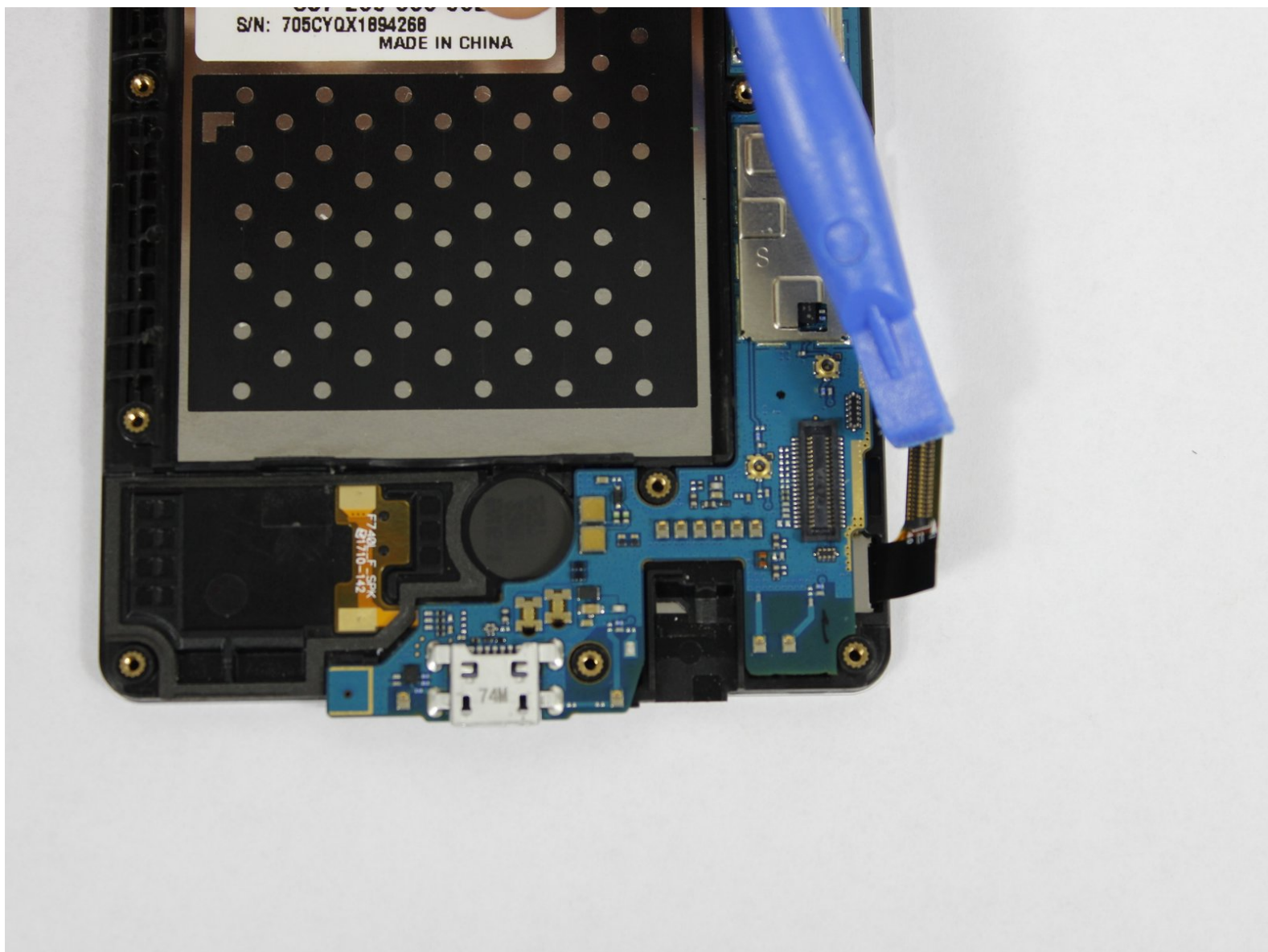




# LG Tribute HD Display Replacement

A guide for replacing the LCD screen and touch digitizer with frame of a LG Tribute HD LS676 due to cracked screen or unresponsive touchscreen.

Written By: Aalia Mohammed



## INTRODUCTION

This guide will teach you how to properly replace the LCD screen and touch digitizer with frame. Precaution should be taken if handling a cracked screen to avoid cuts from broken glass. This repair may be needed if the screen is unresponsive to touch or the screen has been damaged or cracked.



### TOOLS:

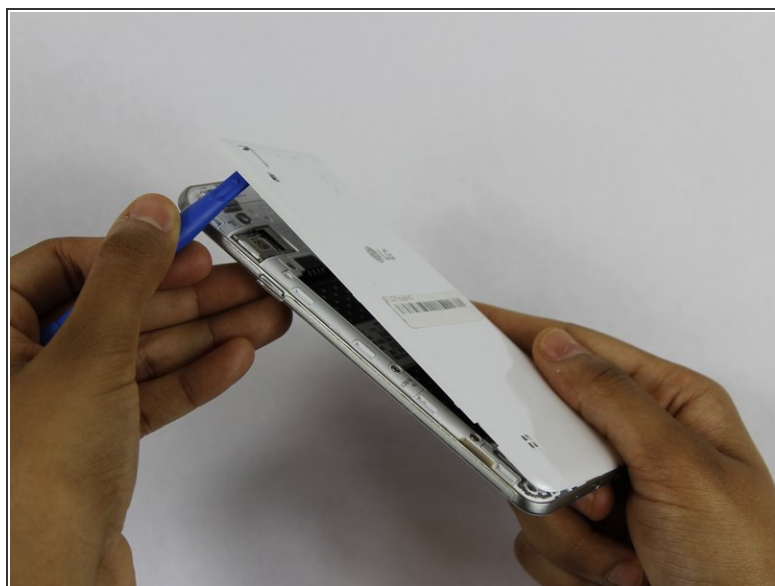
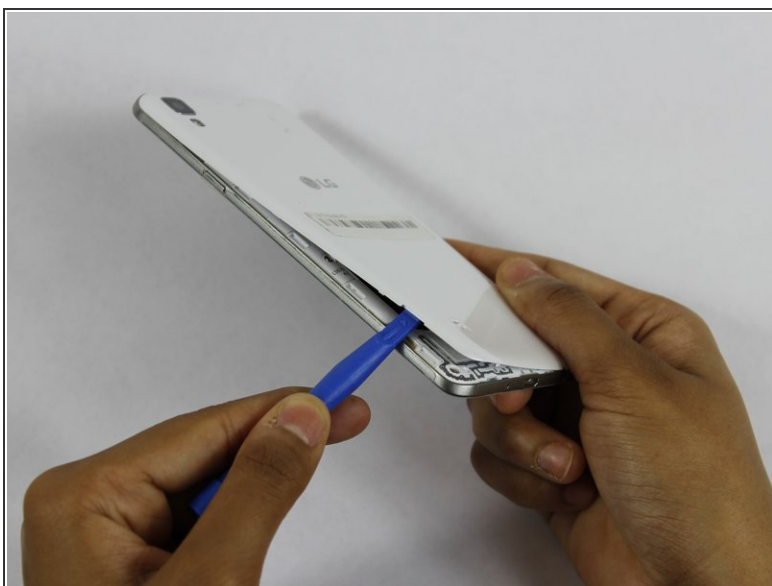
- [iFixit Opening Tools](#) (1)
- [JIS #00 Screwdriver](#) (1)



### PARTS:

- [LG Tribute HD Screen](#) (1)

## Step 1 — Battery and SD Card



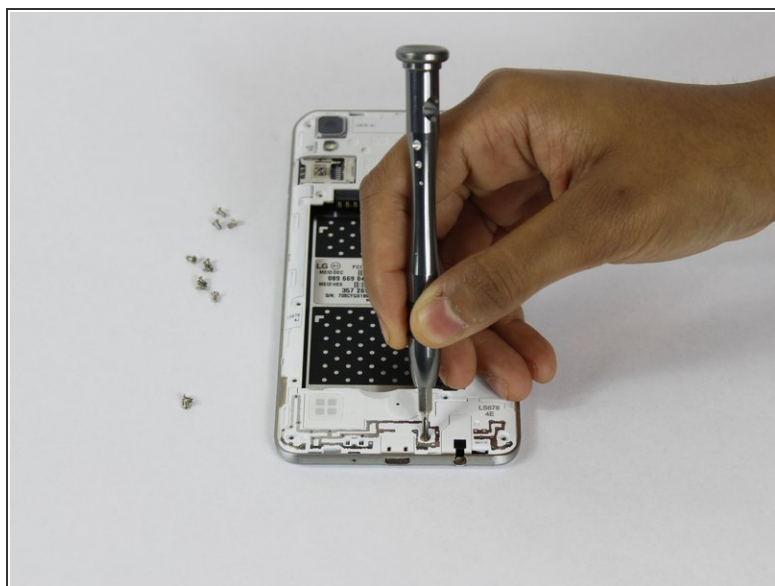
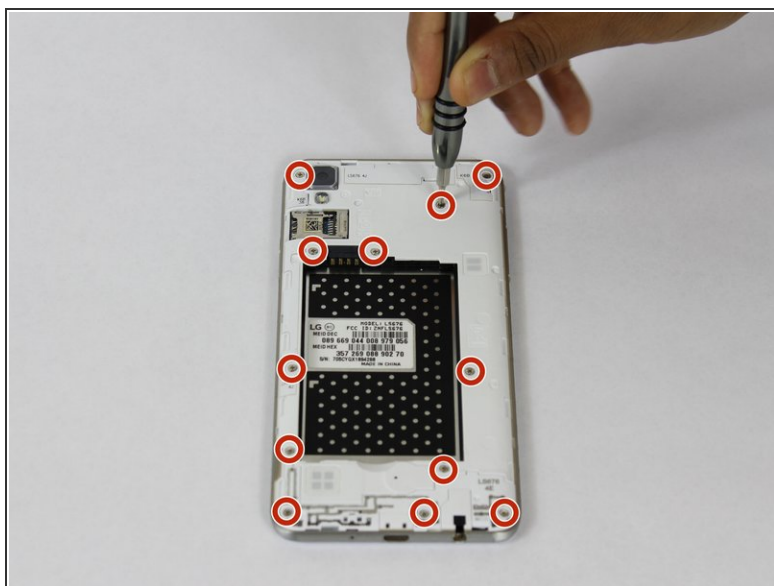
- Insert a fingernail, or plastic opening tool, into the cutout on the back cover and pry outward to remove.

## Step 2



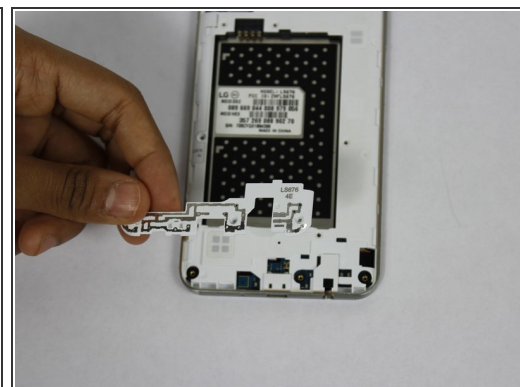
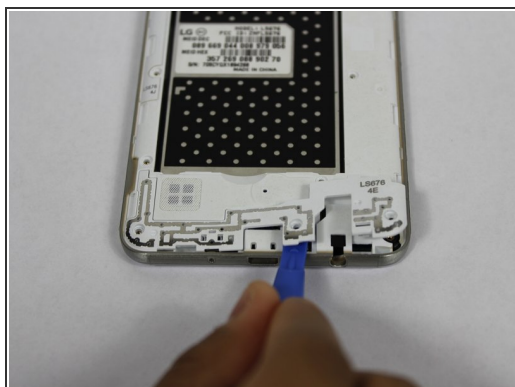
- Pull the battery out of the phone.
- Remove the SD Card by sliding the card out as shown.

## Step 3 — Flex Cable



- Remove the twelve 2mm JIS #00 screws from the mid-frame.

## Step 4



- Using a plastic opening tool, remove the antenna extender from the bottom.

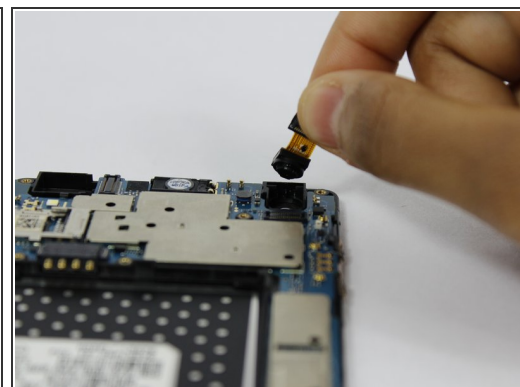
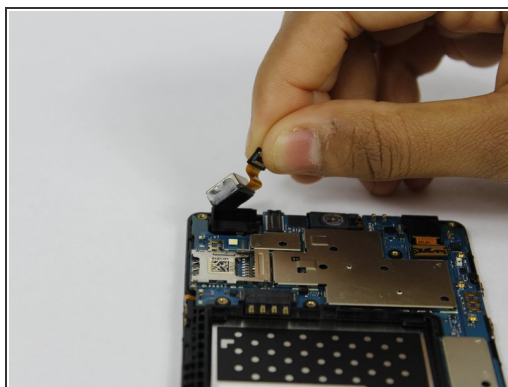
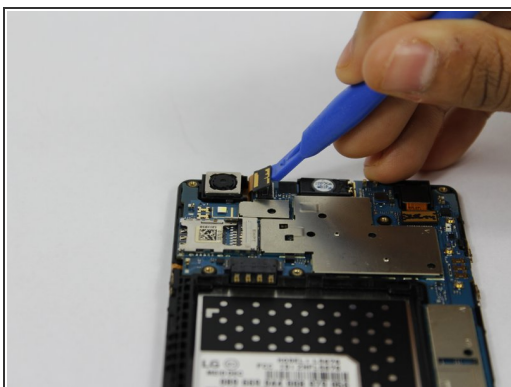


## Step 5



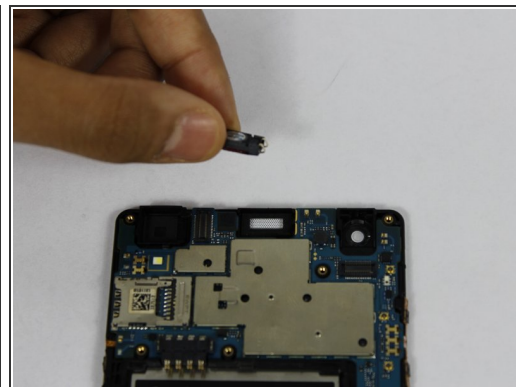
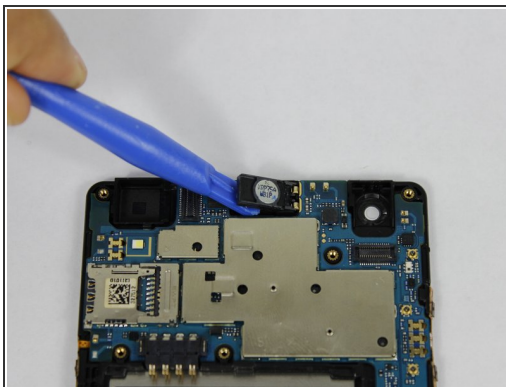
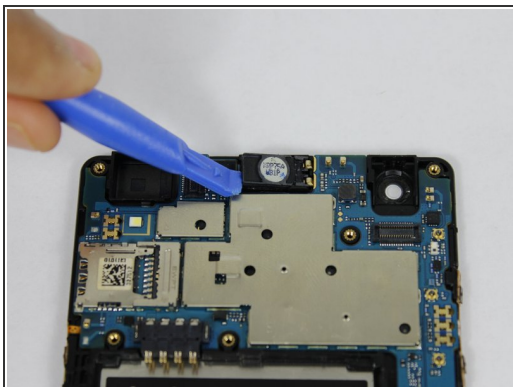
- Using your fingers, remove the mid-frame.

## Step 6



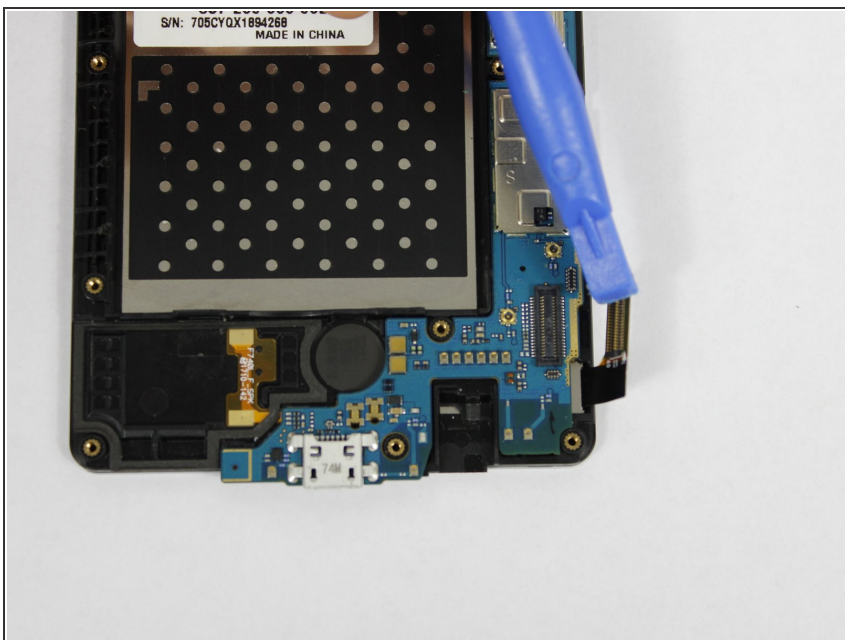
- Use a plastic opening tool to disconnect the front and rear cameras from the motherboard.
- Remove the cameras from the phone.

## Step 7



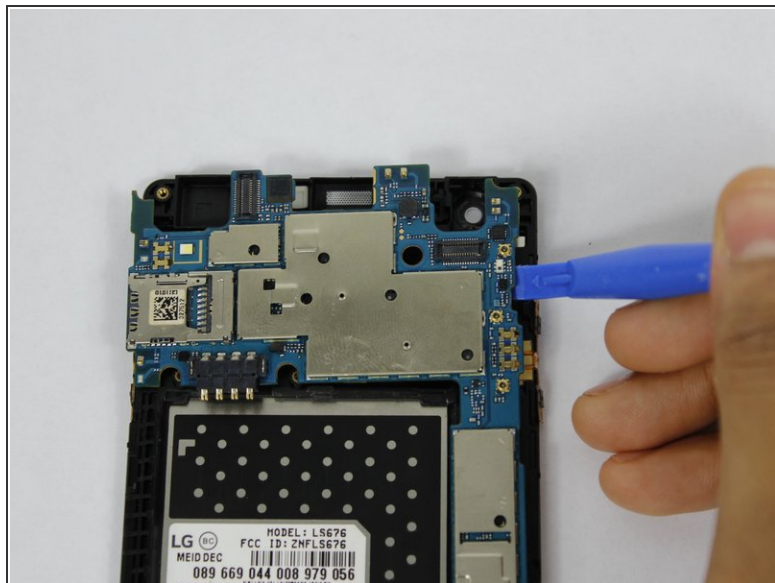
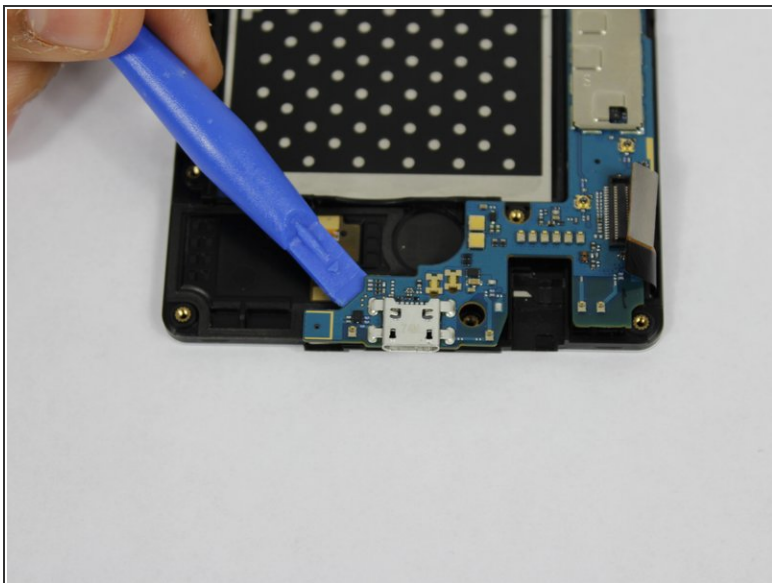
- Using a plastic opening tool, pry up the front facing speaker and remove it from the phone.

## Step 8



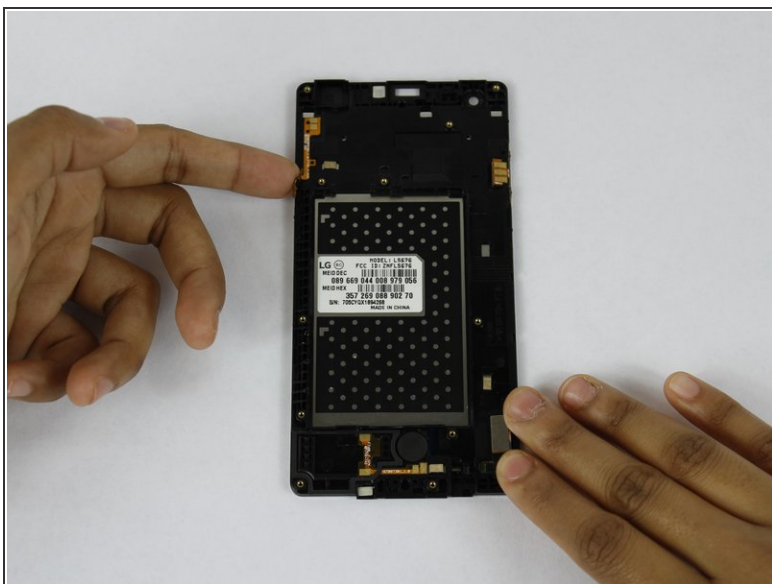
- Disconnect the LCD from the motherboard with a plastic opening tool.

## Step 9



- Use a plastic opening tool to pry up the motherboard from the display housing.
- Remove the motherboard from the phone.

## Step 10



- Use your fingers to remove the flex cables from the phone.

To reassemble your device, follow these instructions in reverse order.