



# LG Tribute HD Flex Cable Replacement

A guide showing how to remove and replace the flex cable in the LG Tribute HD LS676.

Written By: Dhruv Patel



## INTRODUCTION

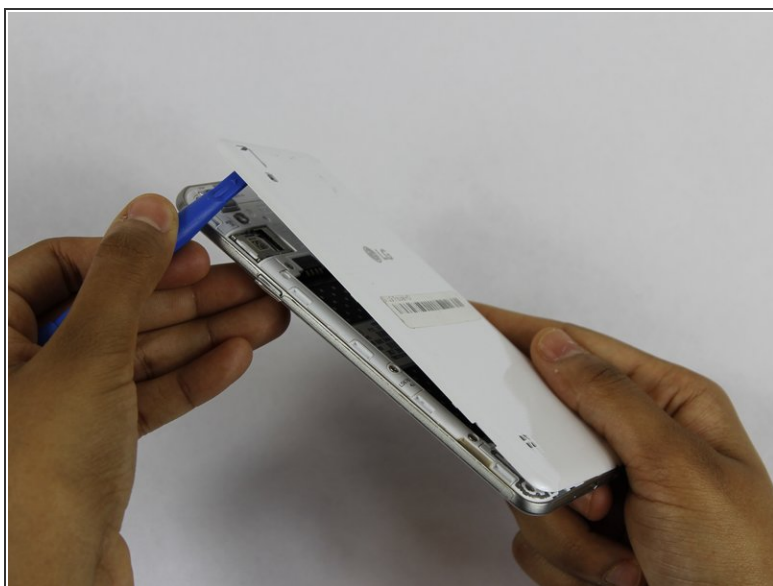
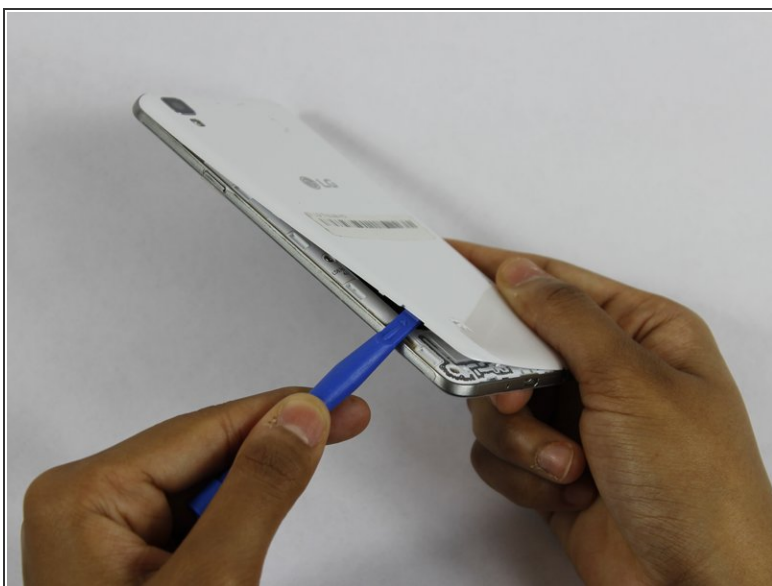
In this guide we will teach you how to properly remove and replace the flex cable in the LG Tribute HD LS676. The flex cable or cable ribbon is a small delicate cable that is connected to the motherboard. It should be handled cautiously since it can be easily damaged by an applied force.

---

### TOOLS:

- [iFixit Opening Tools](#) (1)
  - [JIS #00 Screwdriver](#) (1)
-

## Step 1 — Battery and SD Card



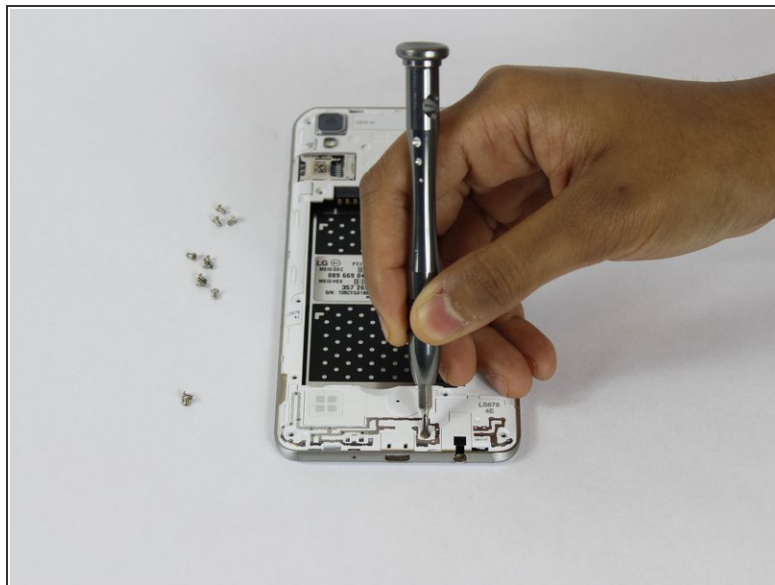
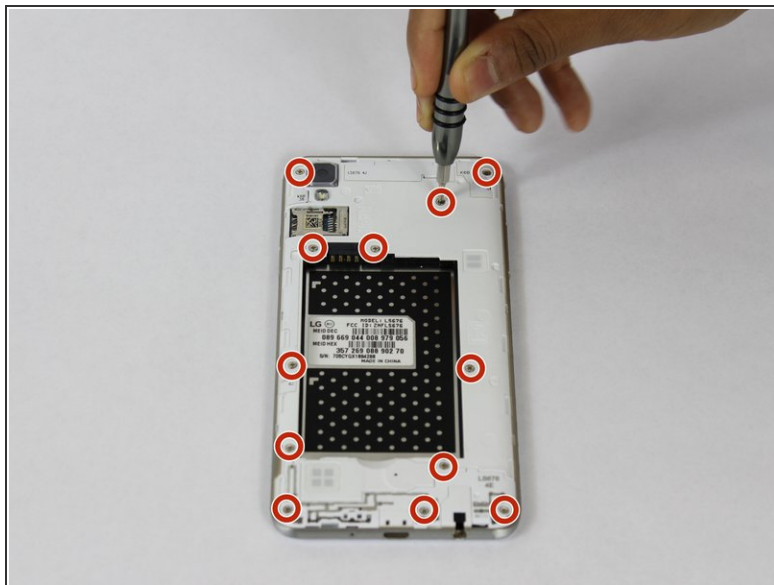
- Insert a fingernail, or plastic opening tool, into the cutout on the back cover and pry outward to remove.

## Step 2



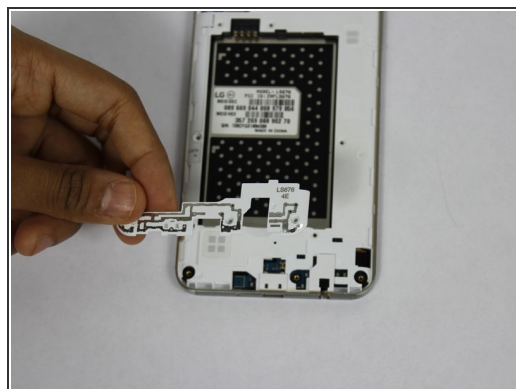
- Pull the battery out of the phone.
- Remove the SD Card by sliding the card out as shown.

## Step 3 — Flex Cable



- Remove the twelve 2mm JIS #00 screws from the mid-frame.

## Step 4



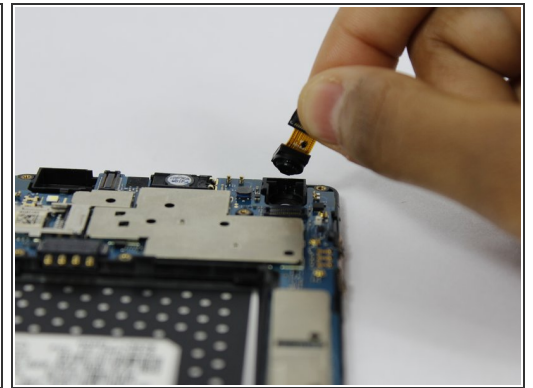
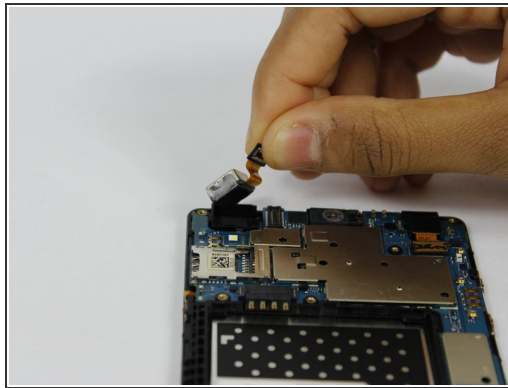
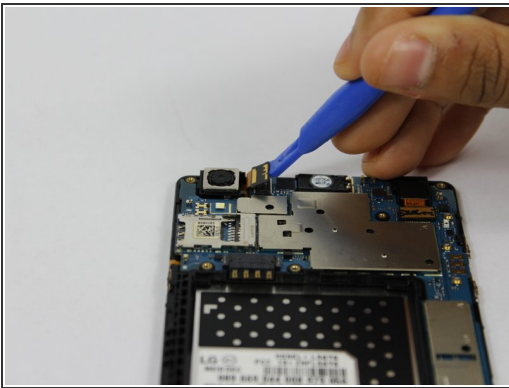
- Using a plastic opening tool, remove the antenna extender from the bottom.

## Step 5



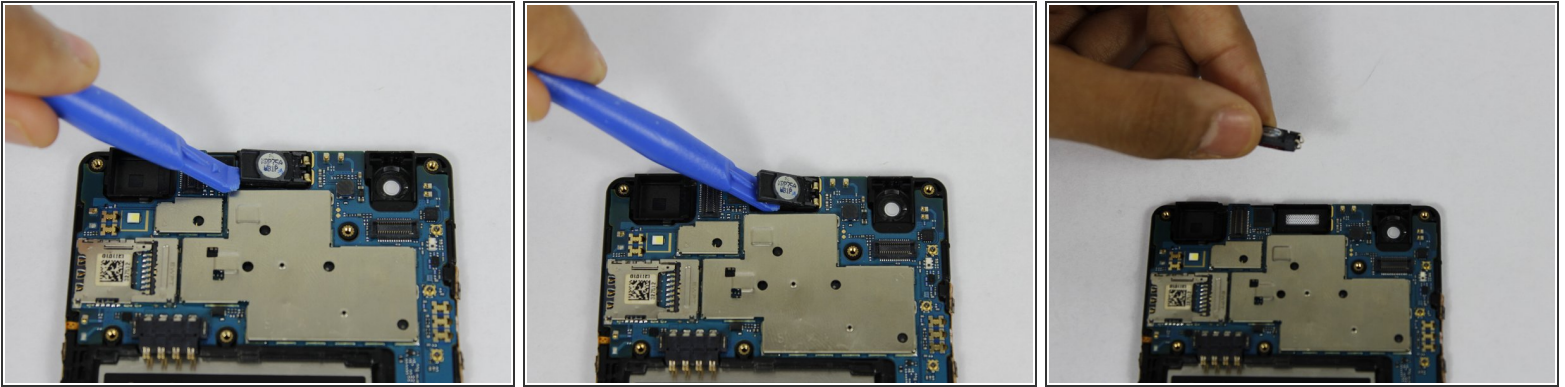
- Using your fingers, remove the mid-frame.

## Step 6



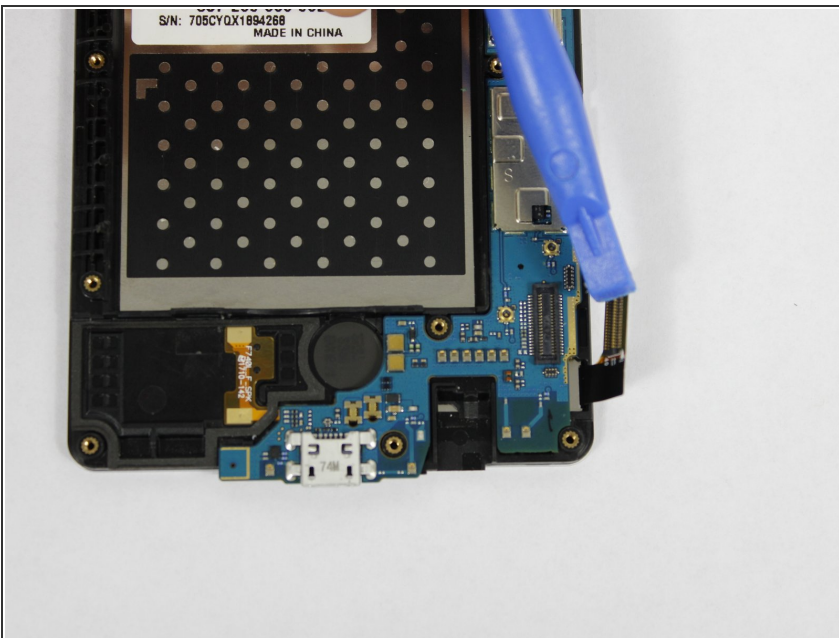
- Use a plastic opening tool to disconnect the front and rear cameras from the motherboard.
- Remove the cameras from the phone.

## Step 7



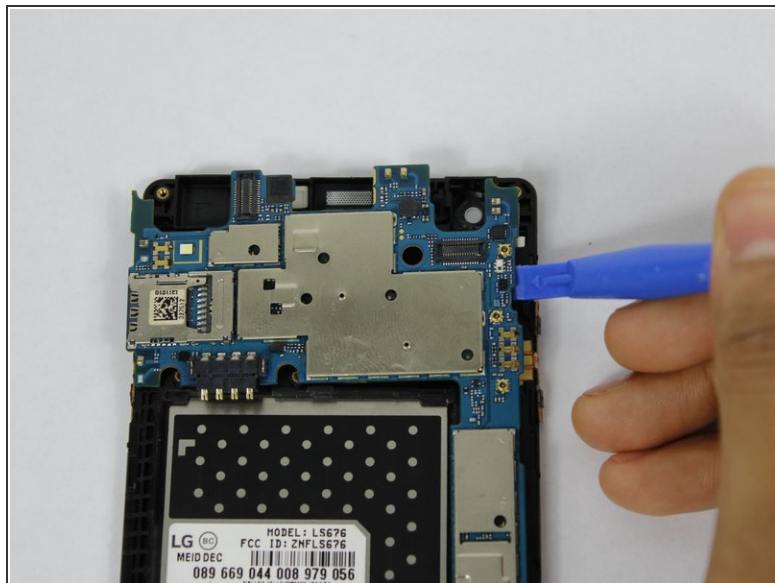
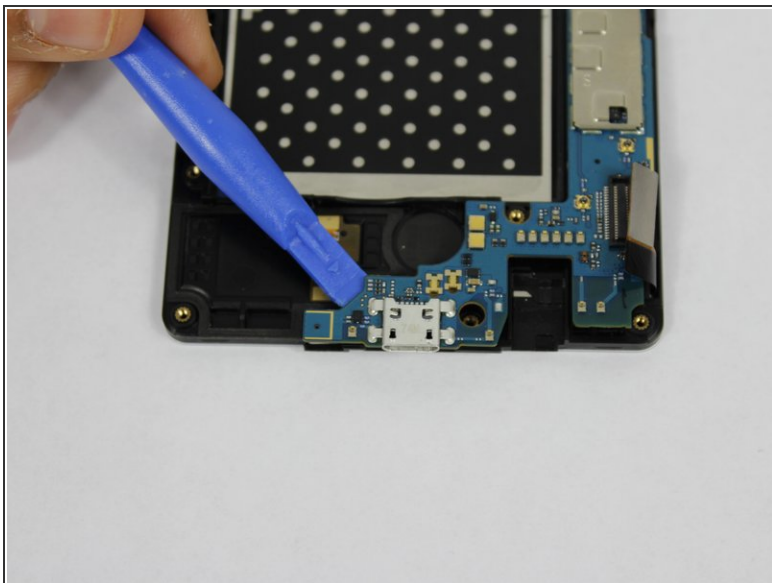
- Using a plastic opening tool, pry up the front facing speaker and remove it from the phone.

## Step 8



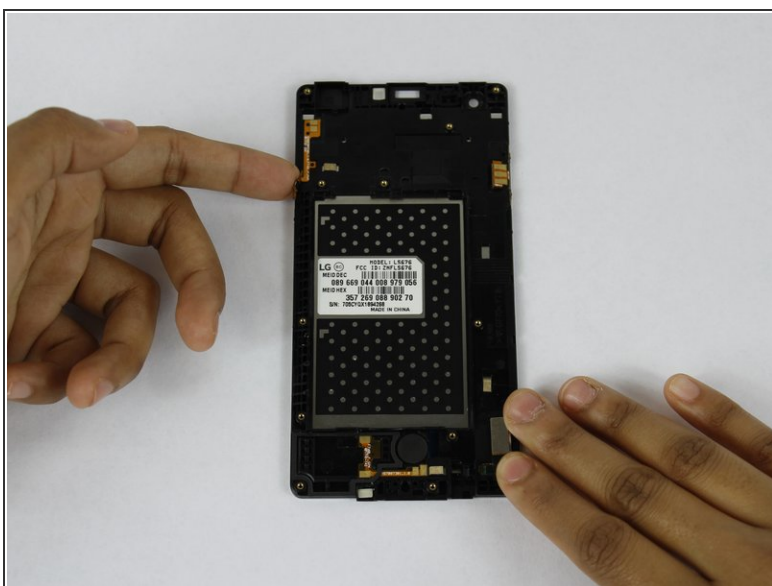
- Disconnect the LCD from the motherboard with a plastic opening tool.

## Step 9



- Use a plastic opening tool to pry up the motherboard from the display housing.
- Remove the motherboard from the phone.

## Step 10



- Use your fingers to remove the flex cables from the phone.

To reassemble your device, follow these instructions in reverse order.