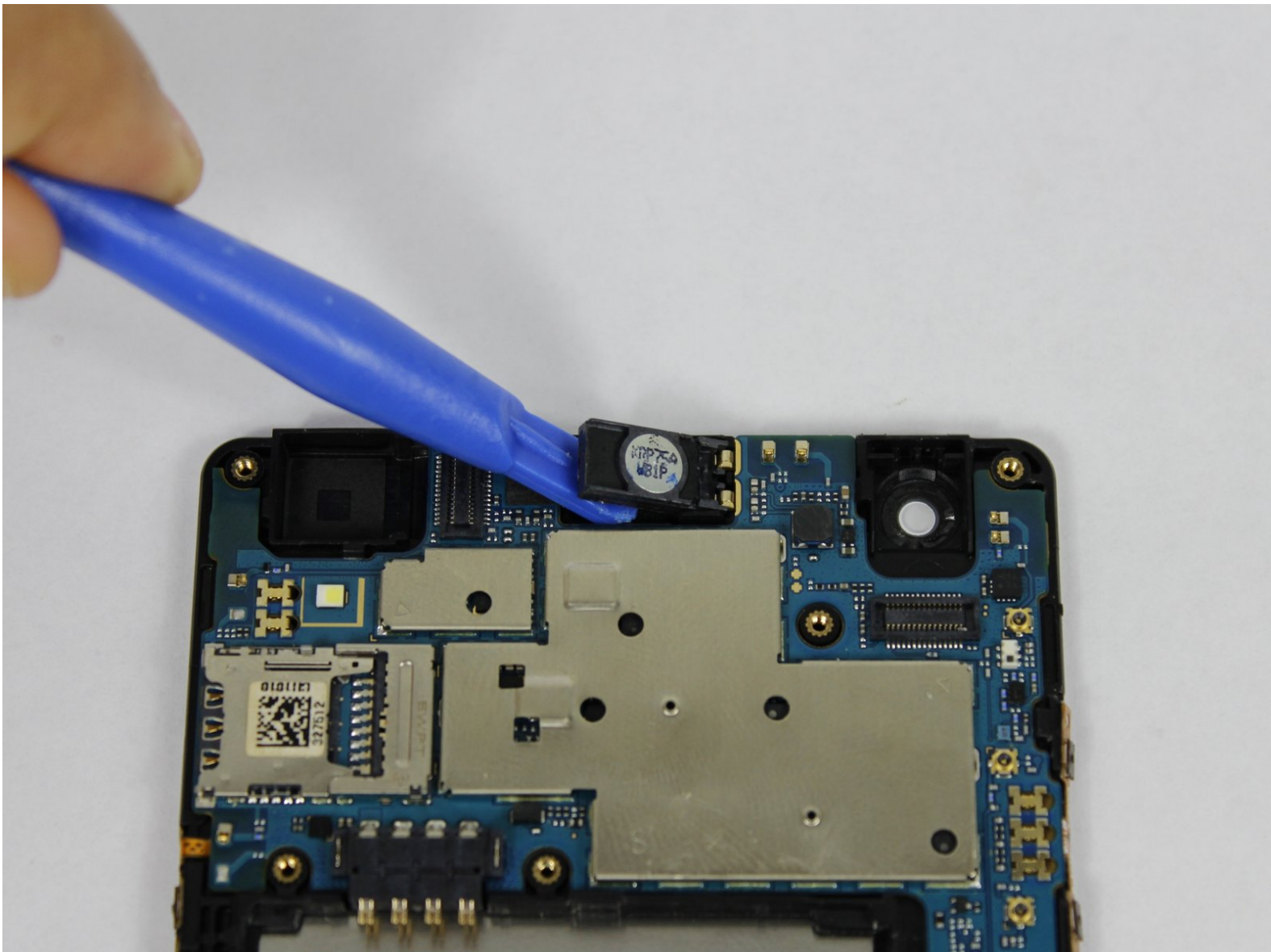




# LG Tribute HD Front Speaker Replacement

A guide showing the replacement of the front facing speaker in the LG Tribute HD LS676.

Written By: Jerry Koenig



---

## INTRODUCTION

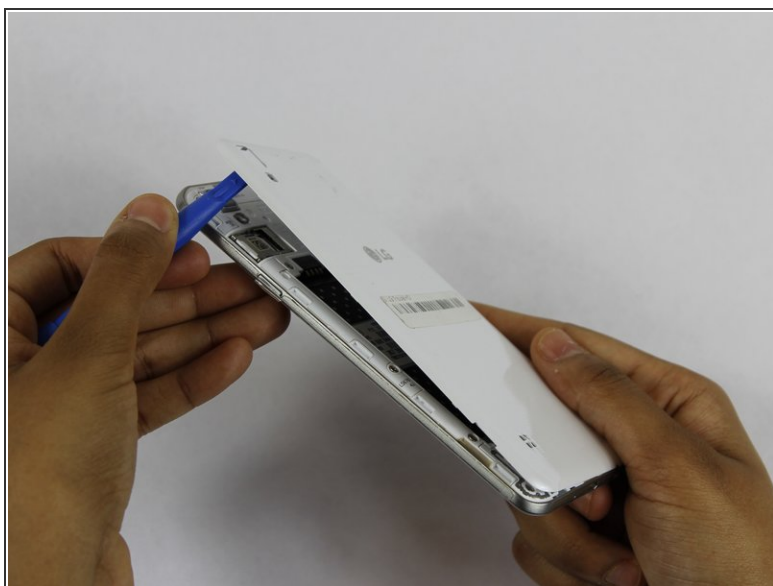
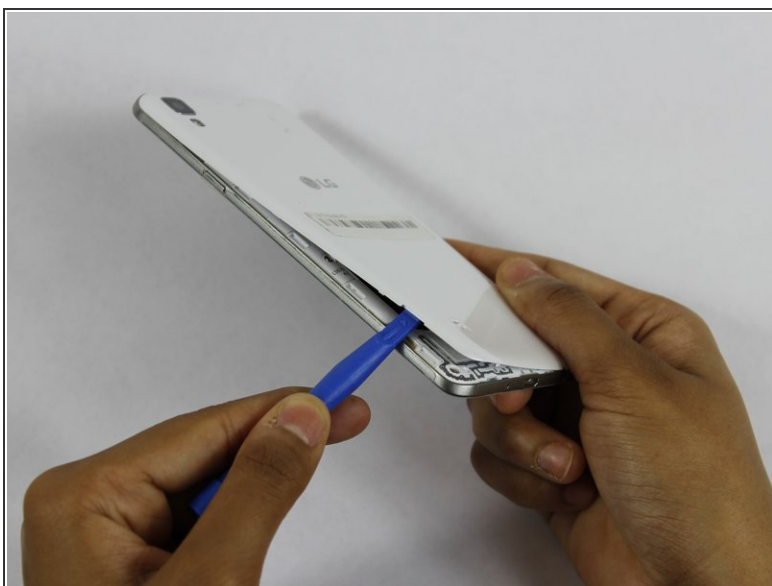
This guide will teach you how to properly replace the front facing speaker in the LG Tribute HD LS676.



### TOOLS:

- [iFixit Opening Tools](#) (1)
  - [JIS #00 Screwdriver](#) (1)
-

## Step 1 — Battery and SD Card



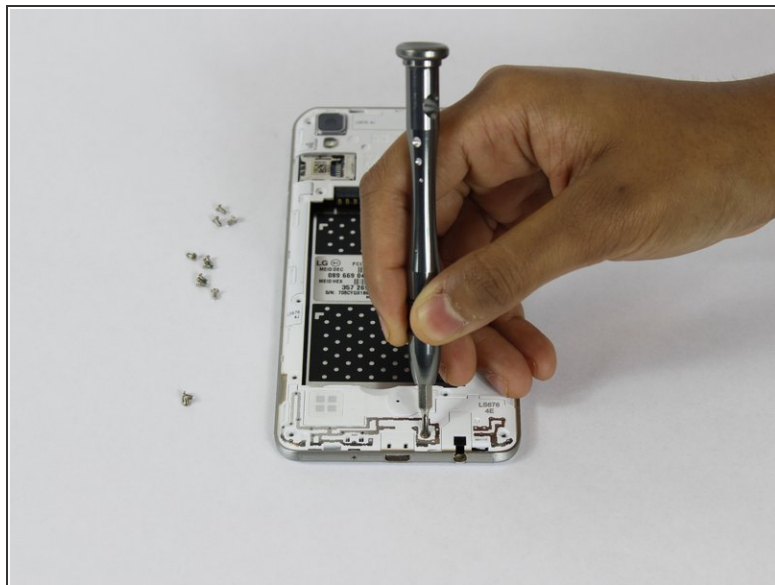
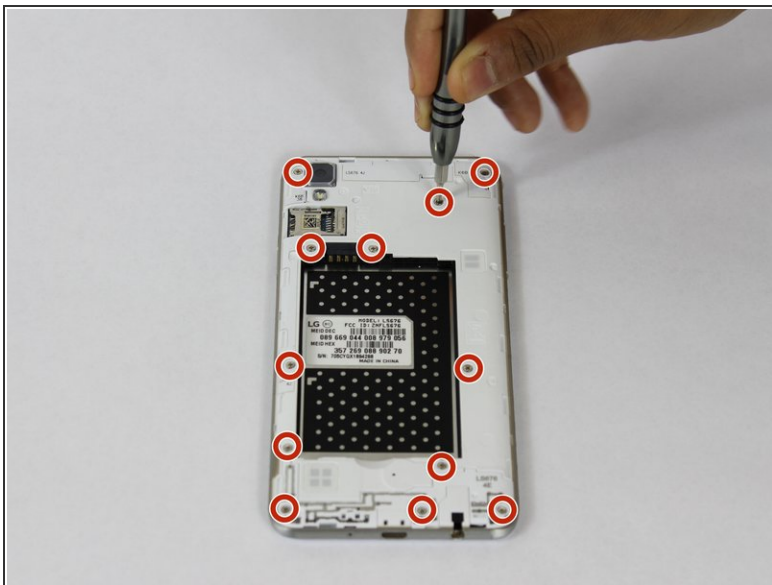
- Insert a fingernail, or plastic opening tool, into the cutout on the back cover and pry outward to remove.

## Step 2



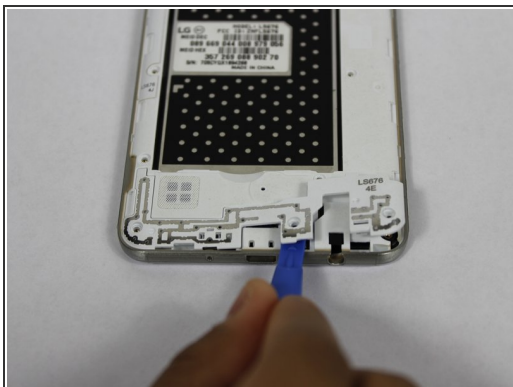
- Pull the battery out of the phone.
- Remove the SD Card by sliding the card out as shown.

## Step 3 — Front Speaker



- Remove the twelve 2mm JIS #00 screws from the mid-frame.

## Step 4



- Using a plastic opening tool, remove the antenna extender from the mid-frame.

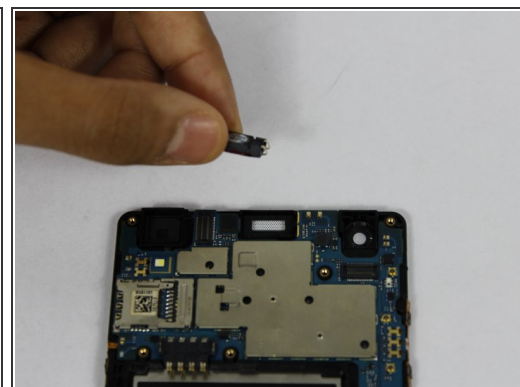
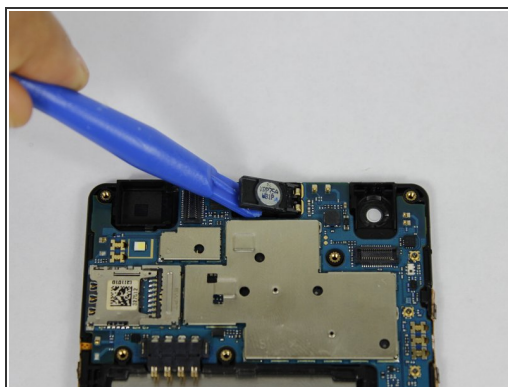
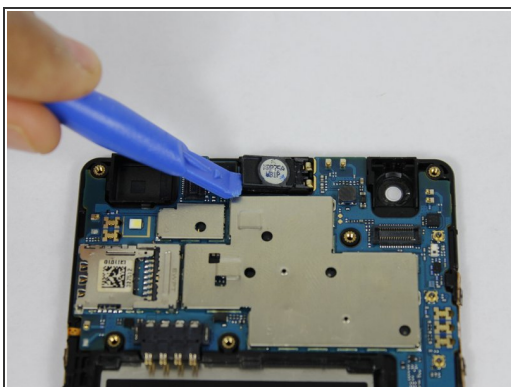


## Step 5



- Using your fingers, remove mid-frame.

## Step 6



- Using a plastic opening tool, pry up the front facing speaker and remove it from the phone.

To reassemble your device, follow these instructions in reverse order.