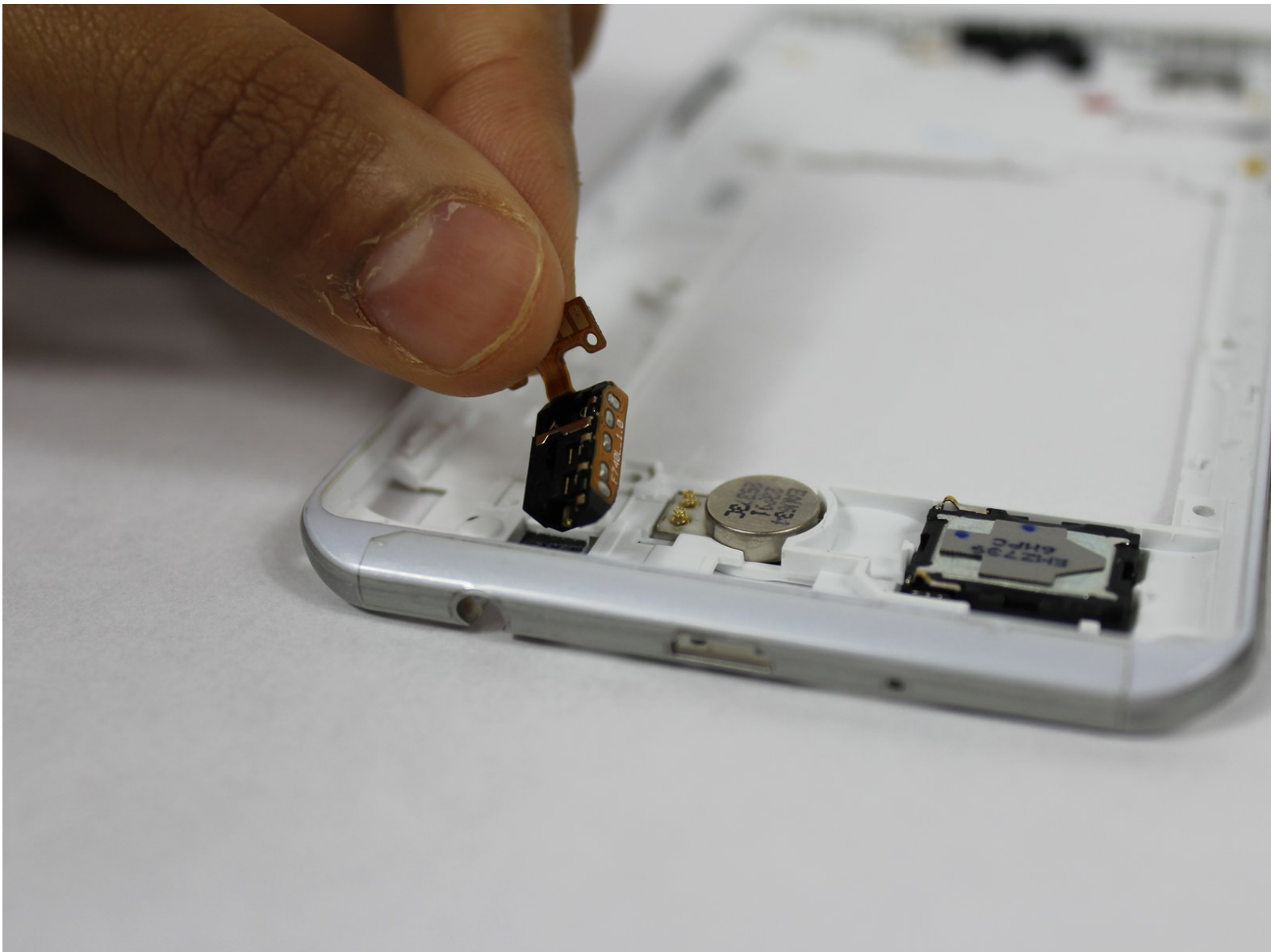




# LG Tribute HD Headphone Jack Replacement

How to remove and replace the headphone jack in the LG Tribute HD LS676.

Written By: Jerry Koenig



---

## INTRODUCTION

This guide will teach you how to properly replace the headphones jack in the LG Tribute HD LS676.

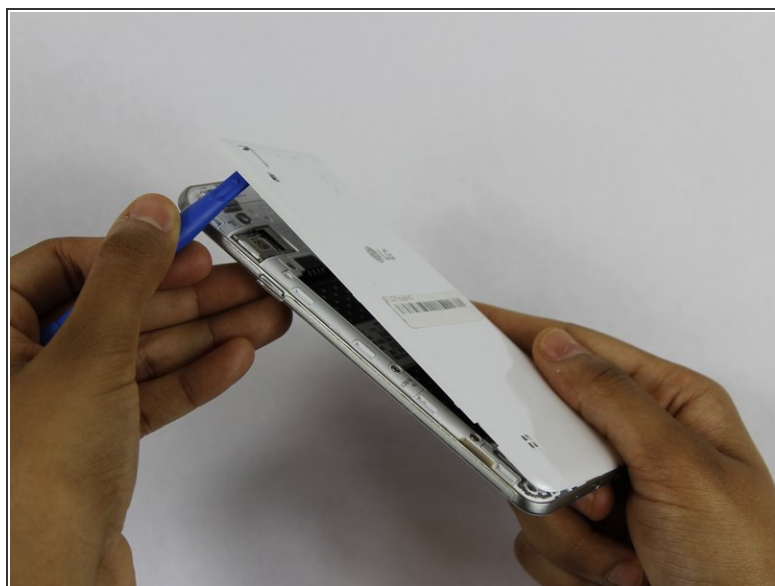
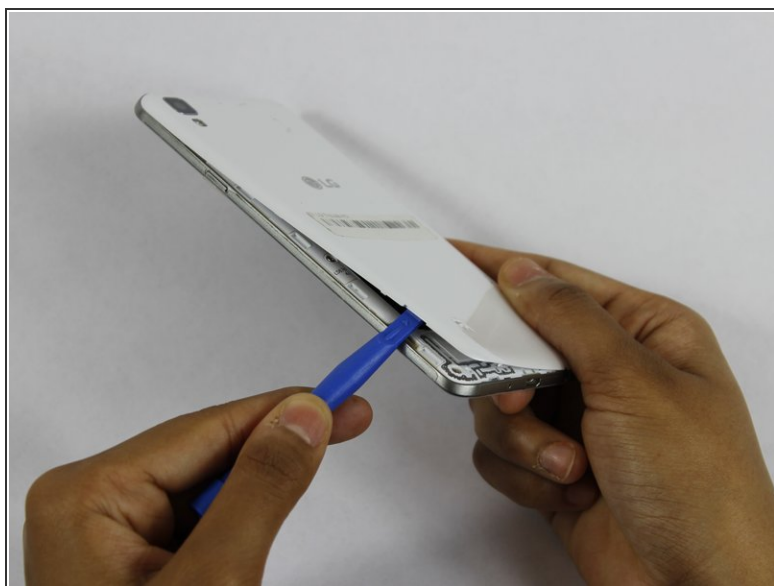
---



### TOOLS:

- [iFixit Opening Tools](#) (1)
  - [JIS #00 Screwdriver](#) (1)
-

## Step 1 — Battery and SD Card



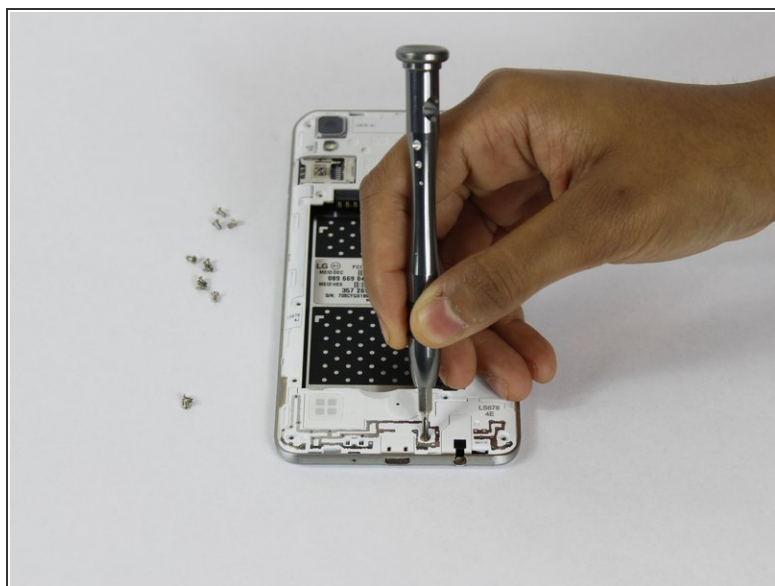
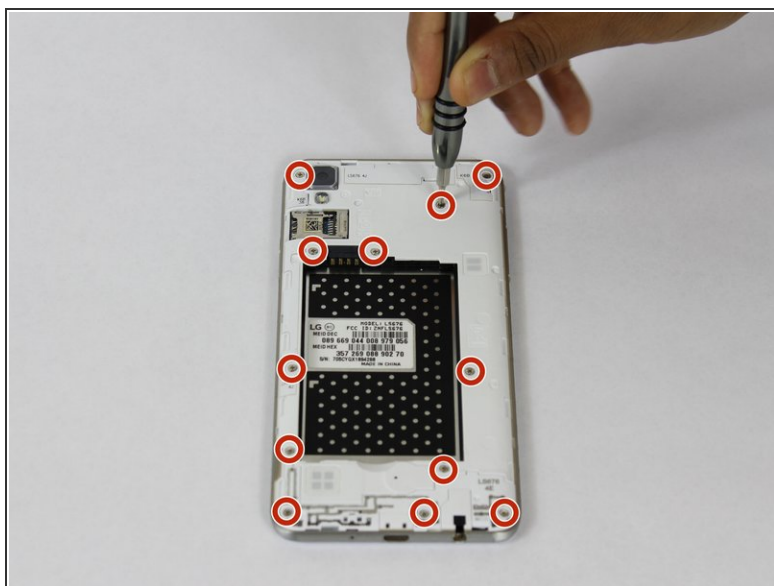
- Insert a fingernail, or plastic opening tool, into the cutout on the back cover and pry outward to remove.

## Step 2



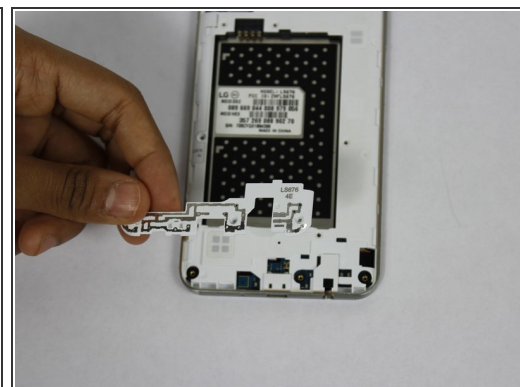
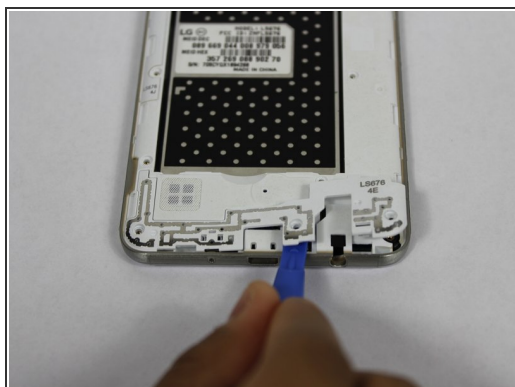
- Pull the battery out of the phone.
- Remove the SD Card by sliding the card out as shown.

## Step 3 — Headphone Jack



- Remove the twelve 2mm JIS #00 screws from the mid-frame.

## Step 4



- Using a plastic opening tool, remove the antenna extender from the mid-frame.

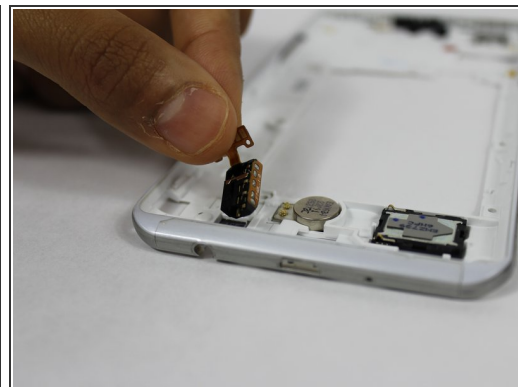
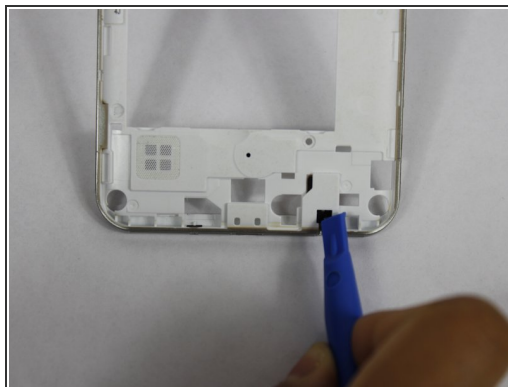
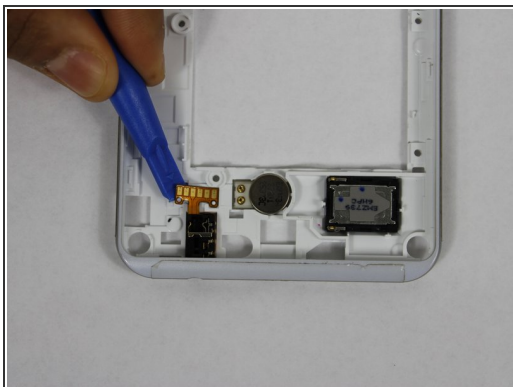


## Step 5



- Using your fingers, remove the mid-frame.

## Step 6



- Use plastic opening tool to pry up the flex cable from the back panel.
- Flip over and push on the back side of the headphone jack to dislodge it.

To reassemble your device, follow these instructions in reverse order.