



LG Tribute HD Rear Speaker Replacement

A guide for disassembling the LG Tribute HD LS676 in order to replace the rear speaker. This could need replacing due to water damage or from wear and tear.

Written By: Jerry Koenig



INTRODUCTION

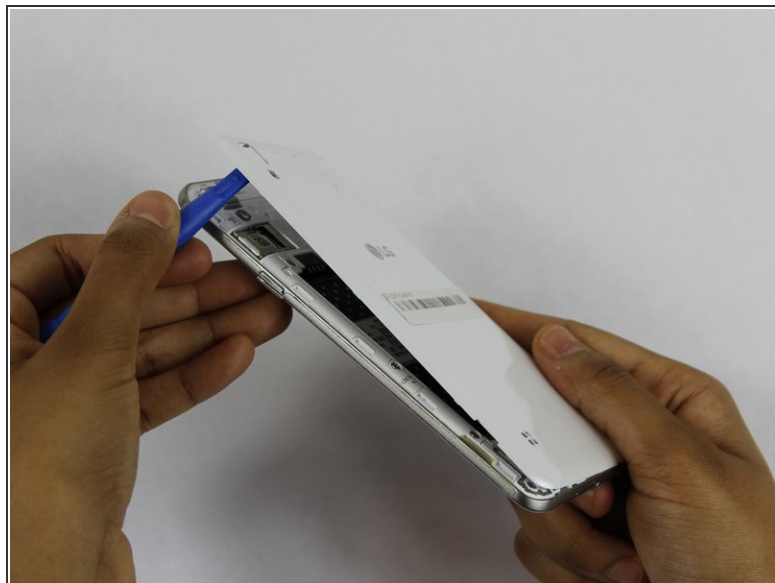
This guide will teach you how to properly replace the rear facing speaker in the LG Tribute HD LS676



TOOLS:

- [iFixit Opening Tools](#) (1)
 - [JIS #00 Screwdriver](#) (1)
-

Step 1 — Battery and SD Card



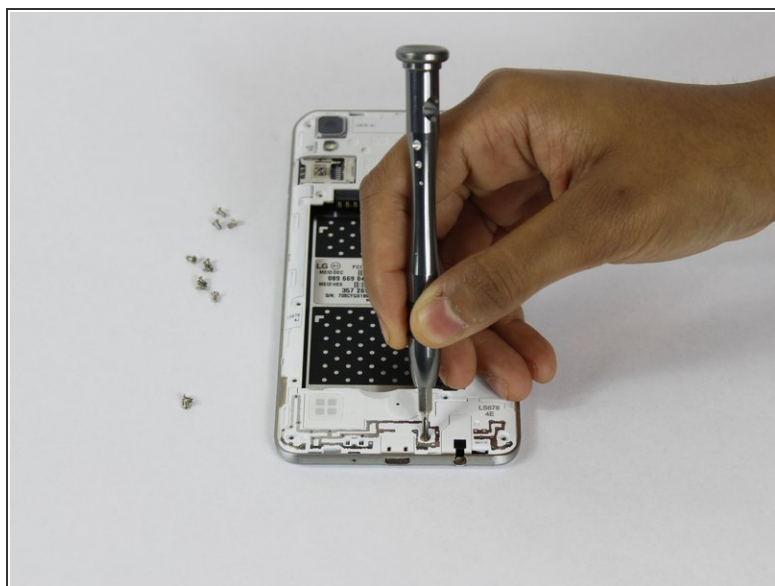
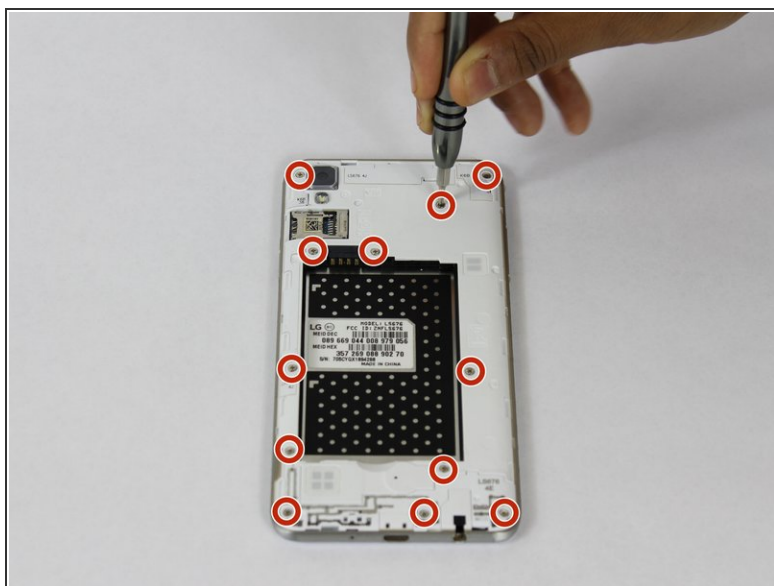
- Insert a fingernail, or plastic opening tool, into the cutout on the back cover and pry outward to remove.

Step 2



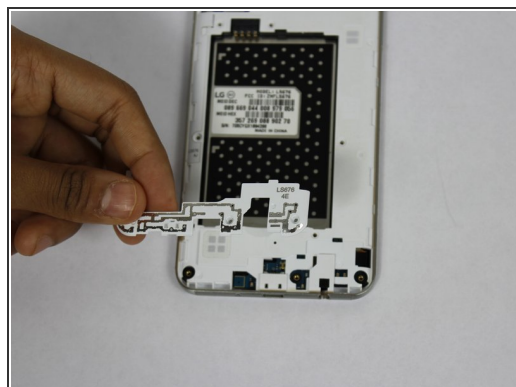
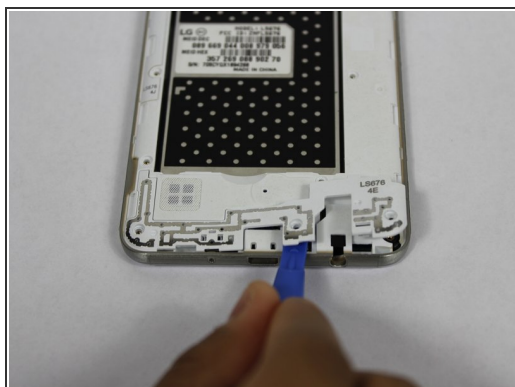
- Pull the battery out of the phone.
- Remove the SD Card by sliding the card out as shown.

Step 3 — Rear Speaker



- Remove the twelve 2mm JIS #00 screws from the mid-frame.

Step 4



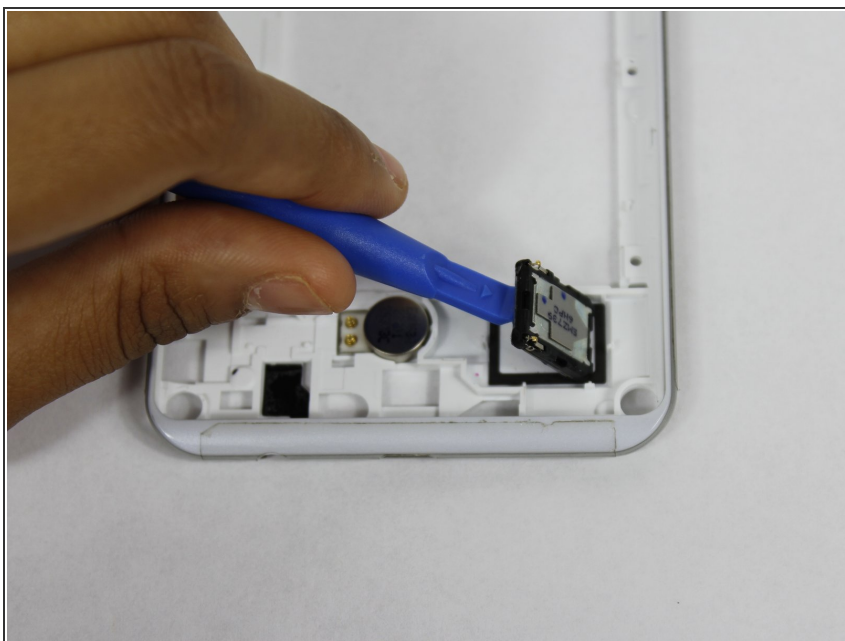
- Using a plastic opening tool, remove the antenna extender from the mid-frame.

Step 5



- Using your fingers, remove the mid-frame.

Step 6



- Using a plastic opening tool, pry the rear facing speaker from the panel.

To reassemble your device, follow these instructions in reverse order.