



# LG Tribute Mid-panel Removal

Prerequisite Only

Written By: Aaron Amdall





## TOOLS:

- [iFixit Opening Tools](#) (1)
  - [Phillips #000 Screwdriver](#) (1)
-

## Step 1 — Battery



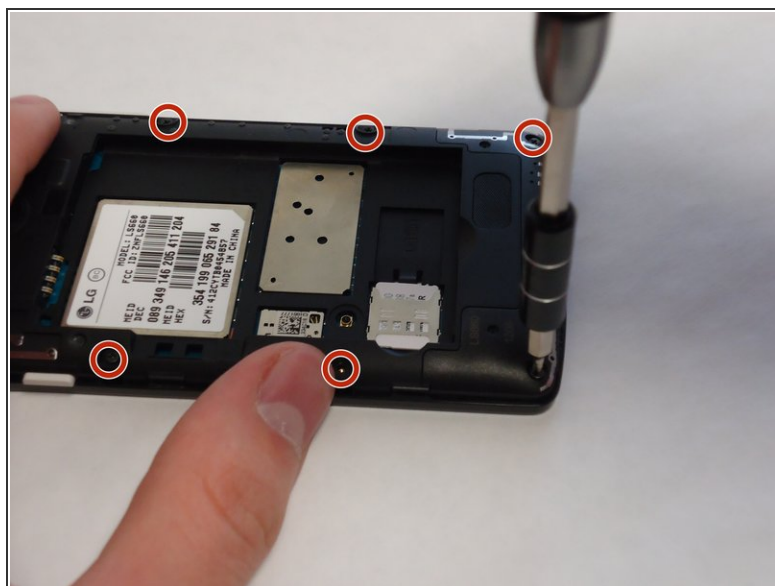
- Use the plastic opening tool to pry off the back cover.

## Step 2



- Lift the battery out of place.
- ★ When replacing the battery, the (+) and (-) symbols must match up with the phone's charging nodes.

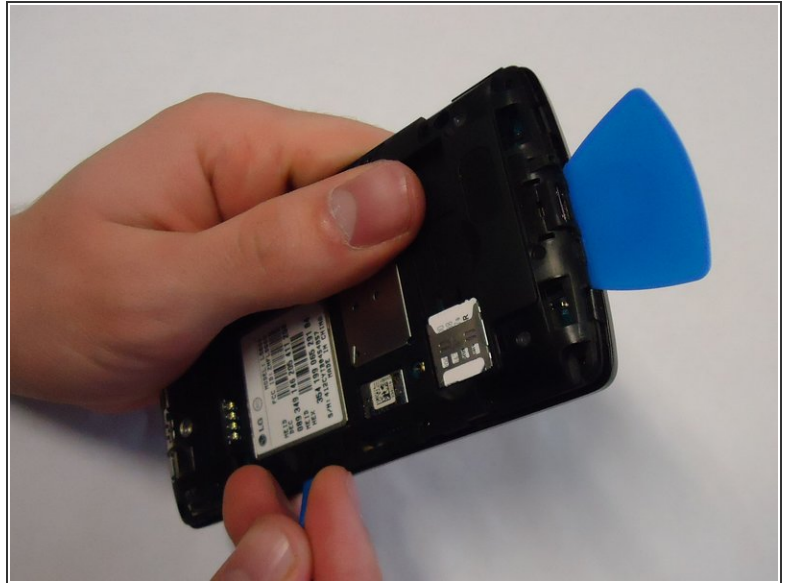
## Step 3 — Mid-panel



- Remove eight 4mm screws using a Phillips head 000 screwdriver (PH000).



## Step 4



- Use a plastic opening tool to loosen the tabs around the edge of the phone.
- ⓘ Inserting a thin piece of plastic will help prevent opened tabs from locking back into place.
- ⚠ This step can be frustrating, but requires patience. Avoid the temptation to pry the panel loose. Using excessive force may break the delicate tabs.

To reassemble your device, follow these instructions in reverse order.