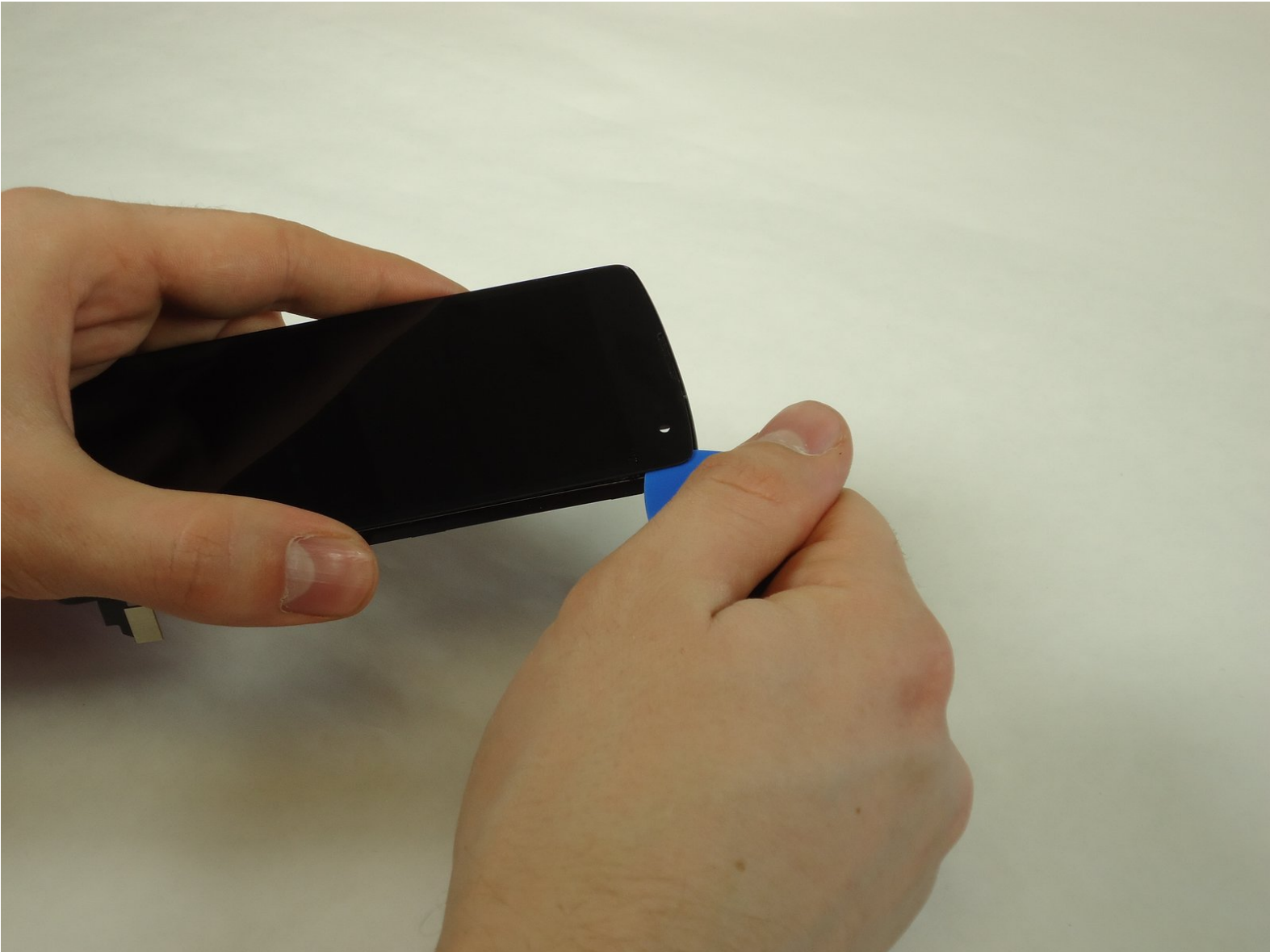




LG Tribute Touchscreen Replacement

This guide shows how to replace the touchscreen on the LG Tribute.

Written By: Aaron Amdall



INTRODUCTION

This guide will assist in successfully replacing the LG Tribute touchscreen.



TOOLS:

- [iFixit Opening Tools](#) (1)
 - [iFixit Opening Picks set of 6](#) (1)
 - [Phillips #000 Screwdriver](#) (1)
-

Step 1 — Battery



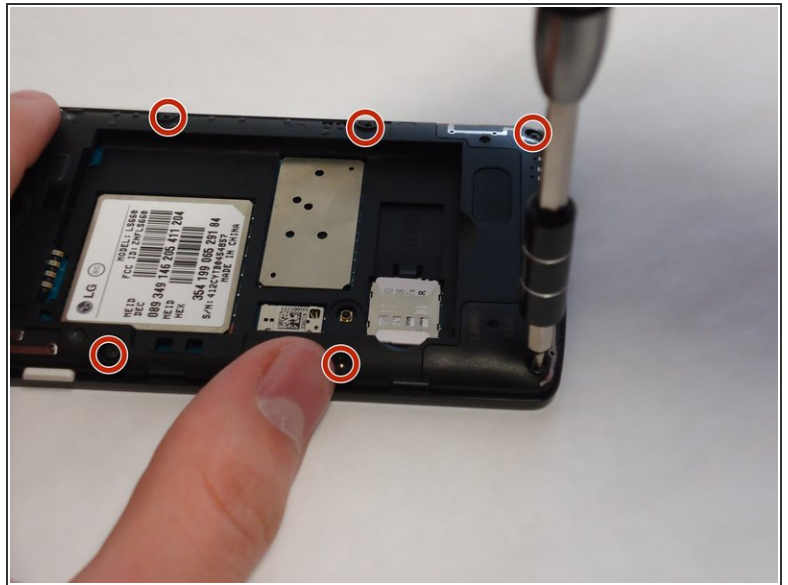
- Use the plastic opening tool to pry off the back cover.

Step 2



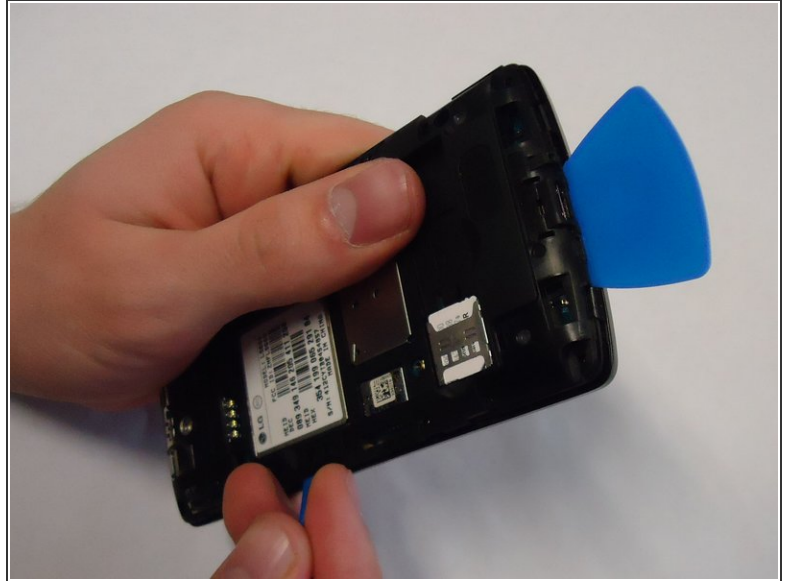
- Lift the battery out of place.
- ★ When replacing the battery, the (+) and (-) symbols must match up with the phone's charging nodes.

Step 3 — Mid-panel



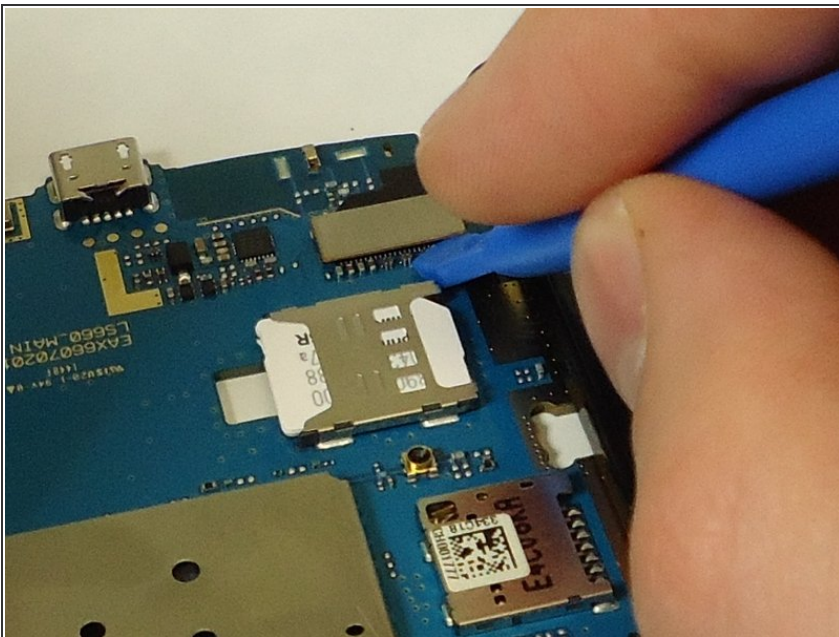
- Remove eight 4mm screws using a Phillips head 000 screwdriver (PH000).

Step 4



- Use a plastic opening tool to loosen the tabs around the edge of the phone.
- ⓘ Inserting a thin piece of plastic will help prevent opened tabs from locking back into place.
- ⚠ This step can be frustrating, but requires patience. Avoid the temptation to pry the panel loose. Using excessive force may break the delicate tabs.

Step 5 — Motherboard



- Use a plastic opening tool to disconnect the touchscreen from the motherboard.
- ⓘ The motherboard will be completely free from the front panel after this step.

Step 6 — Touchscreen



- Use a thin piece of plastic to carefully peel the frame away from the touchscreen glass.
- When the frame is completely free, remove all of the glue.

 When removing the glue, be sure the speaker grill and LED light spacer do not dislodge.

To reassemble your device, follow these instructions in reverse order.