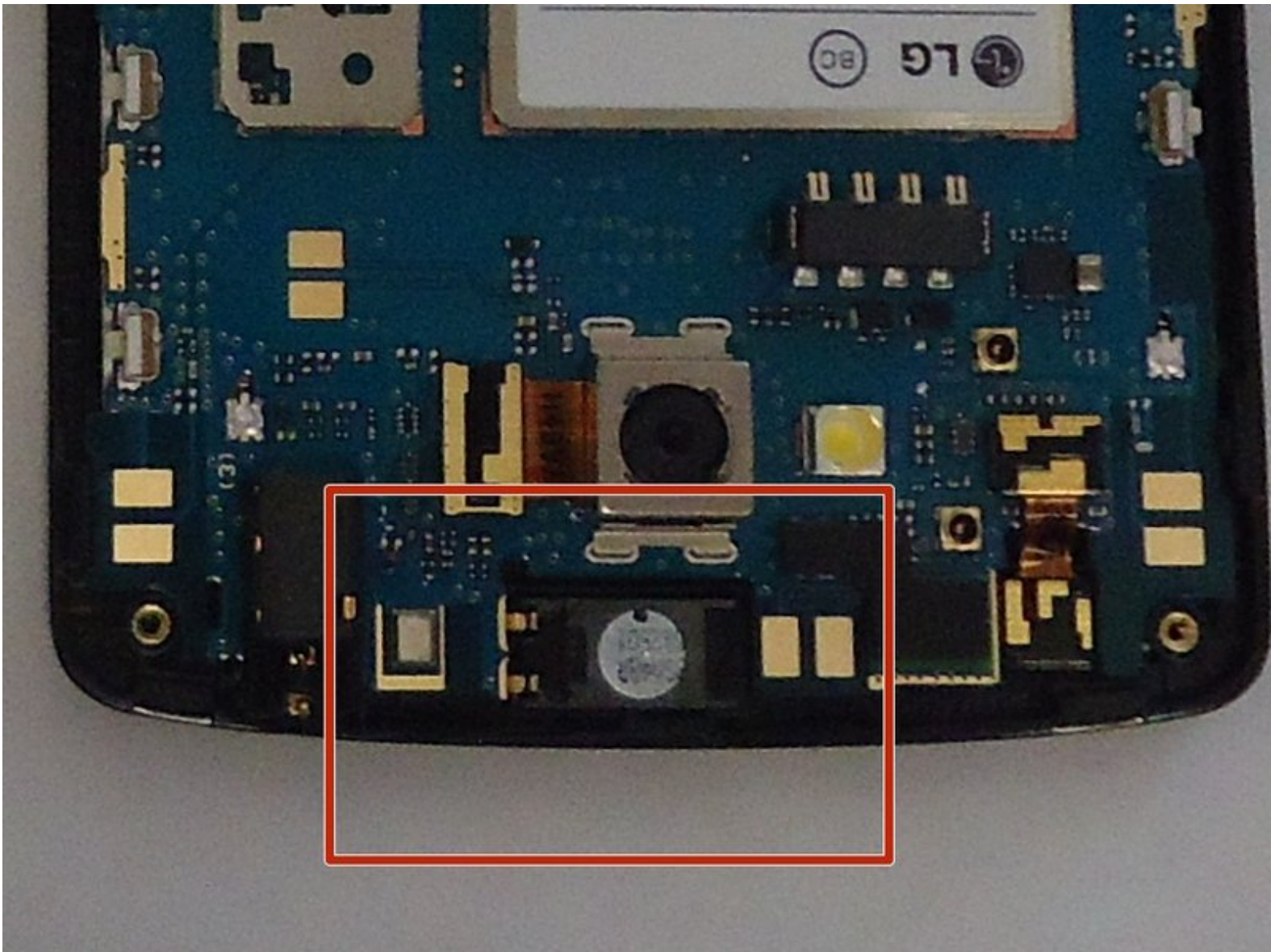




# LG Tribute lower media Speaker Replacement

This guide will assist in replacing the ear piece speaker located at the top of the phone.

Written By: Marissa Eubank



## INTRODUCTION

This guide will demonstrate how to properly replace the ear piece speaker. The ear piece speaker is located at the top of the phone near the front facing camera.



### TOOLS:

- [iFixit Opening Tools](#) (1)
- [Phillips #000 Screwdriver](#) (1)
- [iFixit Opening Picks set of 6](#) (1)



### PARTS:

- [LG Tribute Ear Piece Speaker](#) (1)

## Step 1 — Battery



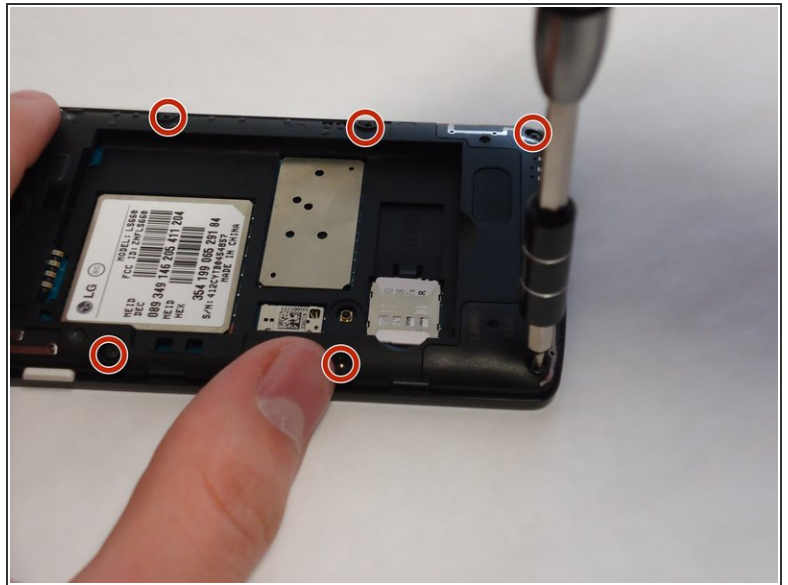
- Use the plastic opening tool to pry off the back cover.

## Step 2



- Lift the battery out of place.
- ★ When replacing the battery, the (+) and (-) symbols must match up with the phone's charging nodes.

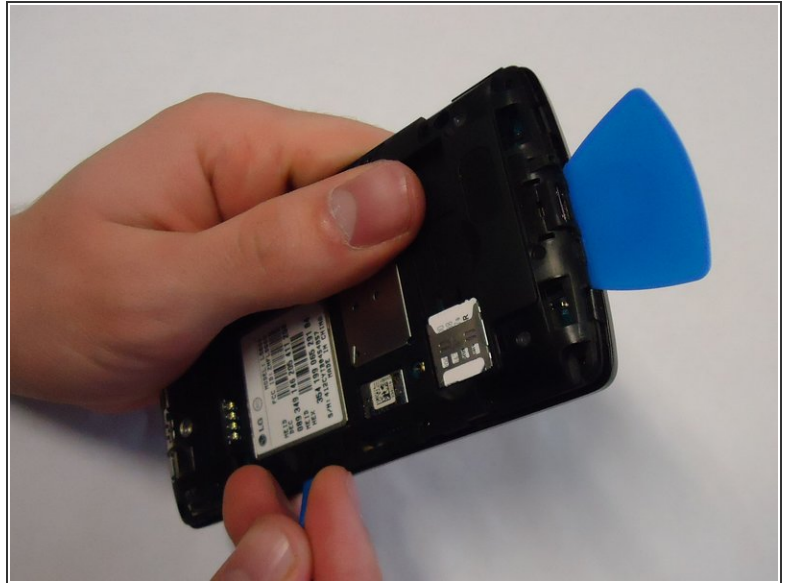
## Step 3 — Mid-panel



- Remove eight 4mm screws using a Phillips head 000 screwdriver (PH000).

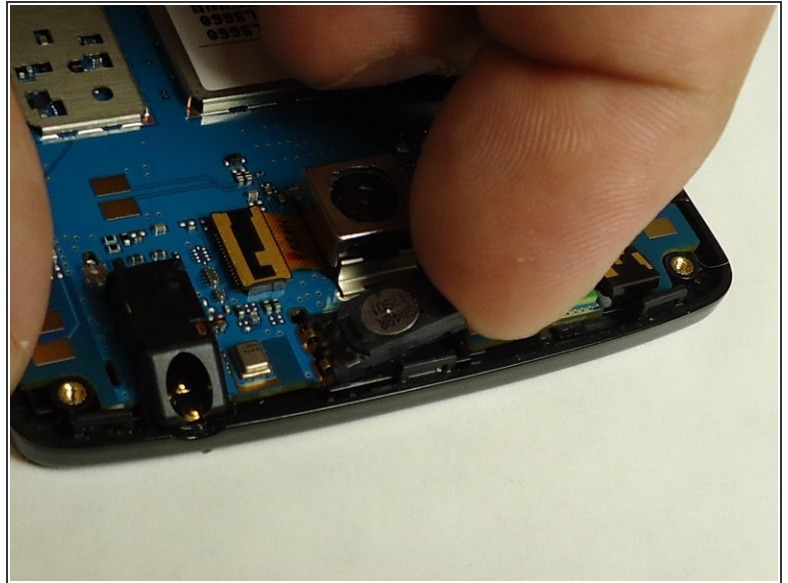
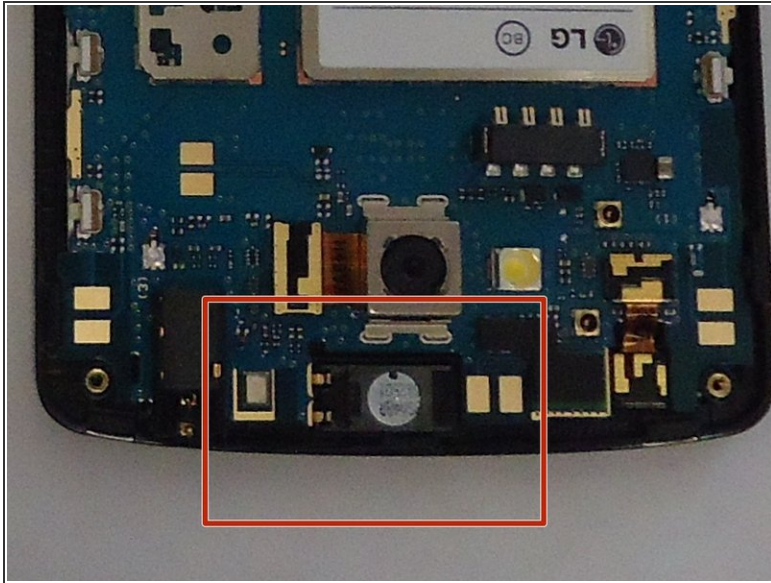


## Step 4



- Use a plastic opening tool to loosen the tabs around the edge of the phone.
- ⓘ Inserting a thin piece of plastic will help prevent opened tabs from locking back into place.
- ⚠ This step can be frustrating, but requires patience. Avoid the temptation to pry the panel loose. Using excessive force may break the delicate tabs.

## Step 5 — Main media Speaker



- Use a plastic opening tool or your finger to carefully disconnect the speaker.

To reassemble your device, follow these instructions in reverse order.