



LG Ultimate 2 SD Card Replacement

This guide will teach you how to remove the SD card on your LG Ultimate 2.

Written By: Devin Isenhower



INTRODUCTION

This guide will teach you how to remove the SD card on your LG Ultimate 2. In order to remove the SD card, you will need to use a spudger in order to loosen the back of the phone. Then, you will remove the back of the phone with your hands. Finally, you will use your hand or a metal spudger to pull the SD card out of the phone.



TOOLS:

- [Metal Spudger](#) (1)
 - [iFixit Opening Tools](#) (1)
-

Step 1 — SD Card



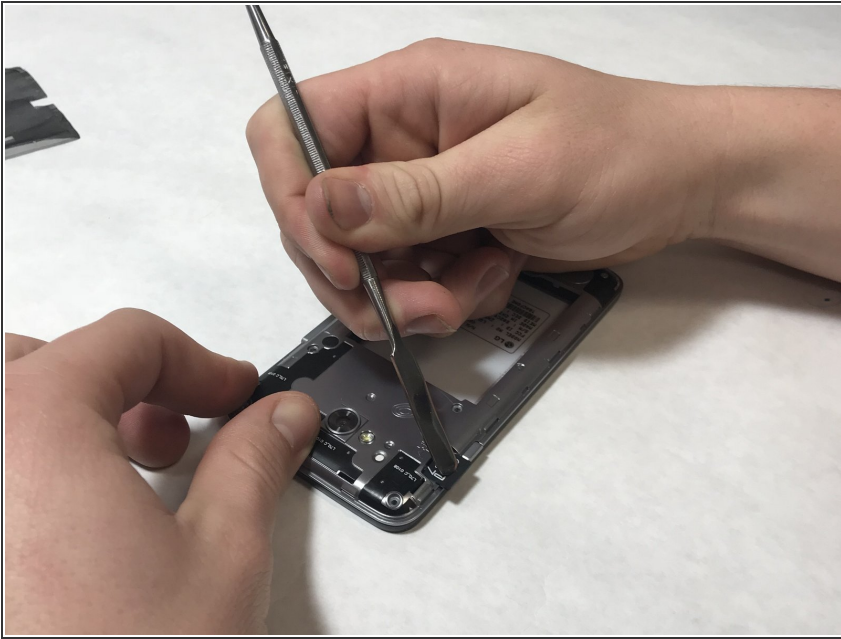
- Wedge the plastic opening tool into the seam between the plastic backing and the rest of the phone.

Step 2



- Use your hand to pull the plastic cover completely off of the phone.

Step 3



- Use the metal spudger or your hand to pull the SD card out.

To reassemble your device, follow these instructions in reverse order.