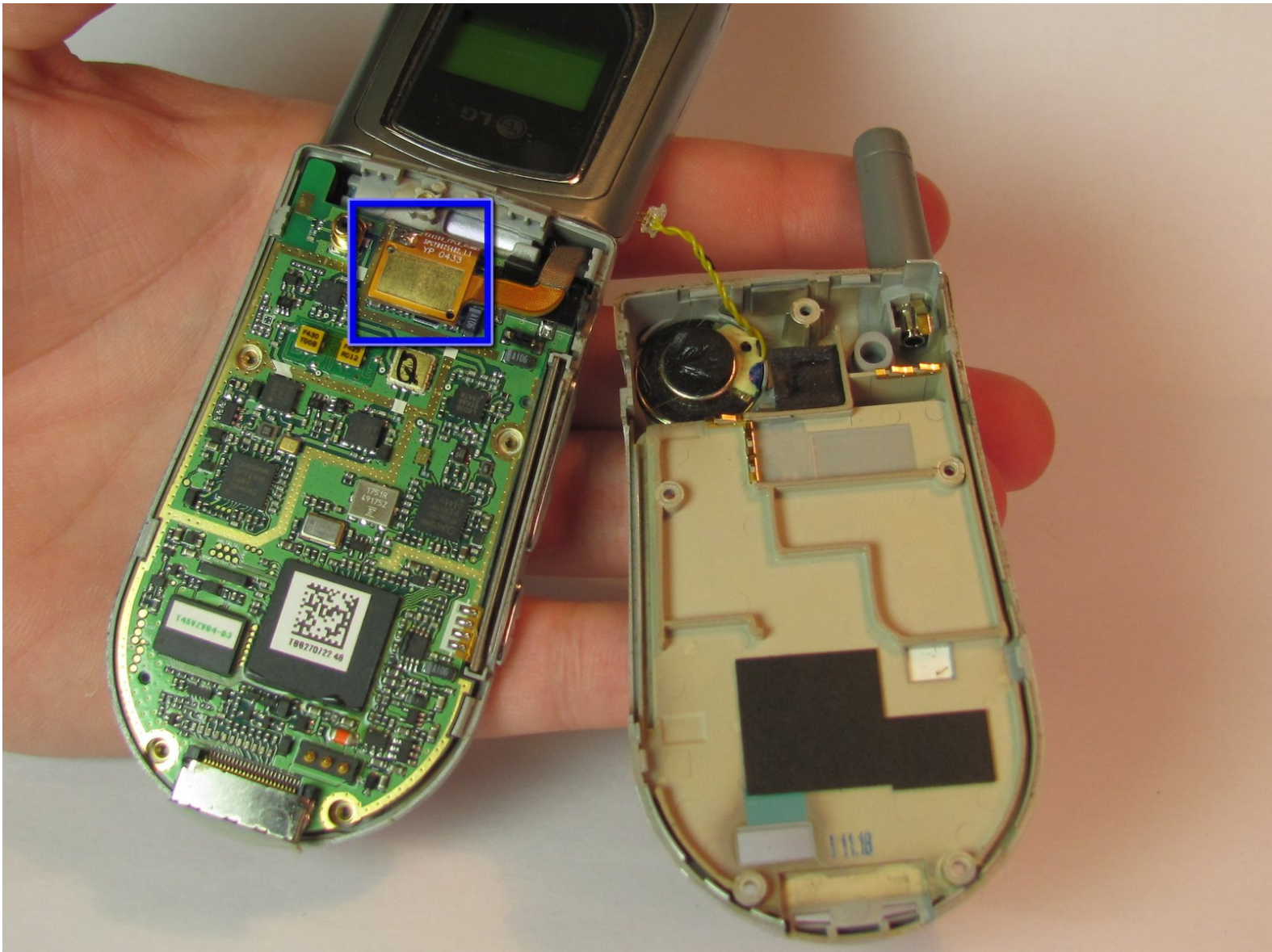




# LG VX4500 Logic Board Replacement

Written By: iDeleted



## INTRODUCTION

This guide is for replacing the logic board in your LG VX4500 cell phone.



### TOOLS:

- [Soldering Workstation](#) (1)



### PARTS:

- [lg vx4500 logic board](#) (1)

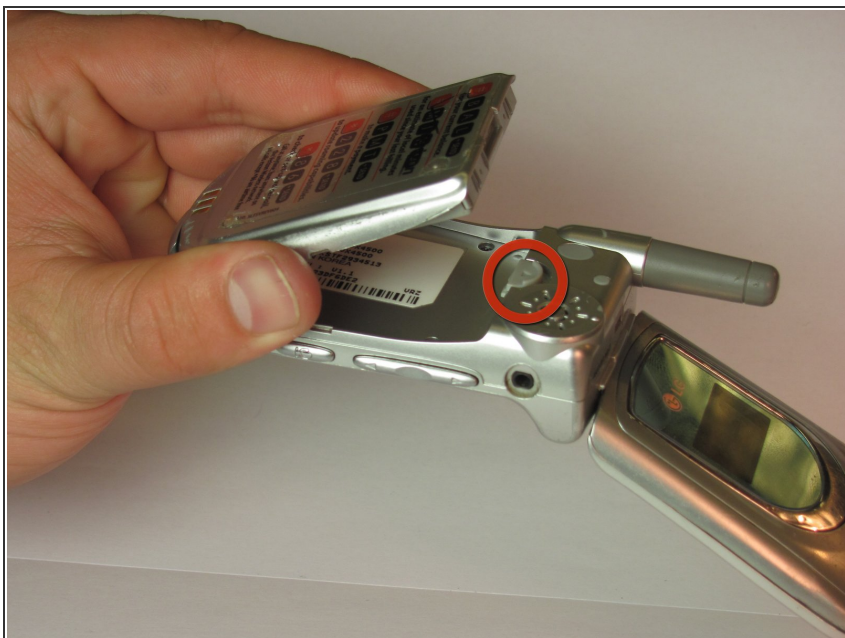
## Step 1 — Battery



⚠ Before removing the battery, ensure that the phone is turned off.

- To remove the battery from your LG VX4500, turn the phone so that the back panel is showing.

## Step 2



- Pull back on the white release tab and lift up the the entire battery.

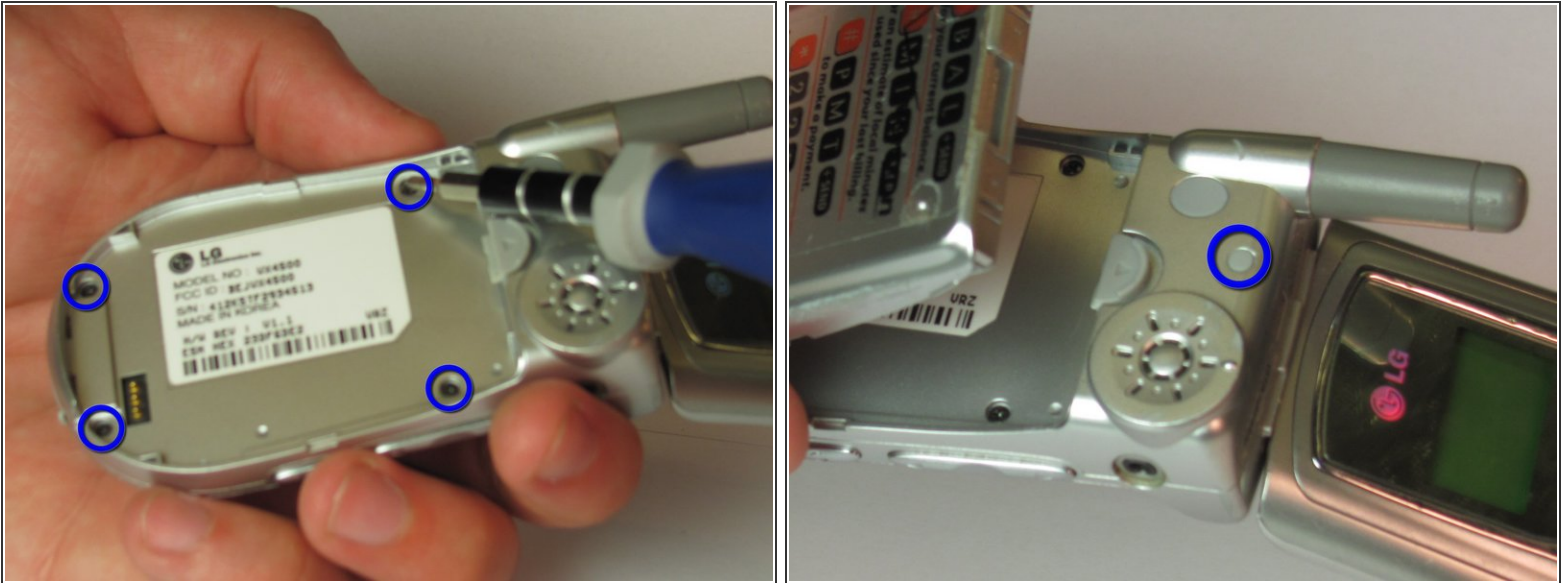
## Step 3



- The back panel should now be fully accessible.



## Step 4 — LG VX4500 Disassembly



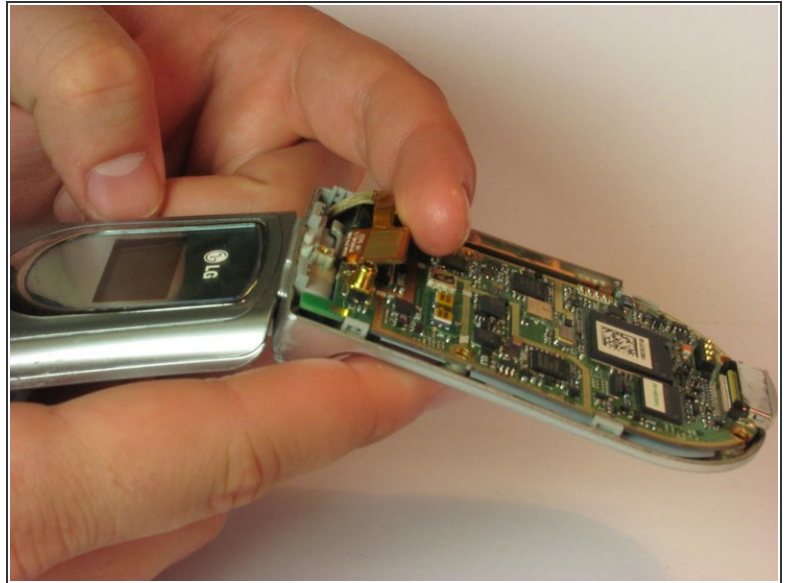
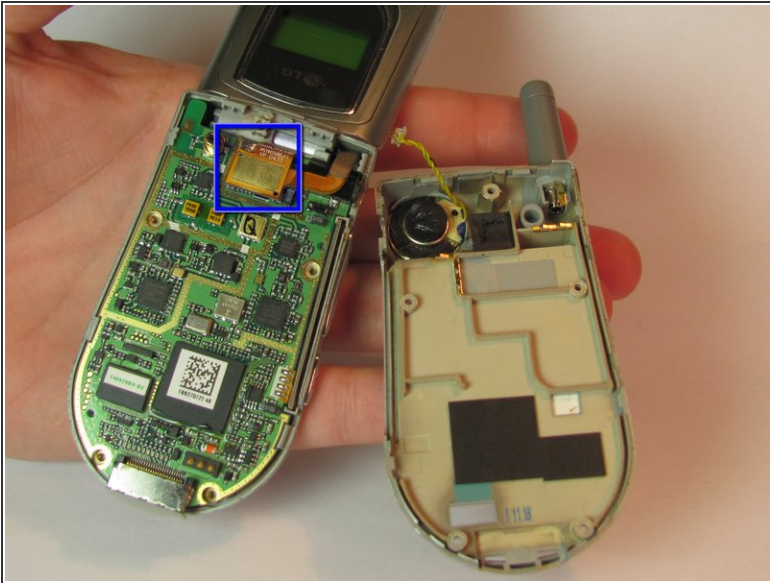
- Using a paper clip, remove all 4 rubber screwcaps from the screw ports.
- With a Phillips head screwdriver, remove all 4 screws from their ports.
- Also remove the rubber screwcap in the upper part of the back panel along with the screw under it.
- The fifth screw will be more difficult to get out because the plastic port has much higher sides.

## Step 5



- Run a plastic opening tool along the seam to separate the keyboard cover and the back panel
- Remove the back panel, now the logic board, keyboard and microphone are exposed.

## Step 6 — Logic Board



- With your fingers, gently lift up the gold connector until it is completely disconnected.

To reassemble your device, follow these instructions in reverse order.