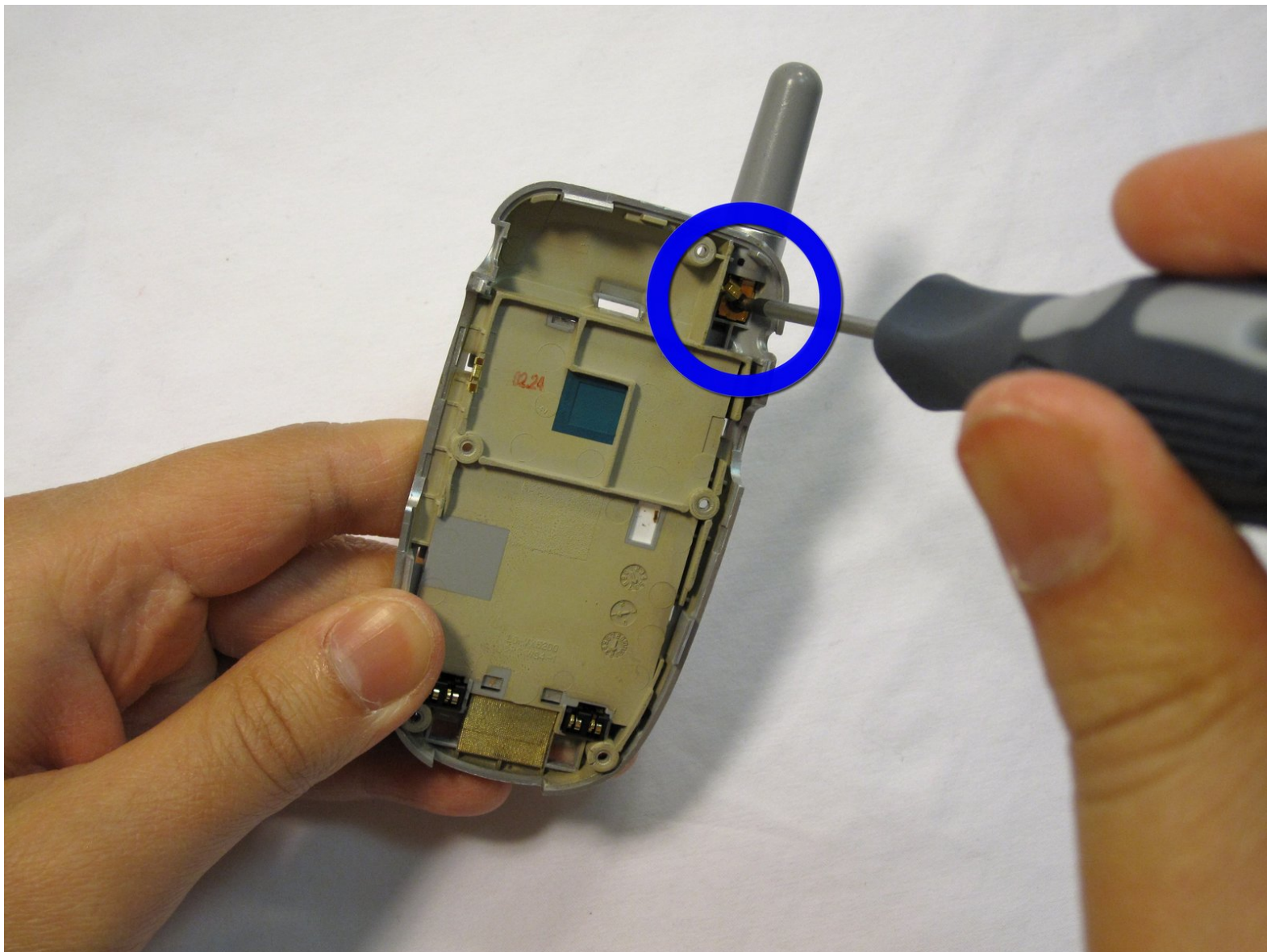




LG VX5200 Antenna Replacement

Written By: Douglas Blaalid



INTRODUCTION

A guide to replace the antenna.



TOOLS:

- [Phillips #00 Screwdriver](#) (1)
-

Step 1 — Battery



- Turn the phone on its back.

Step 2



- Orient the phone as shown.
- Remove the battery cover by pushing upward with your thumb.

Step 3



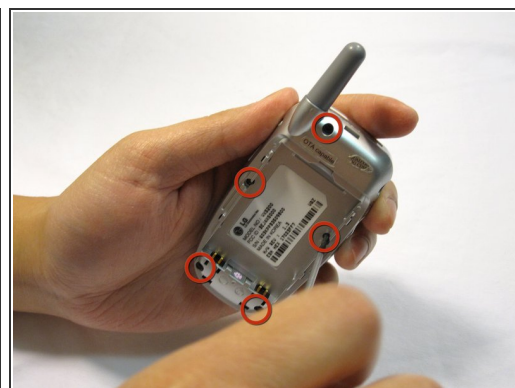
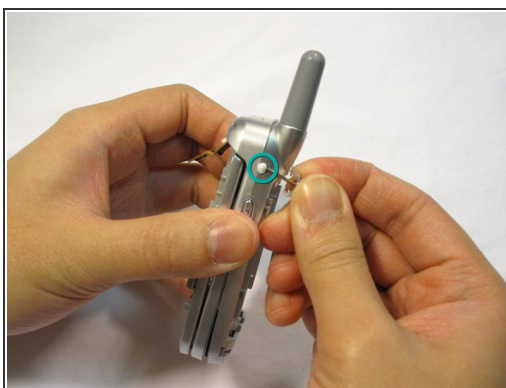
- Place your fingernail at the top of the battery and pry the battery out towards you.

Step 4 — LG VX5200 Rear Body Panel Disassembly



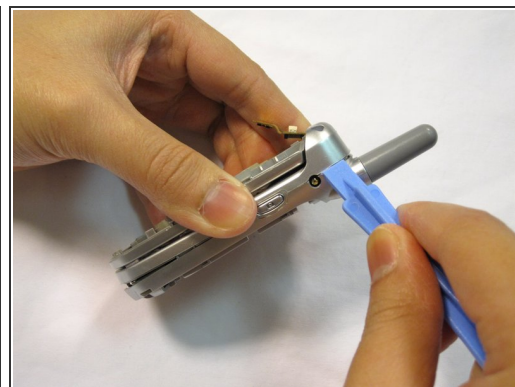
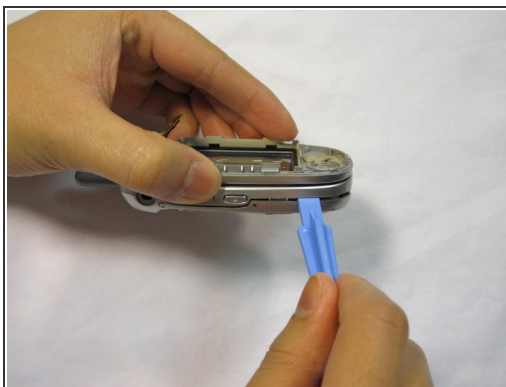
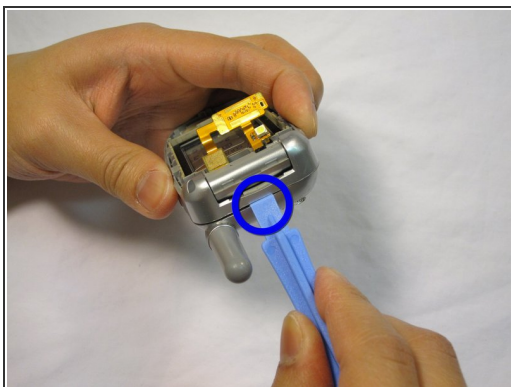
- Orient the phone as shown with the battery already removed.

Step 5



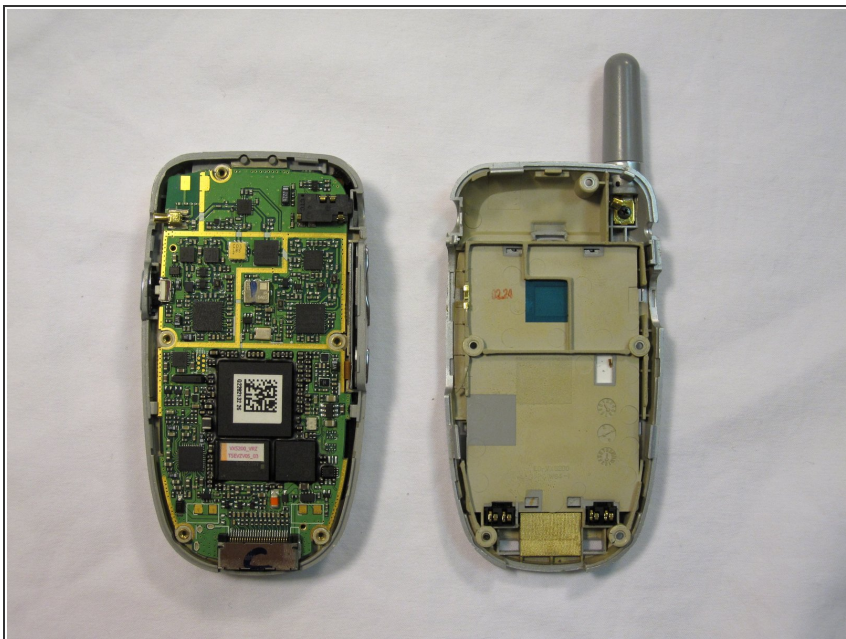
- Remove the 2 plastic plugs located on the side and upper quadrant of the rear body panel by using the push-pin and lifting outwards.
- Use a Phillips #00 screwdriver to remove the 5 screws as shown here.

Step 6



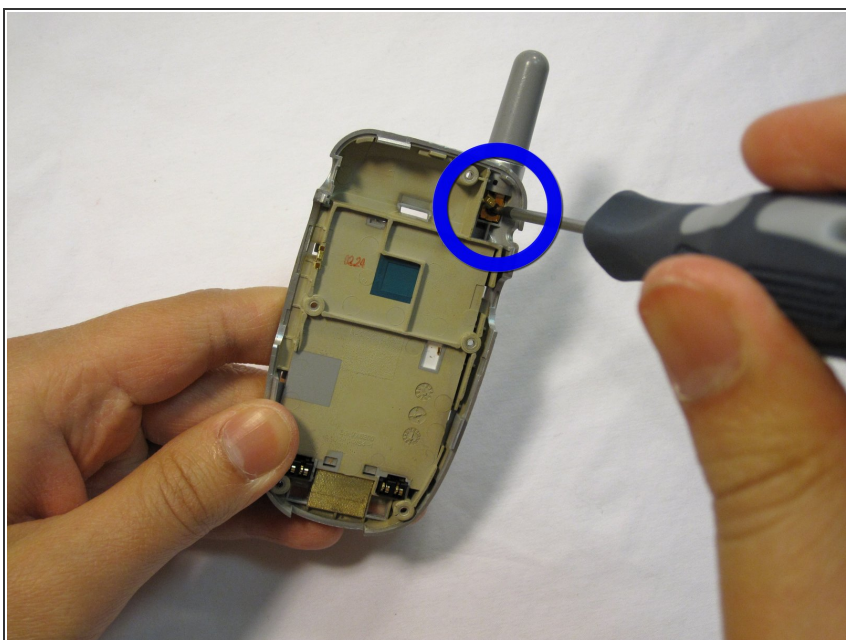
- Place an iPod opener tool in the seam above the antenna.
- Run the tool around the perimeter of the entire phone.

Step 7



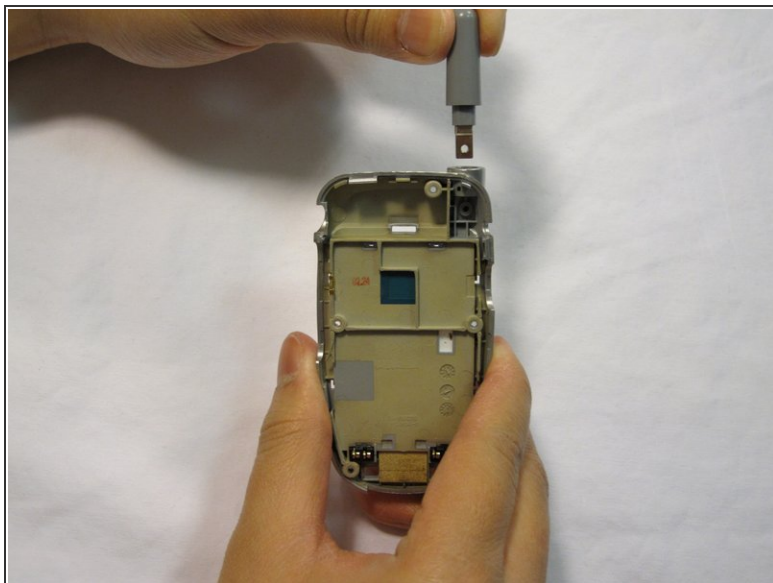
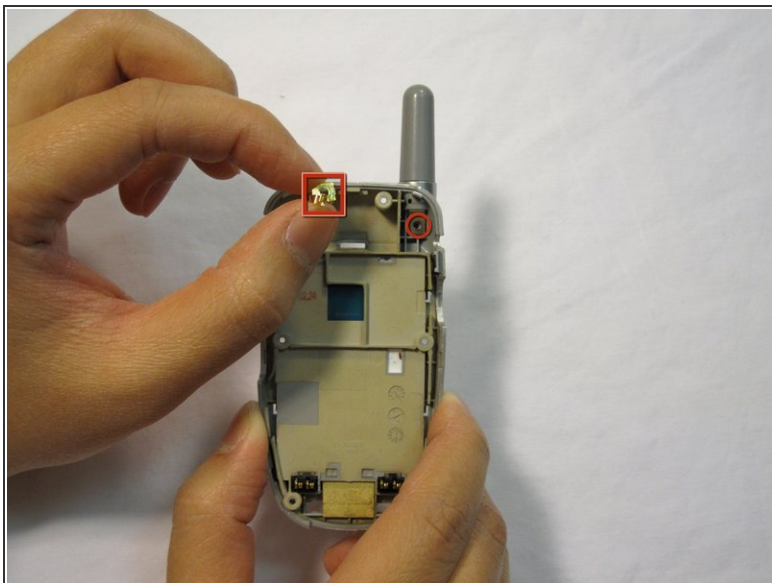
- Check to see that your device looks like the attached photo.

Step 8 — Antenna



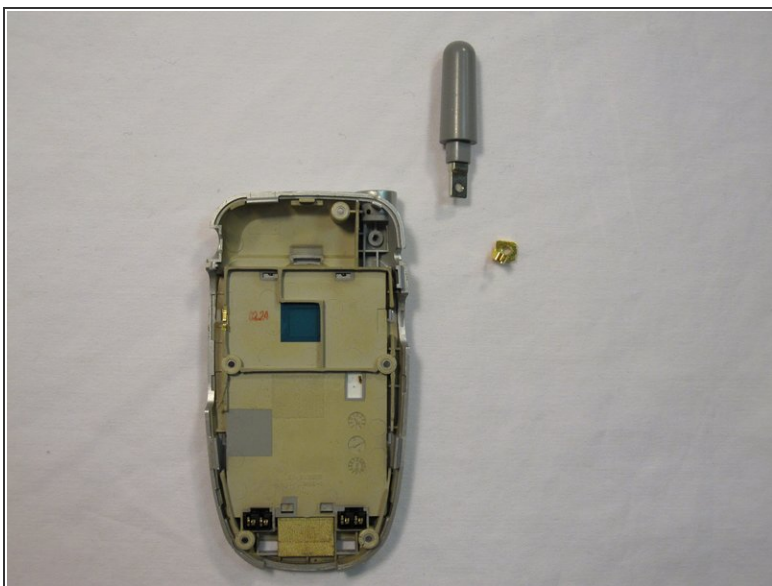
- Locate the screw and copper fixture that hold the antenna in place.
- Remove the screw from the device using a Philips #00 screwdriver.

Step 9



- Remove the copper fixture after it has been unscrewed.

Step 10



- Check to see that your device looks like the attached photo.

To reassemble your device, follow these instructions in reverse order.