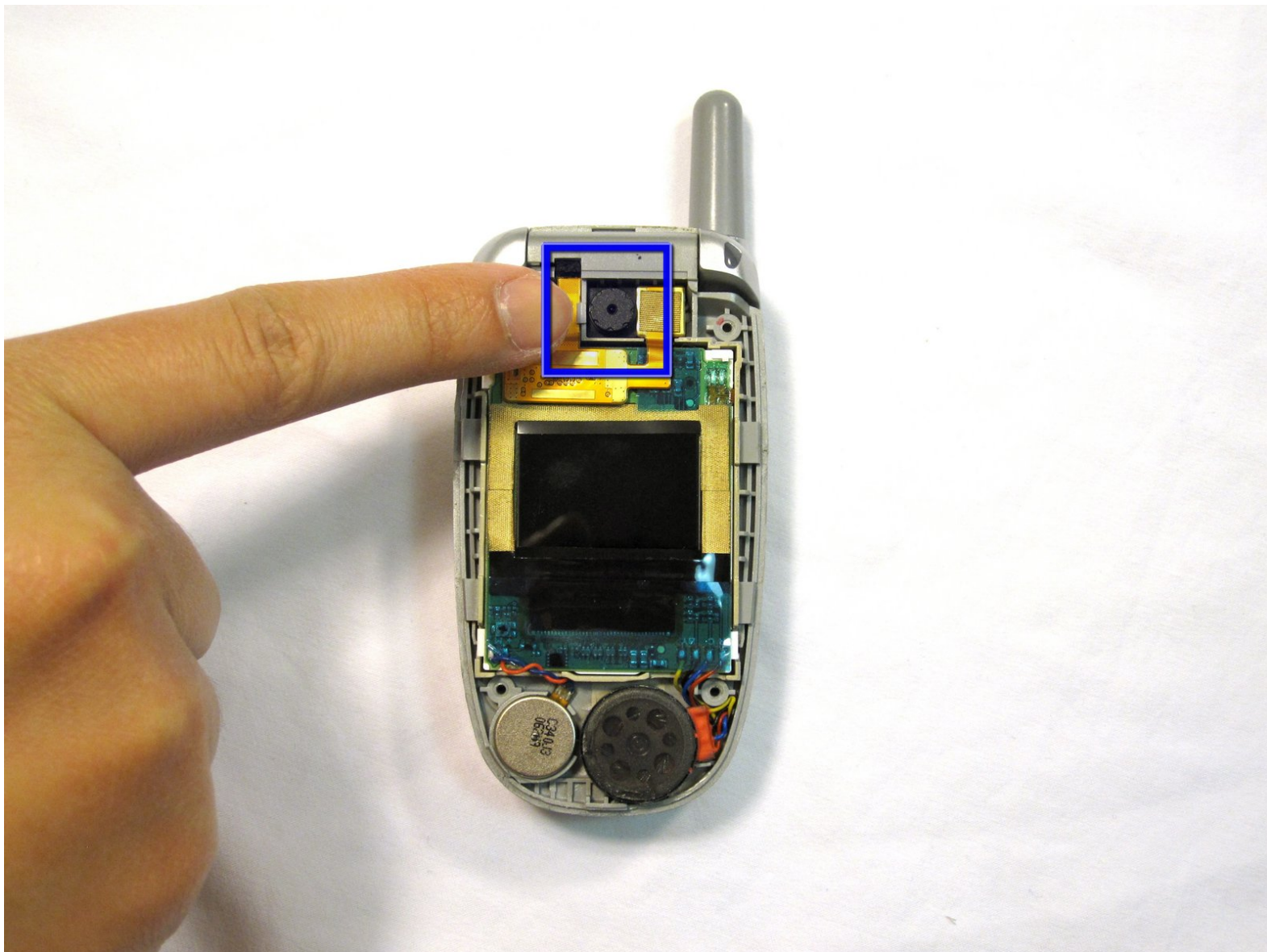




LG VX5200 Camera Replacement

Written By: Douglas Blaalid



INTRODUCTION

A guide to removing and reinstalling the flip phone's camera.



TOOLS:

- [iFixit Opening Tools](#) (1)
 - [Phillips #00 Screwdriver](#) (1)
 - [Push Pin](#) (1)
-

Step 1 — Battery



- Turn the phone on its back.

Step 2



- Orient the phone as shown.
- Remove the battery cover by pushing upward with your thumb.

Step 3



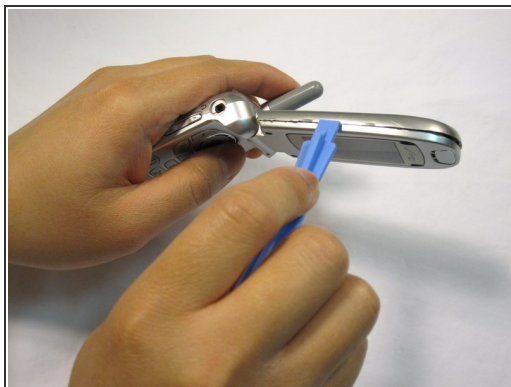
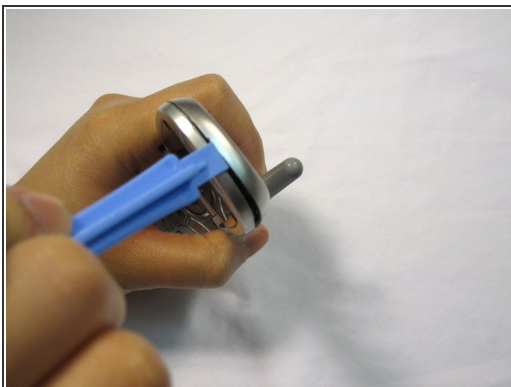
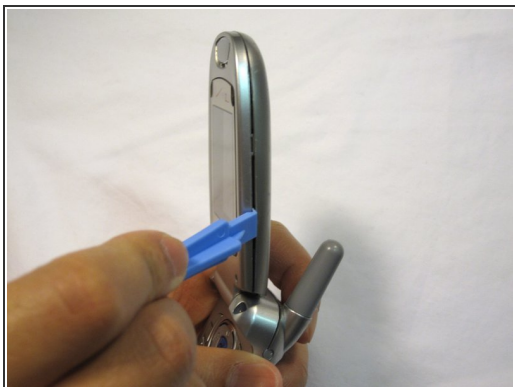
- Place your fingernail at the top of the battery and pry the battery out towards you.

Step 4 — Face Plate



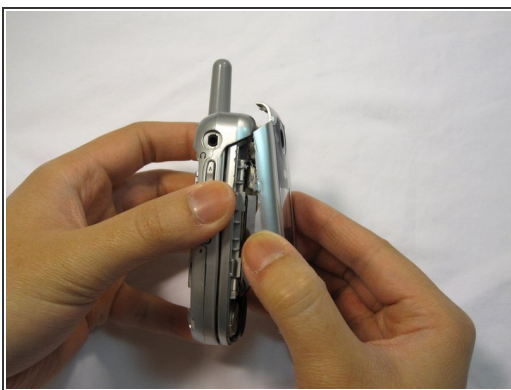
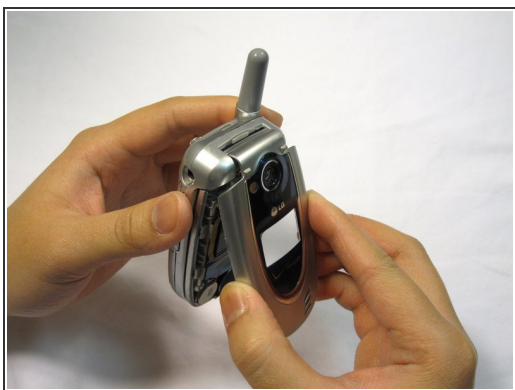
- Flip the phone open.
- Remove the four rubber plugs, located at the corners of the LCD screen, with a push-pin.
- Use a Phillips #00 screwdriver to remove the four screws located underneath the rubber plugs.

Step 5



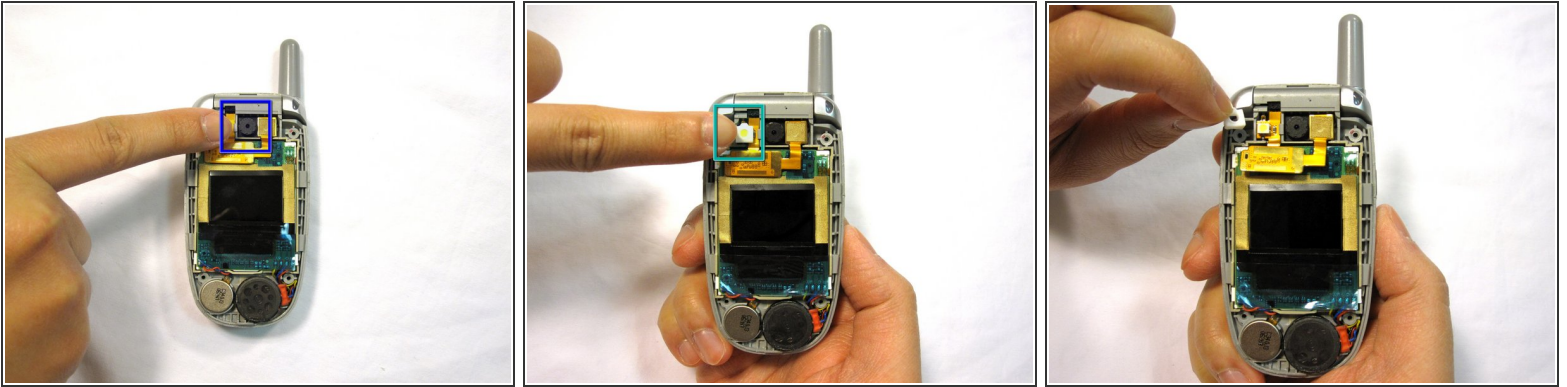
- Insert the plastic opening tool in the seam of the top portion of the flip phone.
- Gently pry the seam open.
- Move the opening tool around the perimeter of the seam and gently take the front LCD face plate out.

Step 6



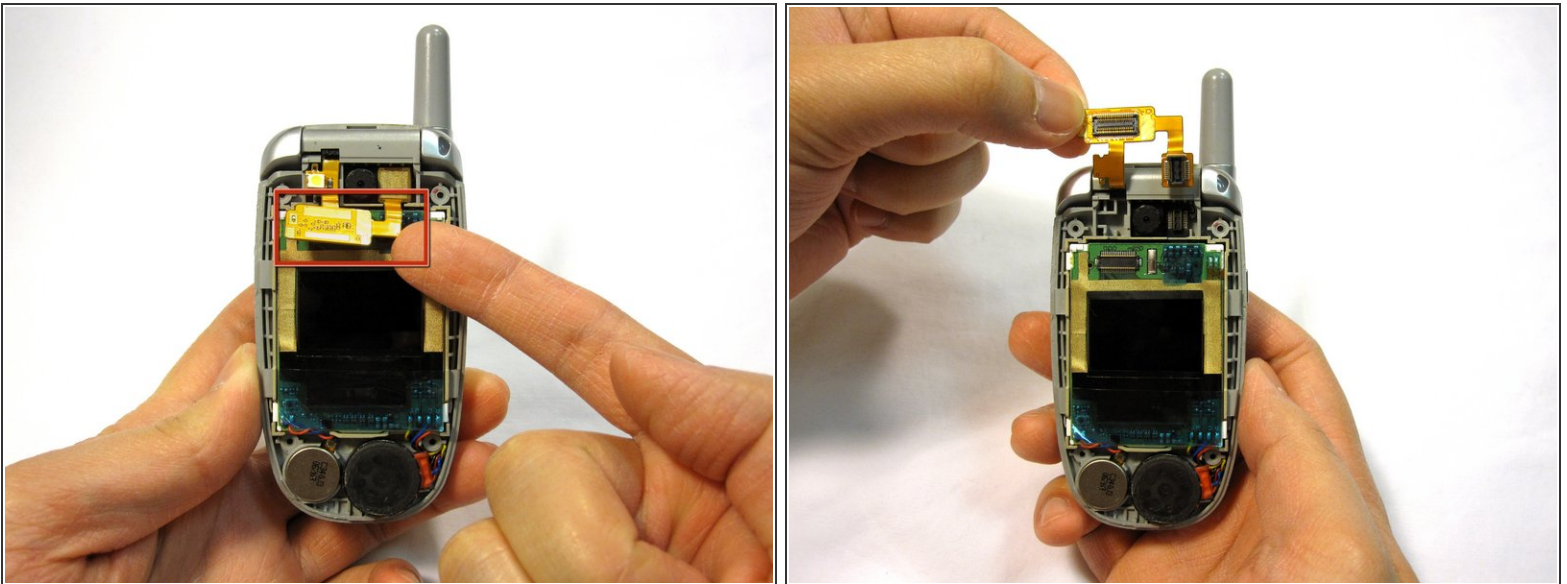
- Close the flip phone.
- Hold the base of the phone and gently remove the faceplate.
- Place the phone and the faceplate on a clean, flat surface.

Step 7 — Camera



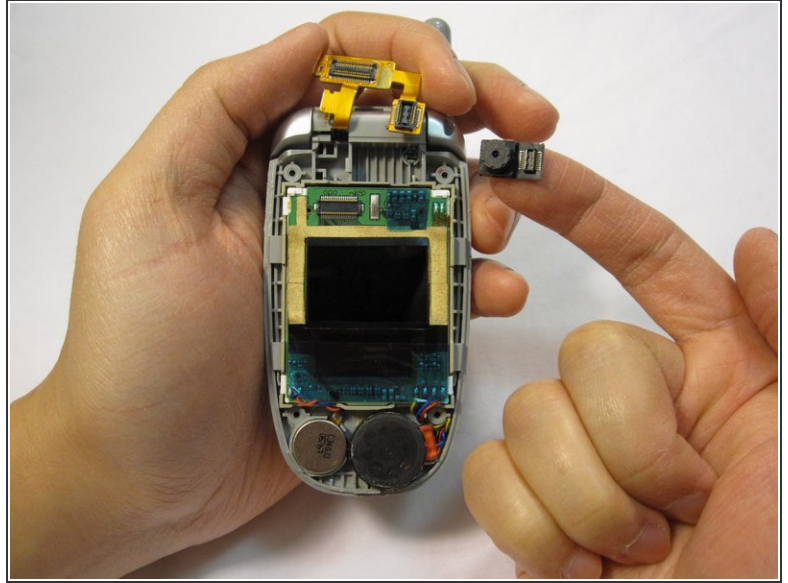
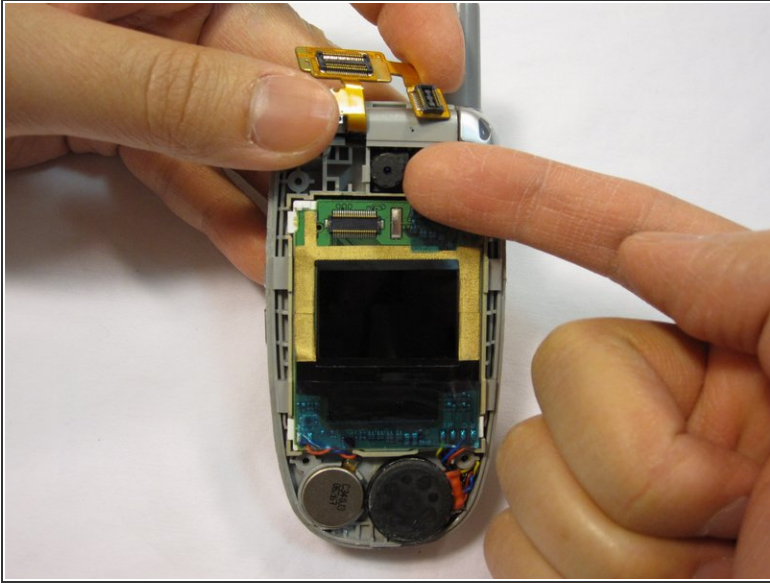
- Locate the phone camera.
- Locate the white rubber stopper to left of the camera.
- Remove white rubber stopper by grabbing an edge with your fingers and gently pulling it off.

Step 8



- Lift the copper ribbon cable up from the bottom right hand corner.

Step 9



- While holding the copper connection out of the way, use your fingernail to pry the camera out of its socket.

To reassemble your device, follow these instructions in reverse order.