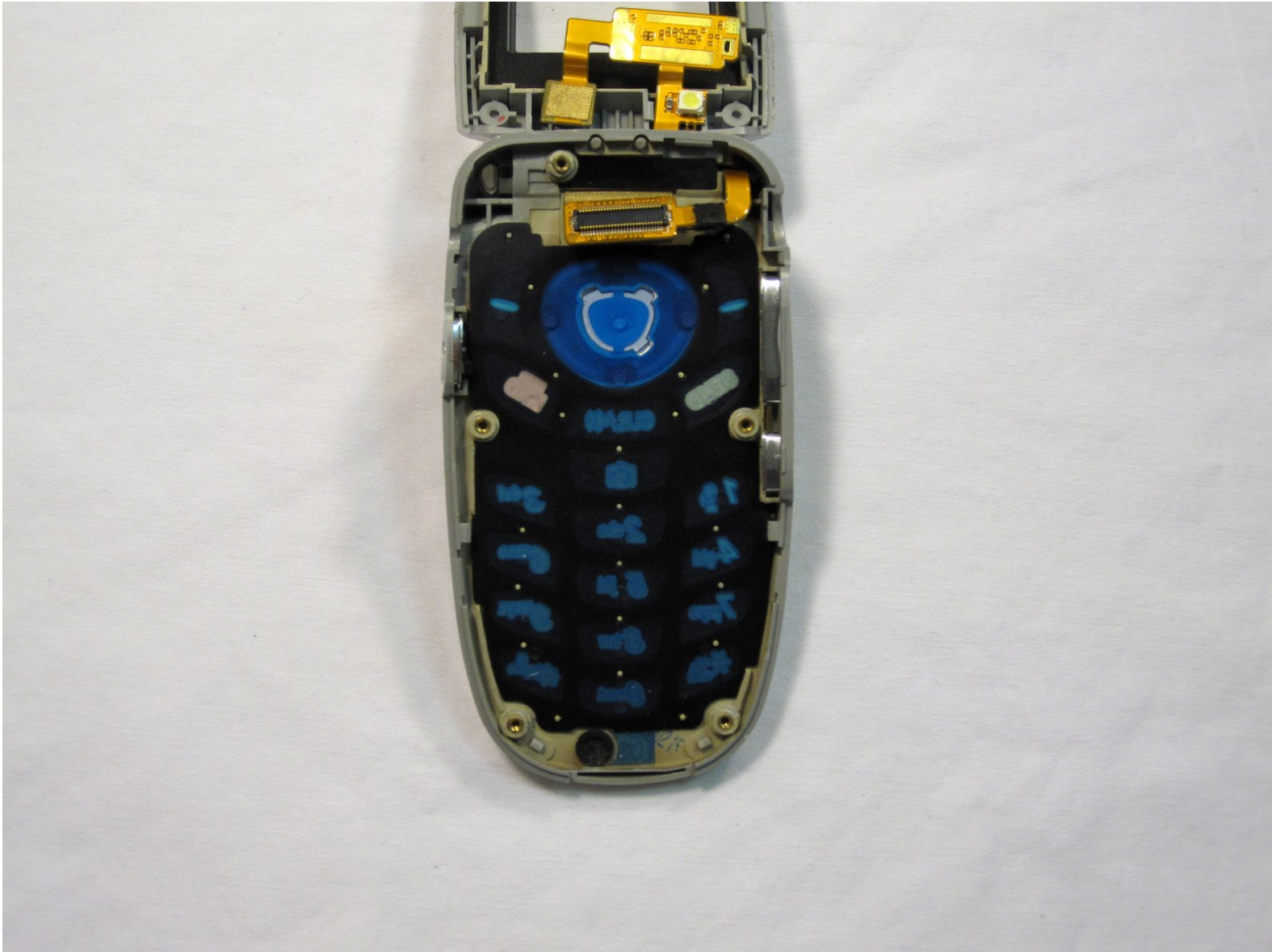




# LG VX5200 Keypad Replacement

Written By: Douglas Blaalid



---

# INTRODUCTION

Instructions to get to and remove the keypad unit.



## TOOLS:

- [Fingers](#) (1)
  - [Phillips #00 Screwdriver](#) (1)
  - [iFixit Opening Tools](#) (1)
  - [Push Pin](#) (1)
-

## Step 1 — Battery



- Turn the phone on its back.

## Step 2



- Orient the phone as shown.
- Remove the battery cover by pushing upward with your thumb.



## Step 3



- Place your fingernail at the top of the battery and pry the battery out towards you.

## Step 4 — LG VX5200 Rear Body Panel Disassembly



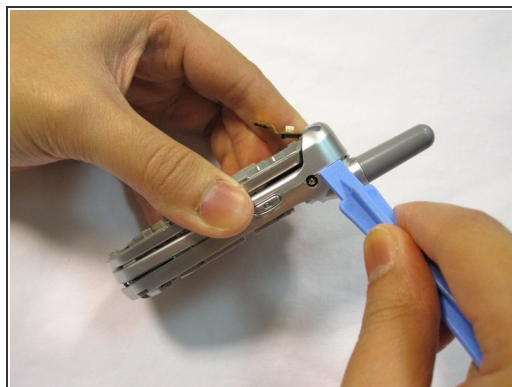
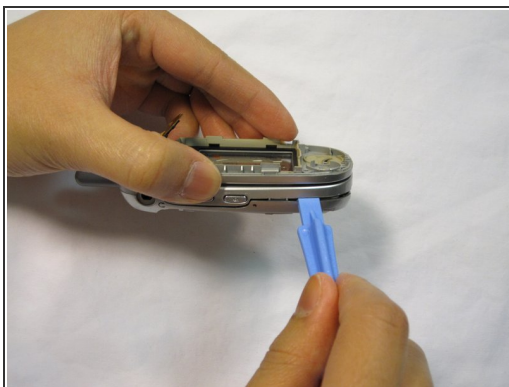
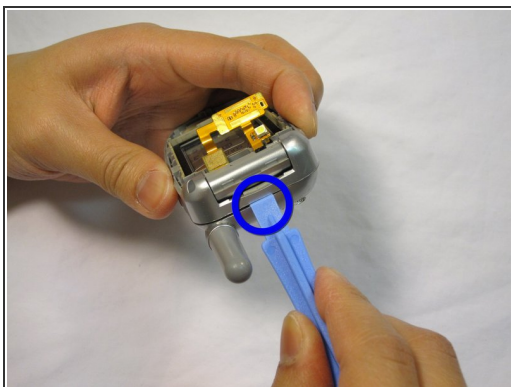
- Orient the phone as shown with the battery already removed.

## Step 5



- Remove the 2 plastic plugs located on the side and upper quadrant of the rear body panel by using the push-pin and lifting outwards.
- Use a Phillips #00 screwdriver to remove the 5 screws as shown here.

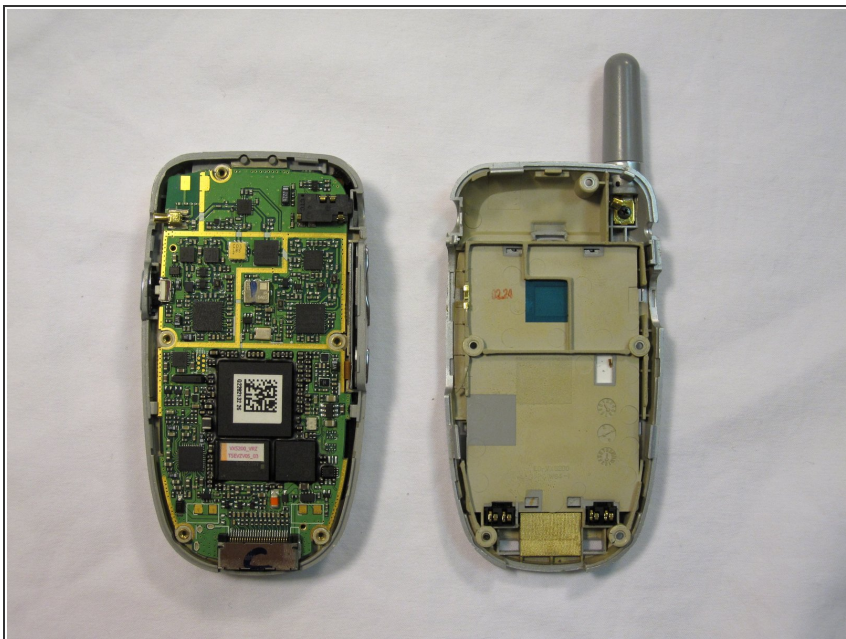
## Step 6



- Place an iPod opener tool in the seam above the antenna.
- Run the tool around the perimeter of the entire phone.

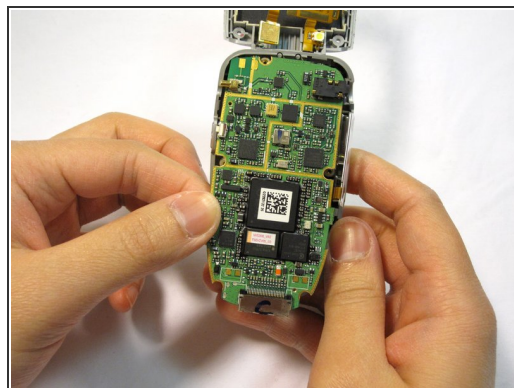
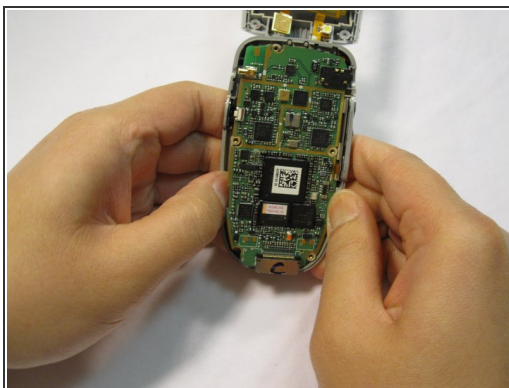
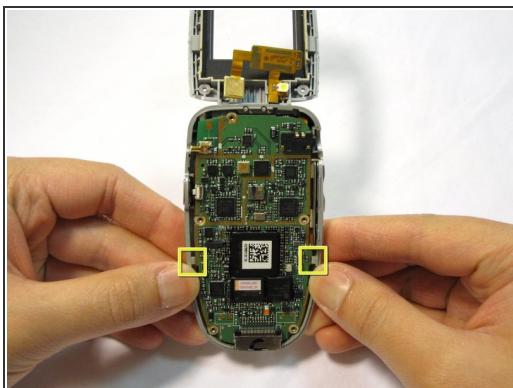


## Step 7



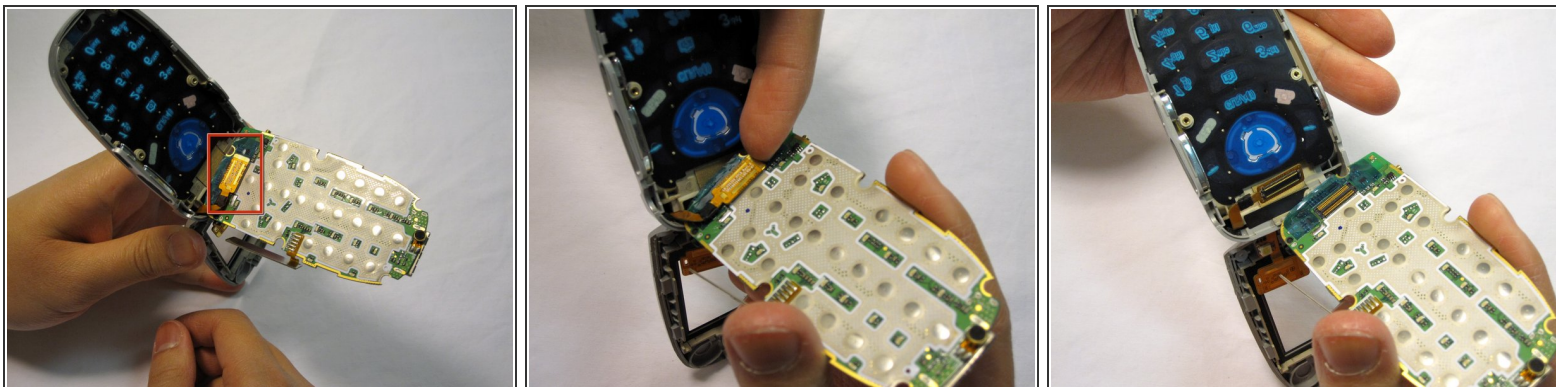
- Check to see that your device looks like the attached photo.

## Step 8 — main board



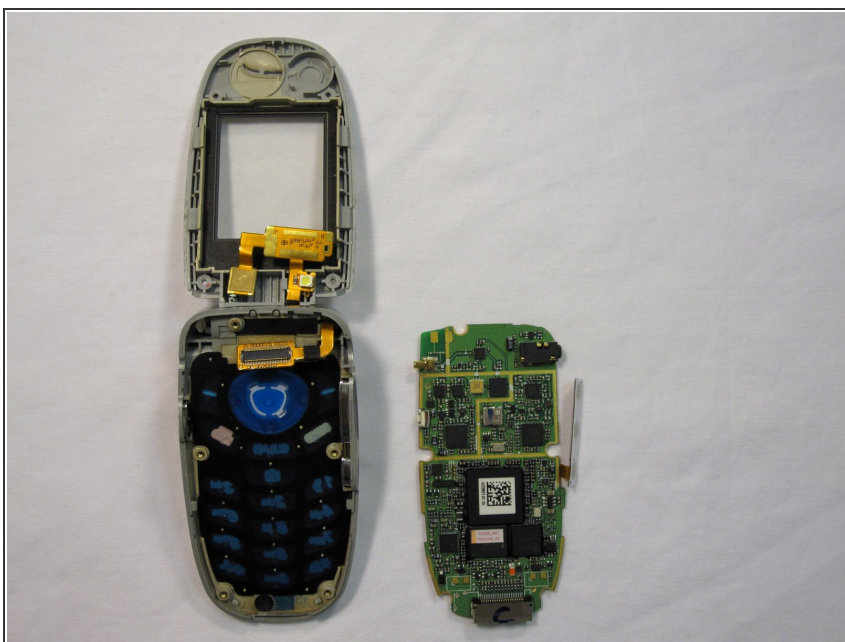
- Locate the tabs that hold the logic board in place.
- Pull the outer frame of the phone outwards to release the board from the tabs.

## Step 9



- Locate the copper connection (orange-colored) on the back of the board.
- Pry the connector free from the board with your fingernail.

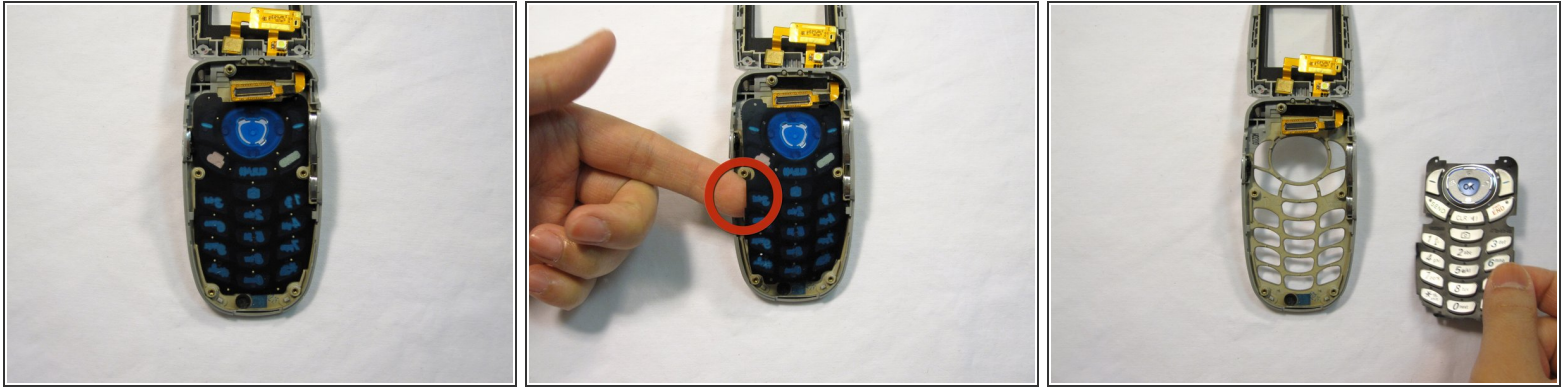
## Step 10



- Check to see that your device looks like the image shown.
- ⓘ Note: The image is shown with the LCD screen removed. This is not necessary for logic board removal.



## Step 11 — Keypad



- Use your finger to lift up the keypad.

## Step 12



- Check to see that your device looks like the image shown.

⚠ Do not let the buttons fall out of the side casing of the phone!

ⓘ Note: The image is shown with the LCD screen removed. This is not necessary for keypad repair.

To reassemble your device, follow these instructions in reverse order.